

**NORTH BEACH WATER DISTRICT
PACIFIC COUNTY, WASHINGTON**

RESOLUTION NO. 03-2014

**A RESOLUTION OF THE BOARD OF COMMISSIONERS OF
NORTH BEACH WATER DISTRICT, PACIFIC COUNTY,
WASHINGTON, ACCEPTING CHANGE ORDER NUMBER ONE
FROM BIG RIVER EXCAVATING, INC. TO DWSRF
PROJECT DM12-952-121 CONTRACT**

WHEREAS, North Beach Water District awarded a construction contract to Big River Excavating, Inc for the DWSRF DM12-952-121 Water Main Project on November 18, 2013; and

WHEREAS, Big River Excavating, Inc. contracted to perform the work specified in the DWSRF DM12-952-121 Water Main Project on December 14, 2013; and

WHEREAS, North Beach Water District provided Big River Excavating plans and specifications for additional work, which is attached hereto and incorporated herein as "Exhibit A", related to the DWSRF DM12-952-121 Water Main Project on January 15, 2014 requesting a cost estimate for that work, and

WHEREAS, Big River Excavating, Inc provided a reasonable and equitable cost estimate (Change Order No. 1) for the additional work requested by the District, now, therefore,

BE IT RESOLVED by the Board of Commissioners of North Beach Water District, Pacific County, to accept Big River Excavating, Inc Change Order No 1 which is attached hereto and incorporated herein as "Exhibit B", and

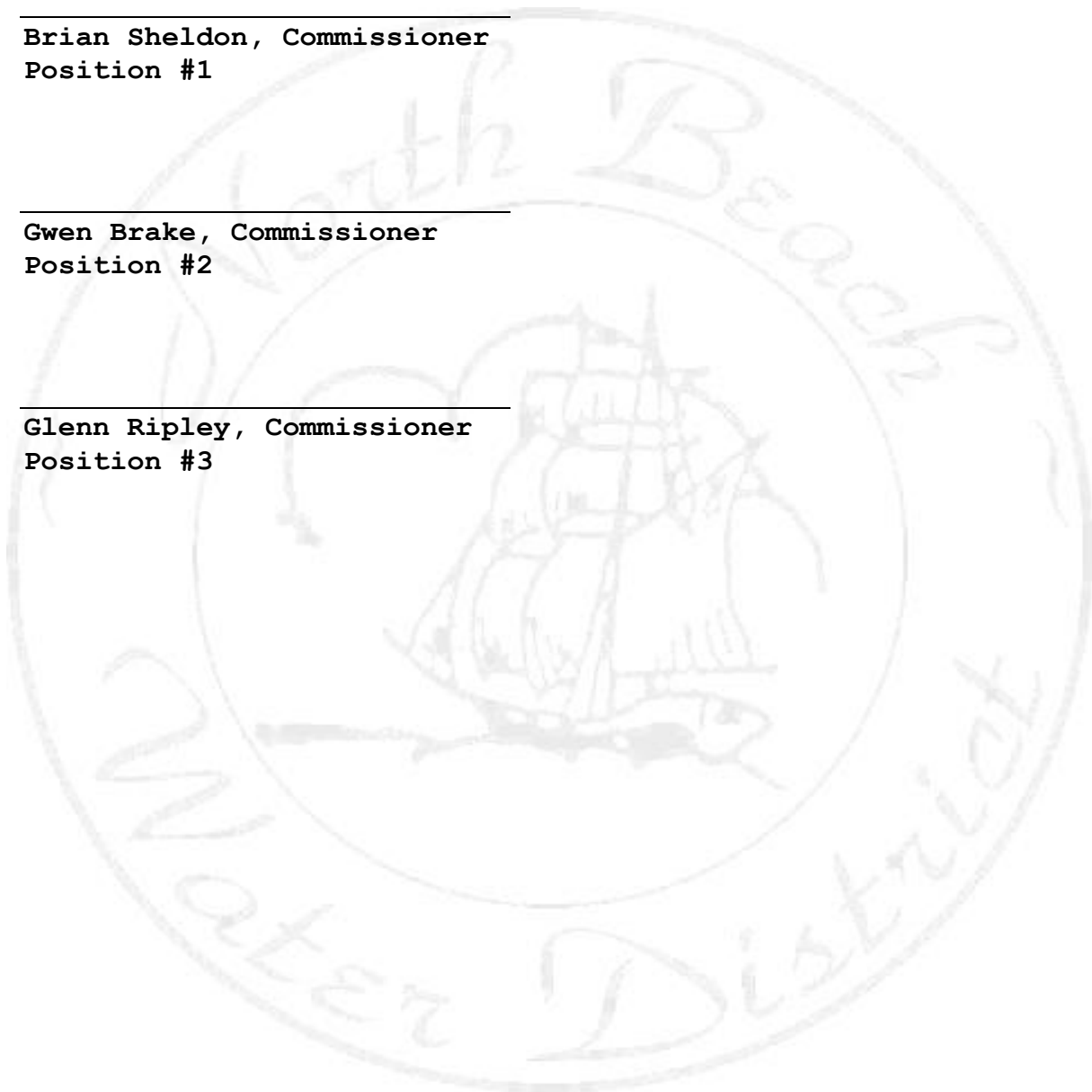
BE IT FURTHER RESOLVED by the Board of Commissioners of North Beach Water District, Pacific County, to authorize its general manager to execute Big River Excavating, Inc Change Order No. 1 without delay and cause the work to be completed.

ADOPTED by the Board of Commissioners on North Beach Water District, Pacific County, Washington at its regular meeting held on the 21th day of January, 2014.

Brian Sheldon, Commissioner
Position #1

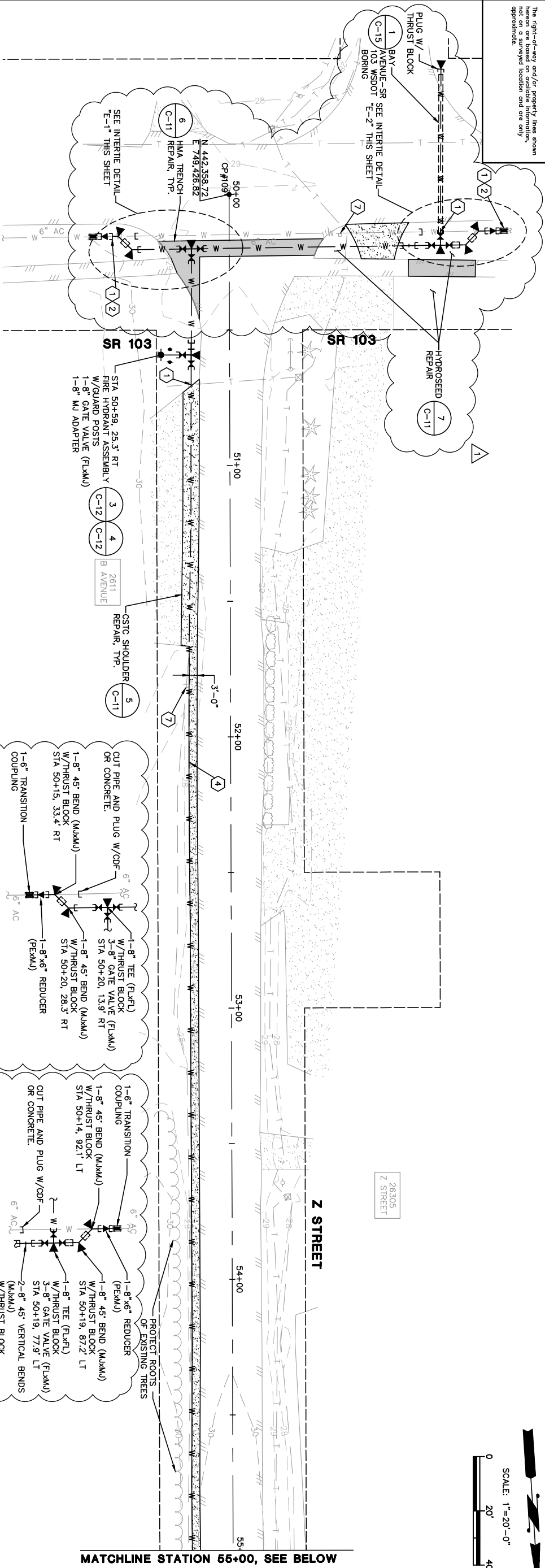
Gwen Brake, Commissioner
Position #2

Glenn Ripley, Commissioner
Position #3



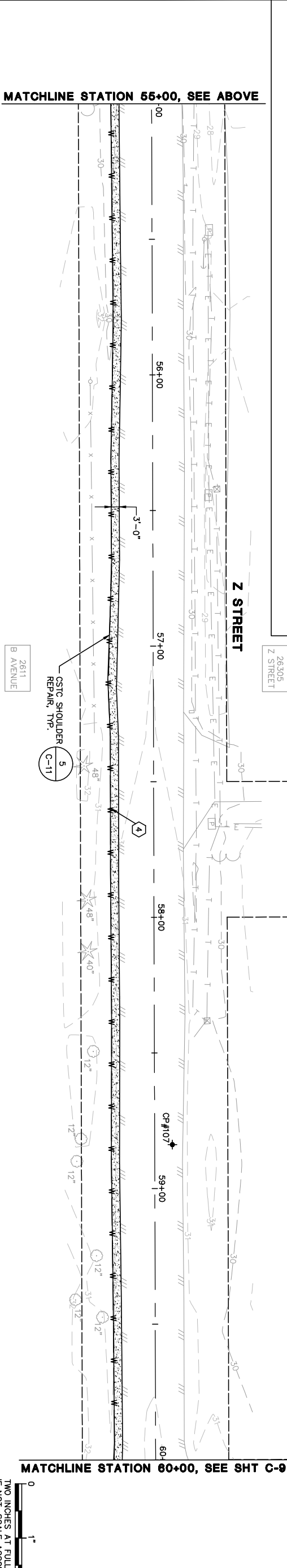
RIGHT-OF-WAY DISCLAIMER

The right-of-way and/or property lines shown herein are based on available information, not on a surveyed location and are only approximate.



NOTES:

- 1 UTILITY CROSSING OR CONNECTION: CONTRACTOR SHALL POTHOLE AND FIELD VERIFY LOCATION/ ALIGNMENT/ ELEVATION/ SIZE/ MATERIAL OF EXISTING UTILITY PRIOR TO CONSTRUCTION.
- 2 CONTRACTOR SHALL NOT MAKE CONNECTION TO EXISTING SYSTEM UNTIL RESOURCES FOR BACTERIOLOGICAL AND CHEMICAL ANALYSIS HAVE BEEN OBTAINED. CONTRACTOR SHALL PROVIDE TEMPORARY BLOW OFF FITTINGS AND BLOCKING AS NECESSARY TO TEST AND DISINFECT WATER MAIN.
- 3 INSTALL 6-INCH WATER MAIN.
- 4 INSTALL 8-INCH WATER MAIN.
- 5 INSTALL 12-INCH WATER MAIN.
- 6 PROJECT EXISTING WATER MAIN DURING CONSTRUCTION. ABANDON IN PLACE ONCE NEW WATER MAIN IS IN SERVICE.
- 7 REMOVE AND REINSTALL SIGN/MALIBOX AS REQUIRED TO CONSTRUCT WATER MAIN IMPROVEMENTS. FURNISH AND INSTALL NEW POST AND CONCRETE ANCHOR.
- 8 CONTRACTOR SHALL COORDINATE WITH UTILITY COMPANY TO HOLD POLE DURING WATER MAIN INSTALLATION.
- 9 THE CONTRACTOR SHALL CLOSE EXISTING VALVE ONCE THE EXISTING WATER MAIN IS ABANDONED. THE EXISTING VALVE BOX SHALL THEN BE REMOVED, WASTHAULED AND BACKFILL WITH GDF.
- 10 INSTALL NEW WATER SERVICE. WATER SERVICE LOCATIONS ARE APPROXIMATE. SEE DETAIL 5 SHEET C-12.
- 11 REMOVE EXISTING BLOW-OFF ASSEMBLY AND SALVAGE TO NBWD. PLUG WITH GDF OR CONCRETE.
- 12 PROJECT EXISTING TREES AND SHRUBS DURING CONSTRUCTION.



MATCHLINE STATION 55+00, SEE ABOVE

MATCHLINE STATION 60+00, SEE SHT C-9



SHEET: **C-8R**
OF: **15**
JOB NO.: 13223.00
DWG: PLANS

NORTH BEACH WATER DISTRICT
PACIFIC COUNTY WASHINGTON
WATER MAIN PROJECT
SCHEDULE C
Z STREET WATER MAIN PLANS
STA 50+00 TO 60+00



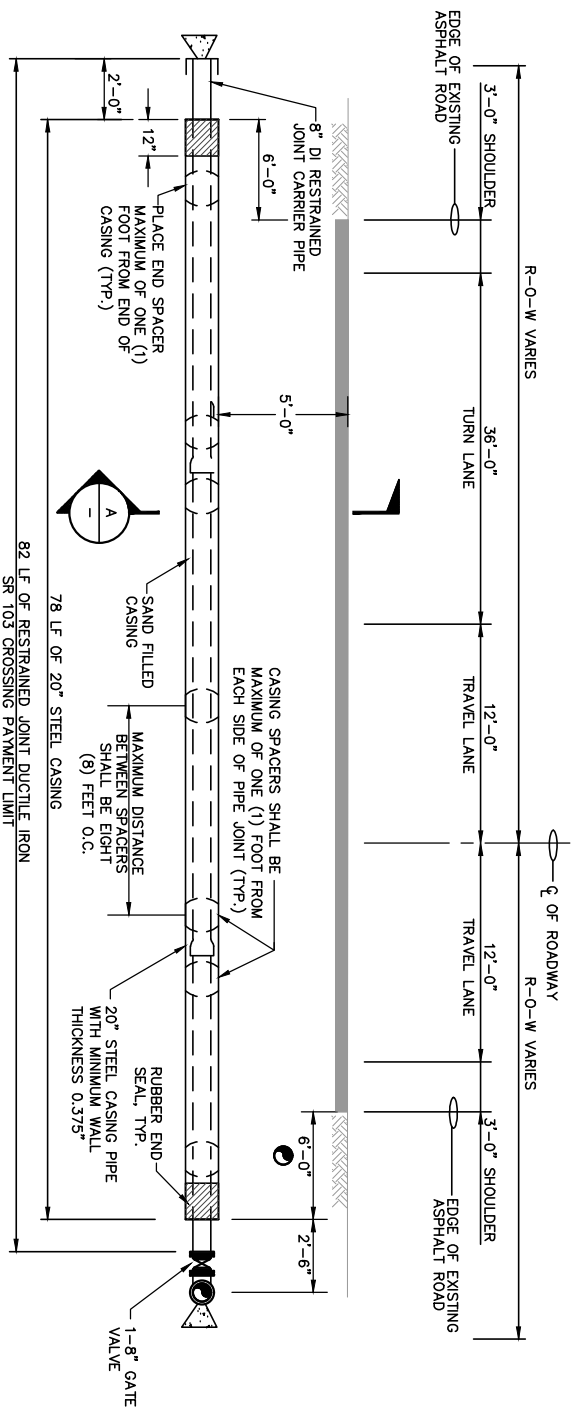
SCALE: 1"=20'-0"

SCALE: 1"=20'-0"
0 20' 40'

CHANGE ORDER PROPOSAL	1/14	MBJ	DATE: JAN 2014
No.	REVISION	DATE	APPD

SCALE: 1"=20'-0"
DRAWN: EWH
CHECKED: AKK
APPROVED: MBJ

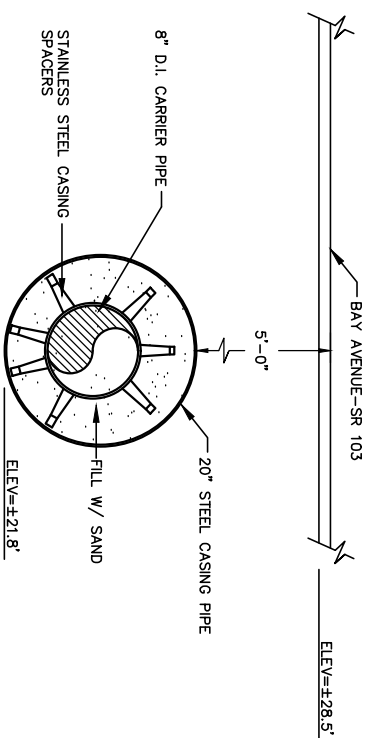
Gray & Osborne, Inc.
CONSULTING ENGINEERS
2102 CARRIAGE DRIVE SW, BLDG. I
OLYMPIA, WASHINGTON 98502 • (360) 292-7481



BAY AVENUE-SR 103
WSDOT BORING
 NOT TO SCALE



- NOTES:
1. CASING SPACERS SHALL BE STANDARD TYPE.
 2. MINIMUM RUNNER WIDTH SHALL BE 2 INCHES.
 3. RUNNER HEIGHT SHALL BE SIZED TO PROVIDE:
 - A. MINIMUM 0.75" BETWEEN CARRIER PIPE BELL & CASING PIPE WALL AT ALL TIMES.
 - B. MINIMUM 1" CLEARANCE BETWEEN RUNNERS AND TOP OF CASING WALL TO PREVENT JAMMING DURING INSTALLATION.
 4. THE CASING PIPE SHALL BE COATED WITH BLACK BITUMINOUS COATING.



SECTION
 NOT TO SCALE



NORTH BEACH WATER DISTRICT
 PACIFIC COUNTY WASHINGTON
WATER MAIN PROJECT
 BORING DETAILS



DATE:	JAN 2014
SCALE:	NOTED
DRAWN:	EWB
CHECKED:	AKK
APPROVED:	MBJ

No.	REVISION	DATE	APPD
1	CHANGE ORDER PROPOSAL	1/14	MBJ

SHEET: **C-15R**
 OF: **15**
 JOB NO.: 13223.00
 DWG: DETAILS R