

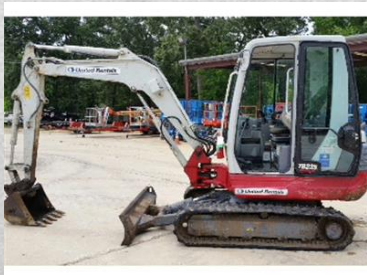
# Quality used Equipment for sale

## 2011 TAKEUCHI TB235C

<b>Description:</b>	MINI EXCAVATOR 7400-9199#
<b>Meter:</b>	3,288
<b>Serial #:</b>	123501612
<b>Equipment #:</b>	1199498
<b>Price:</b>	\$24,805 (USD)

United Rentals (Store C08)  
6331 LIBERTY ROAD  
HOUSTON, TX 77026-4331  
Mon-Fri: 7:00AM-5:00PM Sat: CLOSED Sun: CLOSED

**Sales Contact:**  
GREGORY CHAPMAN  
(713) 674-4040  
gchapman@ur.com



May 19, 2016

Page 1 of 2

UnitedRentals.com  
800.UR.RENTS

2011 TAKEUCHI TB235C  
PRICE: \$24,805 (USD)  
HOUSTON, TX (713) 674-4040



May 19, 2016

Page 2 of 2

UnitedRentals.com  
800.UR.RENTS

# United Guard™

## SAFEGUARD YOUR USED EQUIPMENT WITH PROTECTION YOU CAN TRUST

With United Guard, you'll benefit from reduced downtime, higher resale value, and fewer service interruptions.

### With United Guard You'll Receive:

- Free equipment inspections
- Warranted repairs on listed components
- No co-pays on any covered repairs
- Service at any of our more than 880 locations in North America

For program details contact your local branch or call 800.UR.RENTS.

### UNITED GUARD ELIGIBILITY REQUIREMENTS

- Equipment must have a sale price of at least \$2,500 and must be less than 9 years old at the time of sale
- Equipment must be geographically located within the United Rentals range of service
- United Guard is only for the benefit of the original purchaser and is not transferable
- Entities that intend to sell or rent the equipment purchased are not eligible for United Guard
- United Guard must be purchased within 72 hours of equipment purchase
- United Rentals, Inc. (and its subsidiaries) makes no warranties to those defined as consumers in the Magnuson-Moss Warranty-Federal Trade Commission Improvement Act
- Powered licensed vehicles and trailers are not eligible



UnitedRentals.com  
800.UR.RENTS

# Parts Table

Not every component is covered by this agreement. Coverage and exclusions are detailed below.

## UNITED GUARD COVERAGE INCLUDES

### ENGINE:

Engine Block  
Cylinder Liners  
Piston  
Piston Rings  
Piston Pins  
Cylinder Heads  
Head Gasket  
Crankshaft  
Main Bearings  
Con Rods  
Con Rod Bearings  
Balance Assemblies  
Camshaft  
Push Rods  
Tappets  
Valves  
Springs  
Guides  
Timing Gears  
Lubrication Pump  
Drive Components  
Casting Assembly  
Thrust Bearings  
Internal Oil Seals  
External Oil Seals (internal failure)  
Bushes  
External Pump Drive Gear

### TRANSMISSION/TRANSAXLE:

Charging Pumps  
Gear Train  
Shafts  
Thrust Washers  
Bushes  
Needle Roller Bearings  
Bearings  
Gears  
Internal Seals  
Input and Output Seals (internal failure)  
Clutch Packs  
Couplings  
Oil Lubrication Pumps  
Main Control Valves  
Relief Valves  
Torque Converter  
Gearshift Controller  
Electronic Control (black-box)  
Transmission Casing  
PTO Drives

### DRIVE LINES:

Main Shafts  
Sliding Points  
Flange/Yoke end of Drive Lines  
Pivot Shaft  
Pivot Shaft Support Bearings

### DRIVE AXLES/FINAL DRIVES:

Bearings  
Shafts  
Thrust Washers  
Seals  
Input Seals (internal failure)  
Tension Springs  
Bull Gears  
Pinions

Ring Gears  
Crown Wheels  
Internal Differential Gears and Locks  
Axle Case  
Differential Case  
Yokes  
Wheel Hubs

### ELECTRICAL:

Batteries  
Wiring  
Motors  
Solenoids  
Solenoid Valves  
Electric Instrument Panel  
Switches  
Relays  
Sender Units  
Hour Meters  
Gauges  
Sensors  
Black-box  
Microprocessor/ECU/ECM  
Starter Motor  
Alternator  
Regulators  
Controllers  
Generators  
Coils

### COOLING SYSTEM:

Hoses  
Fan Belts  
Blowers  
Fans  
Fan Belt Tensioners  
Water Pump  
Internal Bearings and Seals  
Fan Thermostat  
Thermostat  
Oil Coolers  
Radiators  
Cab Heating Assembly  
Intercoolers  
Aftercoolers  
Heat Exchangers  
Air Conditioners

### FUEL SYSTEMS:

Injectors  
Fuel Injection Pump  
Fuel Lift Pump  
Engine Priming Pump  
Fuel Tanks  
Carburetors  
Propane regulators  
Hoses and Fittings

### HYDRAULICS:

Hoses  
"O"-rings  
External Seals  
Exposed Pipes  
Rubber Mountings  
Hydraulic Tank Breathers  
Hydraulic/Hydrostatic Motors  
Hydraulic/Hydrostatic Pumps

Hydraulic Control Valves  
Relief Valves  
Accumulators  
Shuttle Valve  
Hydraulic Tank and Mounting  
Hydraulic Cylinders (rams)  
Electro/Hydraulic Valves  
Check Valves

### MAIN FRAME/CHASSIS:

Chassis  
Mainframe  
Track Frames  
Equalizer Bars/Pivot  
Cylinder Mountings  
Pins  
Bearings  
Bushes  
Seals  
Trunion, Trunion Housing and Trunion Brackets  
Axle Mountings  
Steering Cylinder Mountings  
Axle Trunion  
Mast  
Mast Rollers  
Carriage  
Carriage Rollers  
Boom  
Tele-boom  
Boom Mountings  
Boom Cylinder Mountings  
Stabilizer

### CASTINGS AND CASINGS, UNDERCARRIAGE, IDLERS, TRACK ADJUSTERS, RUNNING GEAR:

Bearings  
Shaft  
Thrust Washers  
Seals  
Input Seals (internal failure)  
Front Idlers  
Idler Shafts  
Track Adjuster Assembly  
Tension Springs  
Bull Gears  
Pinions  
Crown Wheels  
Yokes  
Steering and Brake Controls  
Final Drive Shaft  
Sprockets/Segments (for breakage where applicable)

### OTHER COMPONENTS:

Compressor Air End Components  
Generator/Welder Electrical End Components  
Water Pump – Pump End Components  
ROPS & FOPS Structures

### EXCLUSIONS:

The following wear items/parts are excluded:  
Air Filter  
Oil Filter  
Fuses  
Tires and Tubes  
Cosmetic Items  
Non-functional Parts