

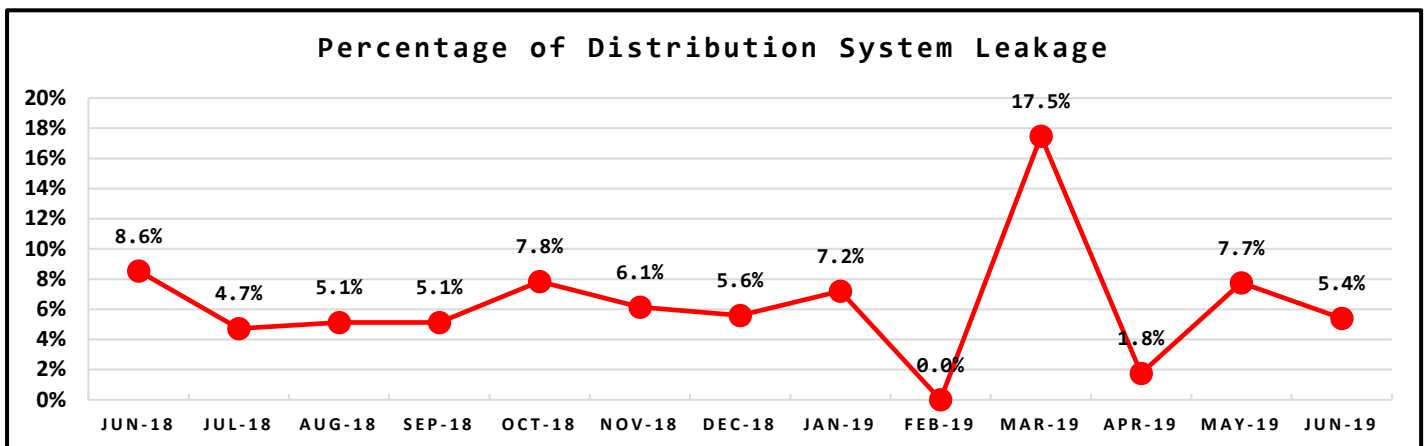
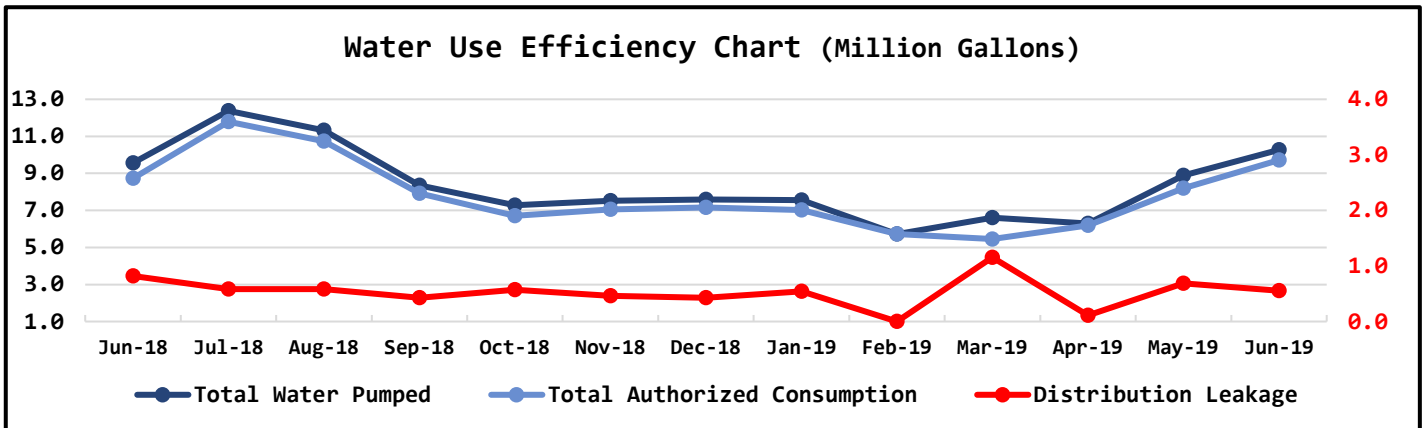
NORTH BEACH WATER DISTRICT

GENERAL MANAGERS REPORT

FOR
July-2019

Metering Period		Water Production		
May 1, 2019	to	June 1, 2019	NWF Master Meter	7.7421 mg
			SWF Master Meter	2.5345 mg
			Total Water Pumped	10.2766 mg

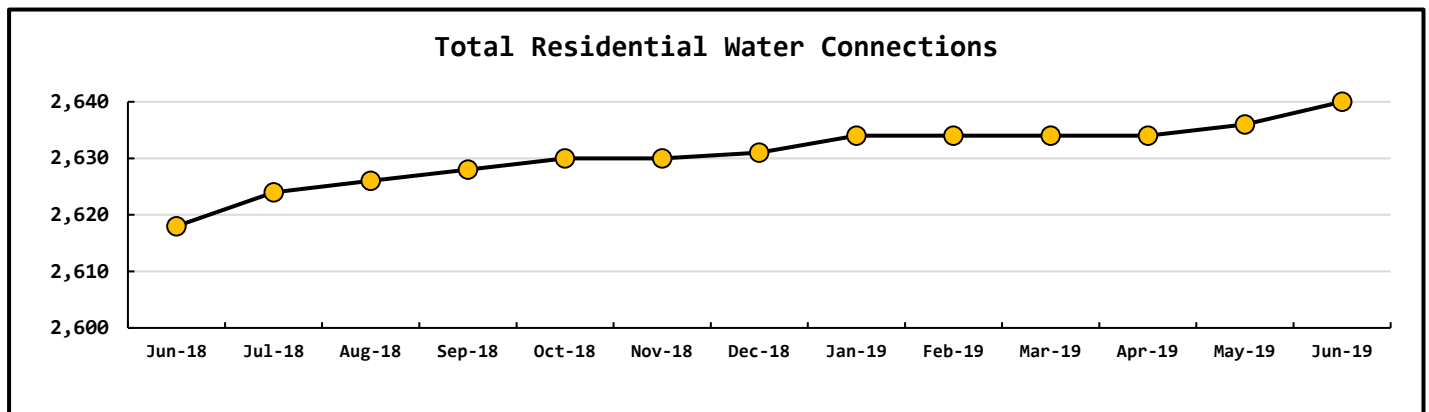
Metering Period		Water Consumption		
May 1, 2019	to	June 1, 2019	Total Water Sold	8.0988 mg
			NWF Backwash	0.1428 mg
			SWF Backwash	0.4549 mg
			Distribution Flushing	1.0250 mg
			Total Authorized Consumption	9.7215 mg
			Distribution Leakage	0.5551 mg
			Percent of DSL	5.4% %

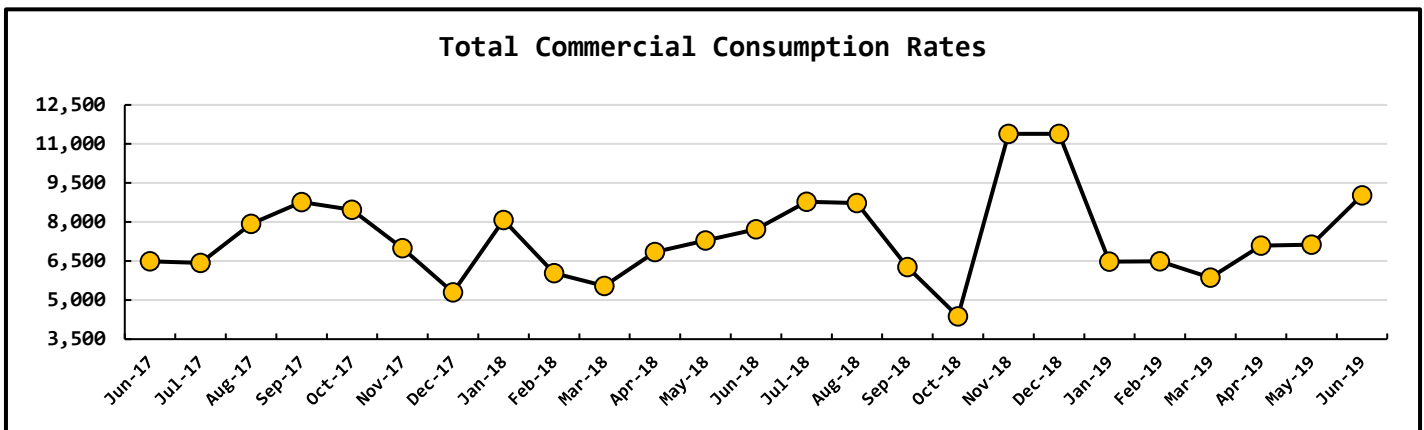
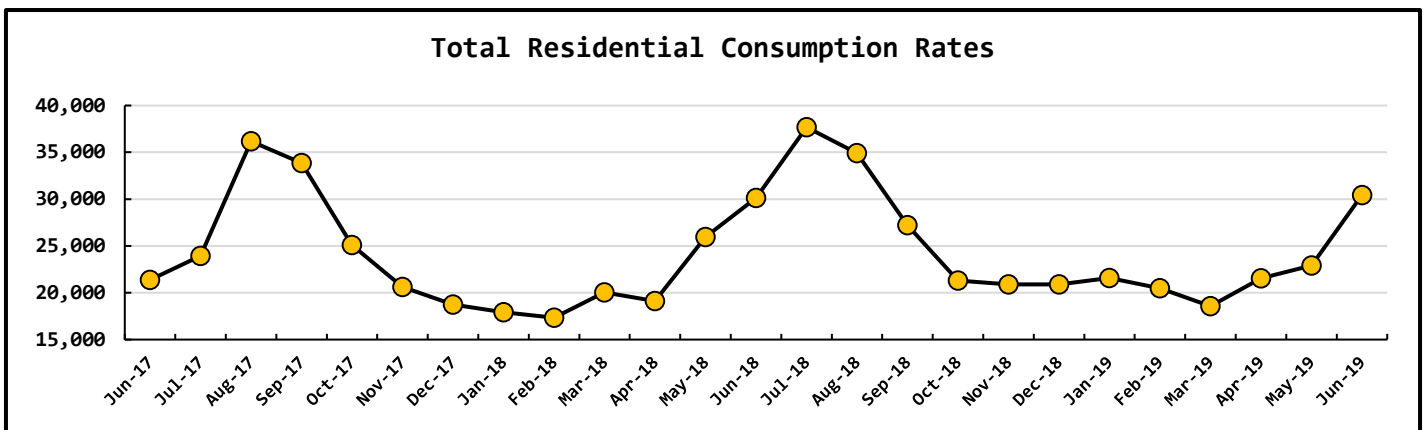
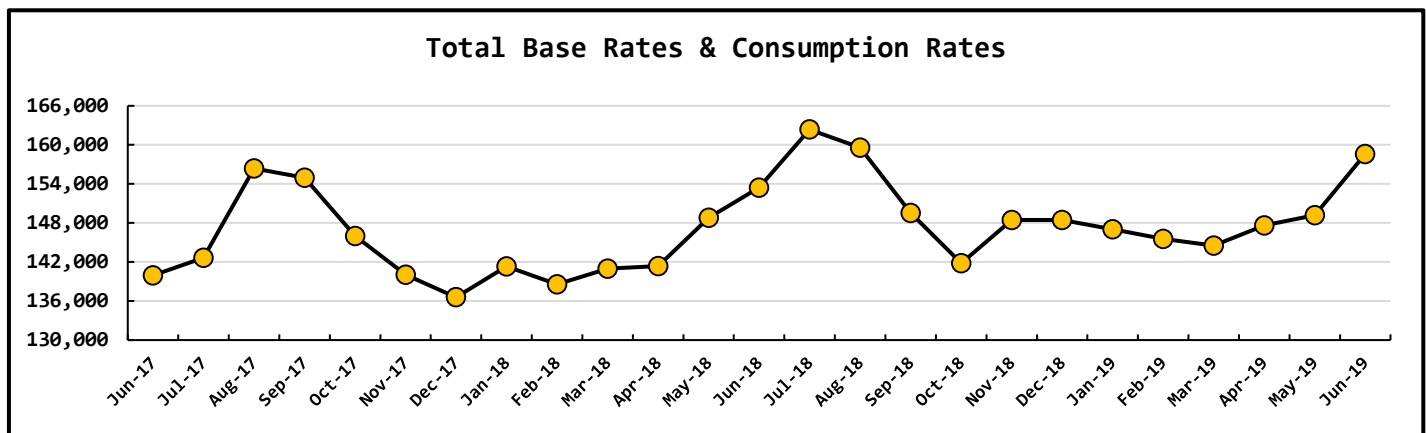


Data Period		Booster System Data		
June, 2019		North Wellfield Booster High	660	gpm
		North Wellfield Booster Low	0	gpm
		North Wellfield Booster Average	171	gpm
		South Wellfield Booster High	1246	gpm
		South Wellfield Booster Low	0	gpm
		South Wellfield Booster Average	60	gpm
		North Wellfield Booster High	86	psi
		North Wellfield Booster Low	43	psi
		North Wellfield Booster Average	62	psi
		South Wellfield Booster High	72	psi
		South Wellfield Booster Low	44	psi
		South Wellfield Booster Average	63	psi

Data Period		Well Field Data		
June, 2019		North Wellfield Total	7.7454	mg
		South Wellfield Total	2.5345	mg

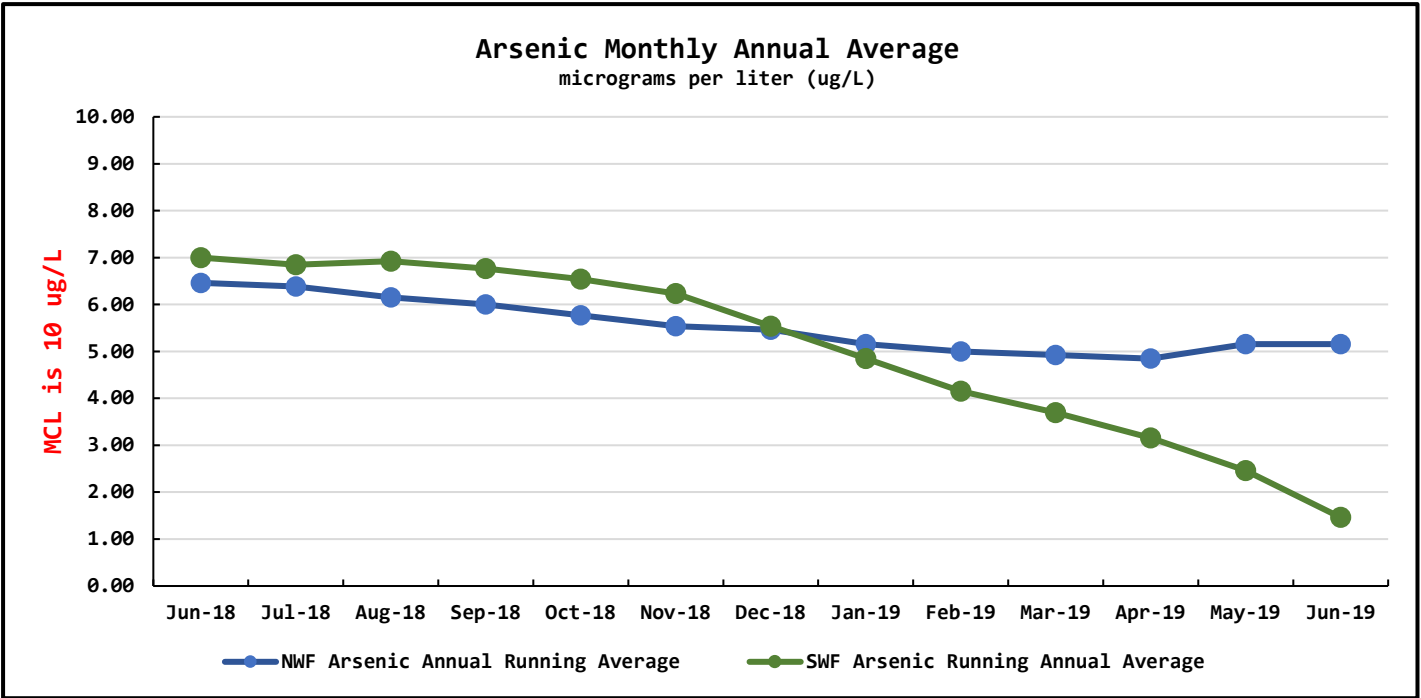
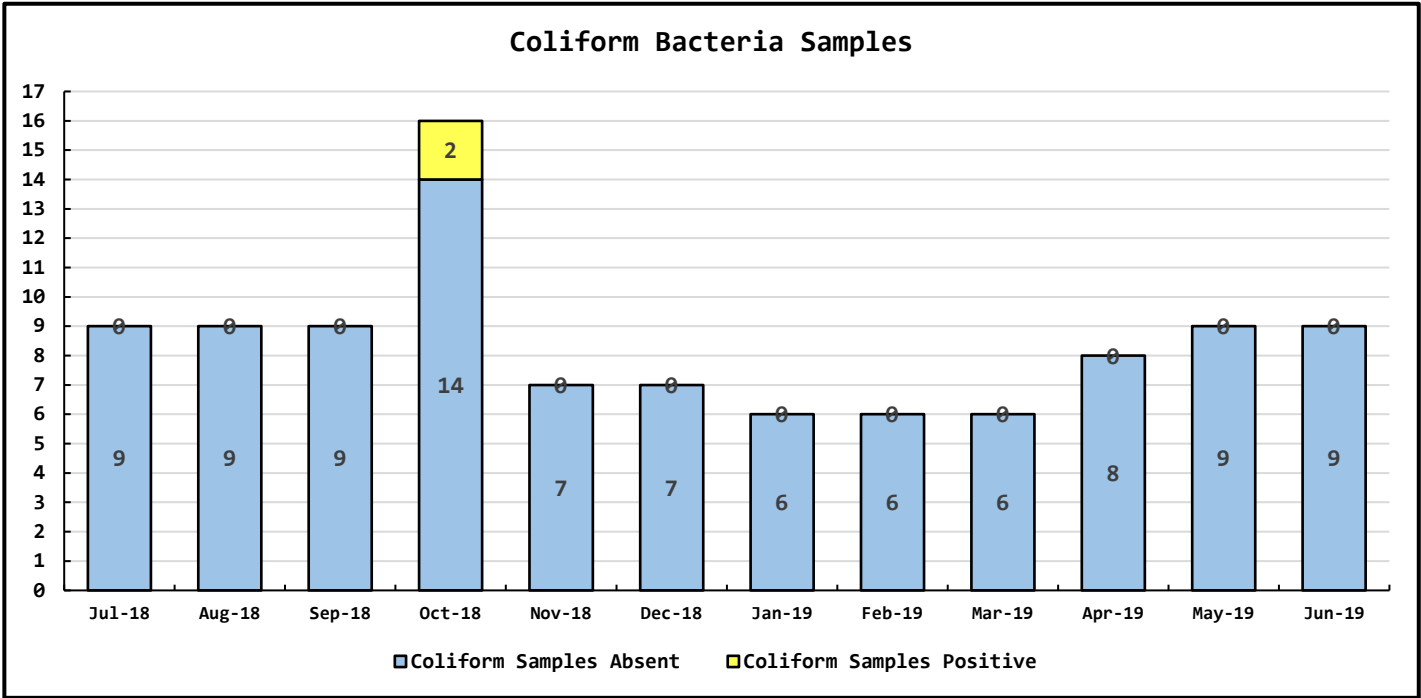
Data Period			Accounts Data		
June, 2019			Residential Base Rate	111,029	\$
			Residential Consumption	30,420	\$
			Commercial Base Rate	8,134	\$
Residential Accounts	2,640	ea	Commercial Consumption	9,028	\$
Commercial Accounts	102	ea	Fire Flow Rate	1,024	\$
Fire Flow Accounts	4	ea	Backflow Assembly Rates	177	\$
Backflow Accounts	29	ea	Surfside Contract	5,454	\$
			Surfside Reimbursement	186	\$
			Other Fees & Charges	3,740	\$
			Total	169,191	\$





Data Period	Operations Data		
June, 2019	Past Due Accounts	244	ea
	Properties with Liens	32	ea
	Accounts Locked Off	6	ea
	Water Main Locates	29	ea
	Water Quality Complaints	0	ea
	Customer Service Calls	61	ea
	Customer Valves Installed	1	ea
	New Services Installed	1	ea

Data Period	Water Quality Data		
June, 2019	Coliform Samples Collected	9	ea
	Coliform Samples Absent	9	ea
	Coliform Samples Positive	0	ea
	Coliform Sample Positive E. coli	0	ea
	NWF Arsenic Annual Running Average	5.15	ug/L
	SWF Arsenic Running Annual Average	1.46	ug/L



General Manager's Report - August 2019

Bay Avenue Water Main Replacement Project

The project is complete. The Board will consider a Resolution approving a Change Order to the Contract at the August Regular Meeting. A Resolution to accept the project should be ready for the Boards consideration at the September Regular Meeting.

Emond Easement Water Main Improvements

The crew is finishing the project this month.

North Wellfield Treatment Plant

The NWF treatment plant is removing all contaminants to below the maximum contaminant levels (MCL).

South Wellfield Treatment Plant

The SWF treatment plant is removing all contaminants to below the maximum contaminant levels (MCL)

Continuous Chlorination

There is nothing new to report on this issue.

Accredited Drinking Water Bacteria Laboratory

There was no progress on this project in July.

General Manager's Report - August 2019

Supplemental

Mike Collins contacted me via email about an upcoming Department of Public Works project. They will be improving approximately 1,400 l.f. of 245th Lane starting at the intersection of 245th Lane and U Street and proceeding west to Ash Place. The District has an existing undersized water main along 245th Lane.

In 2013 Pacific County Public Works provided ditching and backfill work for the new water main on 245th Lane between U Place and HWY 103. Mike would like to know if we are interested in installing a new water main on 245th lane in conjunction with their improvements. In 3013 the cost of installing 1,400 l.f. of 8-inch water main and two fire hydrants was approximately \$55,000.00.

The county anticipates starting this project in October or early November. Groundwater is an issue in this area so the are in a hurry.

I will start getting estimates together as soon as mike provides a survey map of the street delineating the scope of the project.