

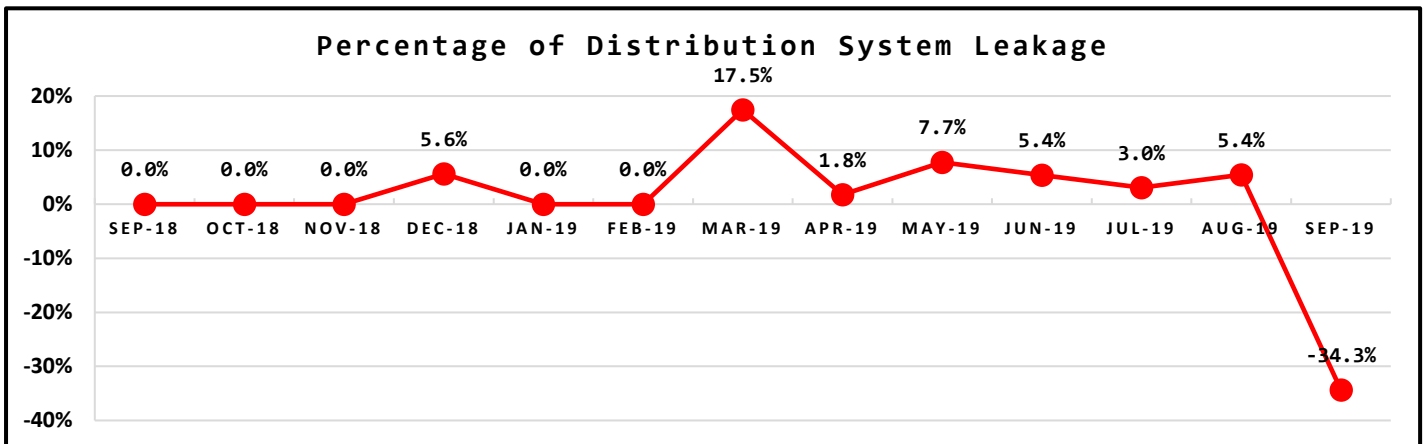
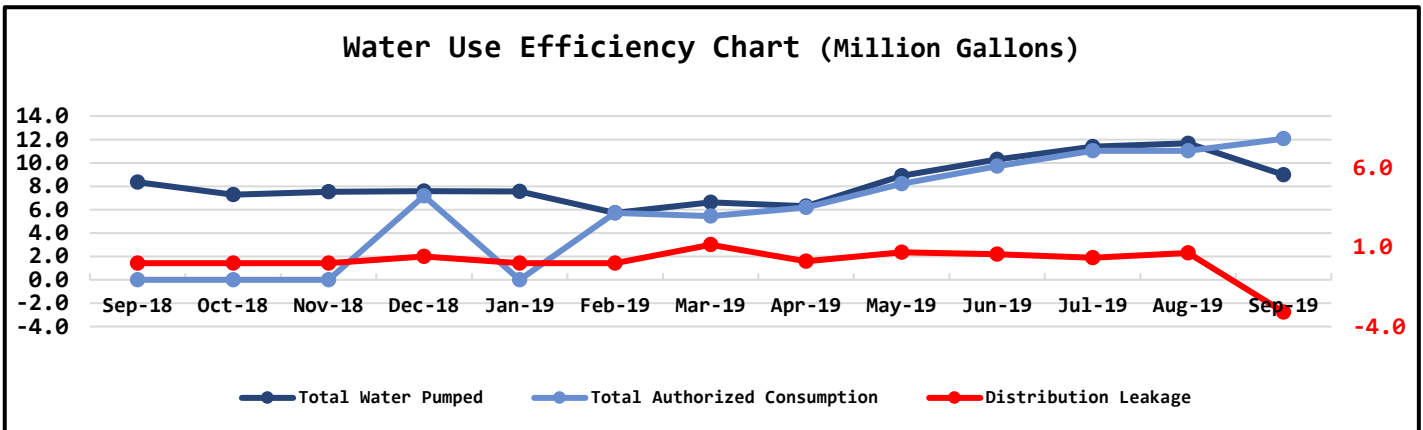
NORTH BEACH WATER DISTRICT

GENERAL MANAGERS REPORT

FOR
October-2019

Metering Period	Water Production
September 1, 2019 to September 30, 2019	NWF Master Meter 3.8623 mg
	SWF Master Meter 5.1150 mg
	Total Water Pumped 8.9773 mg

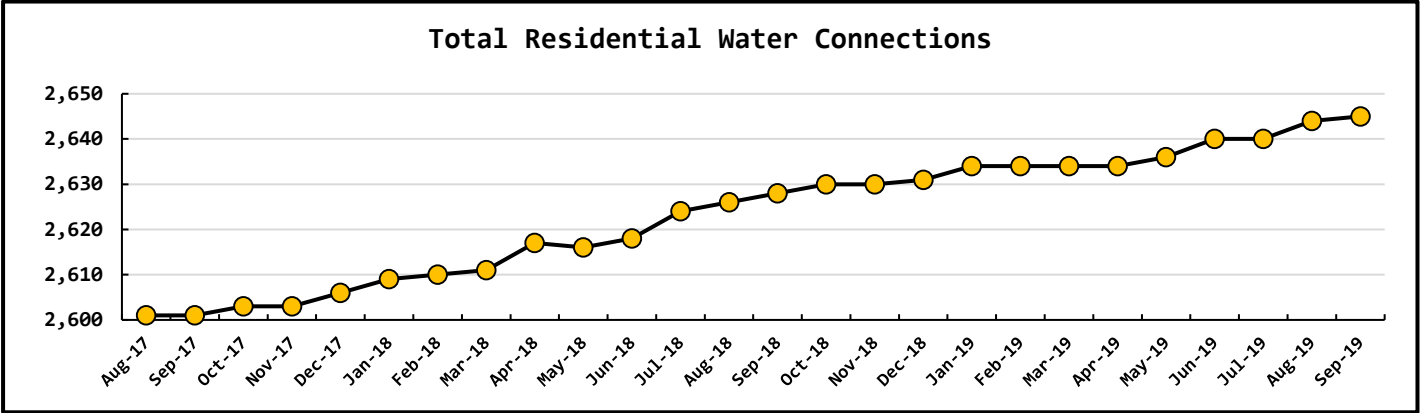
Metering Period	Water Consumption
September 1, 2019 to September 30, 2019	Total Water Sold 11.1160 mg
	NWF Backwash 0.1020 mg
	SWF Backwash 0.8424 mg
	Distribution Flushing 0.0000 mg
	Total Authorized Consumption 12.0604 mg
	Distribution Leakage -3.0831 mg
	Percent of DSL -34.3% %

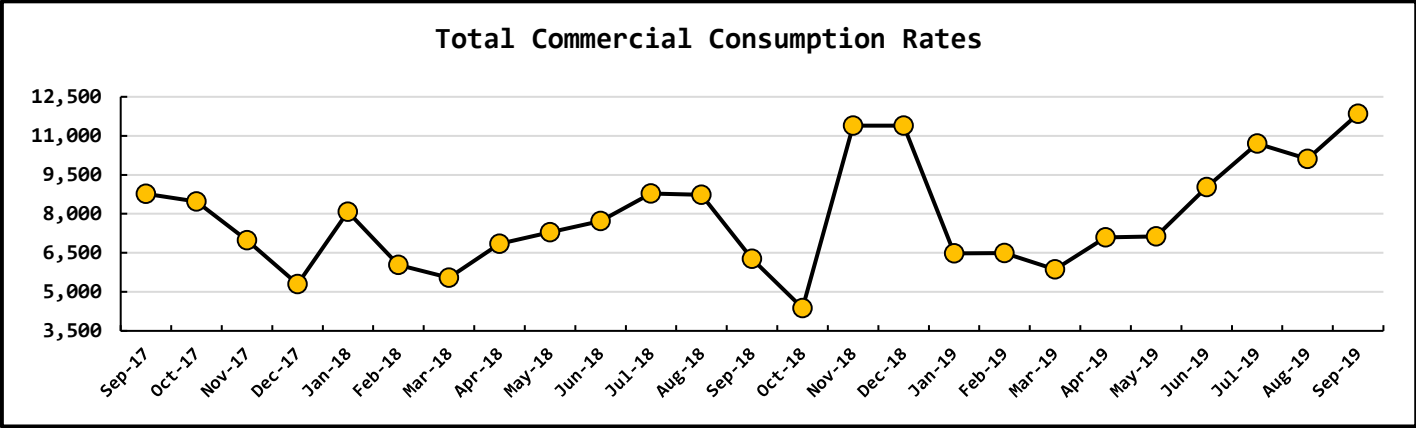
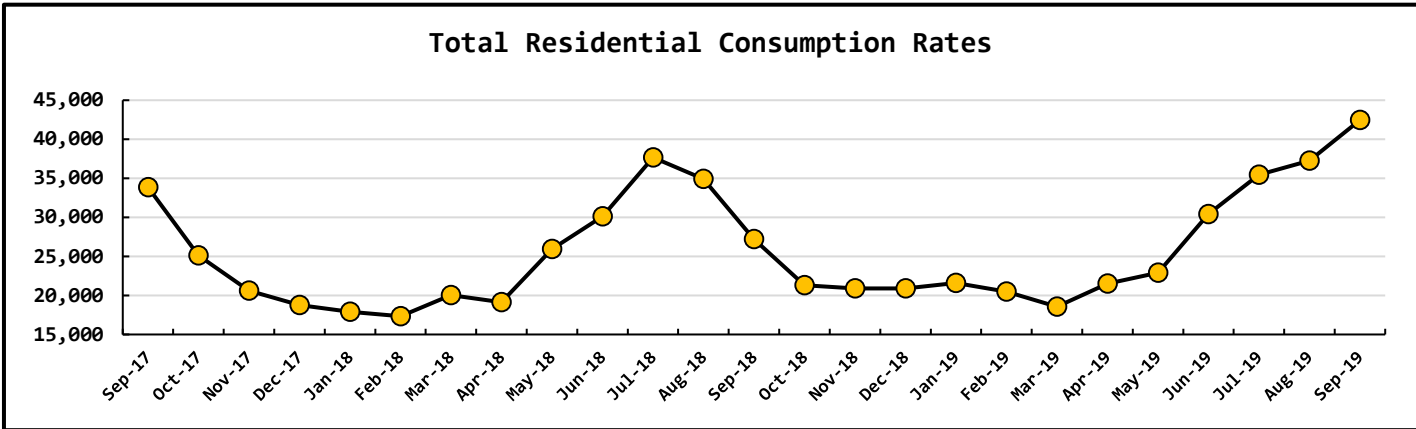
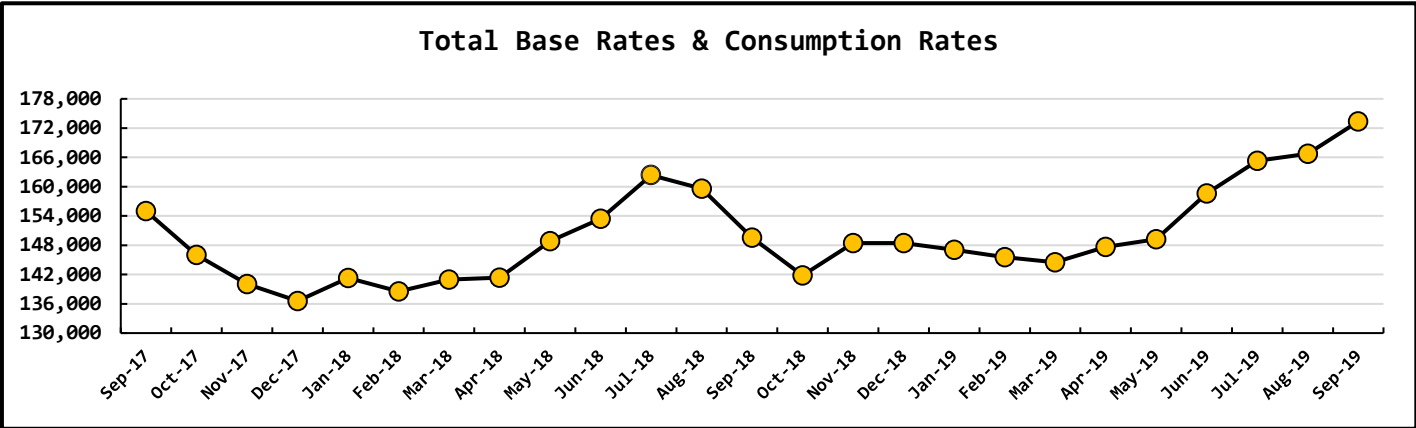


Data Period	Booster System Data		
September, 2019	North Wellfield Booster High	750	<i>gpm</i>
	North Wellfield Booster Low	0	<i>gpm</i>
	North Wellfield Booster Average	89	<i>gpm</i>
	South Wellfield Booster High	1293	<i>gpm</i>
	South Wellfield Booster Low	0	<i>gpm</i>
	South Wellfield Booster Average	115	<i>gpm</i>
	North Wellfield Booster High	75	<i>psi</i>
	North Wellfield Booster Low	0	<i>psi</i>
	North Wellfield Booster Average	61	<i>psi</i>
	South Wellfield Booster High	72	<i>psi</i>
	South Wellfield Booster Low	35	<i>psi</i>
	South Wellfield Booster Average	62	<i>psi</i>

Data Period	Well Field Data		
September, 2019	North Wellfield Total	4.2053	<i>mg</i>
	South Wellfield Total	5.1145	<i>mg</i>

Data Period	Accounts Data		
September, 2019	Residential Base Rate	110,920	\$
	Residential Consumption	42,458	\$
	Commercial Base Rate	8,134	\$
	Commercial Consumption	11,844	\$
	Fire Flow Rate	1,024	\$
	Backflow Assembly Rates	184	\$
	Surfside Contract	5,454	\$
	Surfside Reimbursement	354	\$
	Other Fees & Charges	315	\$
	Total	180,687	\$
	Residential Accounts	2,645	<i>ea</i>
	Commercial Accounts	102	<i>ea</i>
Fire Flow Accounts	4	<i>ea</i>	
Backflow Accounts	27	<i>ea</i>	





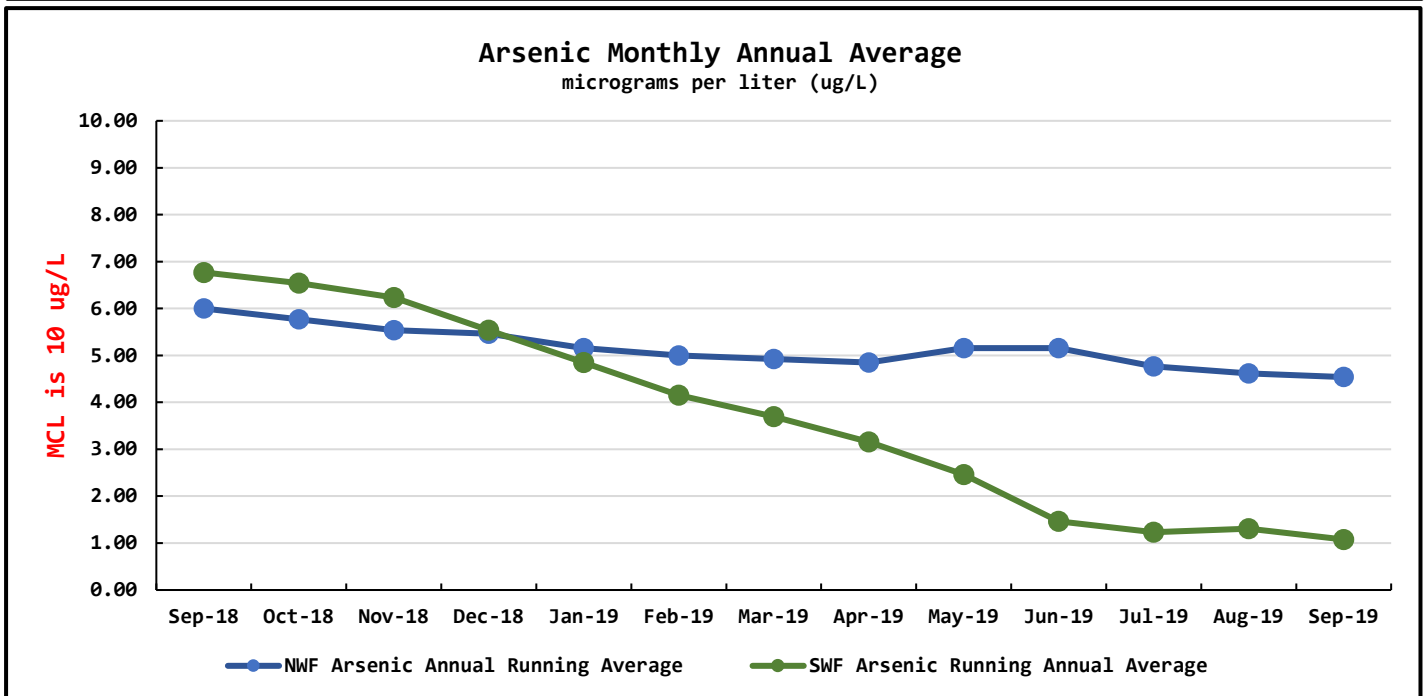
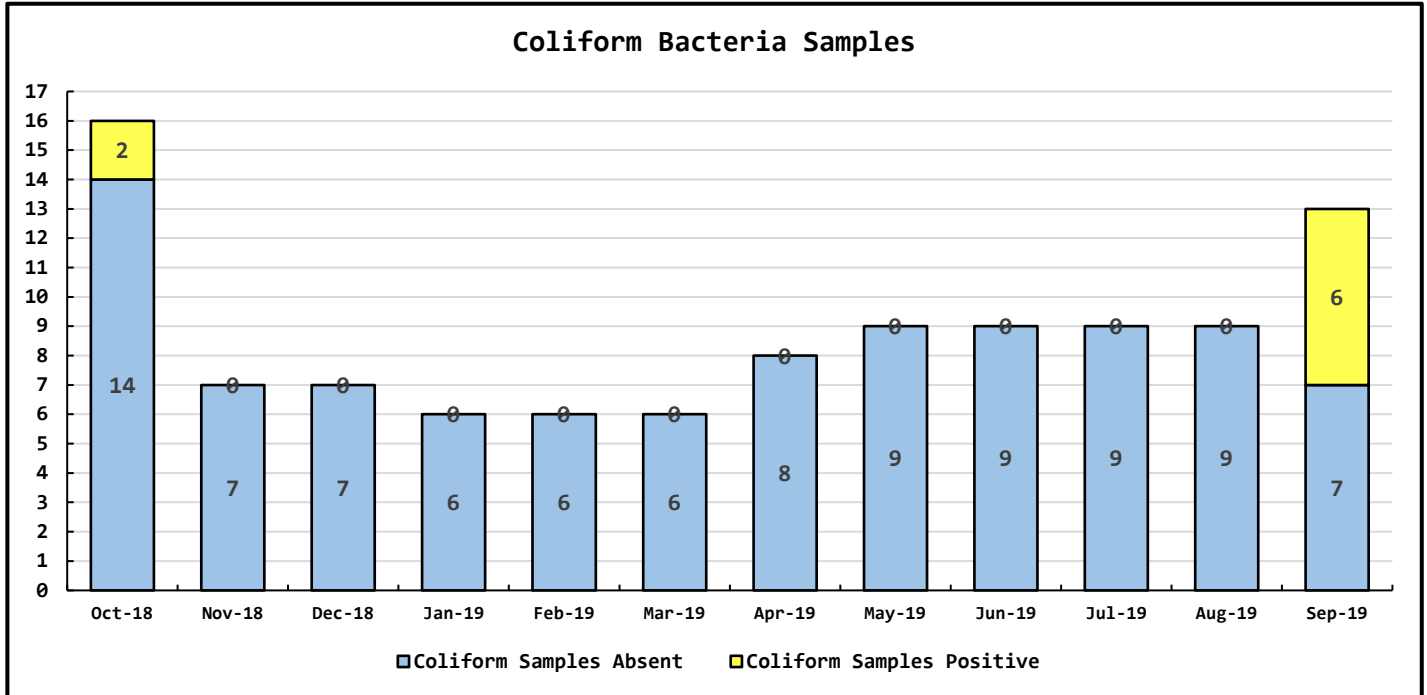
Data Period	Operations Data		
September, 2019	Past Due Accounts	279	<i>ea</i>
	Properties with Liens	27	<i>ea</i>
	Accounts Locked Off	6	<i>ea</i>
	Water Main Locates	32	<i>ea</i>
	Water Quality Complaints	0	<i>ea</i>
	Customer Service Calls	65	<i>ea</i>
	Customer Valves Installed	1	<i>ea</i>
	New Services Installed	2	<i>ea</i>

Data Period

Water Quality Data

September, 2019

Coliform Samples Collected	9	ea
Coliform Samples Absent	7	ea
Coliform Samples Positive	6	ea
Coliform Sample Positive E. coli	0	ea
NWF Arsenic Annual Running Average	4.54	ug/L
SWF Arsenic Running Annual Average	1.08	ug/L



General Manager's Report - September 2019

Emond Easement Water Main Improvements

The crew finished the project in early October. We are waiting for coliform bacteria samples to confirm the pipe is disinfected before final flush and commissioning the new loop.

North Wellfield Treatment Plant

The NWF treatment plant is treating all contaminants to below the maximum contaminant levels (MCL).

South Wellfield Treatment Plant

The SWF treatment plant is treating all contaminants to below the maximum contaminant levels (MCL)

Water Main Breaks

No main breaks in September.

Meter Reading Software

We experienced a software malfunction reading the meters for September's usage. We were only able to read about 1,800 meters on the read day. Two days later we were able to get about 400 more. Three days after that we got the rest (551) of the meters. The software we are using to read and recorded metered water use is no longer supported by the vender (Neptune Meters). The malfunction caused our water efficiency report to be skewed. I recommend we purchase the new software right away. The new software will have some significant new features. The new software including three year subscription and training will be about \$16,500.00.