

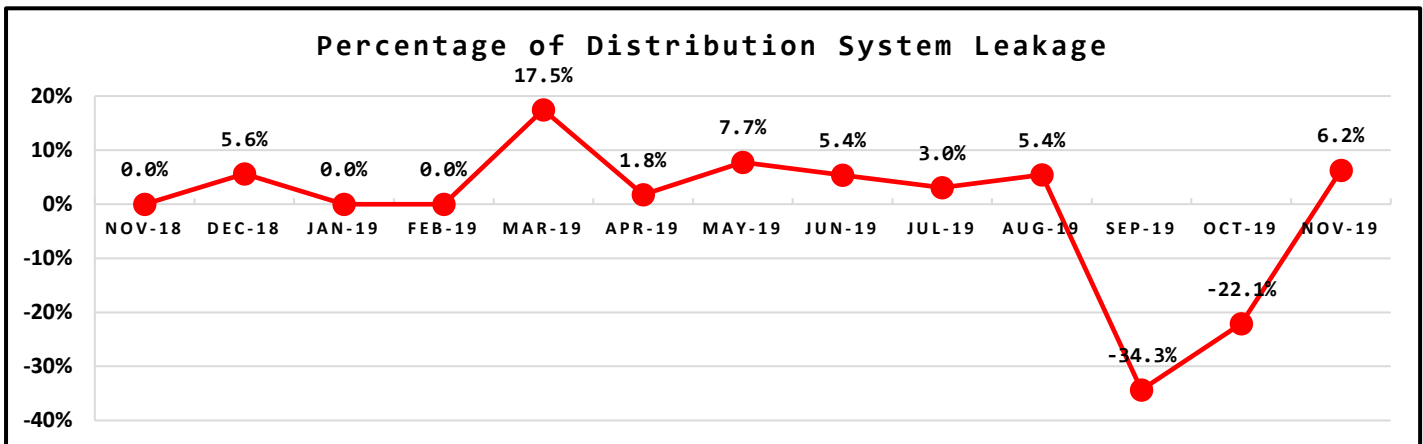
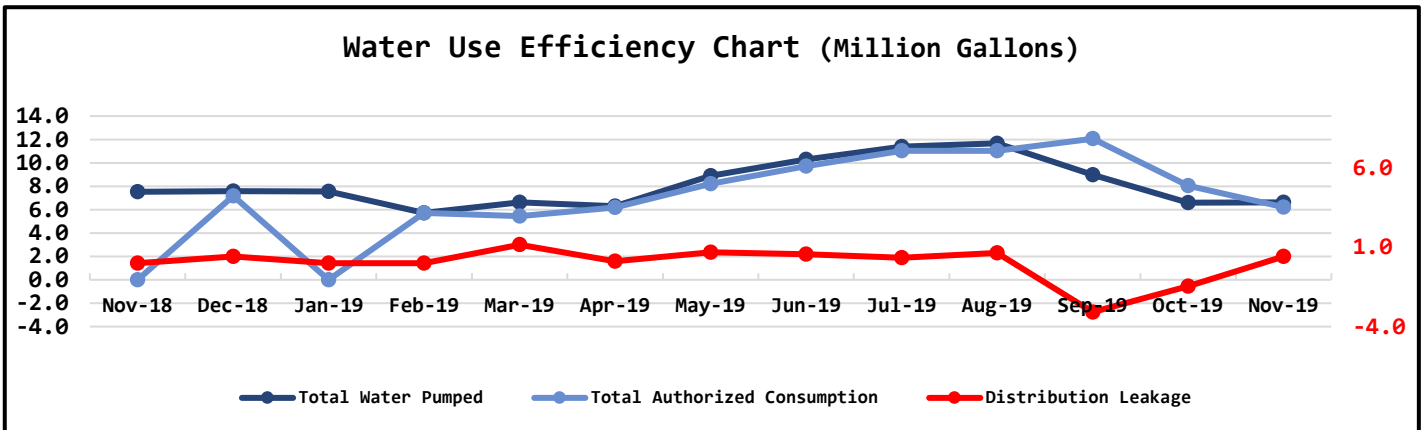
NORTH BEACH WATER DISTRICT

GENERAL MANAGERS REPORT

FOR
December-2019

Metering Period		Water Production		
November 1, 2019	to	November 30, 2019	NWF Master Meter	4.3900 mg
			SWF Master Meter	2.2305 mg
			Total Water Pumped	6.6205 mg

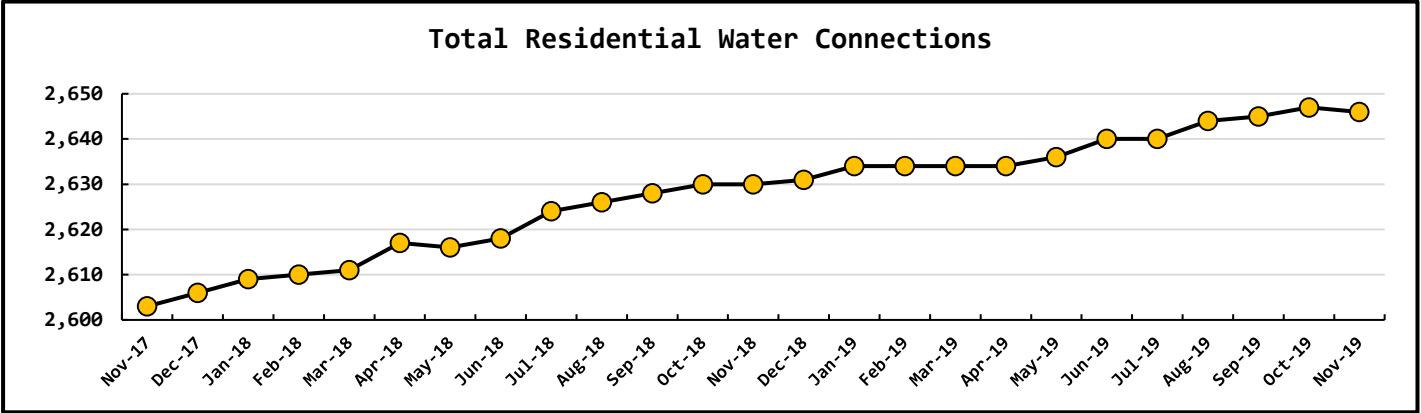
Metering Period		Water Consumption		
November 1, 2019	to	November 30, 2019	Total Water Sold	5.4199 mg
			NWF Backwash	0.1026 mg
			SWF Backwash	0.3980 mg
			Distribution Flushing	0.2863 mg
			Total Authorized Consumption	6.2068 mg
			Distribution Leakage	0.4137 mg
			Percent of DSL	6.2% %

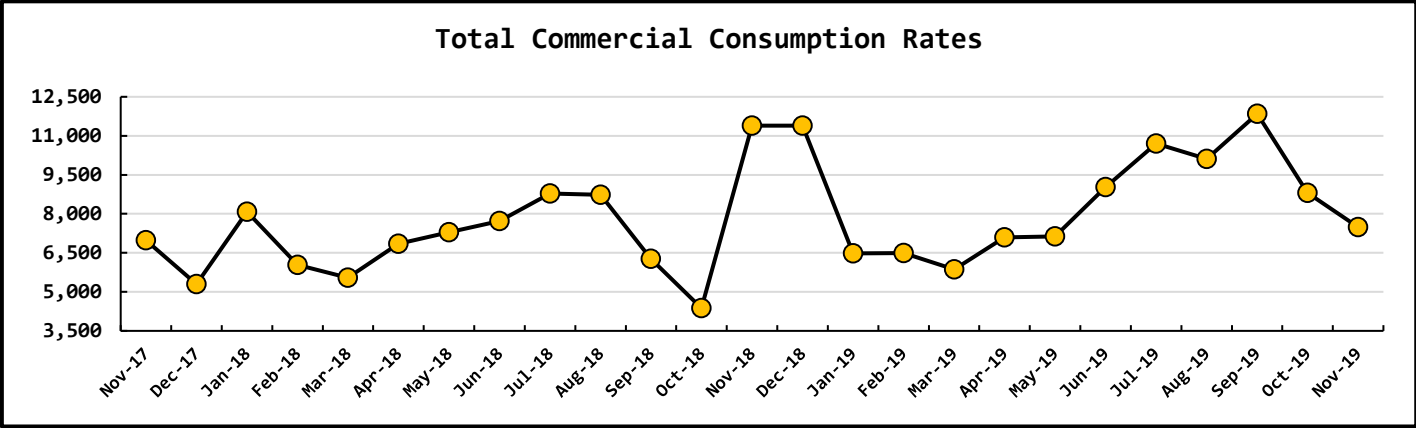
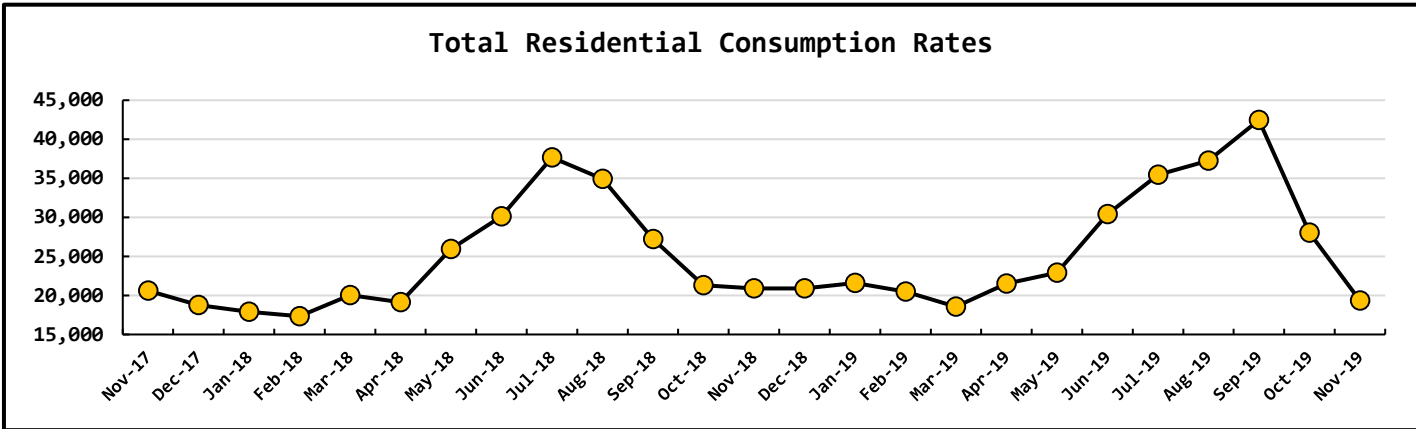
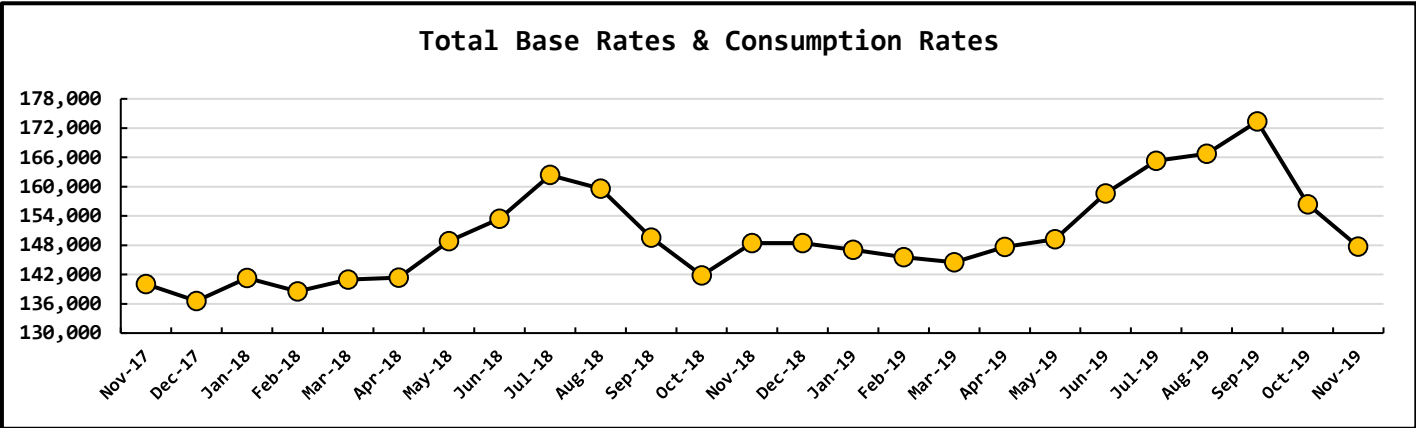


Data Period	Booster System Data		
November, 2019	North Wellfield Booster High	888	<i>gpm</i>
	North Wellfield Booster Low	0	<i>gpm</i>
	North Wellfield Booster Average	101	<i>gpm</i>
	South Wellfield Booster High	268	<i>gpm</i>
	South Wellfield Booster Low	0	<i>gpm</i>
	South Wellfield Booster Average	78	<i>gpm</i>
	North Wellfield Booster High	75	<i>psi</i>
	North Wellfield Booster Low	31	<i>psi</i>
	North Wellfield Booster Average	61	<i>psi</i>
	South Wellfield Booster High	75	<i>psi</i>
	South Wellfield Booster Low	35	<i>psi</i>
	South Wellfield Booster Average	60	<i>psi</i>

Data Period	Well Field Data		
November, 2019	North Wellfield Total	4.7138	<i>mg</i>
	South Wellfield Total	2.3859	<i>mg</i>

Data Period	Accounts Data		
November, 2019	Residential Base Rate	111,385	\$
	Residential Consumption	19,332	\$
	Commercial Base Rate	9,510	\$
	Commercial Consumption	7,491	\$
	Fire Flow Rate	1,024	\$
	Backflow Assembly Rates	177	\$
	Surfside Contract	5,454	\$
	Surfside Reimbursement	209	\$
	Other Fees & Charges	3,380	\$
	Total	157,960	\$
	Residential Accounts	2,646	<i>ea</i>
	Commercial Accounts	101	<i>ea</i>
Fire Flow Accounts	4	<i>ea</i>	
Backflow Accounts	26	<i>ea</i>	





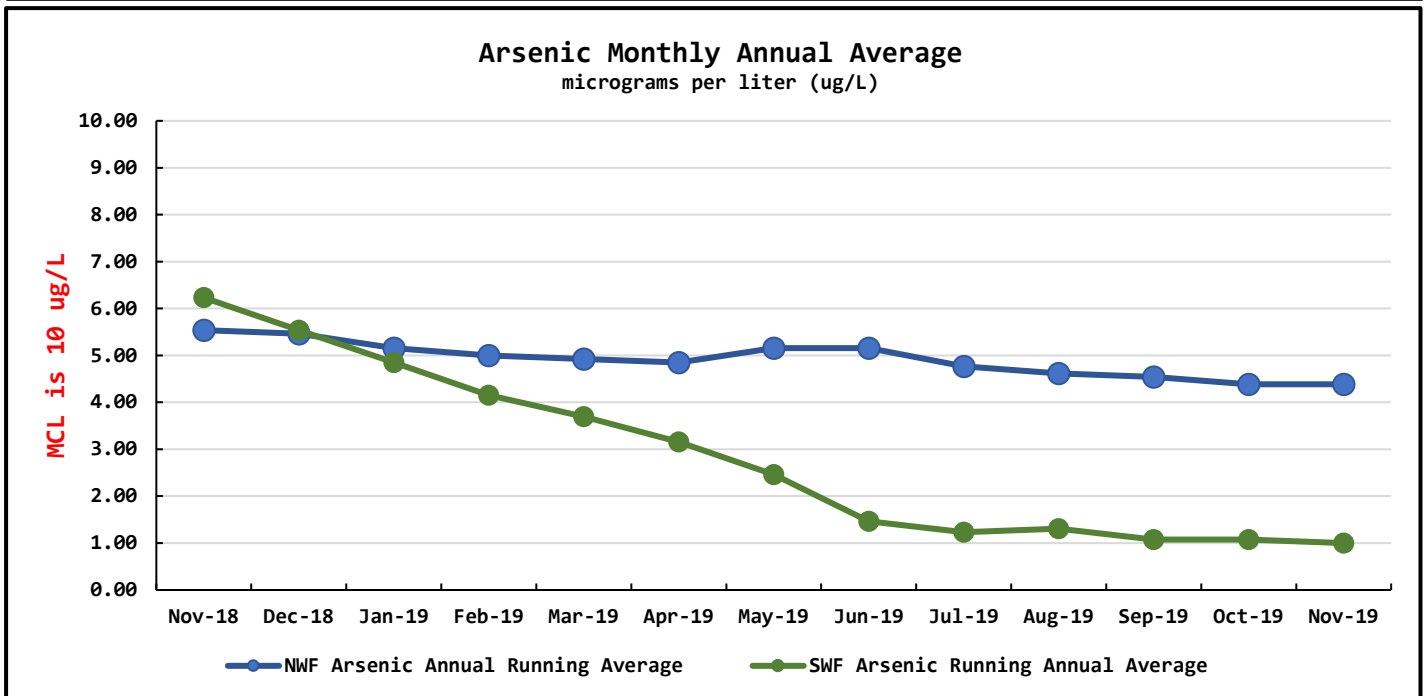
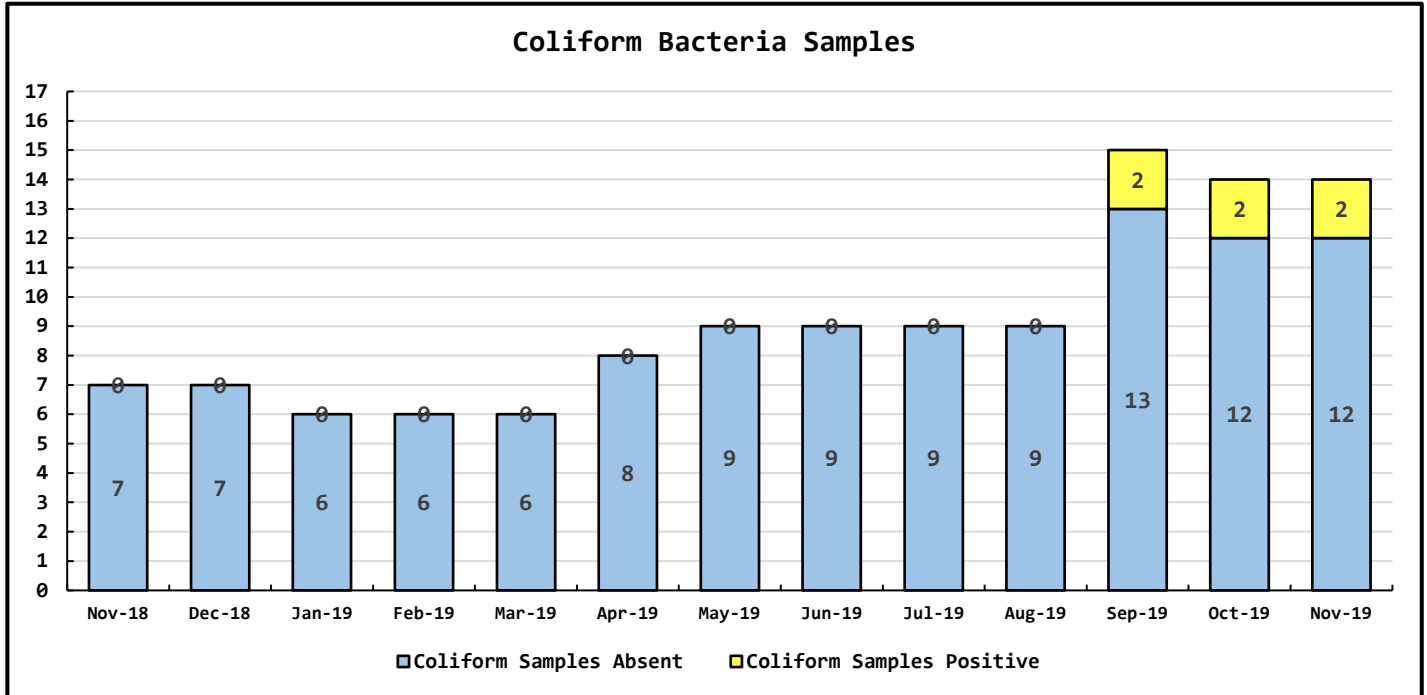
Data Period	Operations Data		
November, 2019	Past Due Accounts	272	<i>ea</i>
	Properties with Liens	33	<i>ea</i>
	Accounts Locked Off	6	<i>ea</i>
	Water Main Locates	20	<i>ea</i>
	Water Quality Complaints	0	<i>ea</i>
	Customer Service Calls	27	<i>ea</i>
	Customer Valves Installed	0	<i>ea</i>
	New Services Installed	0	<i>ea</i>

Data Period

Water Quality Data

November, 2019

Coliform Samples Collected	14	ea
Coliform Samples Absent	12	ea
Coliform Samples Positive	2	ea
Coliform Sample Positive E. coli	0	ea
NWF Arsenic Annual Running Average	4.38	ug/L
SWF Arsenic Running Annual Average	1.00	ug/L



General Manager's Report – November 2019

North Wellfield Treatment Plant

The NWF treatment plant is treating all contaminants to below the maximum contaminant levels (MCL).

South Wellfield Treatment Plant

The SWF treatment plant is treating all contaminants to below the maximum contaminant levels (MCL)

Water Main Breaks

No main breaks in November.

Meter Reading Software

The new meter reading software has been ordered. We are working with the software vender to schedule installation, implementation, and training.

245th Water Main Replacement Project

In September 2019 the Board approved an Interlocal Cooperation Agreement with Pacific County (Resolution 11-2019) and under that agreement, a project to replace water main on 245th Lane between U Street and Y Lane. Pacific County crews provided the labor, materials, and equipment to provide the trench and backfill for \$10,640 (estimated) and the District provided the labor, materials, and equipment to install the water main, valves, fittings, and fire hydrant for \$38,000 (estimated). The work is complete. The water main is installed, satisfactorily passed a pressure tested, and satisfactorily passed a coliform bacteria test. All of the water services have been connected to the new water main.

Coliform Bacteria Testing

Two of the eight routine coliform bacteria samples in November tested positive for coliform bacteria. All (6) repeat coliform bacteria water samples and both Ground Water Rule Source Samples have been analyzed by our laboratory (BSK Analytical Laboratories in Vancouver Washington). All samples were satisfactory.

The next step for the District is to conduct a level 2 assessment. We will complete the level 2 assessment in house. I intend to have Dennis Schweizer and Rick Gray complete the level 2 assessment together.

The level 2 assessment must be completed by December 26, 2019. If it is not possible to correct the sanitary defect(s) identified in the assessment by December 26, 2019, The District must

prepare a corrective action plan to correct the sanitary defect(s), including a time schedule for completion, to the Office of Drinking Water by November 25, 2019.

The District had unsatisfactory coliform bacteria samples in September, October, and in November. In response to those samples, I have instructed Dennis to start dosing the distribution system with chlorine. I also instructed him to expedite the installation of equipment in the South Wellfield booster station. The estimated cost is under \$5,000. This expense will reduce the estimated cost of the 2020 Capital Improvement Project "Pilot Test Distribution System Disinfection" by the same amount.

I instructed Dennis to collect an addition six investigative coliform bacteria samples in targeted areas of the distribution system. Those samples were collected and analyzed in the first week in December. All of those samples were satisfactory.

The chlorine in the distribution system will continue through the holidays.

The crew is currently conducting a unidirectional flush of the distribution system. We currently do this flush once a year. In the future, we will do this flush twice a year.