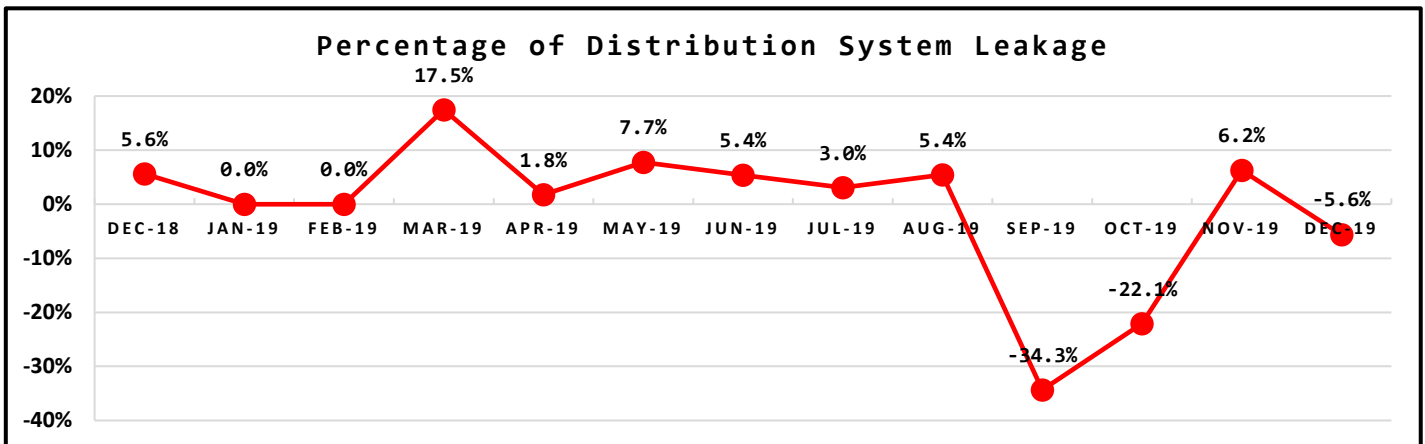
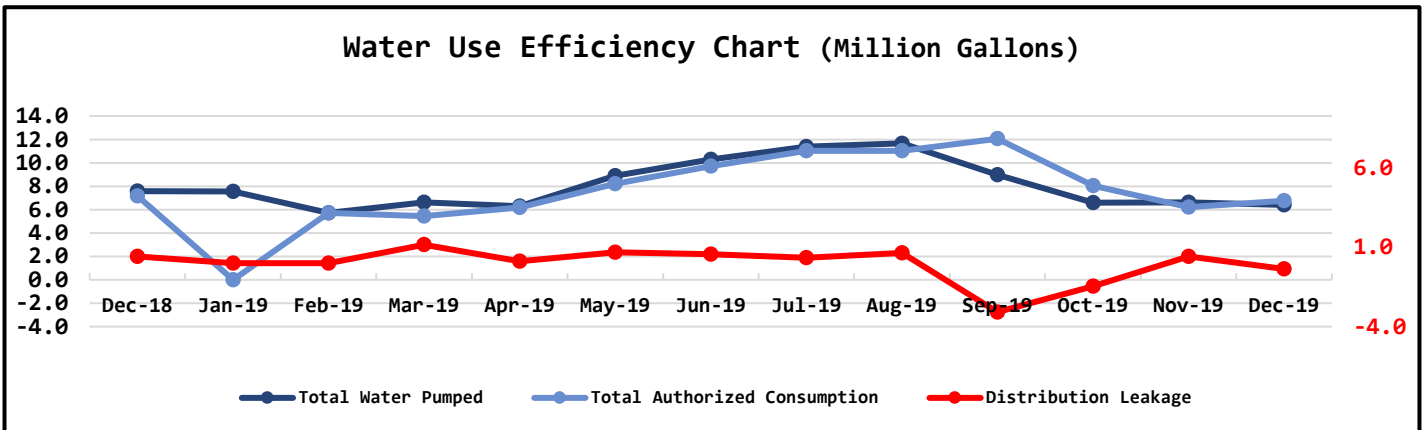


# NORTH BEACH WATER DISTRICT GENERAL MANAGERS REPORT

FOR  
January-2020

Metering Period		Water Production		
December 1, 2019	to	December 31, 2019	NWF Master Meter	6.0255 mg
			SWF Master Meter	0.3770 mg
			Total Water Pumped	6.4025 mg

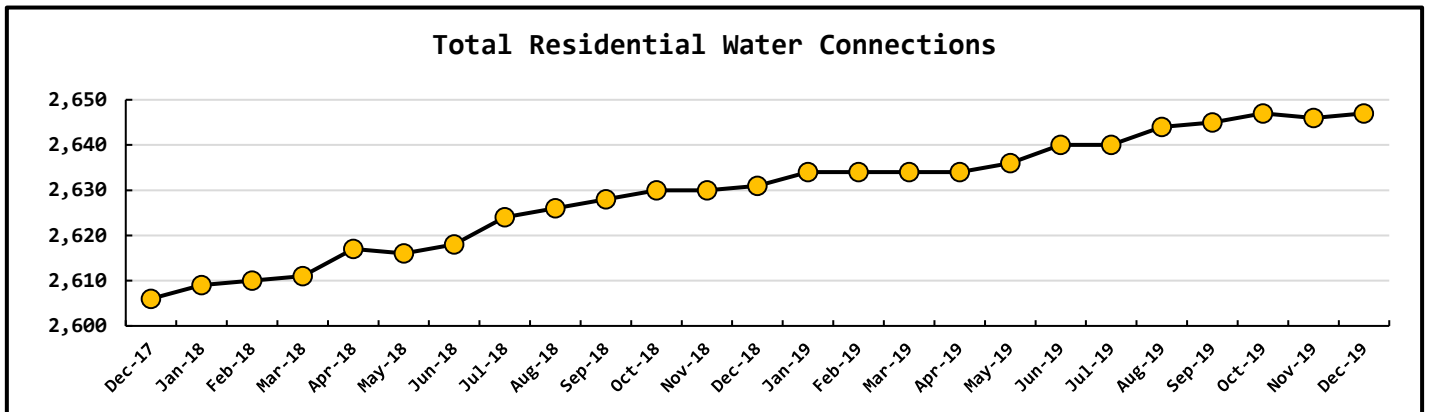
Metering Period		Water Consumption		
December 1, 2019	to	December 31, 2019	Total Water Sold	5.9918 mg
			NWF Backwash	0.1224 mg
			SWF Backwash	0.0777 mg
			Distribution Flushing	0.5708 mg
			Total Authorized Consumption	6.7627 mg
			Distribution Leakage	-0.3601 mg
			Percent of DSL	-5.6% %

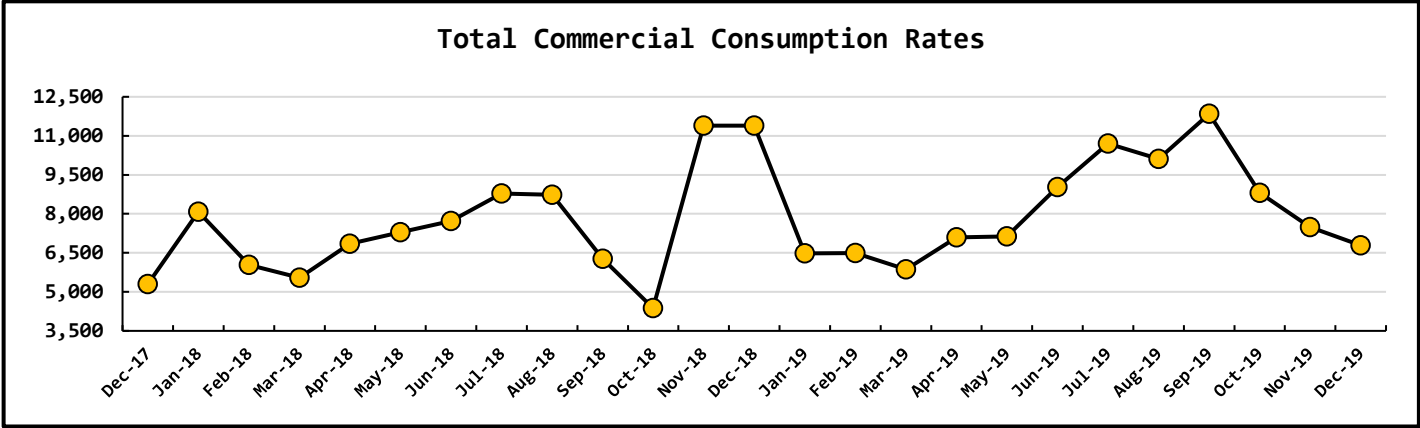
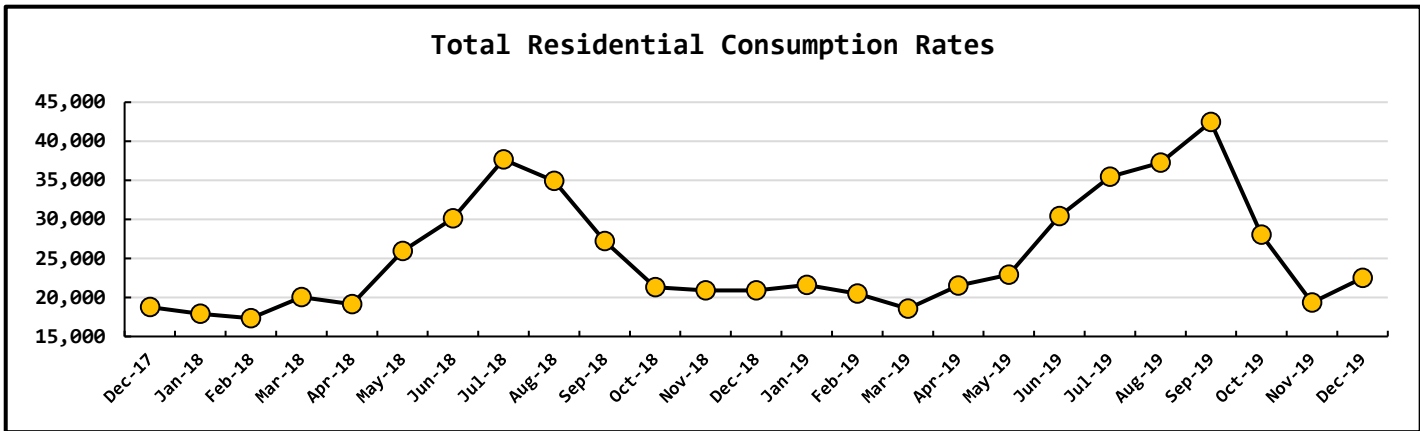
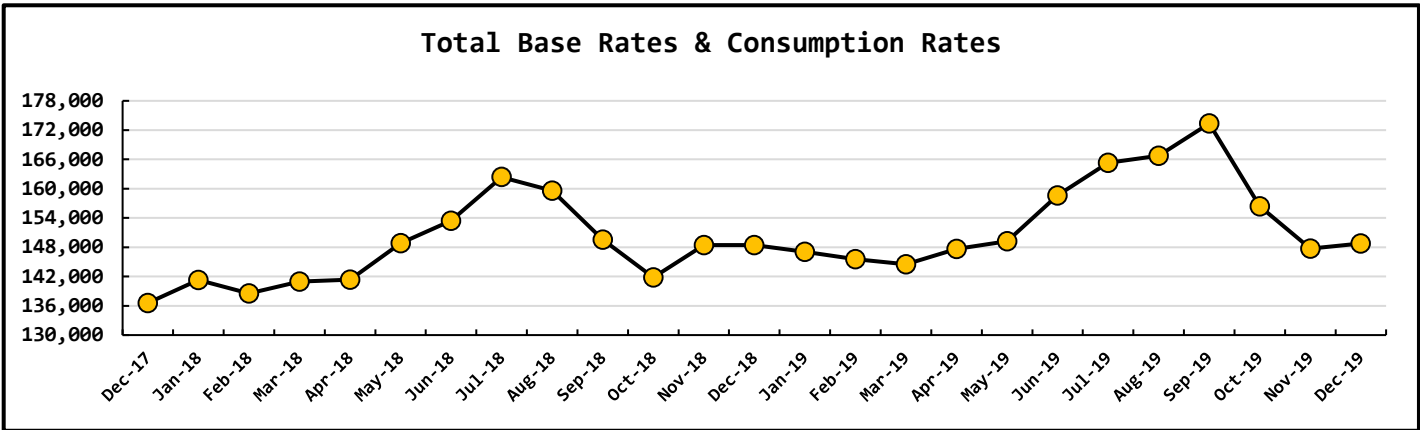


Data Period	Booster System Data		
December, 2019	North Wellfield Booster High	759	<i>gpm</i>
	North Wellfield Booster Low	0	<i>gpm</i>
	North Wellfield Booster Average	139	<i>gpm</i>
	South Wellfield Booster High	267	<i>gpm</i>
	South Wellfield Booster Low	0	<i>gpm</i>
	South Wellfield Booster Average	8	<i>gpm</i>
	North Wellfield Booster High	73	<i>psi</i>
	North Wellfield Booster Low	38	<i>psi</i>
	North Wellfield Booster Average	60	<i>psi</i>
	South Wellfield Booster High	70	<i>psi</i>
	South Wellfield Booster Low	0	<i>psi</i>
	South Wellfield Booster Average	61	<i>psi</i>

Data Period	Well Field Data		
December, 2019	North Wellfield Total	0.3664	<i>mg</i>
	South Wellfield Total	6.6909	<i>mg</i>

Data Period	Accounts Data		
December, 2019	Residential Base Rate	111,388	\$
	Residential Consumption	22,489	\$
	Commercial Base Rate	8,134	\$
	Commercial Consumption	6,790	\$
	Fire Flow Rate	1,024	\$
	Backflow Assembly Rates	177	\$
	Surfside Contract	0	\$
	Surfside Reimbursement	0	\$
	Other Fees & Charges	3,674	\$
	Total	153,676	\$
	Residential Accounts	2,647	<i>ea</i>
	Commercial Accounts	101	<i>ea</i>
Fire Flow Accounts	4	<i>ea</i>	
Backflow Accounts	26	<i>ea</i>	





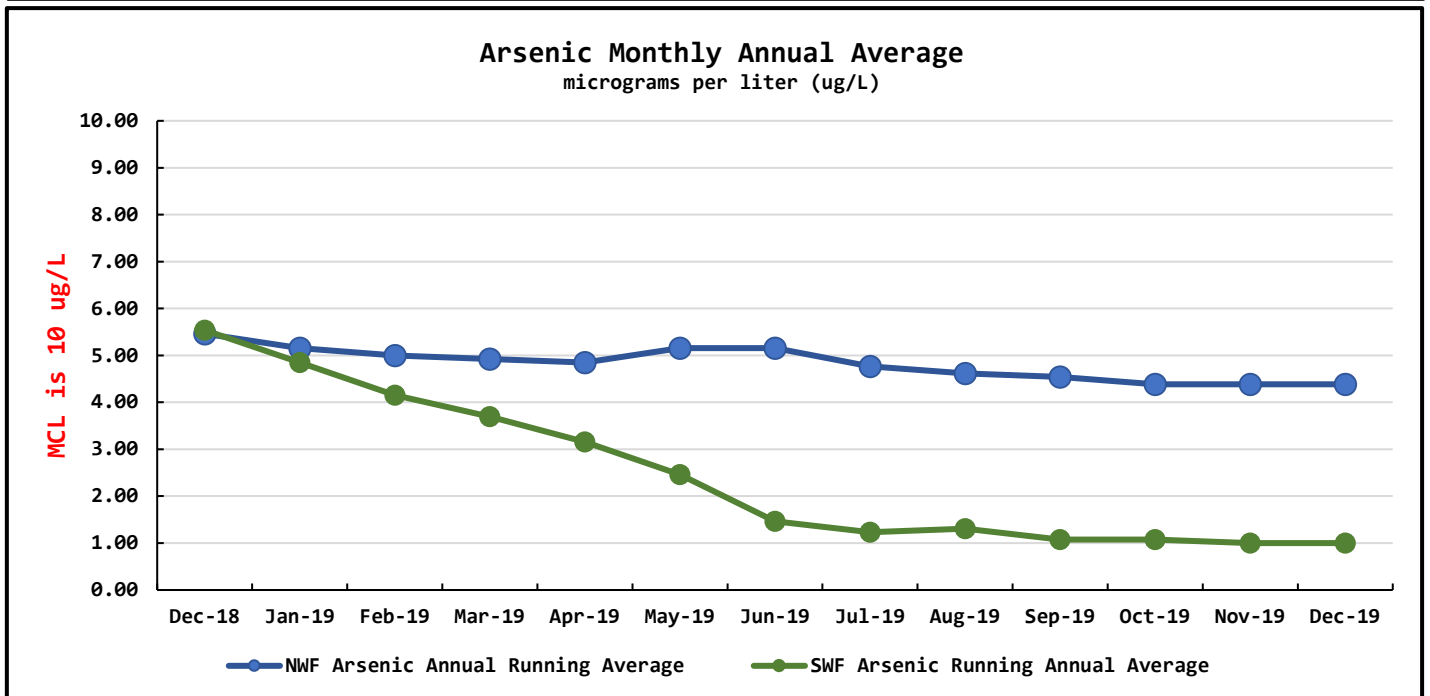
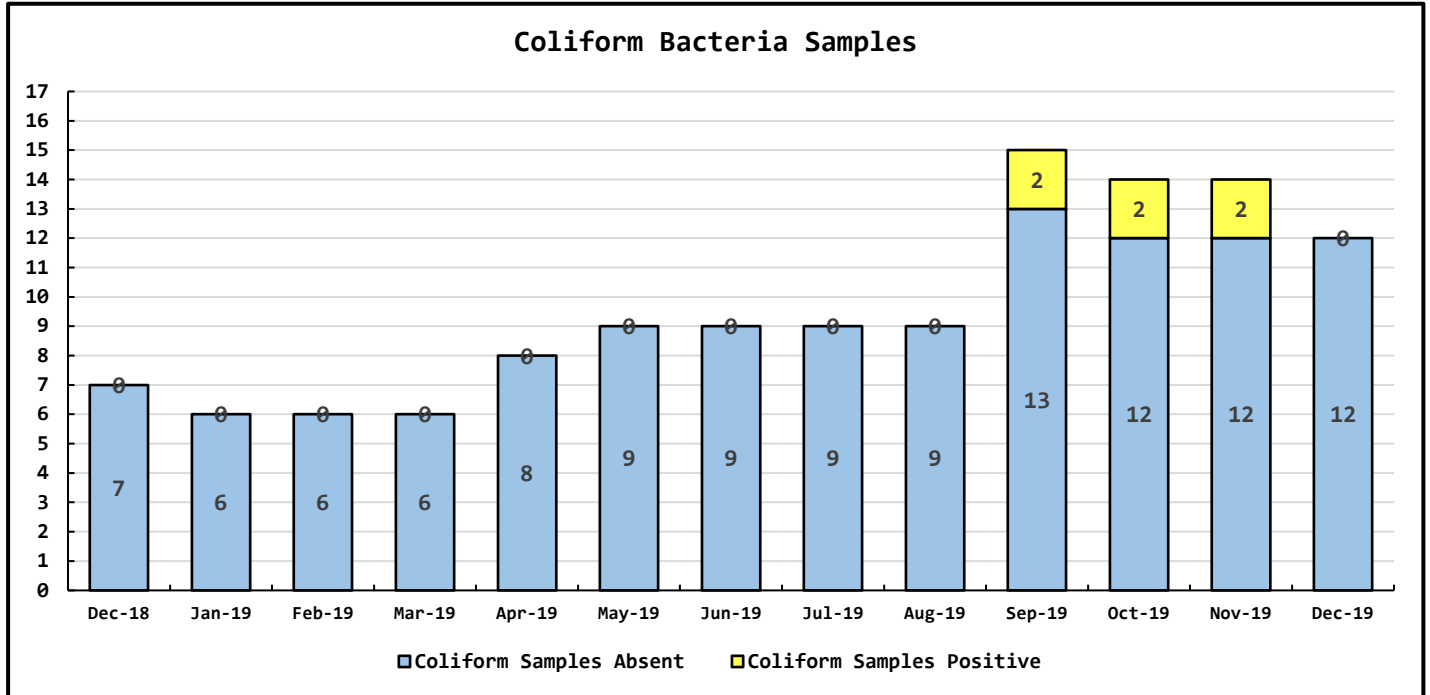
Data Period	Operations Data		
December, 2019	Past Due Accounts	272	ea
	Properties with Liens	35	ea
	Accounts Locked Off	4	ea
	Water Main Locates	14	ea
	Water Quality Complaints	1	ea
	Customer Service Calls	56	ea
	Customer Valves Installed	0	ea
	New Services Installed	1	ea

**Data Period**

**Water Quality Data**

December, 2019

Coliform Samples Collected	12	ea
Coliform Samples Absent	12	ea
Coliform Samples Positive	0	ea
Coliform Sample Positive E. coli	0	ea
NWF Arsenic Annual Running Average	4.38	ug/L
SWF Arsenic Running Annual Average	1.00	ug/L



## General Manager's January Report - 2020

### North Wellfield Treatment Plant

The NWF treatment plant is treating all contaminants to below the maximum contaminant levels (MCL). During January, the NWF supplied all of the water for the distribution system. We have started installing chlorination equipment in the NWF booster station. We should be complete by February 15, 2020. The Office of Drinking Water (ODW) has given us until February 15, 2020 to complete installing all chlorination equipment. See attached letter.

### South Wellfield Treatment Plant

The SWF treatment plant has been offline in January. The chemical feed lines for Ferric Chloride and Potassium Permanganate were repositioned from near the ceiling to near the floor. We did this for two reasons. First, keeping the chemical lines closer to the floor is much safer for employees and equipment in the event of a leak or line failure. Second, keeping the feed lines at a lower elevation eliminates the possibility of siphoning of chemical and overdosing.

We have started installing chlorination equipment. We will have all of the chlorination equipment installed by February 1, 2020. The ODW has given us until February 15, 2020 to complete installing all chlorination equipment.

**273<sup>rd</sup> Lane Water Main Extension:** The crew completed the water main extension for John Kendal on 273<sup>rd</sup> Lane in January. The Board approved that project by motion and unanimous vote at the August 19, 2019 regular meeting.

**Water Main Breaks and Leaks:** The crew repaired a leak at the Great Northwest Credit Union, 1409 251<sup>st</sup> Place in January.

**Meter Reading Software:** The new meter reading software has been ordered. We are working with the software vendor to schedule installation, implementation, and training.

### Arsenic Testing:

- 12/03/2019 – South Well Field Arsenic <0.001
- 12/02/19 – North Well Field Arsenic 0.004

### Coliform Bacteria Testing:

- 12/03/19 – Sample Sites S16, S19, S9, Investigative, all Satisfactory
- 12/09/19 - Sample Sites S1, S13, S12, Compliance, all Satisfactory
- 12/16/19 – S26, S3, S4, S13, Compliance, all Satisfactory
- 12/18/19 – 273<sup>rd</sup> New construction, Satisfactory. Line opened up.



STATE OF WASHINGTON  
DEPARTMENT OF HEALTH  
SOUTHWEST DRINKING WATER REGIONAL OPERATIONS  
*PO Box 47823, Olympia, Washington 98504-7823*  
*TDD Relay 1-800-833-6388*

January 17, 2020

Rick Gray  
North Beach Water  
Post Office Box 618  
Ocean Park, Washington 98640

Subject: North Beach Water, ID #630000, Pacific County; October and November 2019  
Level 2 Assessment Response & Directive Letter

Dear Rick Gray:

Thank you for providing the Office of Drinking Water (ODW) with the completed Level 2 Assessments as required by the coliform Treatment Technique Triggers in October and November 2019. We find the assessments to be adequate. No likely cause was identified in either assessment that would lead to system wide contamination. Since no sanitary defects were identified, you must install and maintain disinfection treatment permanently to reduce bacteriological contamination risk in the distribution system.

By February 15, 2020, submit:

- Documentation that disinfection treatment has been installed at both the North and South wellfields. Disinfection reports documenting a detectable chlorine residual (0.2 milligrams per liter (mg/L) or greater) throughout the distribution system on the enclosed report.

By **May 31, 2020**, submit a project report and construction documents for the treatment that is installed at both treatment plants.

Please note that this letter replaces the previous directive letter issued on August 9, 2019, and eliminates the requirement for the Corrective Action Plan which was approved on October 28, 2019. A pilot study is not necessary at this point. Disinfection By-Product monitoring will indicate whether additional treatment will be necessary.

Rick Gray  
January 17, 2020  
Page 2

If you have any questions, please call me at (360) 236-3032 or by e-mail at [teresa.walker@doh.wa.gov](mailto:teresa.walker@doh.wa.gov), or Nick Fitzgerald at (360) 236-3037 or by e-mail at [nick.fitzgerald@doh.wa.gov](mailto:nick.fitzgerald@doh.wa.gov).

Sincerely,



Teresa Walker, P.E.  
Office of Drinking Water, Regional Engineer

Enclosures

cc: Shawn Humphreys, Pacific County Community Development  
Nick Fitzgerald, ODW  
Charese Gainor, ODW  
Gael Kantz, ODW



## DISTRIBUTION CHLORINE RESIDUAL REPORT FORM

<b>Water System Name</b> North Beach Water		<b>Month/Year</b>	
<b>County:</b> Pacific	<b>ID#:</b> 63000.0	<b>Report submitted by</b>	
<b>Treatment Plant #:</b> 63000001 & 002		<b>Operator Certificate#</b>	
<b>Requirements:</b>		<b>Telephone #</b>	
<b>Cl<sub>2</sub> Residual:</b> 0.2	<b>mg/L in distribution</b>	<b>Signature:</b>	
<b>Monitoring required:</b> 5	<b>days per week</b>		

Date	Water Production Gallons or ft <sup>3</sup>	Chlorine Solution Used		Treated Water Quality			Sampler Initial
	Source Meter Reading	Tank Level (Gallons/Pounds)	Volume Used (Gallons/Pounds)	Distribution Cl <sub>2</sub> Residual (mg/L)	Distribution Sample Location	Troubleshooting Notes Also record additional residual readings following a low or zero residual reading	
1							
2							
3							
4							
5							
6							
7							
8							
9							
10							
11							
12							
13							
14							
15							
16							
17							
18							
19							
20							
21							
22							
23							
24							
25							
26							
27							
28							
29							
30							
31							
<b>Total</b>	0			0	← Total number of measurements collected		
<b>Max</b>				0.00			
<b>Min</b>				0.00			

Please keep a copy for your records and send report by the 10th of the following month to your Regional Office.  
See instructions page.