

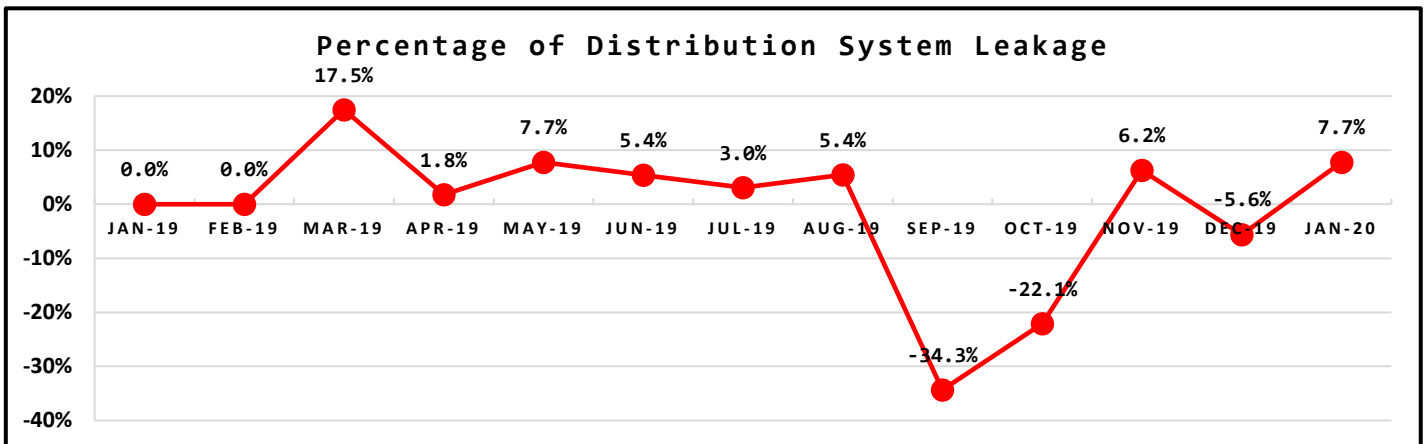
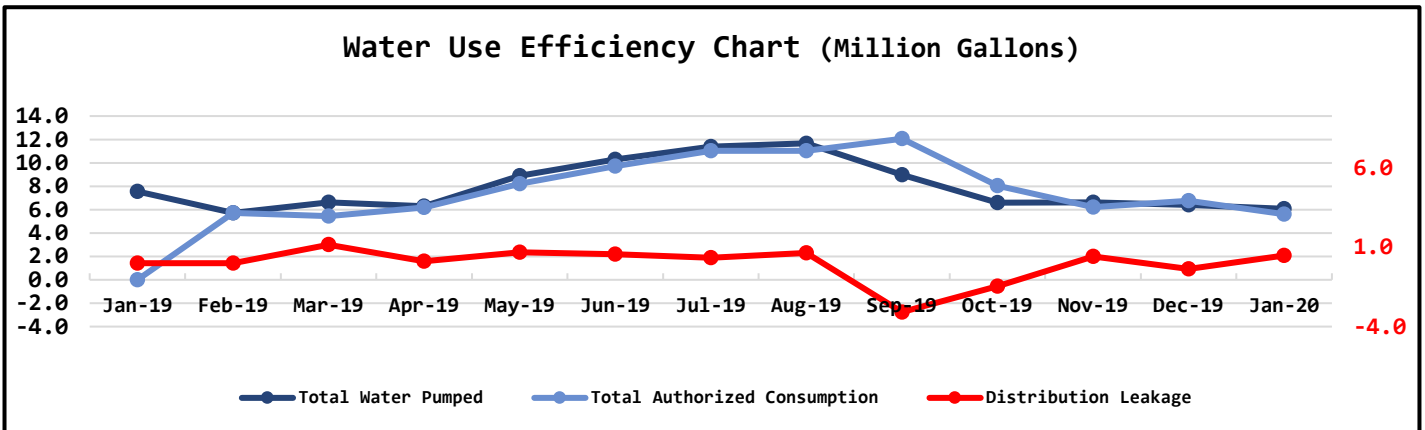
NORTH BEACH WATER DISTRICT

GENERAL MANAGERS REPORT

FOR
January-2020

| Metering Period | | Water Production | | |
|------------------|----|-------------------|--------------------|-----------|
| December 1, 2019 | to | December 31, 2019 | NWF Master Meter | 6.0465 mg |
| | | | SWF Master Meter | 0.0366 mg |
| | | | Total Water Pumped | 6.0831 mg |

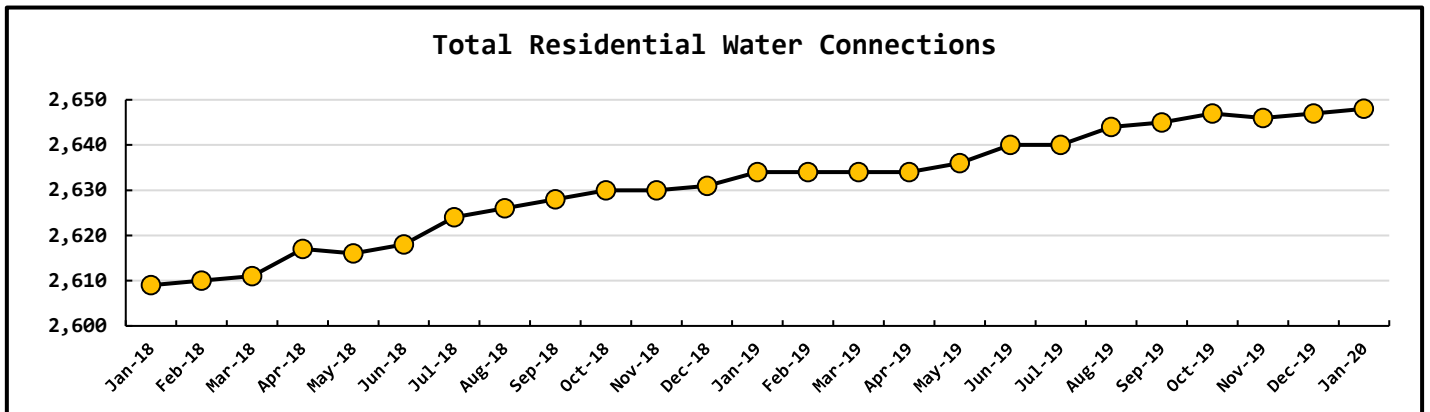
| Metering Period | | Water Consumption | | |
|------------------|----|-------------------|------------------------------|-----------|
| December 1, 2019 | to | December 31, 2019 | Total Water Sold | 5.5665 mg |
| | | | NWF Backwash | 0.0019 mg |
| | | | SWF Backwash | 0.0019 mg |
| | | | Distribution Flushing | 0.0417 mg |
| | | | Total Authorized Consumption | 5.6120 mg |
| | | | Distribution Leakage | 0.4711 mg |
| | | | Percent of DSL | 7.7% % |

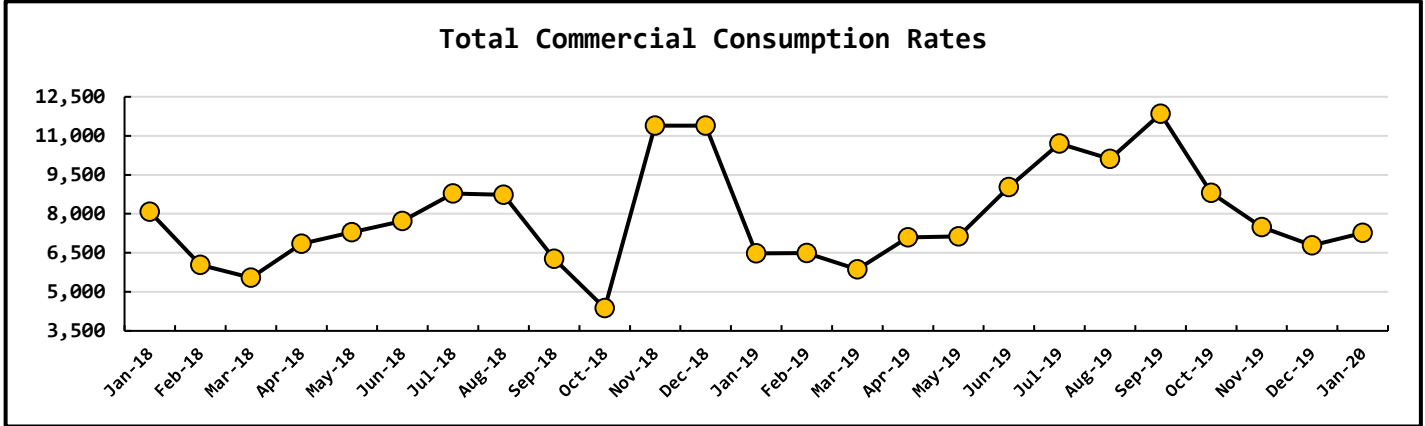
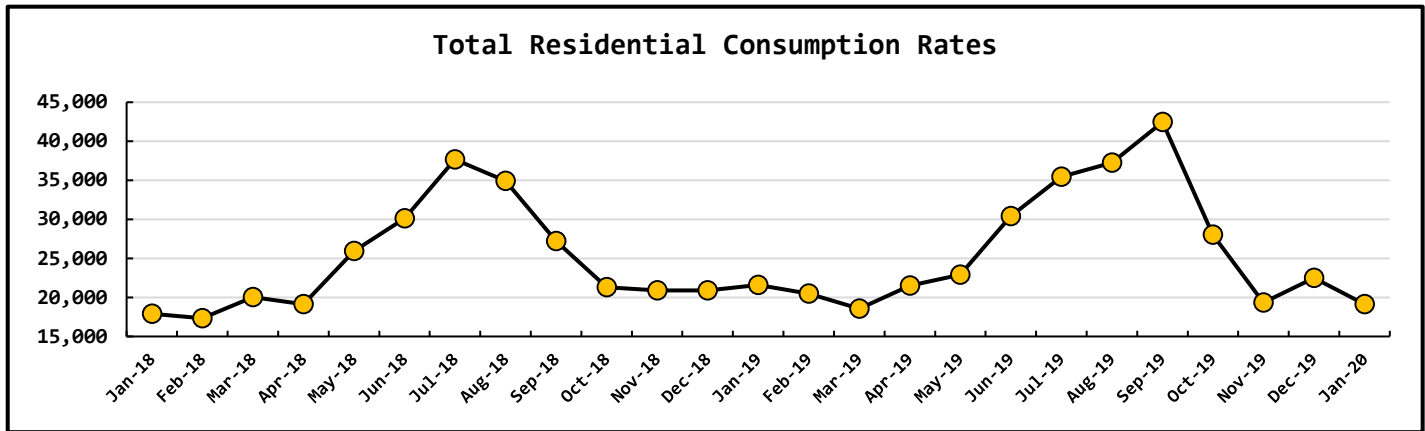
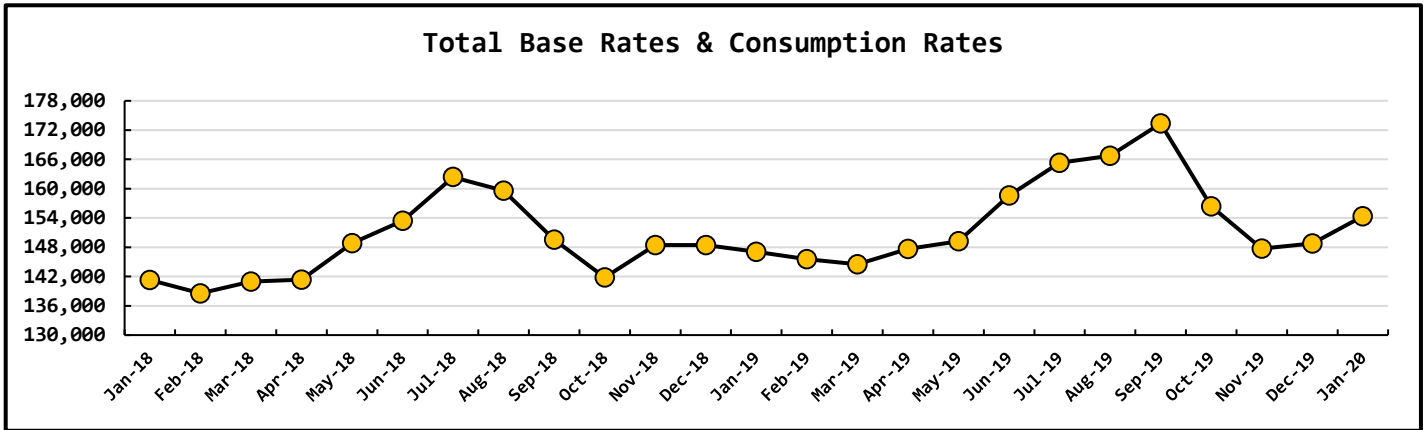


| Data Period | Booster System Data | | |
|----------------|-------------------------------------|-----|------------|
| December, 2019 | North Wellfield Booster High | 628 | <i>gpm</i> |
| | North Wellfield Booster Low | 0 | <i>gpm</i> |
| | North Wellfield Booster Average | 134 | <i>gpm</i> |
| | South Wellfield Booster High | 0 | <i>gpm</i> |
| | South Wellfield Booster Low | 0 | <i>gpm</i> |
| | South Wellfield Booster Average | 0 | <i>gpm</i> |
| | psi North Wellfield Booster High | 65 | <i>psi</i> |
| | psi North Wellfield Booster Low | 48 | <i>psi</i> |
| | psi North Wellfield Booster Average | 60 | <i>psi</i> |
| | psi South Wellfield Booster High | 66 | <i>psi</i> |
| | psi South Wellfield Booster Low | 0 | <i>psi</i> |
| | psi South Wellfield Booster Average | 61 | <i>psi</i> |

| Data Period | Well Field Data | | |
|----------------|-----------------------|--------|-----------|
| December, 2019 | North Wellfield Total | 6.0465 | <i>mg</i> |
| | South Wellfield Total | 0.0366 | <i>mg</i> |

| Data Period | Accounts Data | | |
|-------------------|-------------------------|----------------|-----------|
| December, 2019 | Residential Base Rate | 119,284 | \$ |
| | Residential Consumption | 19,136 | \$ |
| | Commercial Base Rate | 8,670 | \$ |
| | Commercial Consumption | 7,273 | \$ |
| | Fire Flow Rate | 1,108 | \$ |
| | Backflow Assembly Rates | 181 | \$ |
| | Surfside Contract | 0 | \$ |
| | Surfside Reimbursement | 0 | \$ |
| | Other Fees & Charges | 1,792 | \$ |
| | Total | 157,444 | \$ |
| | Residential Accounts | 2,648 | <i>ea</i> |
| | Commercial Accounts | 100 | <i>ea</i> |
| | Fire Flow Accounts | 4 | <i>ea</i> |
| Backflow Accounts | 26 | <i>ea</i> | |





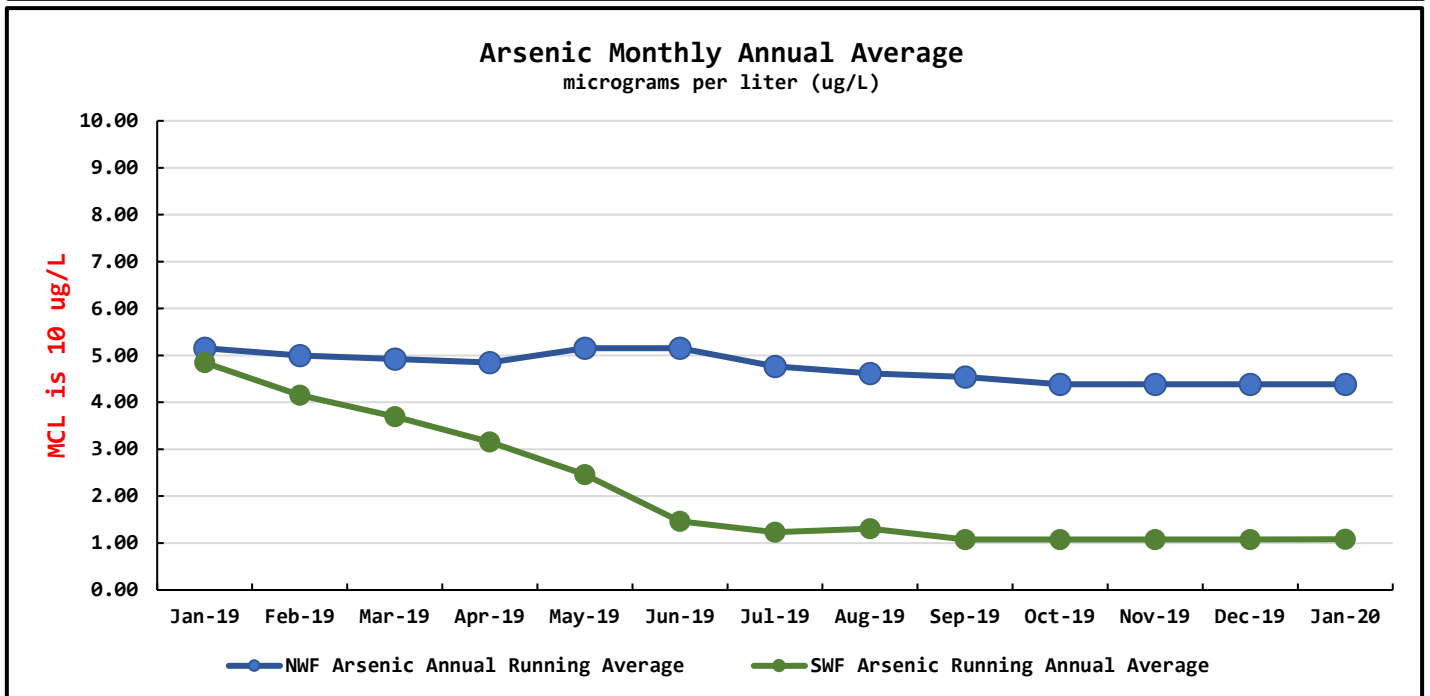
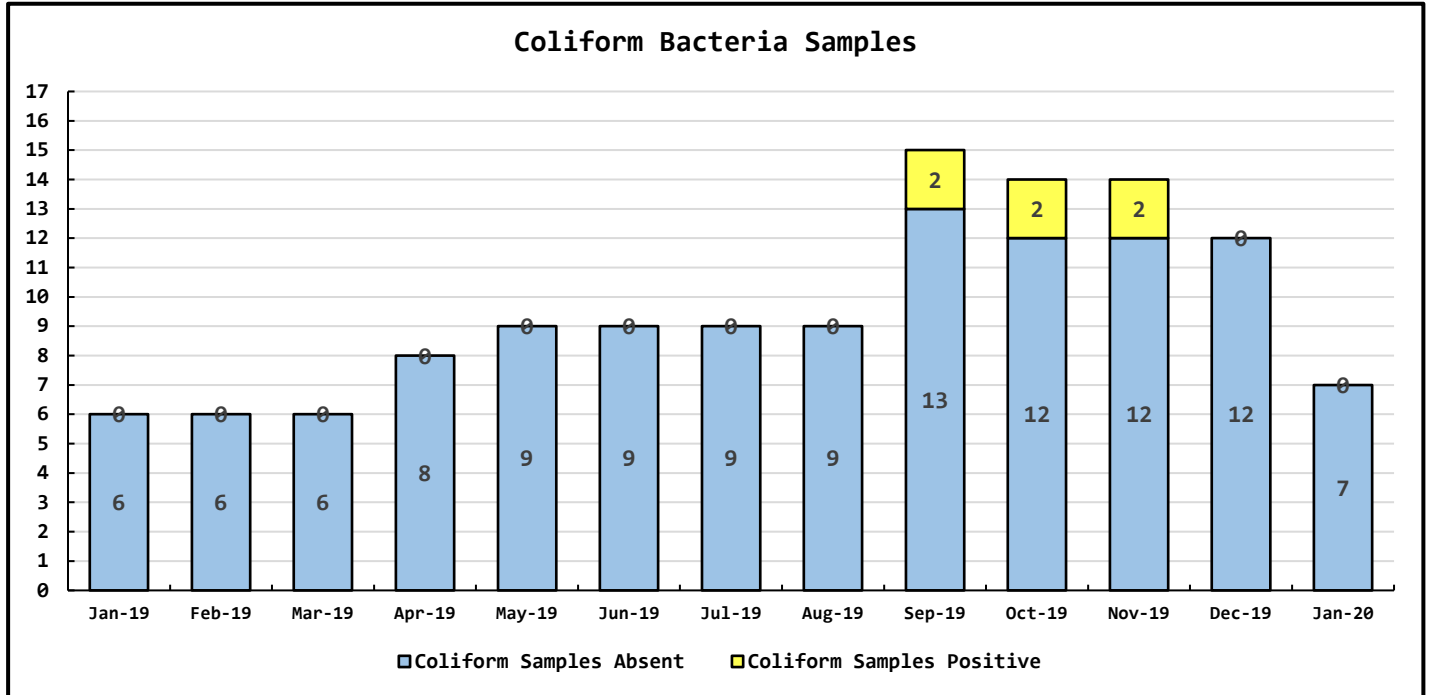
| Data Period | Operations Data | | |
|----------------|---------------------------|-----|-----------|
| December, 2019 | Past Due Accounts | 290 | <i>ea</i> |
| | Properties with Liens | 35 | <i>ea</i> |
| | Accounts Locked Off | 9 | <i>ea</i> |
| | Water Main Locates | 24 | <i>ea</i> |
| | Water Quality Complaints | 3 | <i>ea</i> |
| | Customer Service Calls | 48 | <i>ea</i> |
| | Customer Valves Installed | 0 | <i>ea</i> |
| | New Services Installed | 0 | <i>ea</i> |

Data Period

Water Quality Data

December, 2019

| | | |
|------------------------------------|------|------|
| Coliform Samples Collected | 7 | ea |
| Coliform Samples Absent | 7 | ea |
| Coliform Samples Positive | 0 | ea |
| Coliform Sample Positive E. coli | 0 | ea |
| NWF Arsenic Annual Running Average | 4.38 | ug/L |
| SWF Arsenic Running Annual Average | 1.08 | ug/L |



General Manager's February Report - 2020

North Wellfield (NWF) Treatment Plant

The NWF treatment plant is treating all contaminants to below the maximum contaminant levels (MCL).

The NWF Chlorine feed equipment will be installed and functional by February 29, 2020.

South Wellfield Treatment Plant

Due to chlorination requirements, the SWF treatment plant and booster station has been offline since November 21, 2019.

Chlorine feed will be installed and functional by February 15, 2020.

Water Main Breaks and Leaks:

No leaks or main breaks in January 2019.

Activities:

The crew installed Backflow device at kiss of mist. To date, the District has installed 27 double check vales through the Backflow Preventer Assistance Program¹.

Coordinates for all fire hydrants & water sample sites have been collected and the GIS map have been updated to include that data. The crew in currently collecting coordinates for distribution valves. We are updating the GIS map as that data is collected.

All of the materials for the U Street Water Main Extension have been delivered. The work will be completed in March.

The chlorination equipment installation project is nearing completion. We anticipate meeting all of the Office of Drinking Water compliance requirements. Once all of the equipment has been installed the work of achieving the state mandated chlorine dose will start. It will take up to a year to work out the proper dosing protocols. It is our intention to start low and work our way up to the minimum approved chlorine dose.

To date we have spent approximately \$15,000 on the chlorination project. \$7,000 in 2020 and \$8,000 in 2019. We should complete this project well under the \$50,000 in the 2020 budget.

John Fleming, Joshua Maxey, and Nikkie Hall attended a two-day training class on "Interpersonal Communication²" in Olympia Washington on February 6 and 7. The class was offered through Washington State Department of Enterprise Services. The class teaches attendees how to interact with others by communicating in a way that supports their own communication style. John, Joshua, and Nikkie all thought the class was very beneficial. The rest of the crew will be attending class in April and June.

¹ Resolution 29-2014

² <https://des.wa.gov/training/CourseDescription/17>