

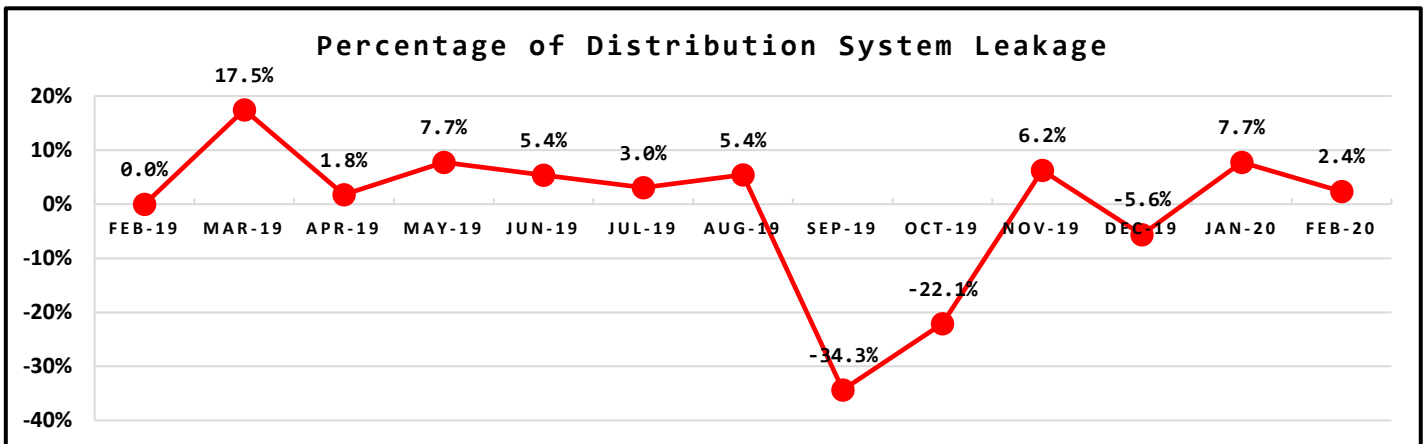
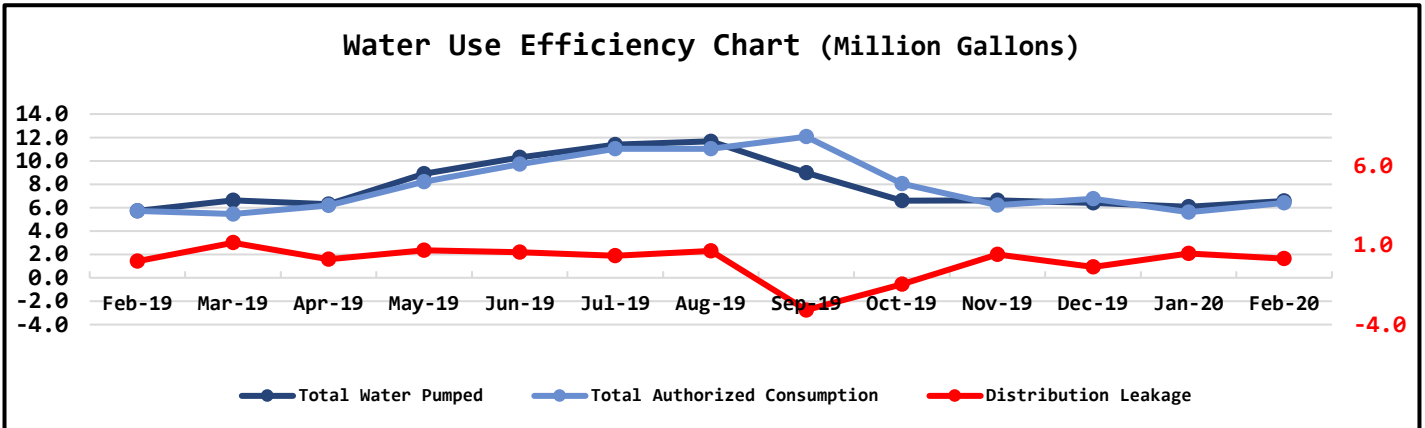
NORTH BEACH WATER DISTRICT

GENERAL MANAGERS REPORT

FOR
February-2020

Metering Period		Water Production		
February 1, 2020	to	February 29, 2020	NWF Master Meter	6.4041 mg
			SWF Master Meter	0.1575 mg
			Total Water Pumped	6.5616 mg

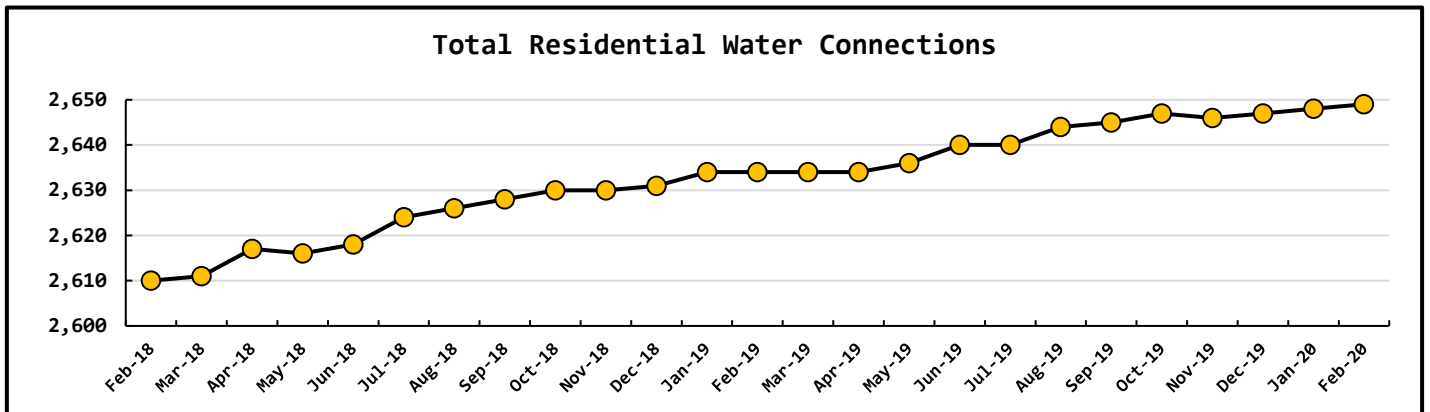
Metering Period		Water Consumption		
February 1, 2020	to	February 29, 2020	Total Water Sold	6.1471 mg
			NWF Backwash	0.0017 mg
			SWF Backwash	0.0311 mg
			Distribution Flushing	0.2257 mg
			Total Authorized Consumption	6.4056 mg
			Distribution Leakage	0.1560 mg
			Percent of DSL	2.4% %

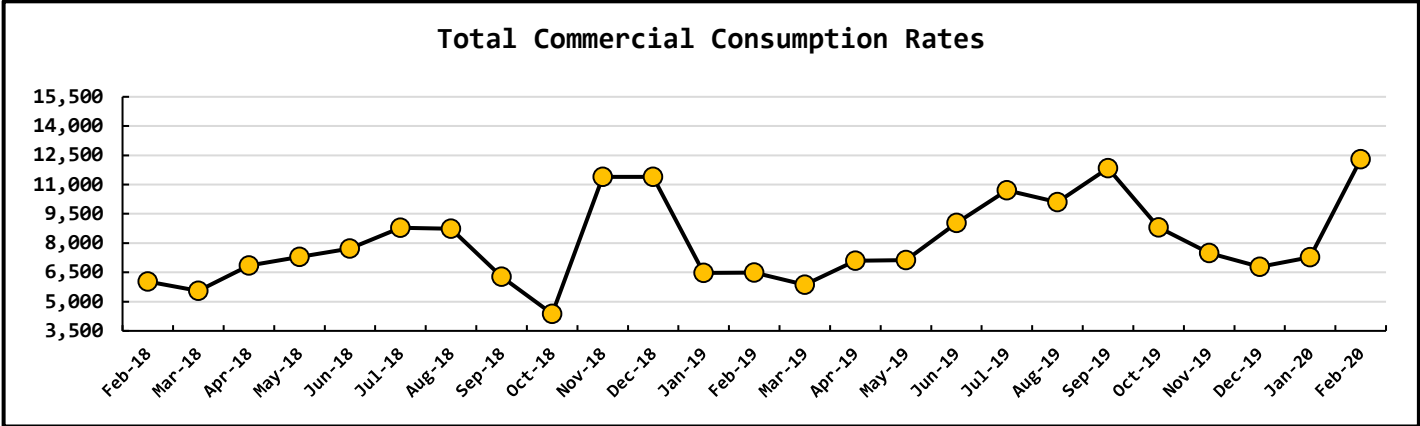
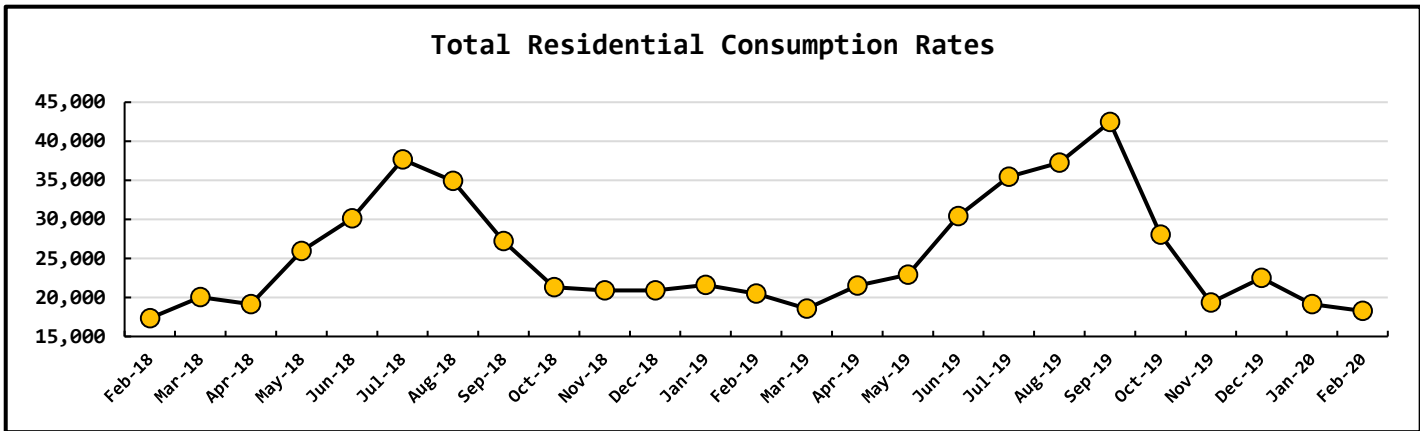
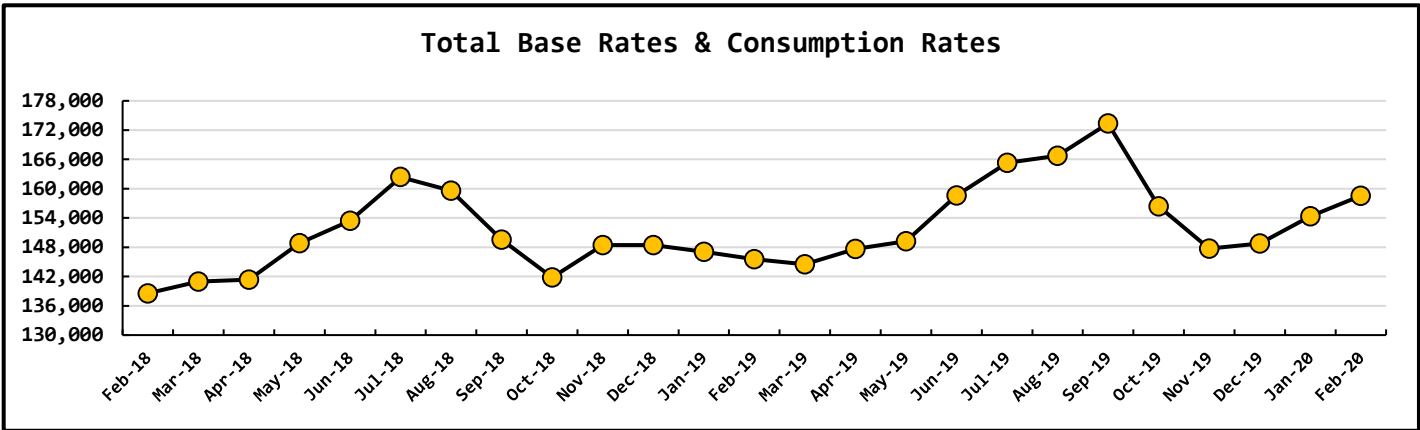


Data Period	Booster System Data		
February, 2020	North Wellfield Booster High	724	<i>gpm</i>
	North Wellfield Booster Low	0	<i>gpm</i>
	North Wellfield Booster Average	139	<i>gpm</i>
	South Wellfield Booster High	0	<i>gpm</i>
	South Wellfield Booster Low	0	<i>gpm</i>
	South Wellfield Booster Average	0	<i>gpm</i>
	North Wellfield Booster High	72	<i>psi</i>
	North Wellfield Booster Low	45	<i>psi</i>
	North Wellfield Booster Average	59	<i>psi</i>
	South Wellfield Booster High	69	<i>psi</i>
	South Wellfield Booster Low	39	<i>psi</i>
	South Wellfield Booster Average	61	<i>psi</i>

Data Period	Well Field Data		
February, 2020	North Wellfield Total	6.4041	<i>mg</i>
	South Wellfield Total	0.1575	<i>mg</i>

Data Period	Accounts Data					
February, 2020	Residential Base Rate		119,292	\$		
	Residential Consumption		18,266	\$		
	Commercial Base Rate		8,670	\$		
	Residential Accounts	2,649	<i>ea</i>	Commercial Consumption	12,300	\$
	Commercial Accounts	100	<i>ea</i>	Fire Flow Rate	1,108	\$
	Fire Flow Accounts	4	<i>ea</i>	Backflow Assembly Rates	188	\$
	Backflow Accounts	27	<i>ea</i>	Surfside Contract	0	\$
	Surfside Reimbursement		0	\$		
	Other Fees & Charges		5,297	\$		
	Total		165,120	\$		





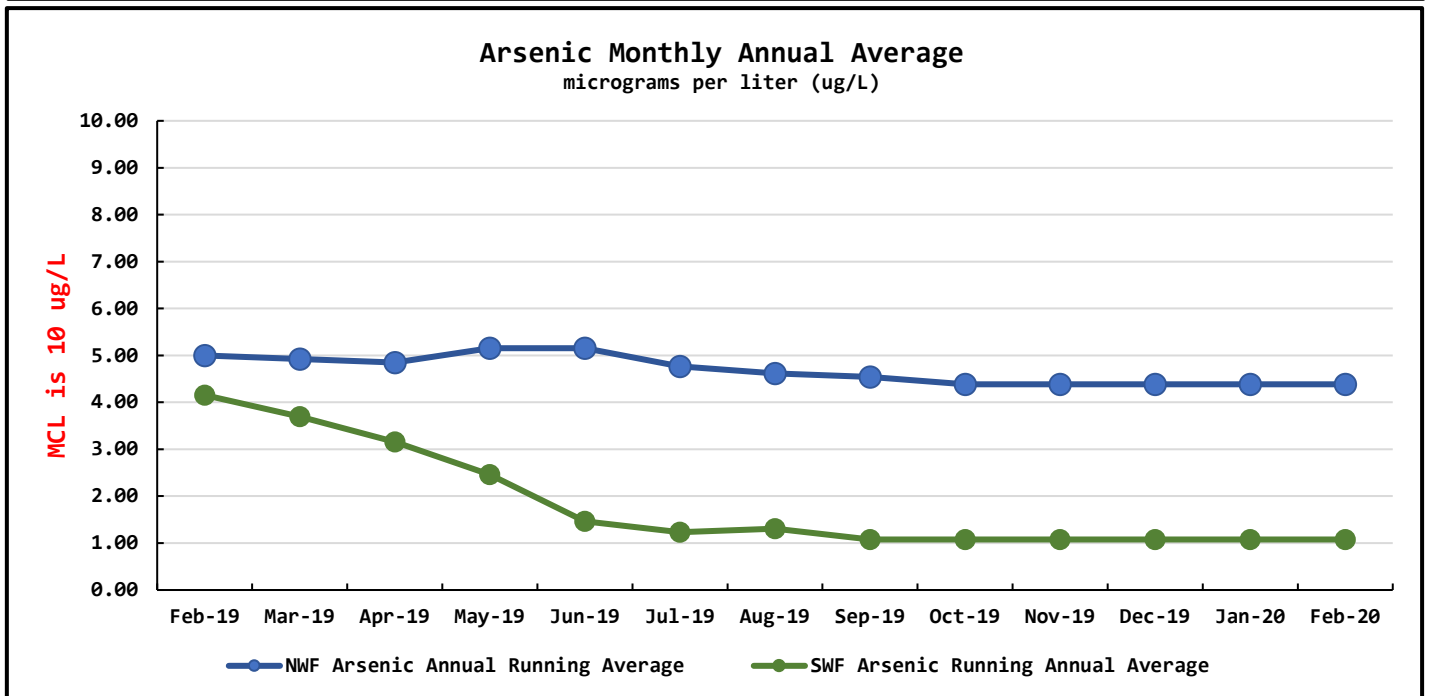
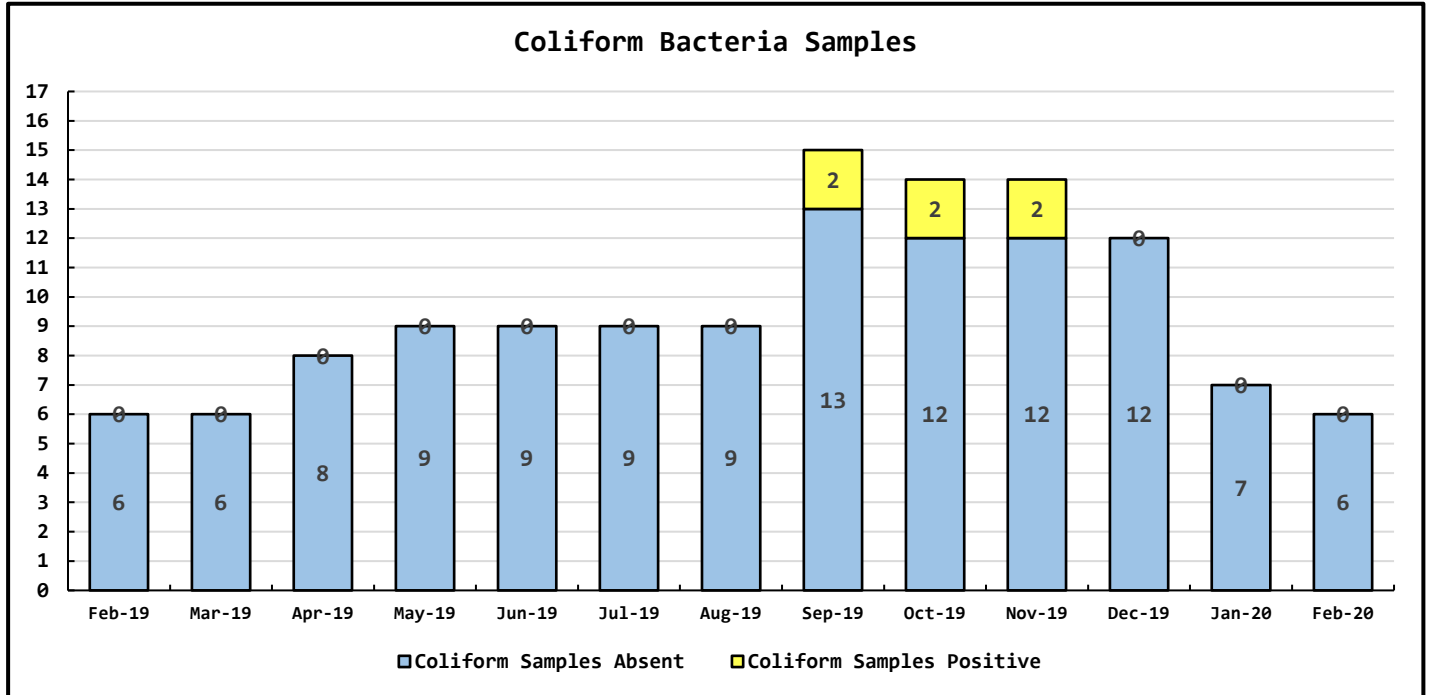
Data Period	Operations Data	
February, 2020	Past Due Accounts	277 <i>ea</i>
	Properties with Liens	34 <i>ea</i>
	Accounts Locked Off	9 <i>ea</i>
	Water Main Locates	26 <i>ea</i>
	Water Quality Complaints	0 <i>ea</i>
	Customer Service Calls	53 <i>ea</i>
	Customer Valves Installed	0 <i>ea</i>
	New Services Installed	0 <i>ea</i>

Data Period

Water Quality Data

February, 2020

Coliform Samples Collected	6	ea
Coliform Samples Absent	6	ea
Coliform Samples Positive	0	ea
Coliform Sample Positive E. coli	0	ea
NWF Arsenic Annual Running Average	4.38	ug/L
SWF Arsenic Running Annual Average	1.08	ug/L



General Manager's February Report - 2020

North Wellfield (NWF) Treatment Plant

The NWF treatment plant is treating all contaminants to below the maximum contaminant levels (MCL). Chlorine system Online.

South Wellfield Treatment Plant

The SWF treatment plant is treating all contaminants to below the maximum contaminant levels (MCL). Chlorine system Online.

Water Main Breaks and Leaks:

216th on HWY Mainline. Tightened, but leak still an issue. Part ordered and will be rescheduled in March for repair.

New Services:

11760 200th Lane

Activities:

Jake Nesbitt, Raymond Hall, Joshua Maxey, & Jon Flemming all attended an AC Pipe Handlers refresher course at the Tinkerville Fire Station. Surfside HOA, Ilwaco PW, Long Beach PW & Chinook PW were in attendance. This is a yearly requirement. Like to see that all utilities are involved.

New Day Tank for ferric chloride installed at SWF.

GIS Project:

Meeting with Mark Scott scheduled for March 12, 2020. To walk crew thru process so they may have it on their phones.