

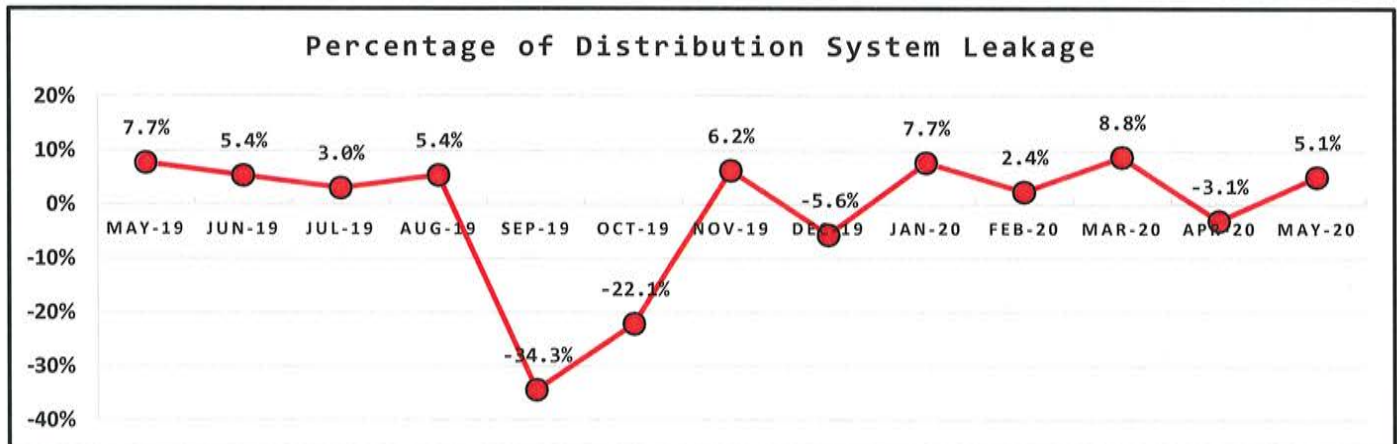
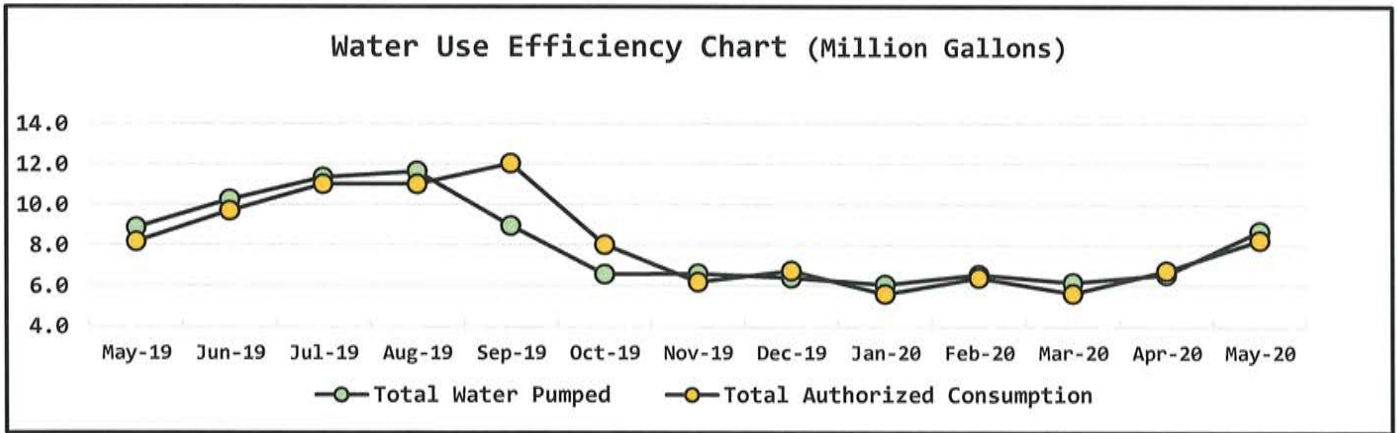
# NORTH BEACH WATER DISTRICT

## GENERAL MANAGERS REPORT

FOR  
June-2020

Metering Period		Water Production	
May 1, 2020	to	May 31, 2020	
		NWF Master Meter	3.8581 mg
		SWF Master Meter	4.8522 mg
		Total Water Pumped	8.7103 mg

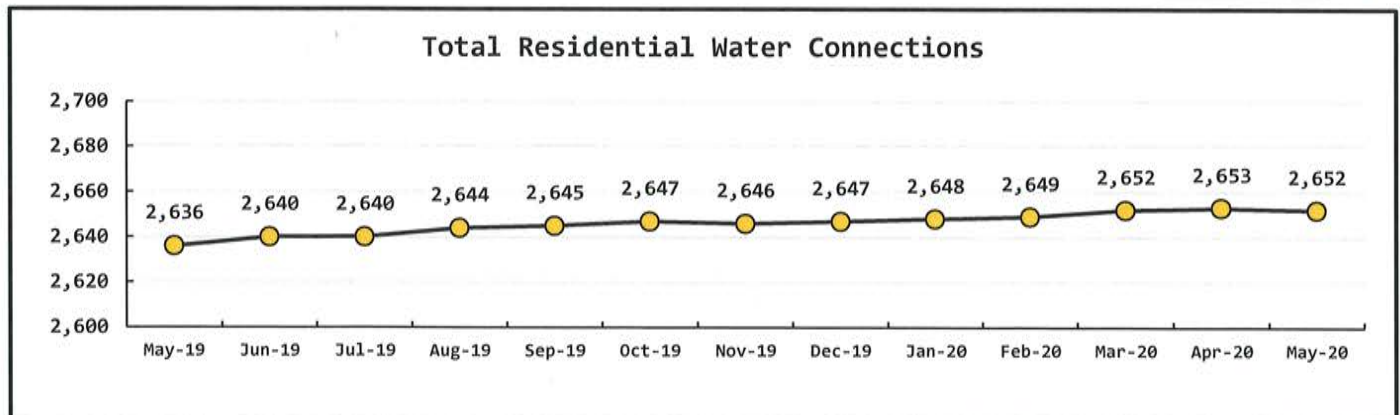
Metering Period		Water Consumption	
May 1, 2020	to	May 31, 2020	
		Total Water Sold	6.0203 mg
		NWF Backwash	0.1786 mg
		SWF Backwash	0.7600 mg
		Distribution Flushing, Fire Dept & Water use at NWF & SWF	1.3032 mg
		Total Authorized Consumption	8.2621 mg
		Distribution Leakage	0.4482 mg
		Percent of DSL	5.1% %



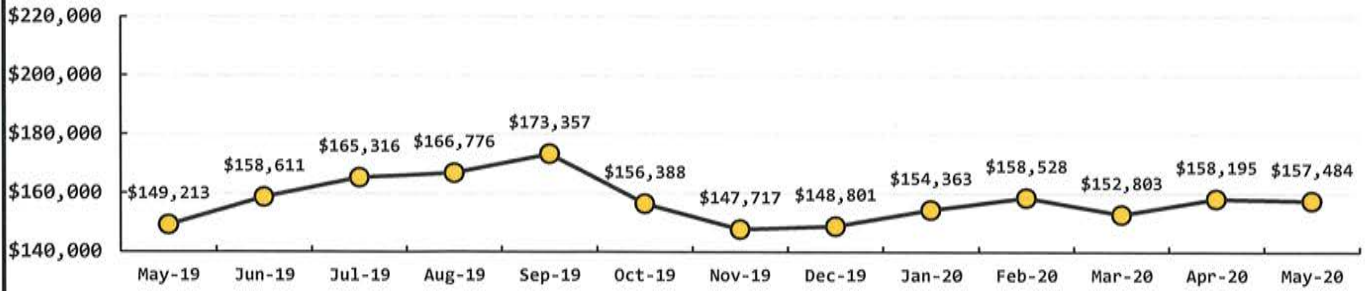
Data Period	Booster System Data		
May, 2020	North Wellfield Booster High	796	<i>gpm</i>
	North Wellfield Booster Low	0	<i>gpm</i>
	North Wellfield Booster Average	80	<i>gpm</i>
	South Wellfield Booster High	984	<i>gpm</i>
	South Wellfield Booster Low	0	<i>gpm</i>
	South Wellfield Booster Average	106	<i>gpm</i>
	North Wellfield Booster High	72	<i>psi</i>
	North Wellfield Booster Low	41	<i>psi</i>
	North Wellfield Booster Average	60	<i>psi</i>
	South Wellfield Booster High	72	<i>psi</i>
	South Wellfield Booster Low	38	<i>psi</i>
	South Wellfield Booster Average	61	<i>psi</i>

Data Period	Well Field Data		
May, 2020	North Wellfield Total	2.7799	<i>mg</i>
	South Wellfield Total	3.7847	<i>mg</i>

Data Period	Accounts Data					
May, 2020			Residential Base Rate	119,457	\$	
			Residential Consumption	22,917	\$	
			Commercial Base Rate	8,670	\$	
	Residential Accounts	2,652	<i>ea</i>	Commercial Consumption	6,440	\$
	Commercial Accounts	100	<i>ea</i>	Fire Flow Rate	1,108	\$
	Fire Flow Accounts	4	<i>ea</i>	Backflow Assembly Rates	188	\$
	Backflow Accounts	28	<i>ea</i>	Surfside Contract	0	\$
			Surfside Reimbursement	0	\$	
			Other Fees & Charges	280	\$	
			Total	159,060	\$	



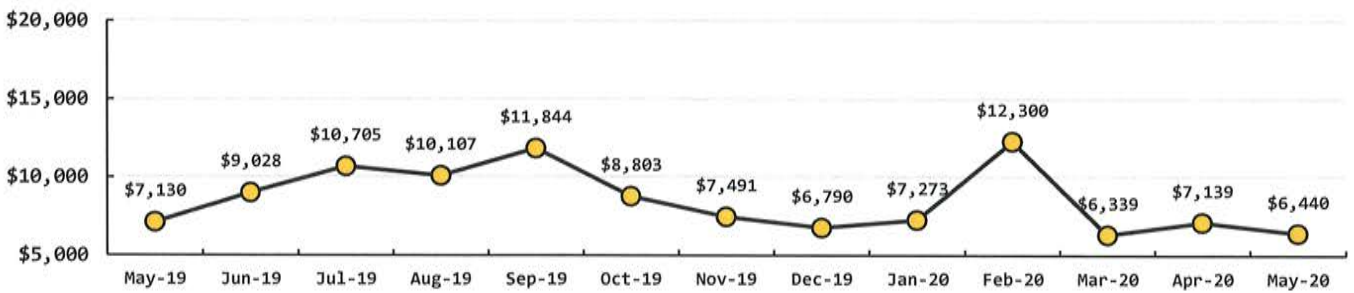
**Total Base Rates & Consumption Rates**



**Total Residential Consumption Rates**



**Total Commercial Consumption Rates**



**Data Period**

May, 2020

**Operations Data**

Past Due Accounts	242	ea
Properties with Liens	28	ea
Accounts Locked Off	0	ea
Water Main Locates	30	ea
Water Quality Complaints	1	ea
Customer Service Calls	39	ea
Customer Valves Installed	0	ea
New Services Installed	0	ea

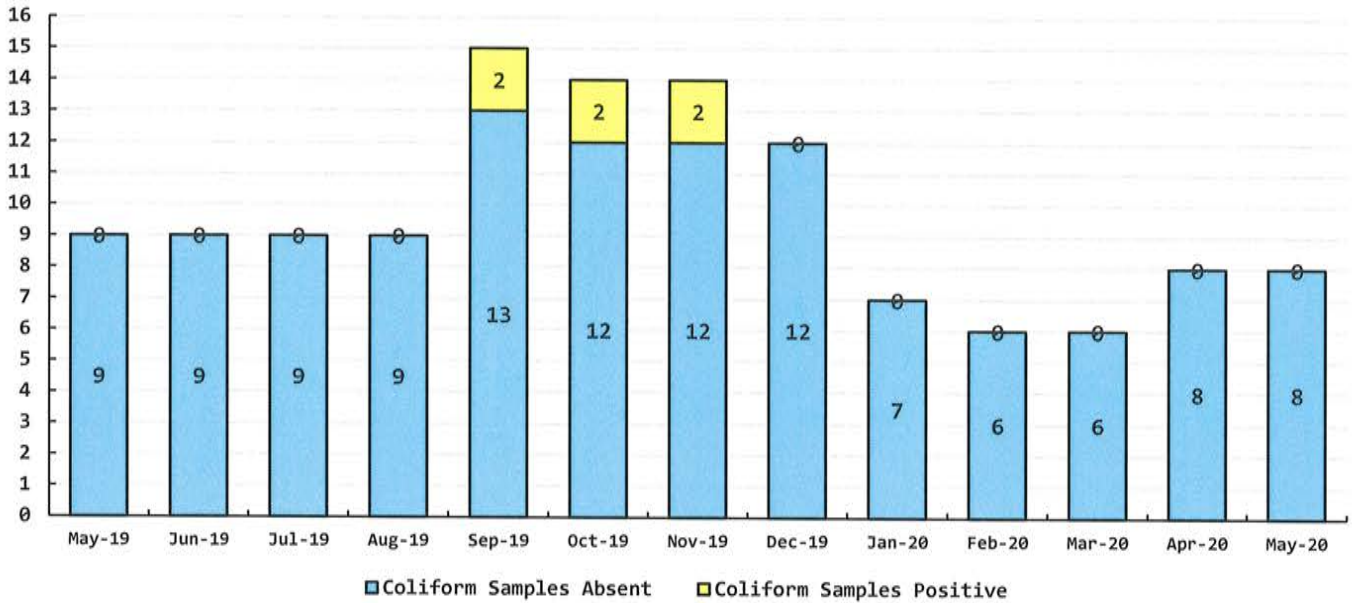
Data Period

Water Quality Data

May, 2020

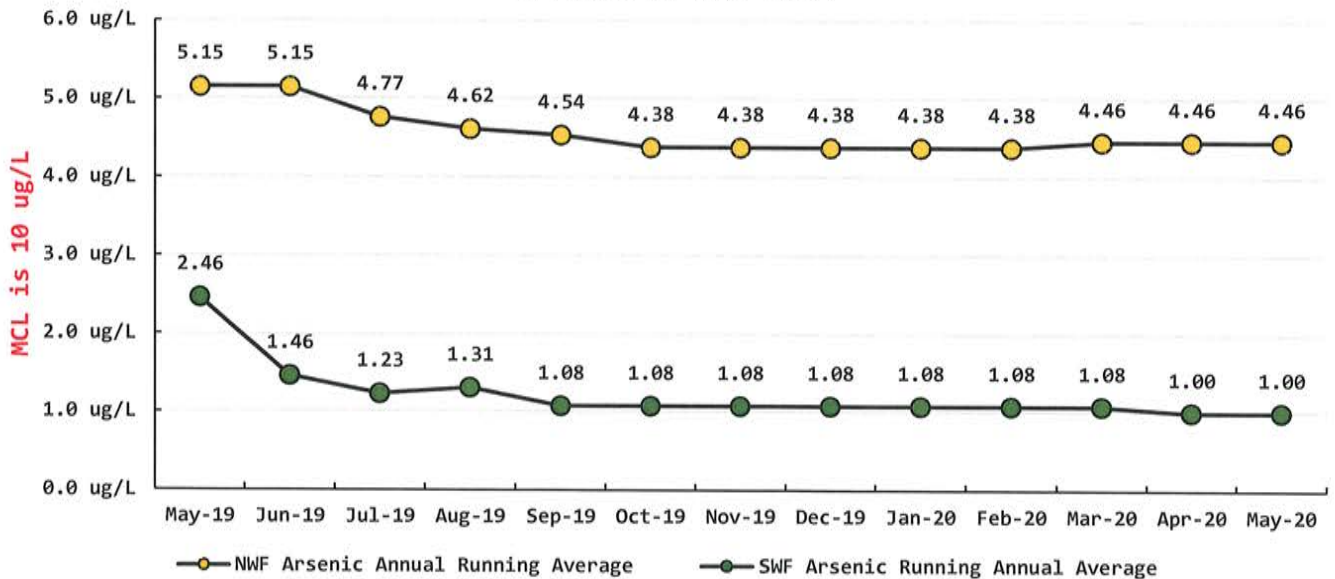
Coliform Samples Collected	8	ea
Coliform Samples Absent	8	ea
Coliform Samples Positive	0	ea
Coliform Sample Positive E. coli	0	ea
NWF Arsenic Annual Running Average	4.46	ug/L
SWF Arsenic Running Annual Average	1.00	ug/L

Coliform Bacteria Samples



Arsenic Monthly Annual Average

micrograms per liter (ug/L)



## May 2020 Managers Report

- Filter cleaning was done on the first 6 filter vessels & the 2 detention tanks. This consisted of removal of mud on the top layers of the filters. They each had a 1"-2" layer of mud. Lanced filter media with homemade wand. Then backwashed until they were clean.
- We let each filter vessel set for 3 days with a dosage of 2% Potassium Permanganate to recharge media. Then backwashed until clean and put back in service. So far, the Iron is about .15 ppm. This is down from .28 ppm consistently on finished water.
- 245<sup>th</sup> Project is complete.
  - The crew did a great job of swapping over 7 (2") feed lines from the 4". They each have a new 2" opt Nut Gate valve. Shut-offs in this area can be isolated by themselves rather than having to shut down a large area.
  - The 4" main that fed all these has been taken out off service. All lines have been placed on the GIS map.
- Completed hydrant flushing for the month. Next, we have backflow testing to complete and then we will begin work on Wiegardt's line extension on U St.