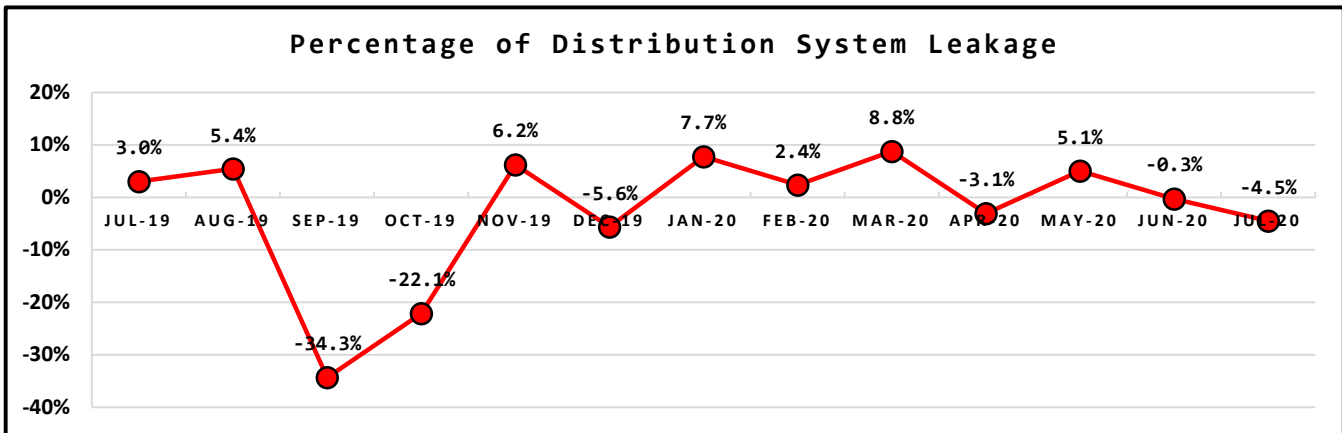
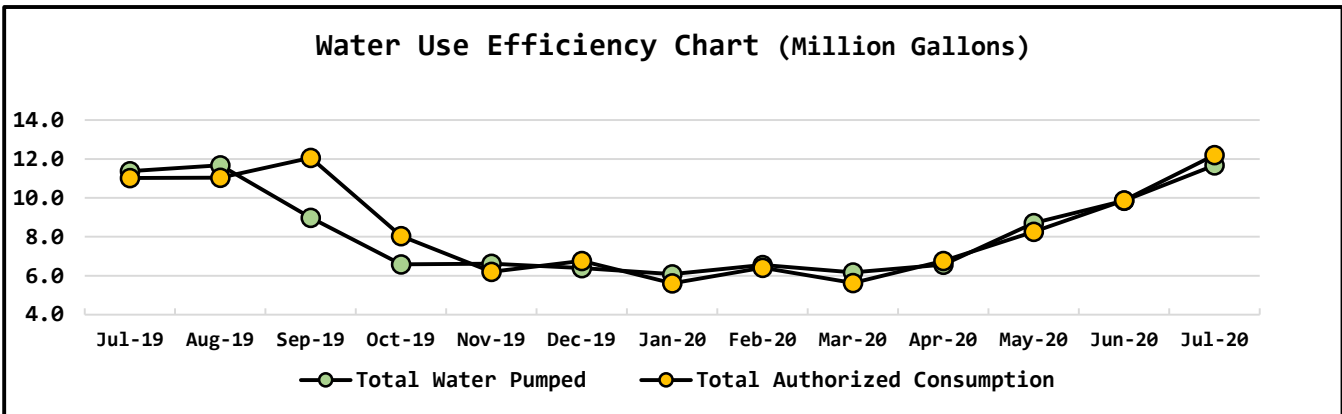


NORTH BEACH WATER DISTRICT GENERAL MANAGERS REPORT

FOR
August-2020

Metering Period	Water Production
July 1, 2020 to July 31, 2020	NWF Master Meter 6.3100 mg
	SWF Master Meter 5.3640 mg
	Total Water Pumped 11.6740 mg

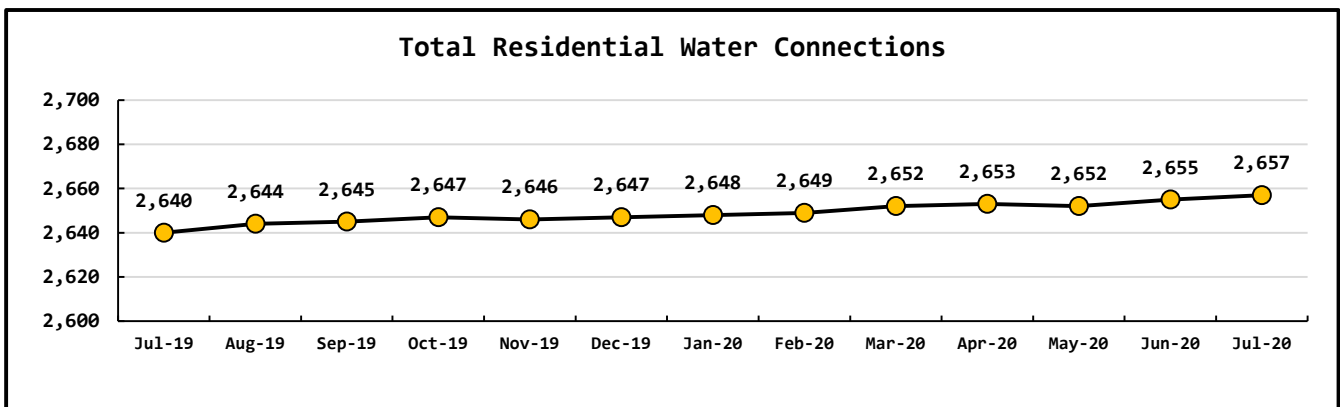
Metering Period	Water Consumption
July 1, 2020 to July 31, 2020	Total Water Sold 10.4858 mg
	NWF Backwash 0.2495 mg
	SWF Backwash 0.9650 mg
	Distribution Flushing 0.4987 mg
	Total Authorized Consumption 12.1990 mg
	Distribution Leakage -0.5250 mg
	Percent of DSL -4.5% %

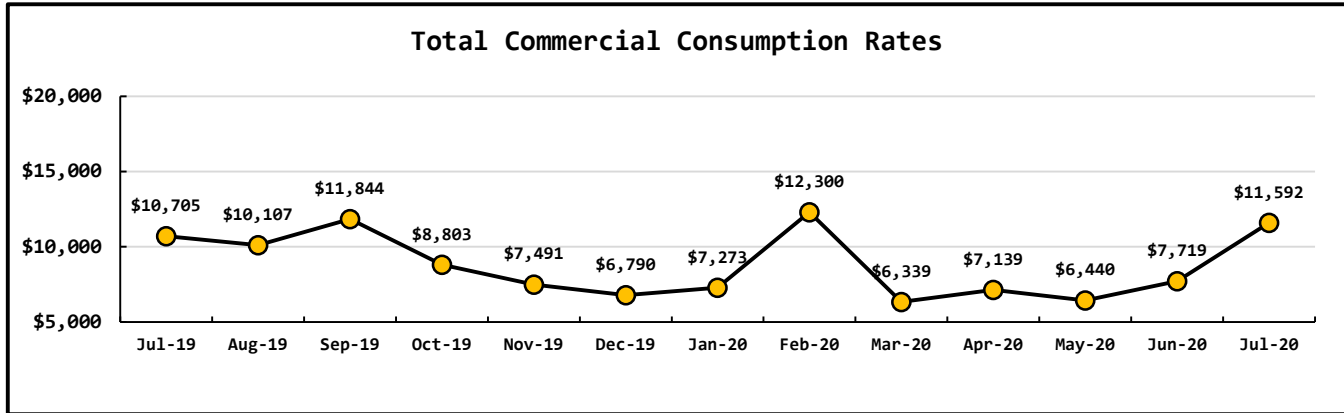
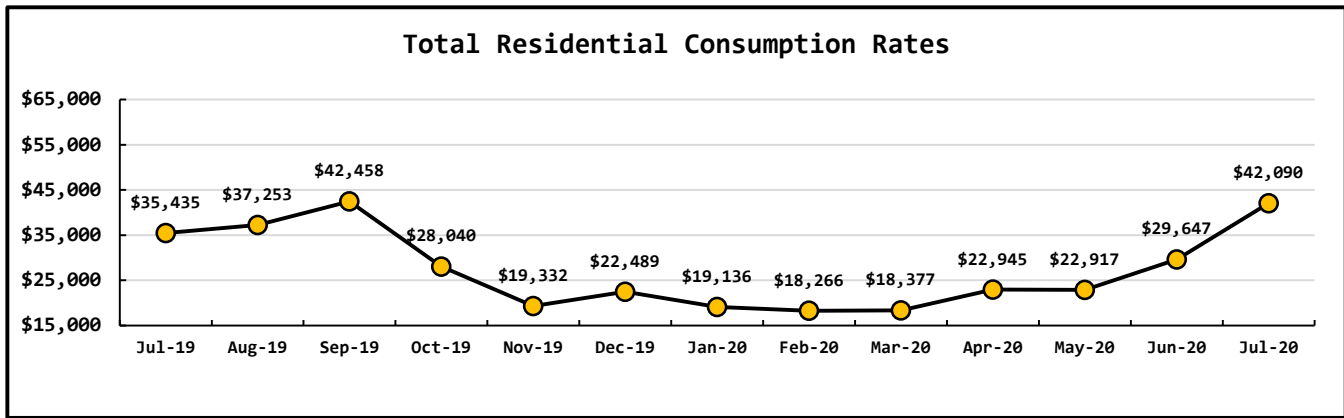
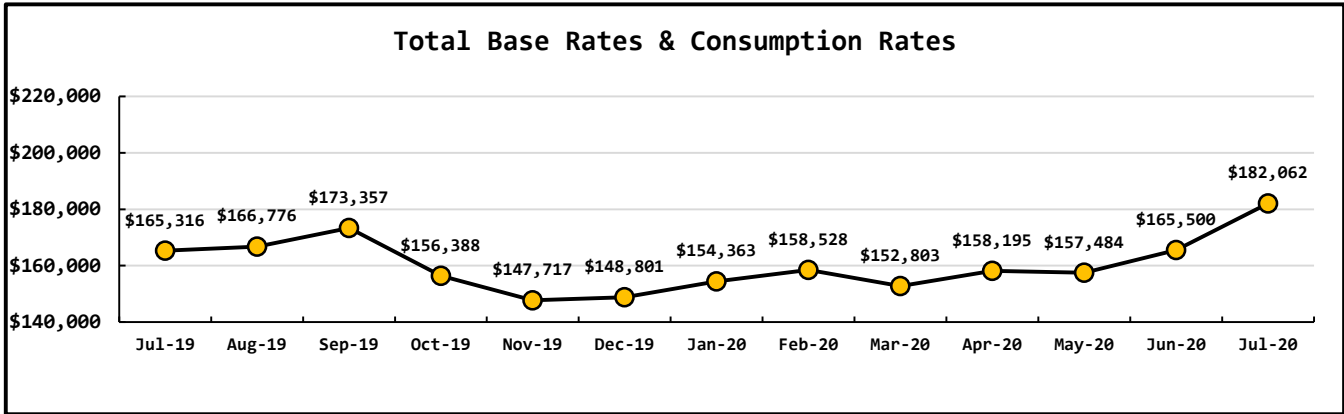


Data Period	Booster System Data		
July, 2020	North Wellfield Booster High	648	<i>gpm</i>
	North Wellfield Booster Low	0	<i>gpm</i>
	North Wellfield Booster Average	141	<i>gpm</i>
	South Wellfield Booster High	1,211	<i>gpm</i>
	South Wellfield Booster Low	0	<i>gpm</i>
	South Wellfield Booster Average	114	<i>gpm</i>
	North Wellfield Booster High	67	<i>psi</i>
	North Wellfield Booster Low	46	<i>psi</i>
	North Wellfield Booster Average	60	<i>psi</i>
	South Wellfield Booster High	69	<i>psi</i>
	South Wellfield Booster Low	42	<i>psi</i>
	South Wellfield Booster Average	61	<i>psi</i>

Data Period	Well Field Data		
July, 2020	North Wellfield Total	6.31	<i>mg</i>
	South Wellfield Total	5.364	<i>mg</i>

Data Period			Accounts Data		
July, 2020			Residential Base Rate	119,710	\$
			Residential Consumption	42,090	\$
			Commercial Base Rate	8,670	\$
Residential Accounts	2,657	<i>ea</i>	Commercial Consumption	11,592	\$
Commercial Accounts	100	<i>ea</i>	Fire Flow Rate	1,108	\$
Fire Flow Accounts	4	<i>ea</i>	Backflow Assembly Rates	287	\$
Backflow Accounts	37	<i>ea</i>	Ilwaco	417	\$
			Ilwaco Reimbursement	417	\$
			Other Fees & Charges	1,655	\$
			Total	185,946	\$





Data Period	Operations Data		
July, 2020	Past Due Accounts	268	ea
	Properties with Liens	26	ea
	Accounts Locked Off	0	ea
	Water Main Locates	48	ea
	Water Quality Complaints	0	ea
	Customer Service Calls	74	ea
	Customer Valves Installed	0	ea
	New Services Installed	6	ea

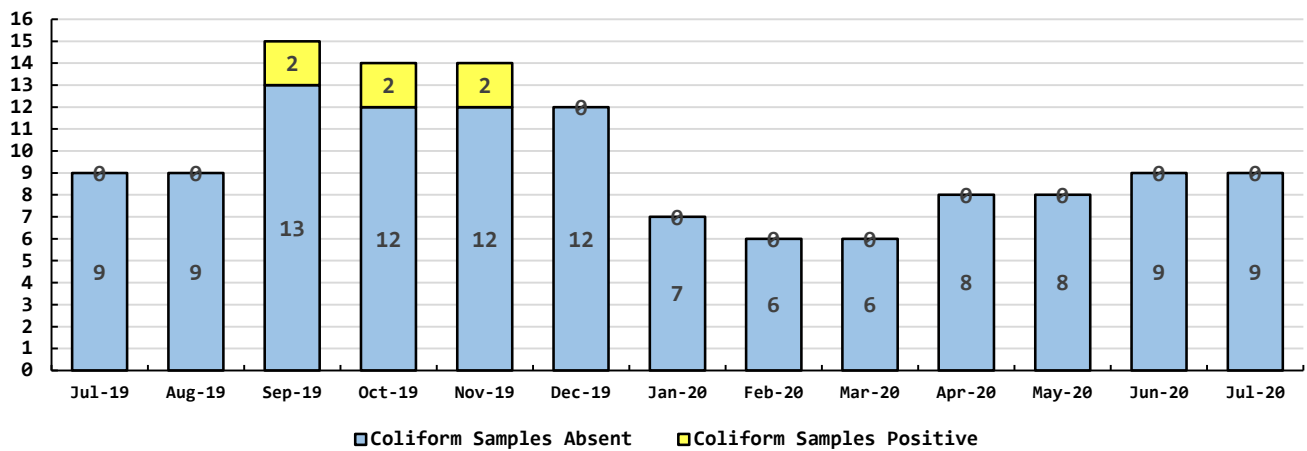
Data Period

Water Quality Data

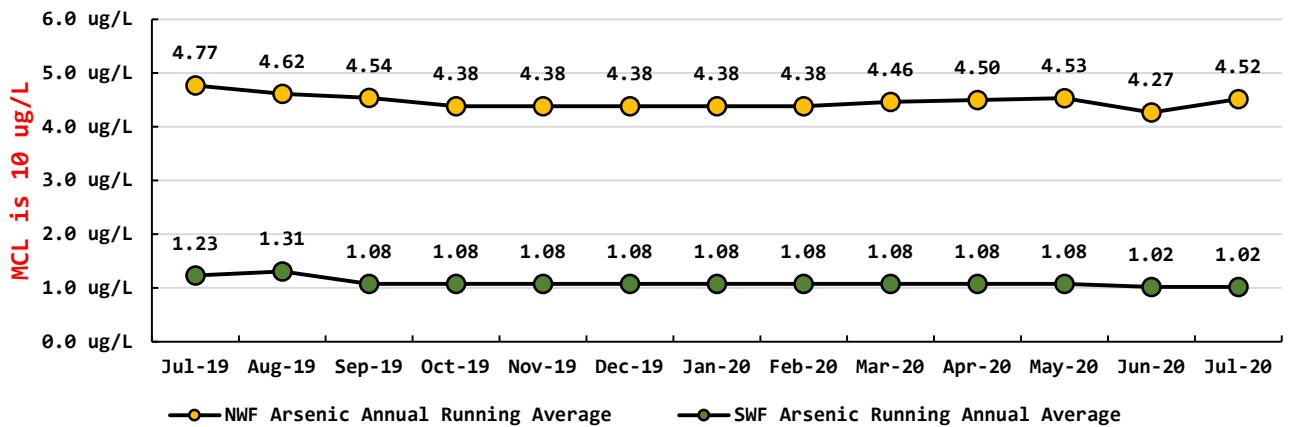
July, 2020

Coliform Samples Collected	9	<i>ea</i>
Coliform Samples Absent	9	<i>ea</i>
Coliform Samples Positive	0	<i>ea</i>
Coliform Sample Positive E. coli	0	<i>ea</i>
NWF Arsenic Annual Running Average	4.52	<i>ug/L</i>
SWF Arsenic Running Annual Average	1.02	<i>ug/L</i>

Coliform Bacteria Samples



Arsenic Monthly Annual Average
micrograms per liter (ug/L)



July 2020 Managers Report:

- Attached to this report is a work orders report for July.
- Lead & Copper testing was taken
- 20 samples from various homes were sent in to test the lead & copper residuals. Based on the 90th percentile. Please see attached. At the 90th percentile the results were, Lead = 0.007 with an action level at 0.015 mg/l & Copper = 0.459 mg/l with an action level at 1.3 mg/l. These look really good.
- We are about halfway complete with the U Street project. We had General Boring do 2 crossings so we can get the services across the road.
- G&O has done the chlorination report and I am waiting for the final draft and will let you know when it is done.
- Called a tech in to look at our Booster pump station. Derek Zock (Evergreen Rural Water) who used to work with these components stopped by and looked at our station. Awaiting his report.
- Called and talked with Core & Main about our meter reading system and talked about the backflow alarms.
- All Reservoirs have been cleaned by H2O Solutions. We have the videos of these tasks in each tank.
- We installed a 12" valve on the suction side of the booster station so it can be shut down for maintenance tasks. This was done with a ¼ full flow. Valves at tanks are not working.
- The Mower was sent in again to be fixed. A continuation of the first problem.
- Looking at putting in another 6 services in the weeks to follow and finishing the U Street project.
- TAG put in alarm system, so they are active on both the SWF & the NWF and we are trending flows and pressures 24 hours a day 7 days a week.

Lead action Level = .015 mg/l

NBWD result = 0.007 mg/l

Copper action Level = 1.3 mg/l

NBWD result = 0.459 mg/l

Lead Results:			Copper Results:	
Address	Result:		Address	Result:
1301 194th	0.001	1	1808 198th	0.019
1706 194th	0.001	2	1501 201st	0.025
1331 196th	0.001	3	2000 201st	0.029
1501 201st	0.001	4	1511 229th	0.036
2000 201st	0.001	5	1331 196th	0.040
20610 Crane	0.001	6	20718 Crane	0.048
1511 229th	0.001	7	20610 Crane	0.053
1515 229th	0.001	8	3008 270th	0.099
1522 229th	0.001	9	1807 195th	0.134
2406 Bay	0.001	10	1522 229th	0.164
1808 198th	0.002	11	1212 196th	0.221
1809 229th	0.002	12	1504 196th	0.250
20718 Crane	0.003	13	2516 227th	0.264
3008 270th	0.003	14	1414 194th	0.281
1504 196th	0.005	15	1528 229th	0.292
1414 194th	0.006	16	1515 229th	0.307
1212 196th	0.006	17	1809 229th	0.434
1807 195th	0.007	18	1301 194th	0.459
1528 229th	0.007	19	1706 194th	0.486
2516 227th	0.015	20	2406 Bay	0.708

Samples Taken:

$$20 \times 0.9 = 18$$

What this determines is the Number to be chosen as the 90th Percentile.
In this case.

The 18th highest value is the number taken as the results for the District.

July Work Orders

Read/Leave On	14
Turn Off/Lock – Customer Request	5
Turn Off/Lock – Non-Payment	0
Interrogate Meter	23
Locate	48
Unlock/Turn On	10
Test Backflow	12
Miscellaneous	2
Replace Meter Box	0
Low Pressure	1
Check Customer Valves	1
Dirty Water Complaints	0
Replace Meter	0
Install New Service	6
Assist Customer	0
Check For Leak	6
Re-Read Meter	0
Install Customer Control Valve	0
Total	128