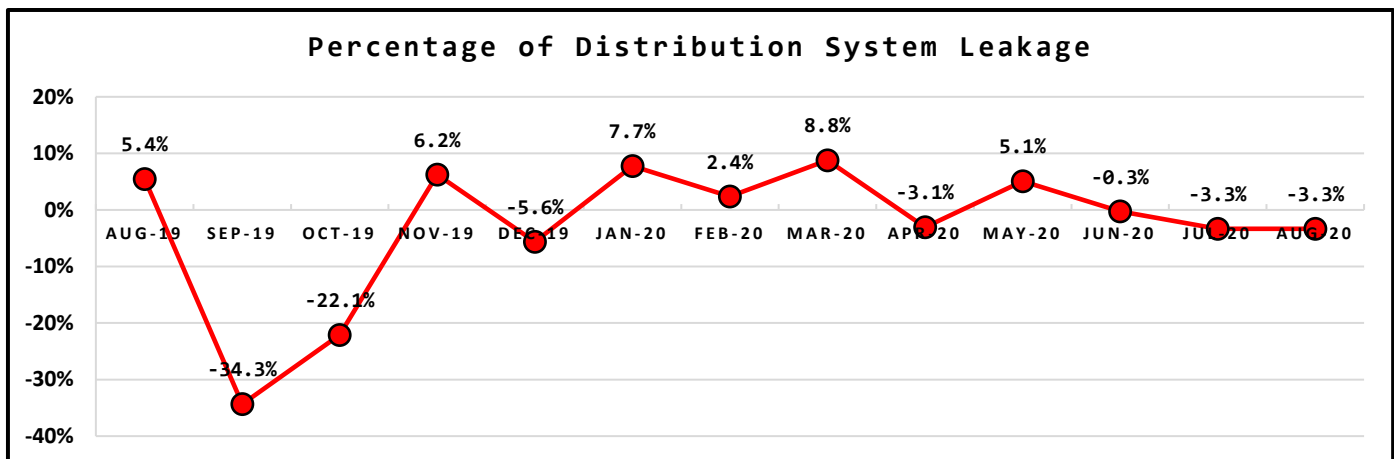
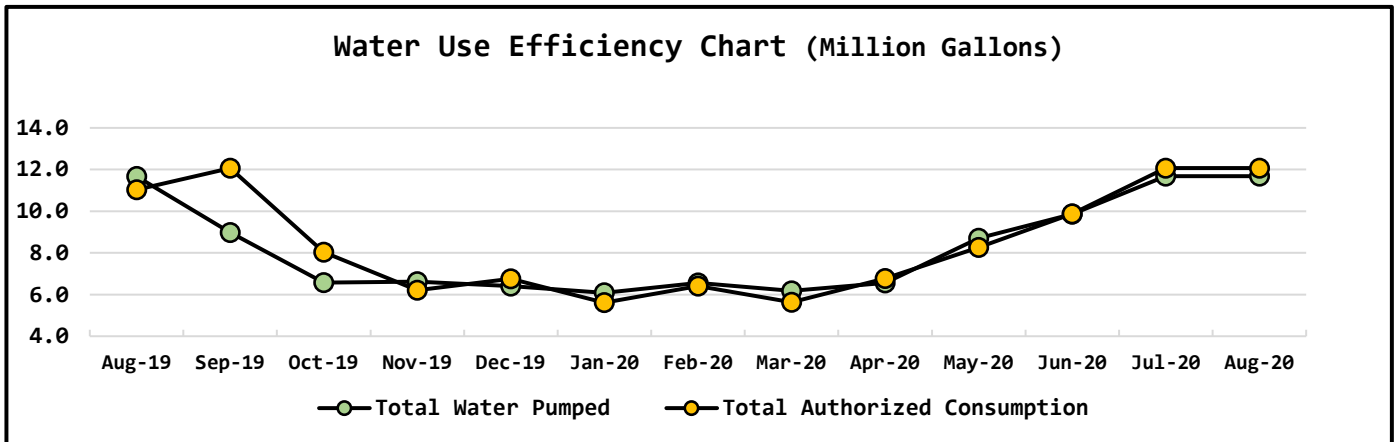


NORTH BEACH WATER DISTRICT GENERAL MANAGERS REPORT

FOR
September-2020

Metering Period	Water Production
August 1, 2020 to August 31, 2020	NWF Master Meter <u>6.3186</u> mg
	SWF Master Meter <u>5.3640</u> mg
	Total Water Pumped <u>11.6826</u> mg

Metering Period	Water Consumption
August 1, 2020 to August 31, 2020	Total Water Sold <u>10.4858</u> mg
	NWF Backwash <u>0.2495</u> mg
	SWF Backwash <u>0.9650</u> mg
	Distribution Flushing <u>0.3720</u> mg
	Total Authorized Consumption <u>12.0723</u> mg
	Distribution Leakage <u>-0.3897</u> mg
	Percent of DSL <u>-3.3%</u> %

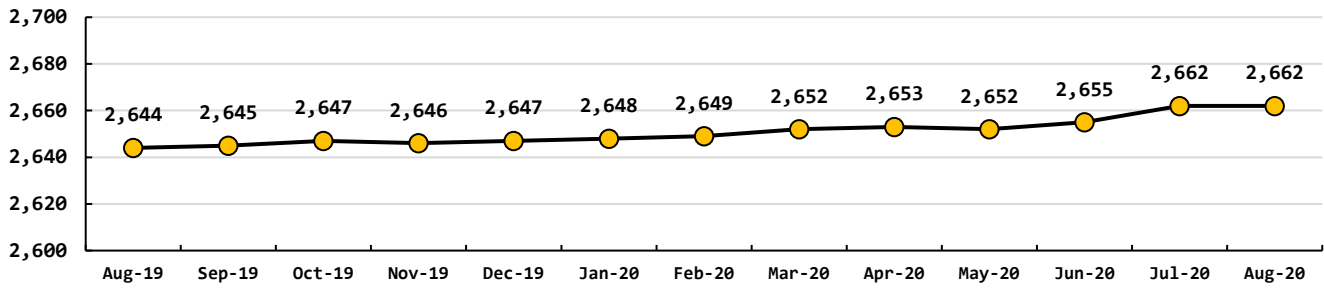


Data Period		Booster System Data		
August, 2020		North Wellfield Booster High	648	<i>gpm</i>
		North Wellfield Booster Low	0	<i>gpm</i>
		North Wellfield Booster Average	141	<i>gpm</i>
		South Wellfield Booster High	1211	<i>gpm</i>
		South Wellfield Booster Low	48	<i>gpm</i>
		South Wellfield Booster Average	114	<i>gpm</i>
		North Wellfield Booster High	67	<i>psi</i>
		North Wellfield Booster Low	46	<i>psi</i>
		North Wellfield Booster Average	60	<i>psi</i>
		South Wellfield Booster High	69	<i>psi</i>
		South Wellfield Booster Low	42	<i>psi</i>
		South Wellfield Booster Average	61	<i>psi</i>

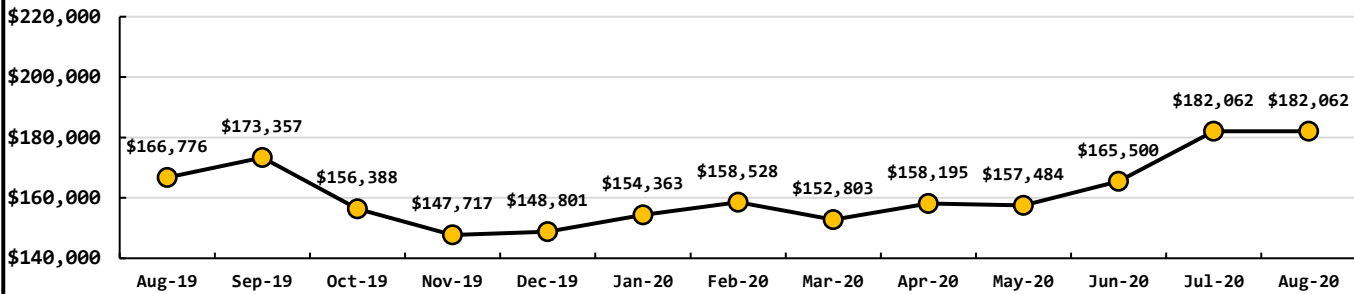
Data Period		Well Field Data		
August, 2020		North Wellfield Total	6.5165	<i>mg</i>
		South Wellfield Total	6.1276	<i>mg</i>

Data Period		Accounts Data			
August, 2020		Residential Base Rate	119,710	<i>\$</i>	
		Residential Consumption	42,090	<i>\$</i>	
		Commercial Base Rate	8,670	<i>\$</i>	
Residential Accounts	<u>2,662</u>	<i>ea</i>	Commercial Consumption	11,592	<i>\$</i>
Commercial Accounts	<u>100</u>	<i>ea</i>	Fire Flow Rate	1,108	<i>\$</i>
Fire Flow Accounts	<u>4</u>	<i>ea</i>	Backflow Assembly Rates	287	<i>\$</i>
Backflow Accounts	<u>33</u>	<i>ea</i>	Ilwaco	7,047	<i>\$</i>
			Ilwaco Reimbursement	0	<i>\$</i>
			Other Fees & Charges	1,513	<i>\$</i>
			Total	192,017	<i>\$</i>

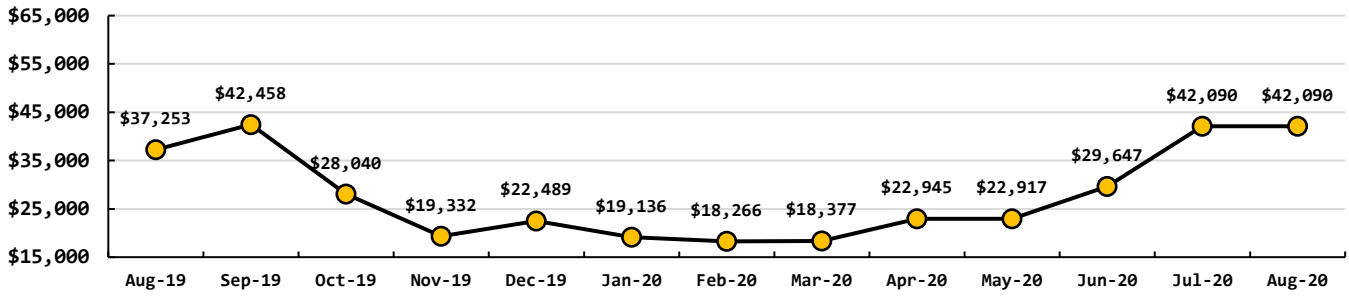
Total Residential Water Connections



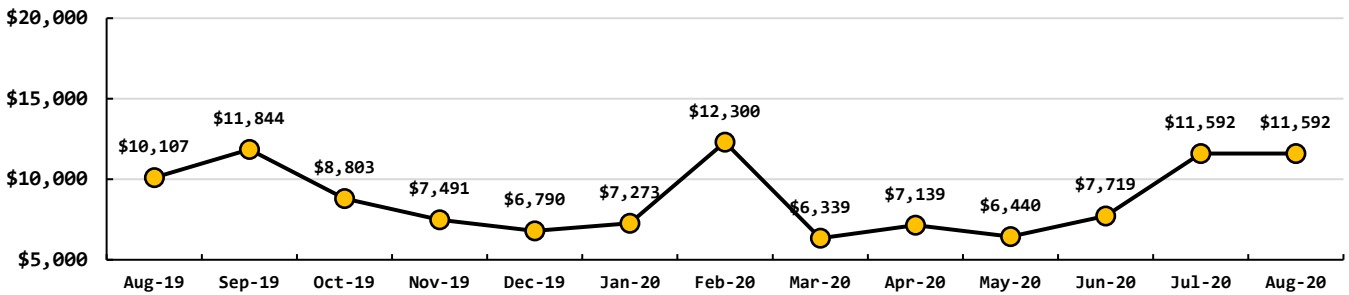
Total Base Rates & Consumption Rates



Total Residential Consumption Rates



Total Commercial Consumption Rates



Data Period

August, 2020

Operations Data

Past Due Accounts	250	<i>ea</i>
Properties with Liens	24	<i>ea</i>
Accounts Locked Off	0	<i>ea</i>
Water Main Locates	78	<i>ea</i>
Water Quality Complaints	0	<i>ea</i>
Customer Service Calls	62	<i>ea</i>
Customer Valves Installed	3	<i>ea</i>
New Services Installed	3	<i>ea</i>

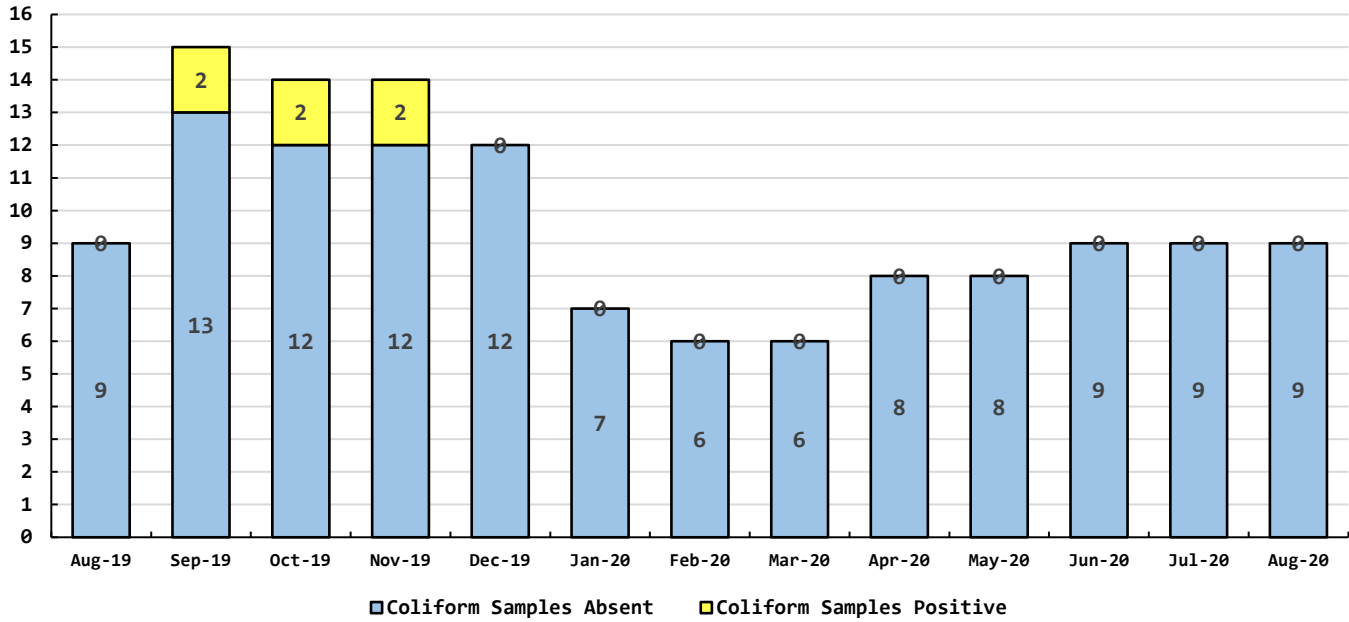
Data Period

August, 2020

Water Quality Data

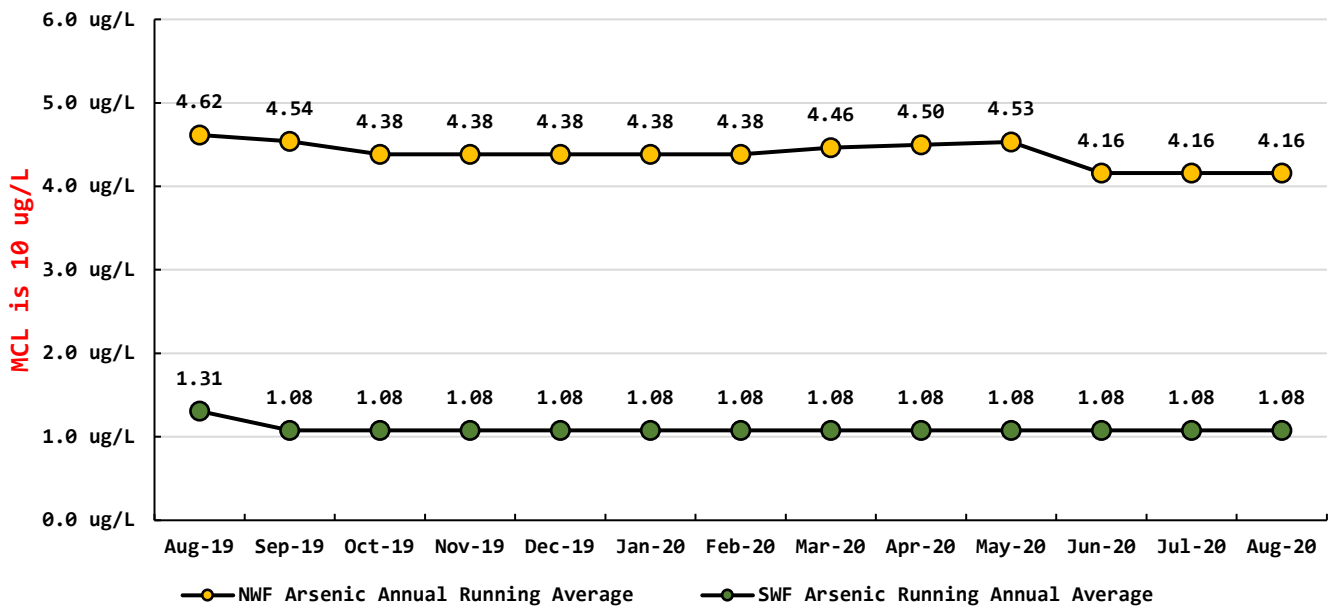
Coliform Samples Collected	9	<i>ea</i>
Coliform Samples Absent	9	<i>ea</i>
Coliform Samples Positive	0	<i>ea</i>
Coliform Sample Positive E. coli	0	<i>ea</i>
NWF Arsenic Annual Running Average	4.16	<i>ug/L</i>
SWF Arsenic Running Annual Average	1.08	<i>ug/L</i>

Coliform Bacteria Samples



Arsenic Monthly Annual Average

micrograms per liter (ug/L)



August 2020 Managers Report:

- **NWF Booster Pump Station (BPS)**

- Rebuilt both 25hp pumps. Perfect timing to train crew on pumps and how to repair them. We took the pumps apart to inspect, cleaned and put them back together.
- Reason why is that I was concerned that these impellers were pitted from air just as the smaller impeller had been.
- They were pretty damaged within the veins and the wear rings were worn in an oblong fashion.
- If you are interested in seeing how this occurs copy the link below for a YouTube video explaining it:
 - ***Cavitation in a Water Pump and Valve - Excellent Visual and Audible Demonstration.***

- **U Street Project Progress**

- Bores have been completed under the road where services can be connected. Should have this finished by the end of the month.

- **256th Street Project**

- Lindstrom & Sons Construction is doing the work for the County.
- We have installed 3 new valves on the mainlines at Ridge and R Street. Would have been quite a bit simpler had the valves been working. The valves have been replaced so that we can isolate that area moving forward.
- For the culvert to be dug up and re-laid we had to cut three mains, remove one sample site and one hydrant had to be moved out of the way so the trench box could be installed.
- County paid for the couplings and pipe to be reinstalled.

- **Part Street Leak**

- The location was dug up expecting it to be a service line. This was not the case. There was an old "T" that was failing so we filled it back in as we did not have the parts in inventory to complete the repair. The parts were picked up Friday and will be completed on Monday.

- **The crew had numerous locates for the highway project.**

- **Installed 3 new services.**

August Work Orders

Read/Leave On	13
Turn Off/Lock – Customer Request	8
Turn Off/Lock – Non-Payment	0
Interrogate Meter	10
Locate	78
Unlock/Turn On	10
Test Backflow	6
Miscellaneous	4
Replace Meter Box	3
Low Pressure	2
Check Customer Valves	0
Dirty Water Complaints	0
Replace Meter	4
Install New Service	3
Assist Customer	1
Check For Leak	3
Re-Read Meter	2
Install Customer Control Valve	3
Total	150