

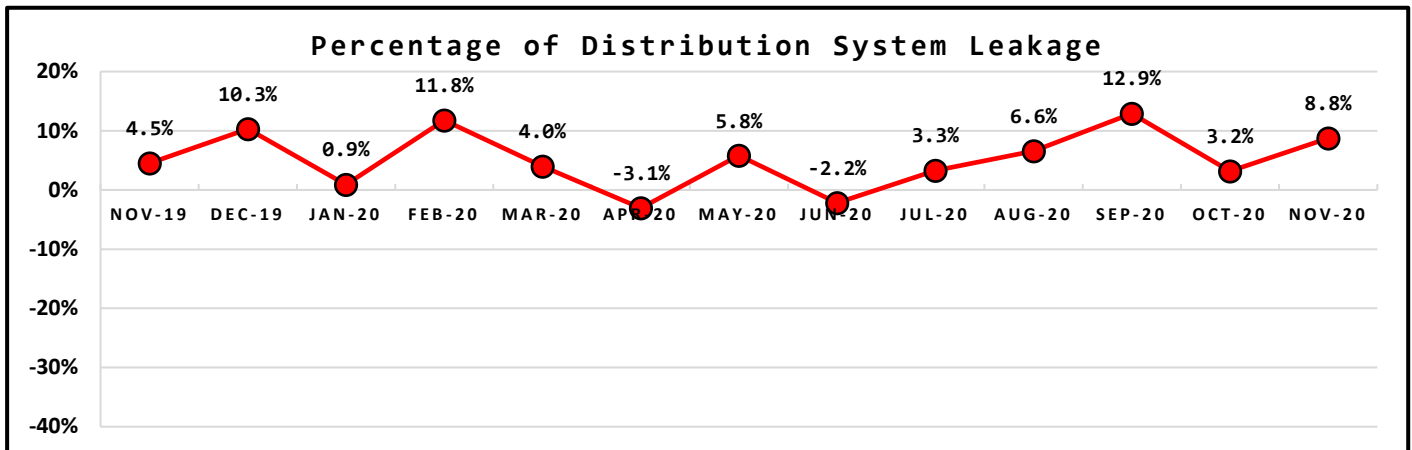
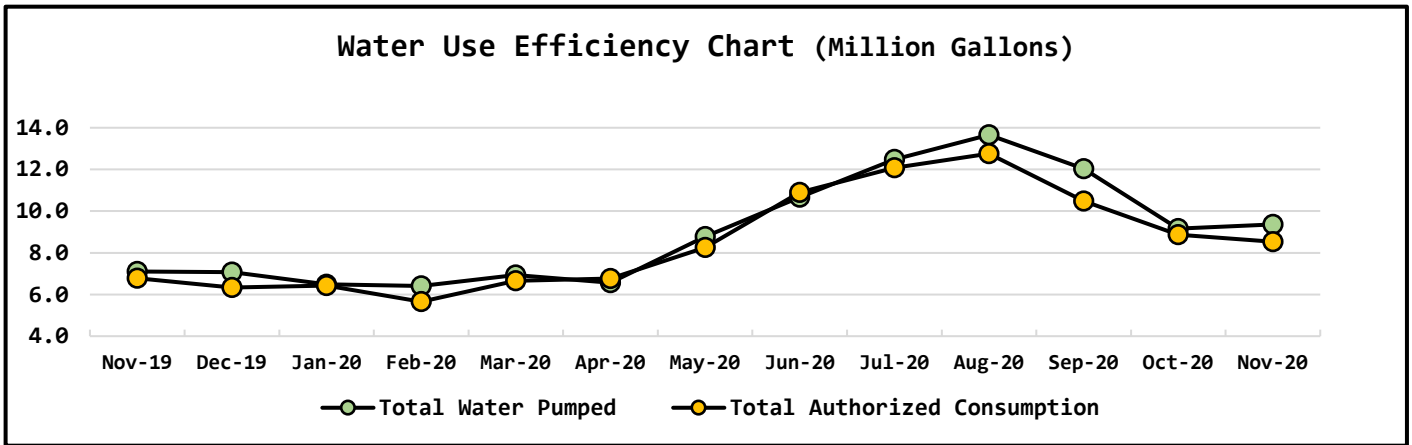
NORTH BEACH WATER DISTRICT GENERAL MANAGERS REPORT

FOR

January-2021

Metering Period	Water Production
December 1, 2020 to December 31, 2020	NWF Master Meter 3.9585 mg
	SWF Master Meter 5.3981 mg
	Total Water Pumped 9.3566 mg

Metering Period	Water Consumption
December 1, 2020 to December 31, 2020	Total Water Sold 6.1215 mg
	NWF Backwash 0.1582 mg
	SWF Backwash 1.3184 mg
	Distribution Flushing, Fire Dept & Water use at NWF & SWF 0.9394 mg
	Total Authorized Consumption 8.5375 mg
	Distribution Leakage 0.8191 mg
	Percent of DSL 8.8% %

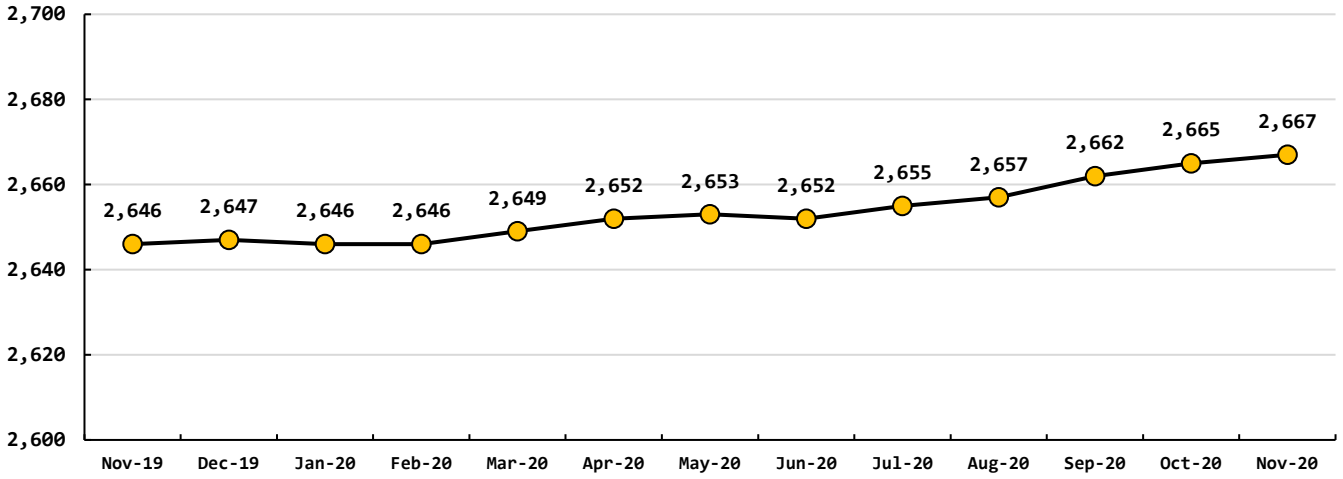


Data Period	Booster System Data		
December, 2020	North Wellfield Booster High	725	gpm
	North Wellfield Booster Low	0	gpm
	North Wellfield Booster Average	77	gpm
	Total MG pumped to Distribution at NWF	3.9585	MG/M
	South Wellfield Booster High	1357	gpm
	South Wellfield Booster Low	0	gpm
	South Wellfield Booster Average	108	gpm
	Total MG pumped to Distribution at SWF	5.3981	MG/M
	Total Pumped to Distribution	9.3566	MG/M
	North Wellfield High	67	psi
	North Wellfield Low	0	psi
	North Wellfield Average	60	psi
	South Wellfield Booster High	68	psi
	South Wellfield Booster Low	41	psi
	South Wellfield Booster Average	61	psi
	Distribution Pressure Readings per Month	3,353	
	Highest	69	psi
	Lowest	42	psi
	Average	62	psi

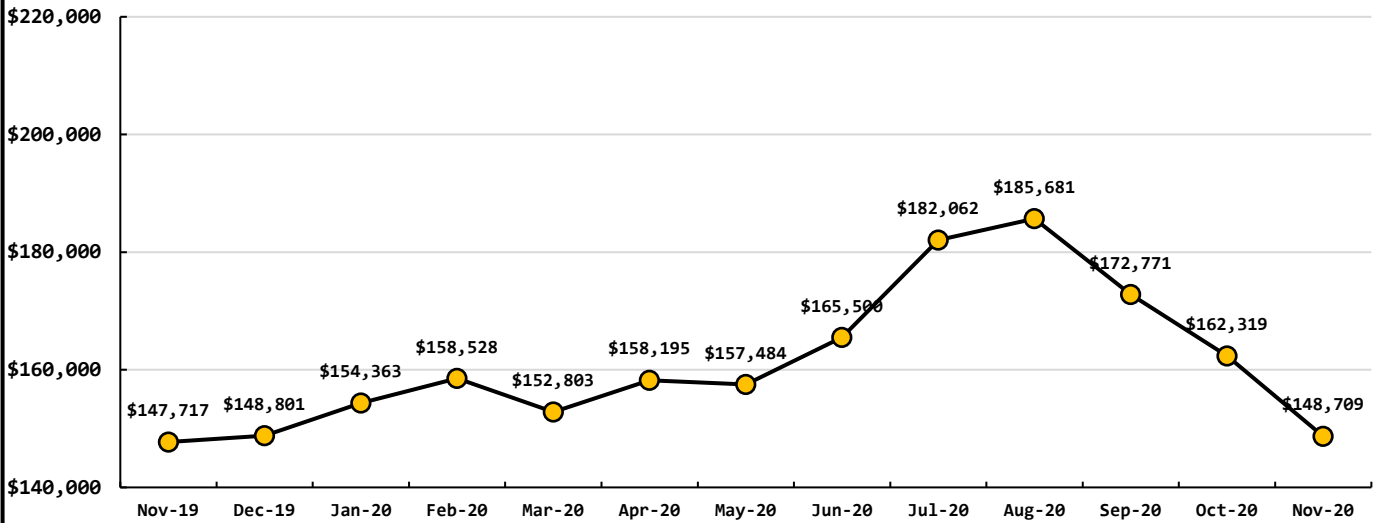
Data Period	Well Field Data		
December, 2020	North Wellfield Total	3.9585	
	South Wellfield Total	5.3980	mg
	Total Production	9.3565	mg

Data Period	Accounts Data		
December, 2020	Residential Base Rate	111,388	\$
	Residential Consumption	19,582	\$
	Commercial Base Rate	8,134	\$
	Commercial Consumption	9,605	\$
Residential Accounts <u>2,669</u> ea	Fire Flow Rate	1,108	\$
Commercial Accounts <u>100</u> ea	Backflow Assembly Rate	301	\$
Fire Flow Accounts <u>4</u> ea	Ilwaco Contract	0	\$
Backflow Accounts <u>32</u> ea	Ilwaco Reimbursement	0	\$
	Other Fees & Charges	548	\$
	Total	150,980	\$

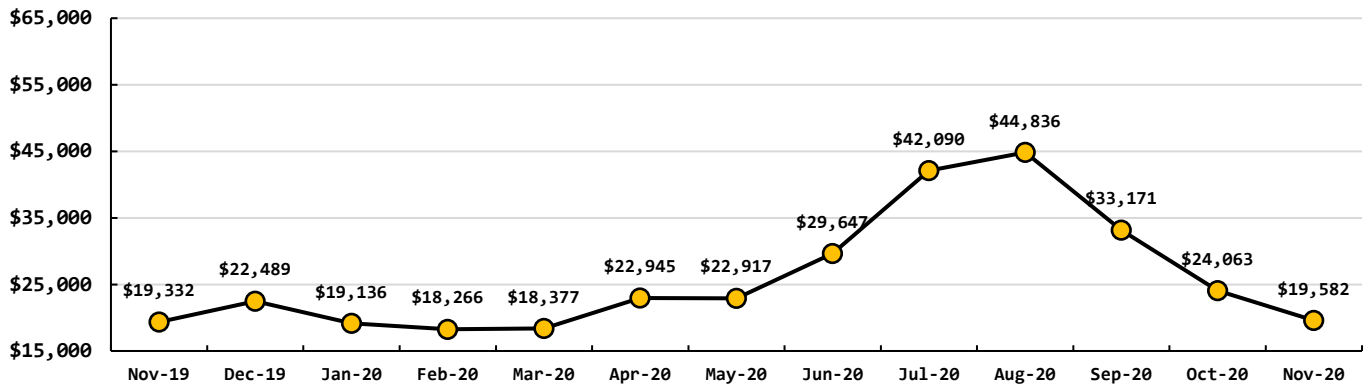
Total Residential Water Connections



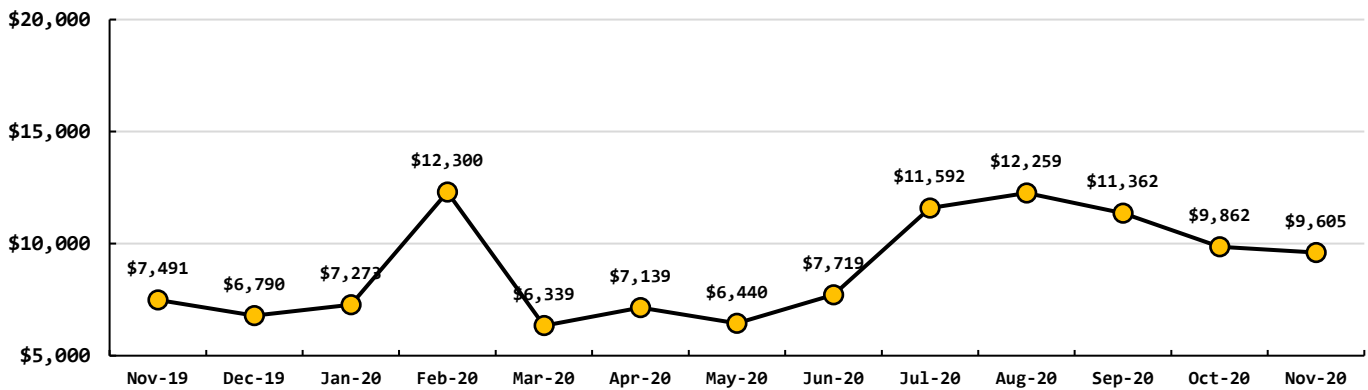
Total Base Rates & Consumption Rates



Total Residential Consumption Rates



Total Commercial Consumption Rates



Data Period

December, 2020

Operations Data

Past Due Accounts	301	<i>ea</i>
Properties with Liens	23	<i>ea</i>
Accounts Locked Off	0	<i>ea</i>
Water Main Locates	32	<i>ea</i>
Water Quality Complaints	0	<i>ea</i>
Customer Service Calls	41	<i>ea</i>
Customer Valves Installed	1	<i>ea</i>
New Services Installed	2	<i>ea</i>

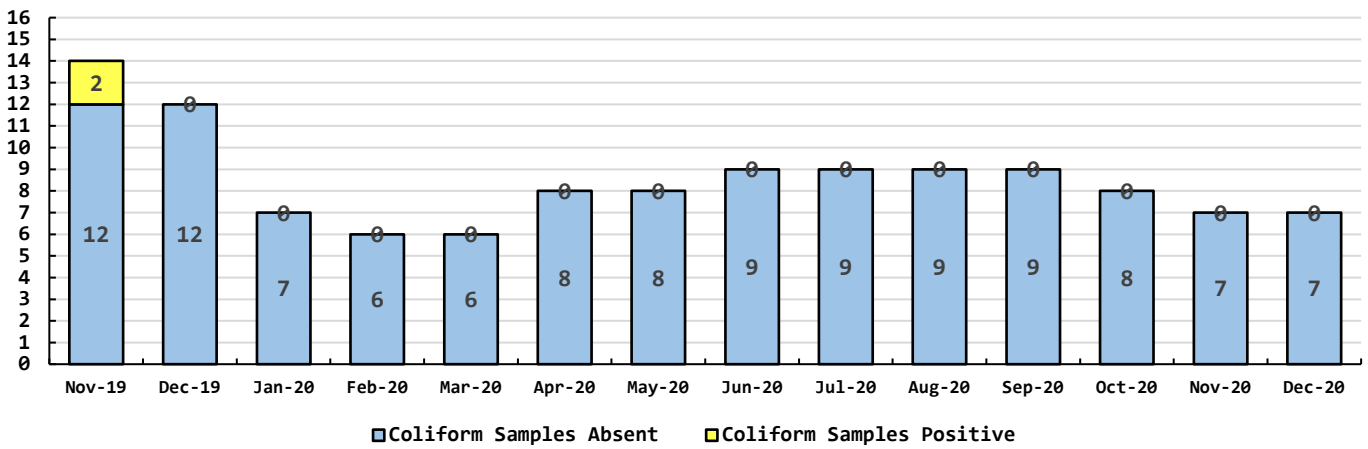
Data Period

Water Quality Data

December, 2020

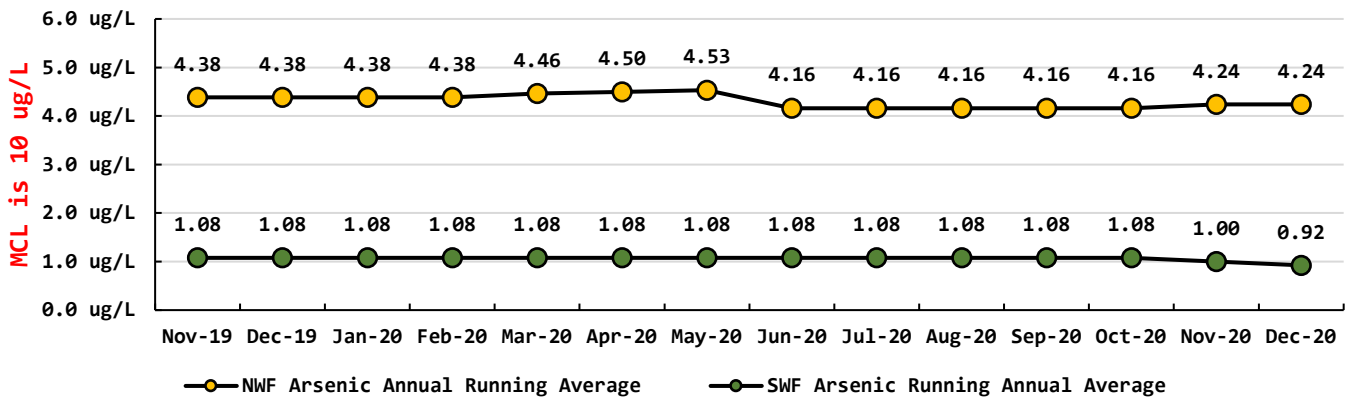
Coliform Samples Collected	7	ea
Coliform Samples Absent	7	ea
Coliform Samples Postive	0	ea
Coliform Sample Positive E.coli	0	ea
NWF Arsenic	4	ug/L
SWF Arsenic	0	ug/L
NWF Arsenic Annual Running Average	4	ug/L
SWF Arsenic Running Annual Average	1	ug/L

Coliform Bacteria Samples



Arsenic Monthly Annual Average

micrograms per liter (ug/L)



January 2021 Managers Report:

Evaluations:

- Completed

GIS:

- On going, found several mains and valves that were not on the map and have now been added.

Services:

- Have 10 services:
- December installed 2 services.
- 4 on hold, 2 owners have not picked up blue stake yet, 4 ready to go.

Treatment Plant Operations:

- All secondary MCL's are being meet.

Shop Organization:

- Straightened out hold shop. Have Ford Electric scheduled to fix welding outlet that let out a big flash.

Crew:

- Service installations, working on digging up valve cans and placing concrete around them. Need to be able find them!

Maintenance Items:

- All vehicles have been serviced, oil changed, tires on 1 truck, 1 front end alignment and ball joints replaced. Tires have been rotated.

Parts Ordered:

- Meter reading equipment has been ordered thru Core & Main.
- NWF head replacements have been ordered and on their way.
- NWF pilot study is very close to start, everything has been built and awaiting a few small parts.
- All flow meters have been calibrated by Measure Tech at the North Wellfield as well as the South Wellfield. No problems this time around.

December Work Orders

Read/Leave On	3
Turn Off/Lock – Customer Request	4
Turn Off/Lock – Non-Payment	0
Interrogate Meter	9
Locates	32
Unlock/Turn On	3
Test Backflow	3
Miscellaneous	6
Replace Meter Box	0
Low Pressure	1
Check Customer Valves	0
Dirty Water Complaints	0
Replace Meter	1
Install New Service	2
Assist Customer	2
Check For Leak	5
Re-Read Meter	2
Install Customer Control Valve	1
Total	74