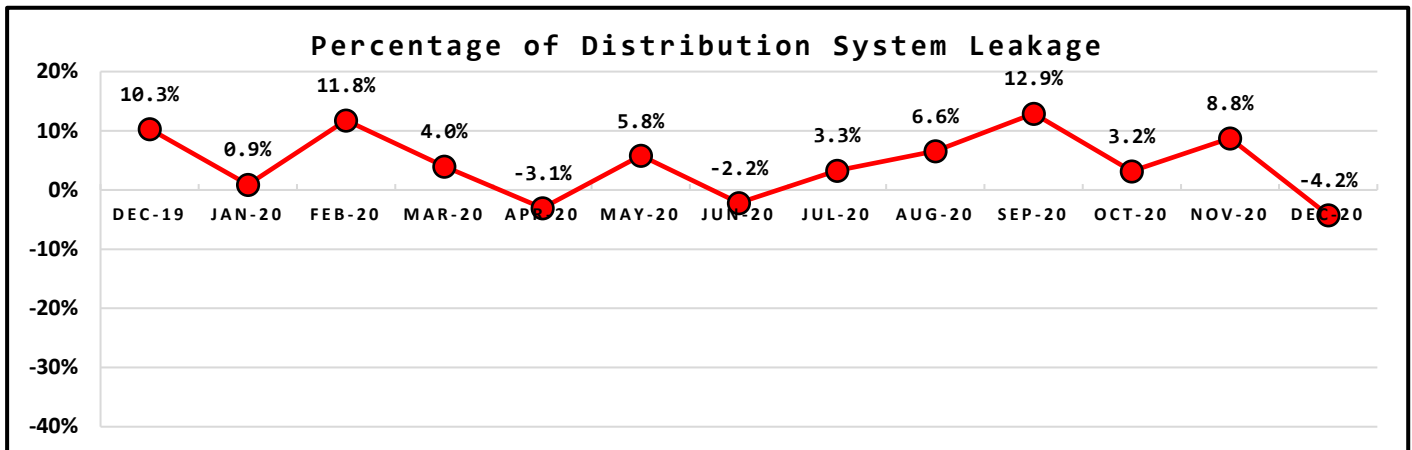
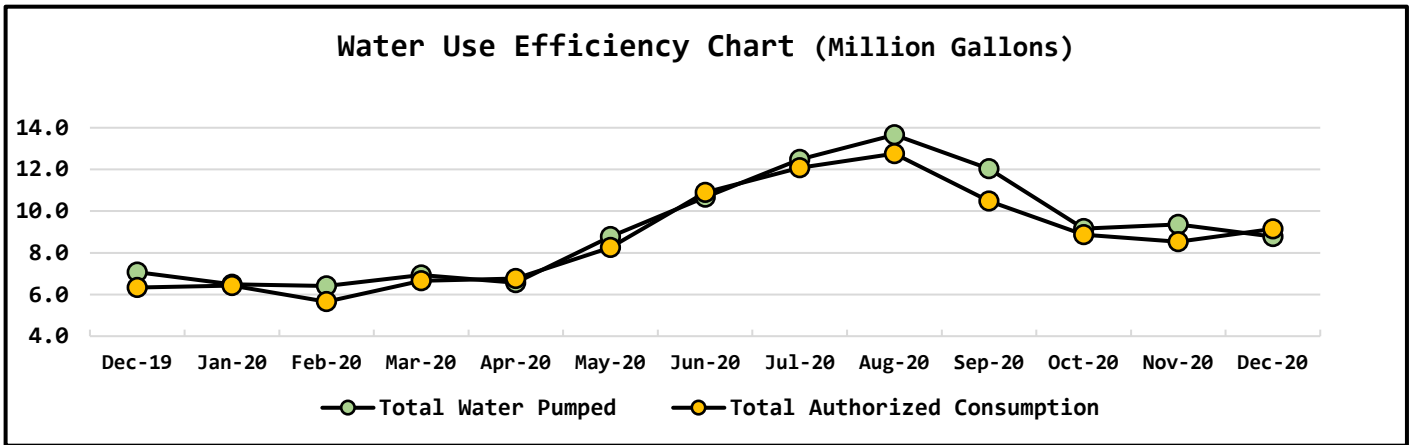


NORTH BEACH WATER DISTRICT GENERAL MANAGERS REPORT

FOR
February-2021

Metering Period	Water Production
January 1, 2021 to January 31, 2021	NWF Master Meter <u>3.8468</u> mg
	SWF Master Meter <u>4.9320</u> mg
	Total Water Pumped <u>8.7788</u> mg

Metering Period	Water Consumption
January 1, 2021 to January 31, 2021	Total Water Sold <u>7.6005</u> mg
	NWF Backwash <u>0.1521</u> mg
	SWF Backwash <u>1.0372</u> mg
	Distribution Flushing, Fire Dept & Water use at NWF & SWF <u>0.3608</u> mg
	Total Authorized Consumption <u>9.1506</u> mg
	Distribution Leakage <u>-0.3718</u> mg
	Percent of DSL <u>-4.2%</u> %

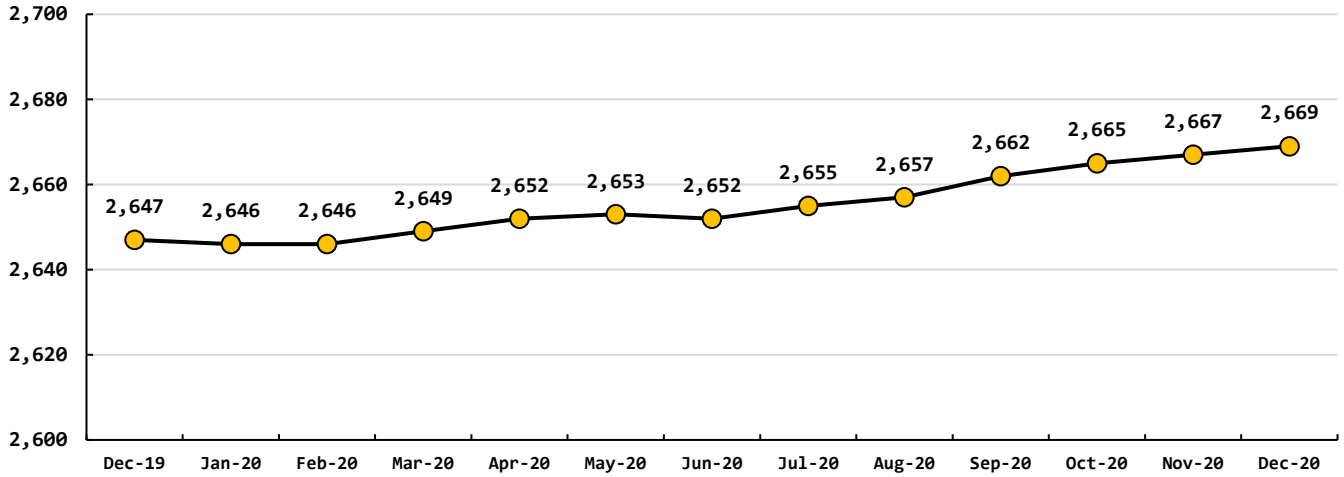


Data Period	Booster System Data		
January, 2021	North Wellfield Booster High gpm	739	<i>gpm</i>
	North Wellfield Booster Low gpm	0	<i>gpm</i>
	North Wellfield Booster Average gpm	75	<i>gpm</i>
	Total MG pumped to Distribution at NWF	3.9585	<i>MG/M</i>
	South Wellfield Booster High gpm	1547	<i>gpm</i>
	South Wellfield Booster Low gpm	0	<i>gpm</i>
	South Wellfield Booster Average gpm	95	<i>gpm</i>
	Total MG pumped to Distribution at SWF	5.3981	<i>MG/M</i>
	Total Pumped to Distribution	9.3566	<i>MG/M</i>
	North Wellfield High	66	<i>psi</i>
	North Wellfield Low	39	<i>psi</i>
	North Wellfield Average	60	<i>psi</i>
	South Wellfield Booster High	68	<i>psi</i>
	South Wellfield Booster Low	41	<i>psi</i>
	South Wellfield Booster Average	61	<i>psi</i>
	Distribution Pressure Readings per Month	3,513	
	Highest	69	<i>psi</i>
	Lowest	35	<i>psi</i>
	Average	61	<i>psi</i>

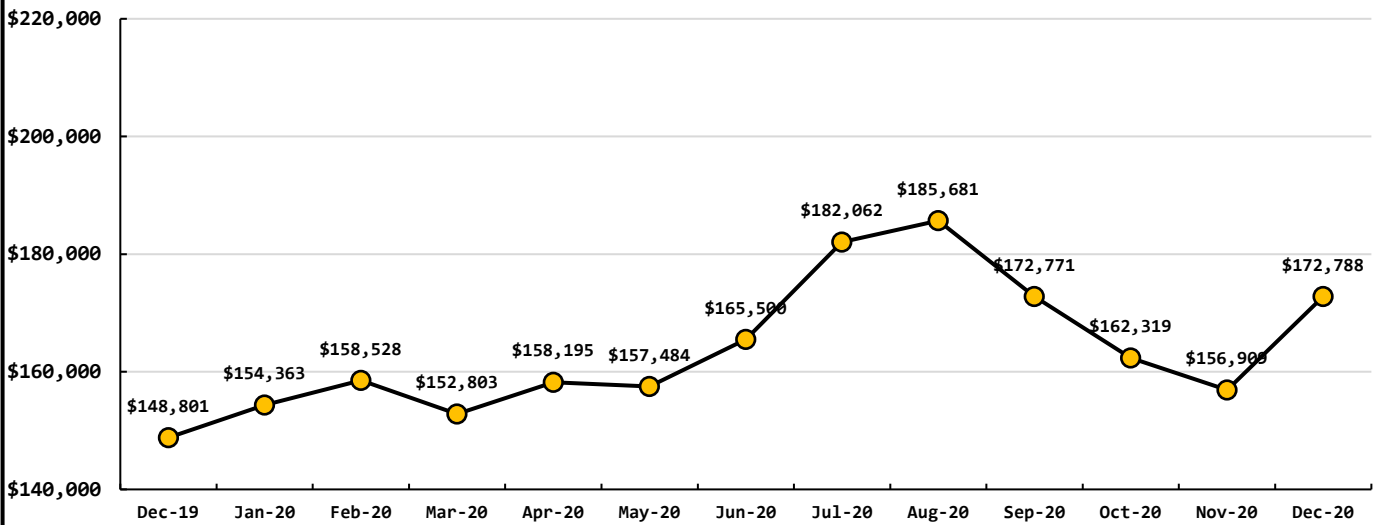
Data Period	Well Field Data		
January, 2021	North Wellfield Total	3.9585	
	South Wellfield Total	5.3980	<i>mg</i>
	Total Production	9.3565	<i>mg</i>

Data Period	Accounts Data		
January, 2021	Residential Base Rate	123,965	\$
	Residential Consumption	32,039	\$
	Commercial Base Rate	9,104	\$
	Commercial Consumption	7,680	\$
Residential Accounts <u>2,669</u> <i>ea</i>	Fire Flow Rate	1,163	\$
Commercial Accounts <u>100</u> <i>ea</i>	Backflow Assembly Rate	301	\$
Fire Flow Accounts <u>4</u> <i>ea</i>	Ilwaco Contract	0	\$
Backflow Accounts <u>32</u> <i>ea</i>	Ilwaco Reimbursement	0	\$
	Other Fees & Charges	214	\$
	Total	174,932	\$

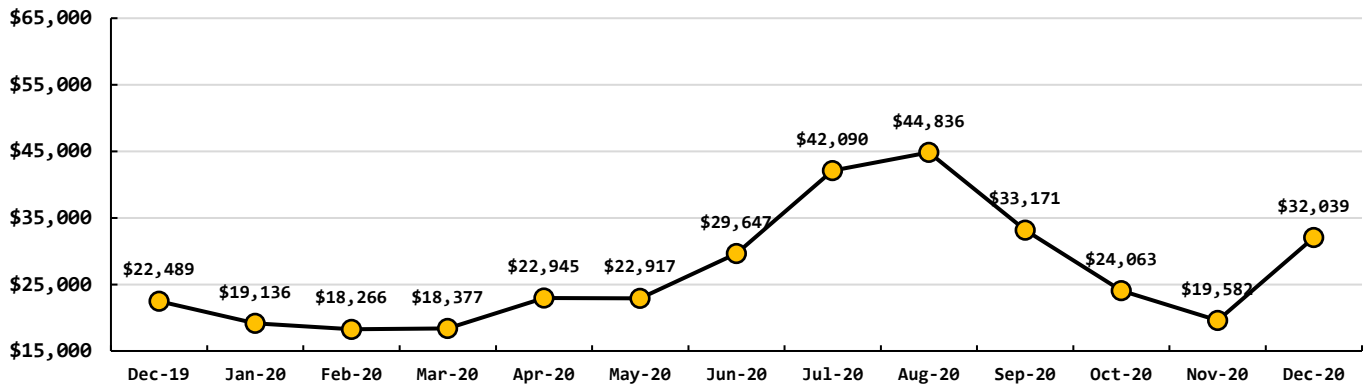
Total Residential Water Connections



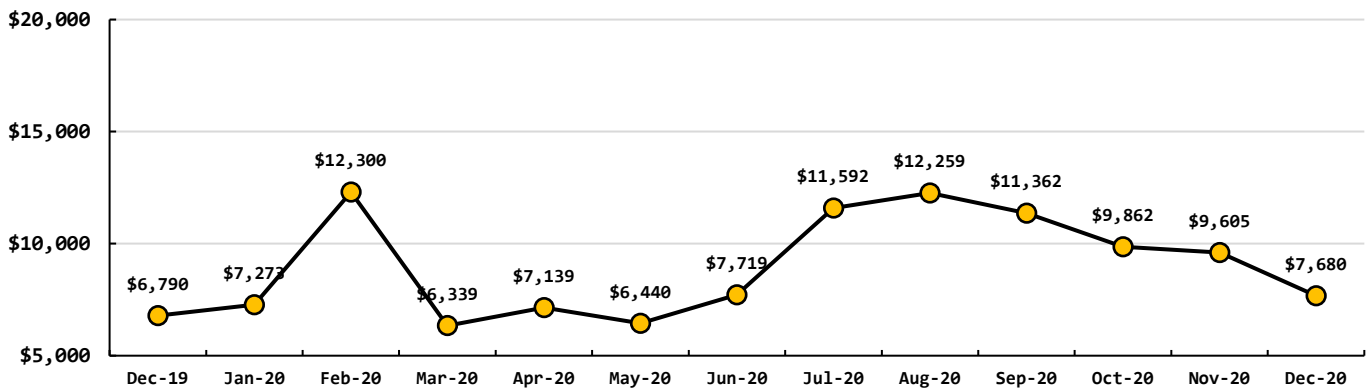
Total Base Rates & Consumption Rates



Total Residential Consumption Rates



Total Commercial Consumption Rates



Data Period

January, 2021

Operations Data

Past Due Accounts	273	ea
Properties with Liens	23	ea
Accounts Locked Off	0	ea
Water Main Locates	15	ea
Water Quality Complaints	0	ea
Customer Service Calls	62	ea
Customer Valves Installed	1	ea
New Services Installed	3	ea

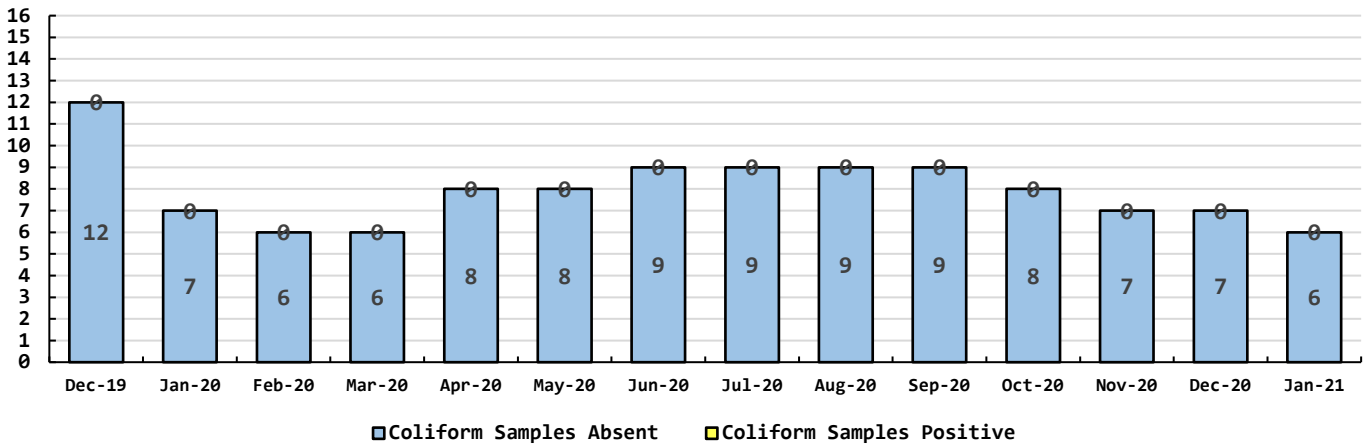
Data Period

Water Quality Data

January, 2021

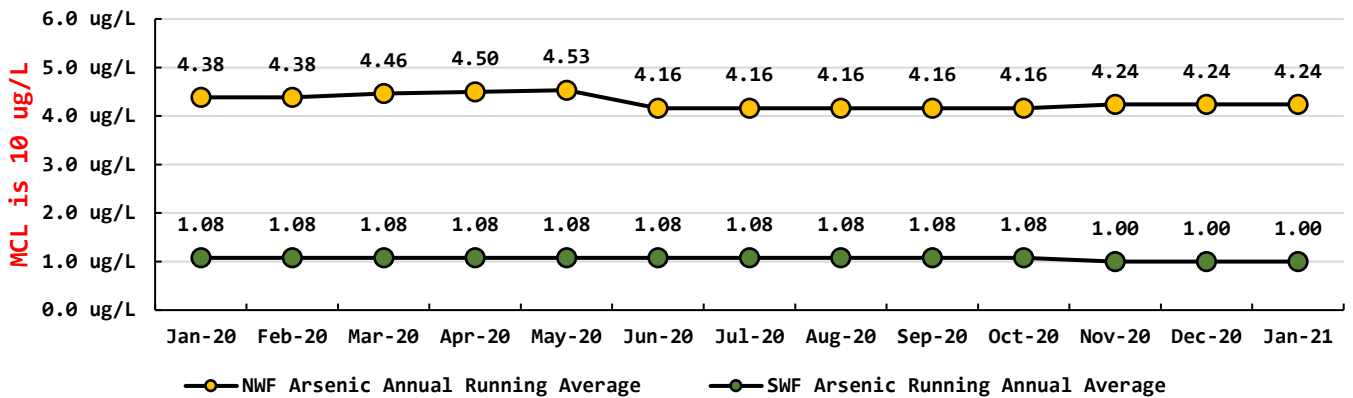
Coliform Samples Collected	6	ea
Coliform Samples Absent	6	ea
Coliform Samples Postive	0	ea
Coliform Sample Positive E.coli	0	ea
NWF Arsenic	4	ug/L
SWF Arsenic	1	ug/L
NWF Arsenic Annual Running Average	4	ug/L
SWF Arsenic Running Annual Average	1	ug/L

Coliform Bacteria Samples



Arsenic Monthly Annual Average

micrograms per liter (ug/L)



February 2021 Managers Report:

GM:

- I participated in an Asset Management class for Small Water Systems. It will help the District by looking at short- and long-lived assets and plan for their replacement. One thing that was mentioned that I strongly agree with is the maintenance and its ability to lengthen their life spans which is a cost savings for our water system.

Services

- Installed 3 new services.

Treatment plant operations:

- All secondary MCL's are being meet.
- New heads for the filter plant at the NWF have arrived. Waiting on other parts to come in.
- Pilot filter is ready to go for the NWF. Plan to start this in March.

Crew:

- Jake Nesbitt has passed his Water Treatment Plant Operator II test. I would like to congratulate him for the work that he put into it. Job well done. All the crew is working in the treatment plants with Dennis during this time of year.

Maintenance Items:

- Have replaced the leaf springs on both small trucks which puts the profile back the way they should be rather than pointing toward the sky. One truck is getting a set of tires.

Mainline breaks :

- Waterline break on 274th. All crew responded and had service back on by 1:00 p.m. that day. This included adding 60ft of C900 6" pipe to get past bad pipe. This mainline is scheduled for replacement this year.

January Work Orders

Read/Leave On	6
Turn Off/Lock – Customer Request	7
Turn Off/Lock – Non-Payment	0
Interrogate Meter	4
Locates	15
Unlock/Turn On	3
Test Backflow	8
Miscellaneous	3
Replace Meter Box	1
Low Pressure	0
Check Customer Valves	0
Dirty Water Complaints	0
Replace Meter	5
Install New Service	3
Assist Customer	0
Check For Leak	8
Re-Read Meter	11
Install Customer Control Valve	1
Total	75