

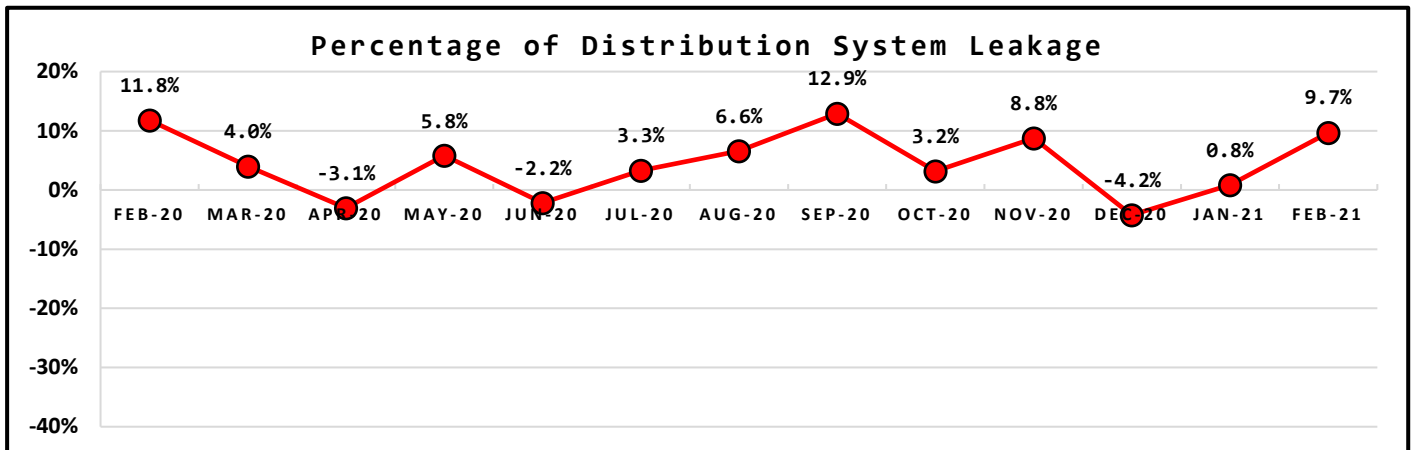
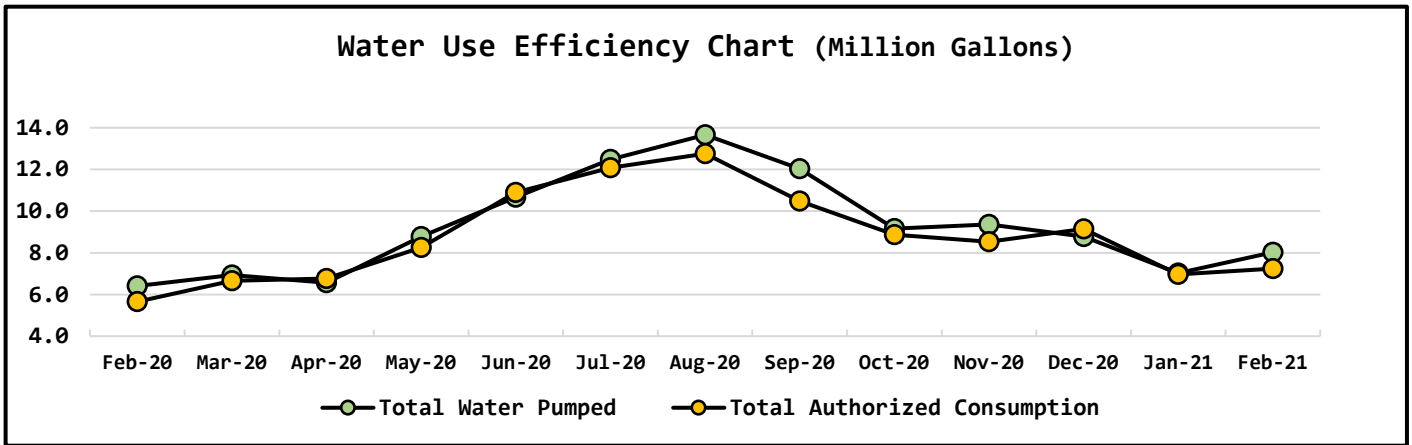
# NORTH BEACH WATER DISTRICT GENERAL MANAGERS REPORT

FOR

April-2021

Metering Period	Water Production
March 1, 2021 to March 31, 2021	NWF Master Meter <b>2.4941</b> mg
	SWF Master Meter <b>5.5302</b> mg
	Total Water Pumped <b>8.0243</b> mg

Metering Period	Water Consumption
March 1, 2021 to March 31, 2021	Total Water Sold <b>5.2088</b> mg
	NWF Backwash <b>0.1117</b> mg
	SWF Backwash <b>1.2041</b> mg
	Distribution Flushing, Fire Dept & Water use at NWF & SWF <b>0.7228</b> mg
	Total Authorized Consumption <b>7.2474</b> mg
	Distribution Leakage <b>0.7770</b> mg
	Percent of DSL <b>9.7%</b> %

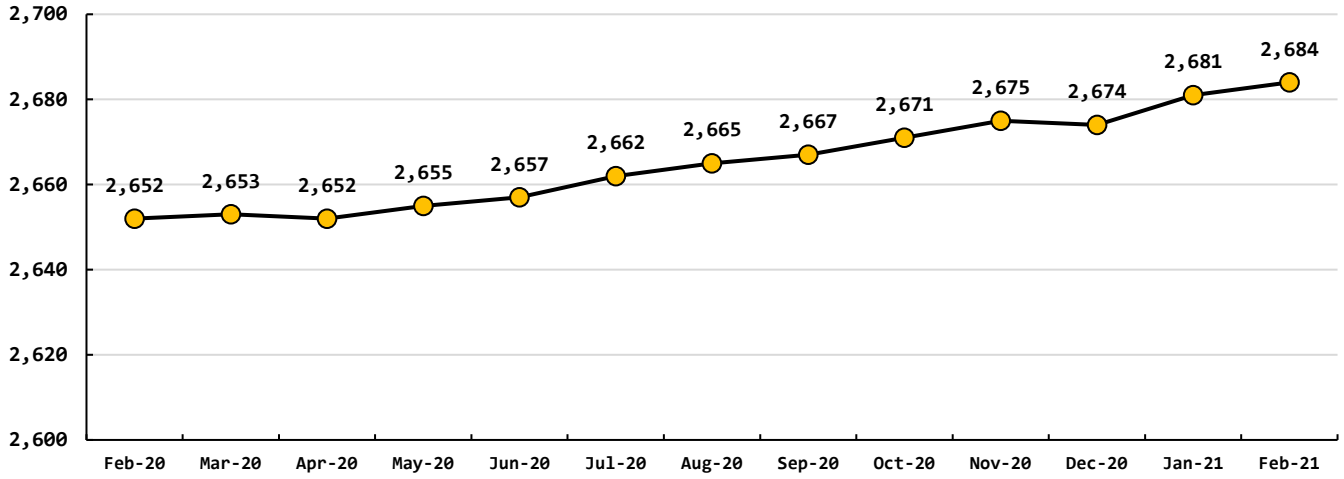


Data Period	Booster System Data		
March, 2021	North Wellfield Booster High gpm	1131	<i>gpm</i>
	North Wellfield Booster Low gpm	0	<i>gpm</i>
	North Wellfield Booster Average gpm	47	<i>gpm</i>
	Total MG pumped to Distribution at NWF	<b>1.6754</b>	<i>MG/M</i>
	South Wellfield Booster High gpm	1184	<i>gpm</i>
	South Wellfield Booster Low gpm	0	<i>gpm</i>
	South Wellfield Booster Average gpm	121	<i>gpm</i>
	Total MG pumped to Distribution at SWF	<b>4.598</b>	<i>MG/M</i>
	<b>Total Pumped to Distribution</b>	<b>6.2734</b>	<i>MG/M</i>
	North Wellfield High	70	<i>psi</i>
	North Wellfield Low	12	<i>psi</i>
	North Wellfield Average	60	<i>psi</i>
	South Wellfield Booster High	69	<i>psi</i>
	South Wellfield Booster Low	0	<i>psi</i>
	South Wellfield Booster Average	61	<i>psi</i>
	Distribution Pressure Readings per Month	<b>3,112</b>	
	<b>Highest</b>	72	<i>psi</i>
	<b>Lowest</b>	14	<i>psi</i>
	<b>Average</b>	62	<i>psi</i>

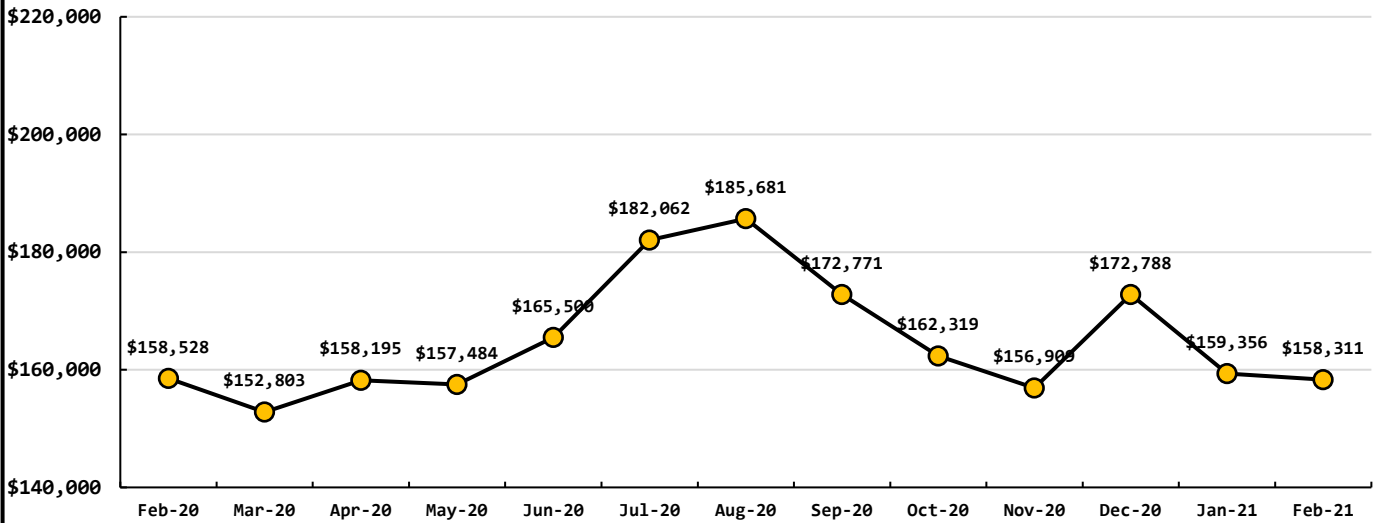
Data Period	Well Field Data		
March, 2021	North Wellfield Total	2.4941	
	South Wellfield Total	5.5302	<i>mg</i>
	Total Production	8.0243	<i>mg</i>

Data Period	Accounts Data		
March, 2021	Residential Base Rate	<b>124,313</b>	<i>\$</i>
	Residential Consumption	18,466	<i>\$</i>
	Commercial Base Rate	9,104	<i>\$</i>
	Commercial Consumption	6,429	<i>\$</i>
Residential Accounts <u>2,684</u> <i>ea</i>	Fire Flow Rate	1,163	<i>\$</i>
Commercial Accounts <u>100</u> <i>ea</i>	Backflow Assembly Rate	301	<i>\$</i>
Fire Flow Accounts <u>4</u> <i>ea</i>	Ilwaco Contract	0	<i>\$</i>
Backflow Accounts <u>33</u> <i>ea</i>	Ilwaco Reimbursement	0	<i>\$</i>
	Other Fees & Charges	1,051	<i>\$</i>
	<b>Total</b>	<b>161,217</b>	<i>\$</i>

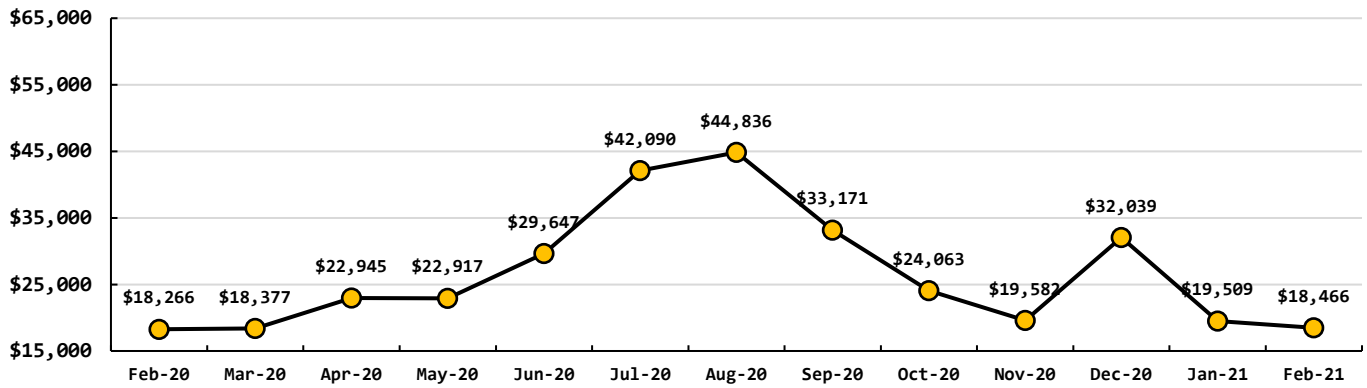
### Total Residential Water Connections



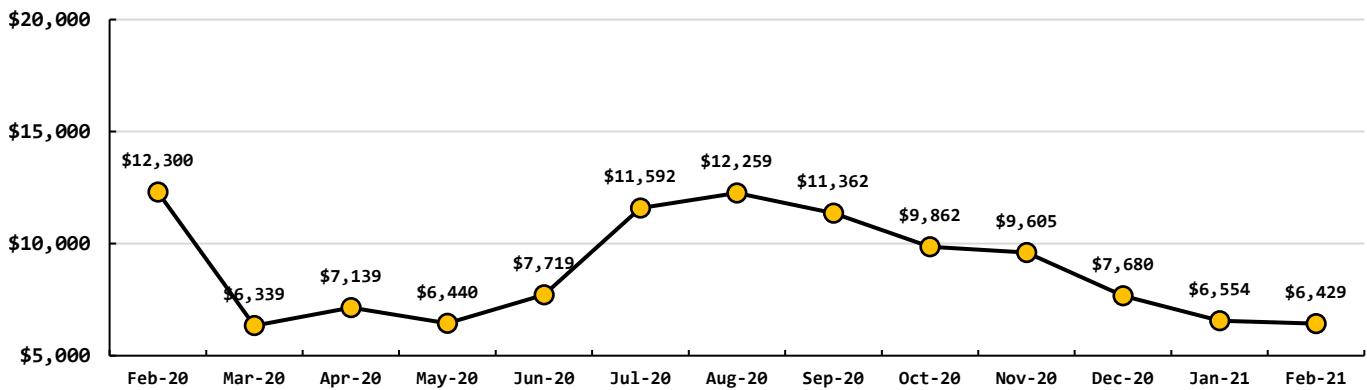
### Total Base Rates & Consumption Rates



### Total Residential Consumption Rates



### Total Commercial Consumption Rates



#### Data Period

March, 2021

#### Operations Data

Past Due Accounts	319	<i>ea</i>
Properties with Liens	19	<i>ea</i>
Accounts Locked Off	0	<i>ea</i>
Water Main Locates	32	<i>ea</i>
Water Quality Complaints	0	<i>ea</i>
Customer Service Calls	68	<i>ea</i>
Customer Valves Installed	5	<i>ea</i>
New Services Installed	3	<i>ea</i>

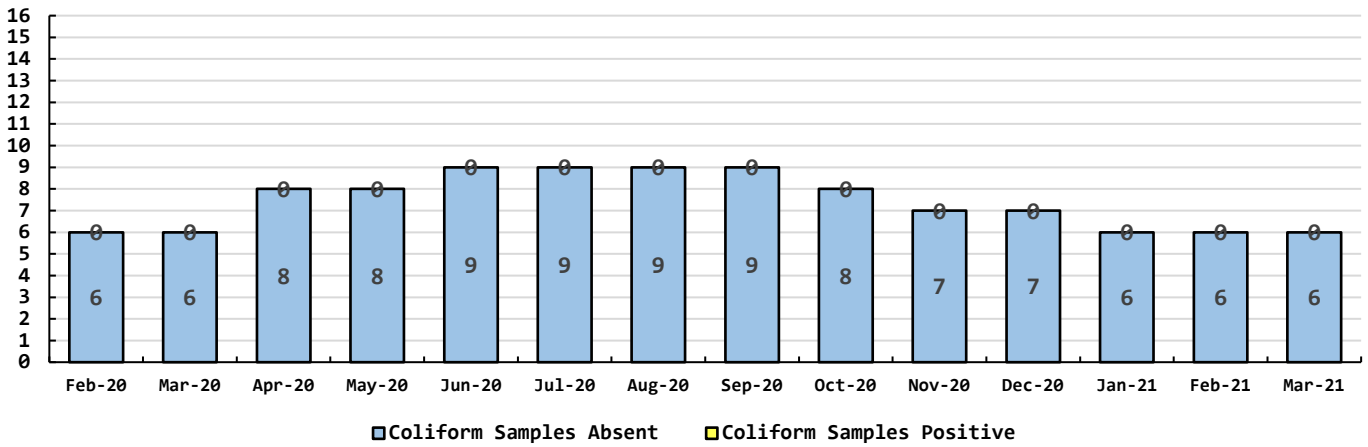
Data Period

Water Quality Data

March, 2021

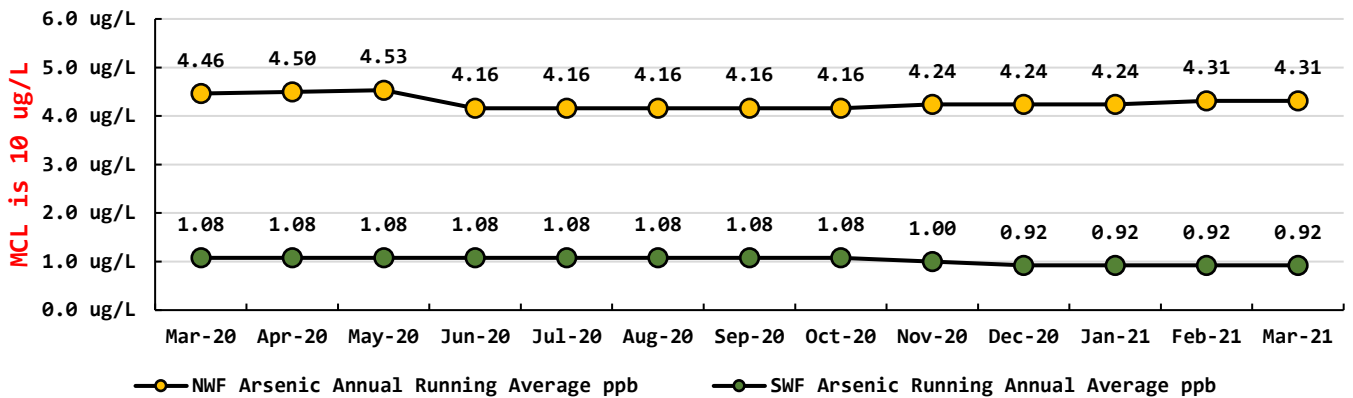
Coliform Samples Collected	6	ea
Coliform Samples Absent	6	ea
Coliform Samples Postive	0	ea
Coliform Sample Positive E.coli	0	ea
NWF Arsenic	4	ug/L
SWF Arsenic	1	ug/L
NWF Arsenic Annual Running Average	4	ug/L
SWF Arsenic Running Annual Average	1	ug/L

Coliform Bacteria Samples



Arsenic Monthly Annual Average

micrograms per liter (ug/L)



# April 2021 Managers Report



## Crew

- Service installs keep coming in.

## GIS

- Members continue to work on collecting GIS data. They have been aligning water mainlines to true coordinate and meter boxes so that we are able find them again years down the road. They are also checking meters for check valves and have found over 11 that do not have them. Those have been installed. This is an ongoing process that will be completed during down time.

## Plant Operations

- North Well Field – Power outages and spikes have caused Treatment Train & Booster Station to stop and start. This created a low pressure of 13.2 psi for 22 seconds. Operator and on call staff were called out to respond by battery backup dialer. System

had to be restarted. When transfer switch kicked back on the main breaker kicked out. Operator had to reset.

- South Well Field – Power outages and spikes have caused the system to go off and on creating surges that have kicked out pumps and treatment train. Again, the operators had to respond and reset equipment and make sure it was running correctly before leaving.
- Pilot filter study has passed G&O check list. Now we are awaiting the completion of the telemetry of the north well field head replacement to finish up this phase before starting the next one.

## GM

- Working with the Department of Ecology on last year's water use report. I am still awaiting their response.
- Have sent the information to Enduris to meet the criteria so that we do not have to pay the 20% deductible on our cyber liability coverage.
- Hach components for doing the Presence / Absence tests have been ordered for our lab. They have not arrived yet.
- Still working with Evergreen Rural Water on our Risk & Resilience Assessment that is due in July for the EPA.
- Met with Nikki about our Emergency Preparedness Plan and will be meeting every other week to check on her progress.
- Pipe & Parts for 3 of our projects arrived on April 13<sup>th</sup> and are awaiting the rest to come in on April 15<sup>th</sup>. We will start on 274<sup>th</sup> Street first and then move on to 255<sup>th</sup> Street.

## March Work Orders

Read/Leave On	10
Turn Off/Lock – Customer Request	9
Turn Off/Lock – Non-Payment	0
Interrogate Meter	9
Locates	32
Unlock/Turn On	7
Test Backflow	4
Miscellaneous	12
Replace Meter Box	0
Low Pressure	0
Check Customer Valves	1
Dirty Water Complaints	0
Replace Meter	0
Install New Service	3
Assist Customer	1
Check For Leak	8
Re-Read Meter	0
Install Customer Control Valve	5
<b>Total</b>	<b>101</b>