

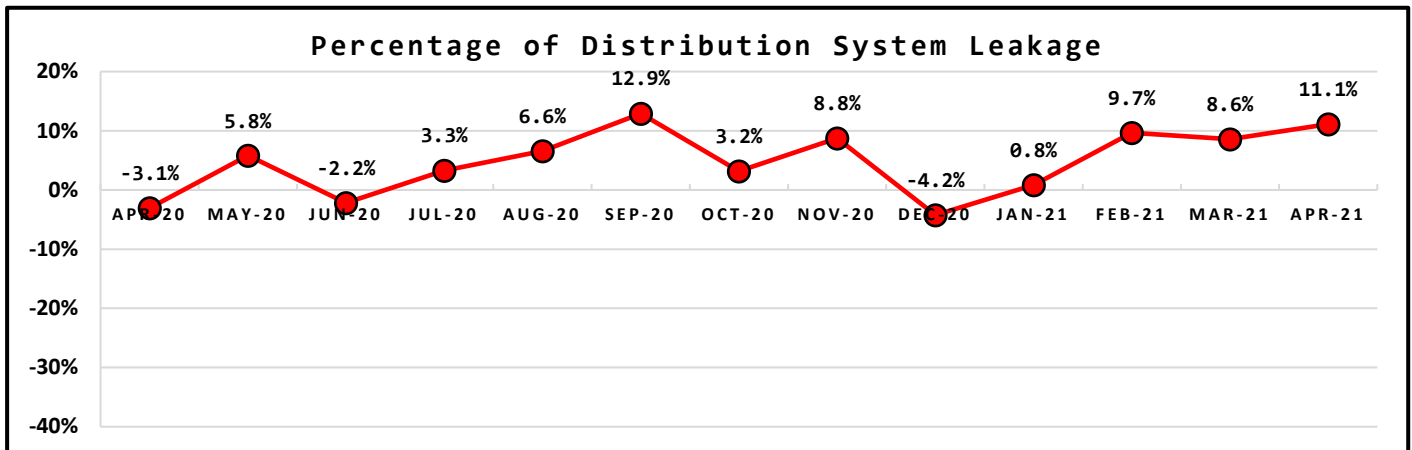
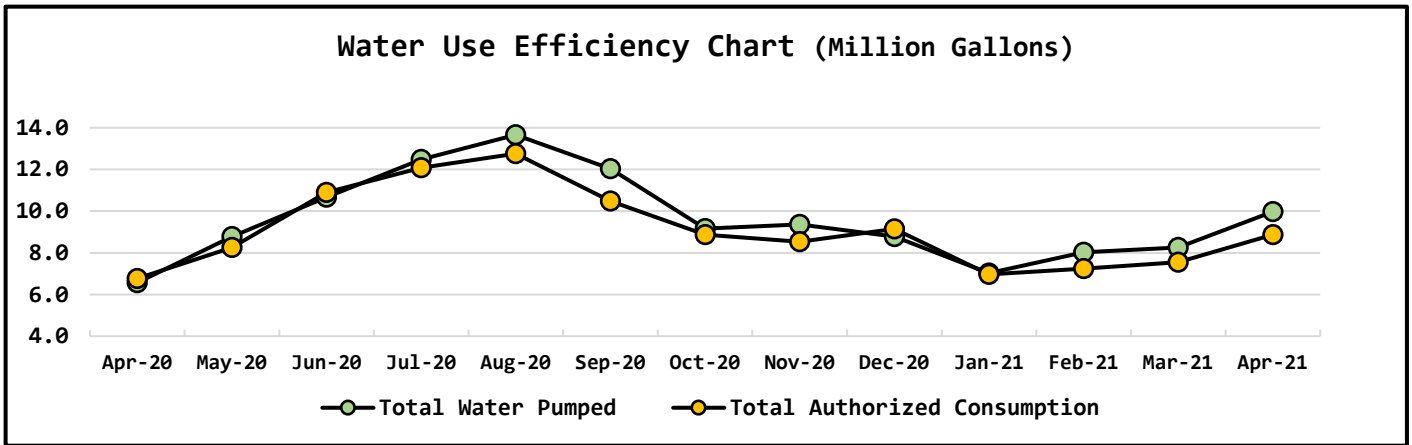
NORTH BEACH WATER DISTRICT GENERAL MANAGERS REPORT

FOR

June-2021

Metering Period		Water Production	
May 1, 2021	to	May 31, 2021	
		NWF Master Meter	3.8018 mg
		SWF Master Meter	6.1711 mg
		Total Water Pumped	9.9729 mg

Metering Period		Water Consumption	
May 1, 2021	to	May 31, 2021	
		Total Water Sold	6.3285 mg
		NWF Backwash	0.1689 mg
		SWF Backwash	1.3326 mg
		Distribution Flushing, Fire Dept & Water use at NWF & SWF	1.0321 mg
		Total Authorized Consumption	8.8621 mg
		Distribution Leakage	1.1108 mg
		Percent of DSL	11.1% %

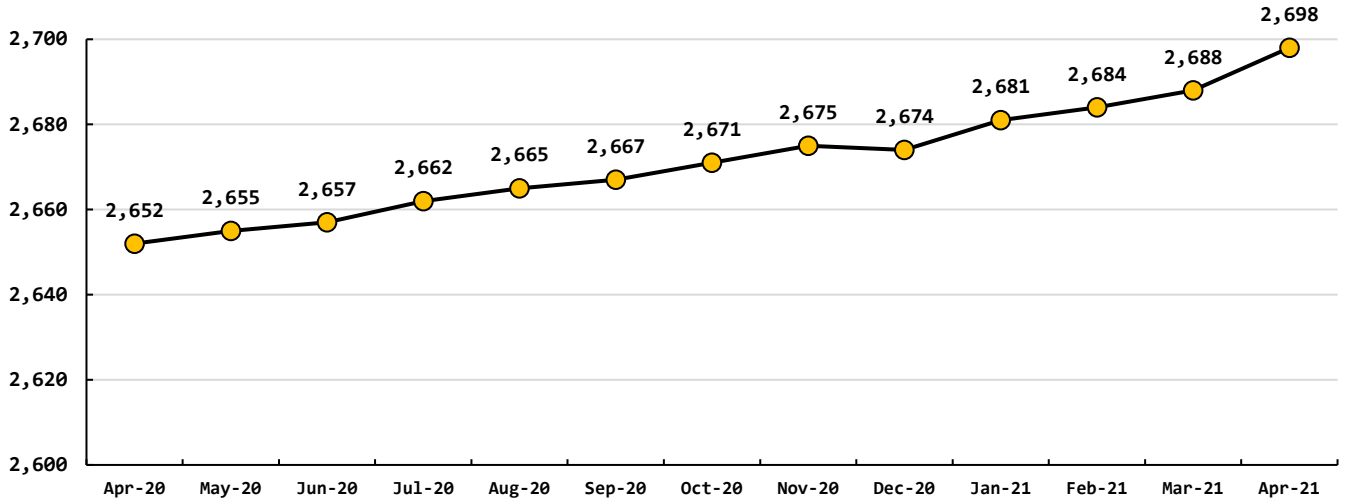


Data Period	Booster System Data		
May, 2021	North Wellfield Booster High gpm	905	<i>gpm</i>
	North Wellfield Booster Low gpm	0	<i>gpm</i>
	North Wellfield Booster Average gpm	79	<i>gpm</i>
	Total MG pumped to Distribution at NWF	1.6754	<i>MG/M</i>
	South Wellfield Booster High gpm	1282	<i>gpm</i>
	South Wellfield Booster Low gpm	0	<i>gpm</i>
	South Wellfield Booster Average gpm	140	<i>gpm</i>
	Total MG pumped to Distribution at SWF	4.598	<i>MG/M</i>
	Total Pumped to Distribution	6.2734	<i>MG/M</i>
	North Wellfield High	66	<i>psi</i>
	North Wellfield Low	43	<i>psi</i>
	North Wellfield Average	60	<i>psi</i>
	South Wellfield Booster High	69	<i>psi</i>
	South Wellfield Booster Low	43	<i>psi</i>
	South Wellfield Booster Average	61	<i>psi</i>
	245th Distribution Pressure Readings per Month	3,080	
	Highest	72	<i>psi</i>
	Lowest	45	<i>psi</i>
	Average	62	<i>psi</i>

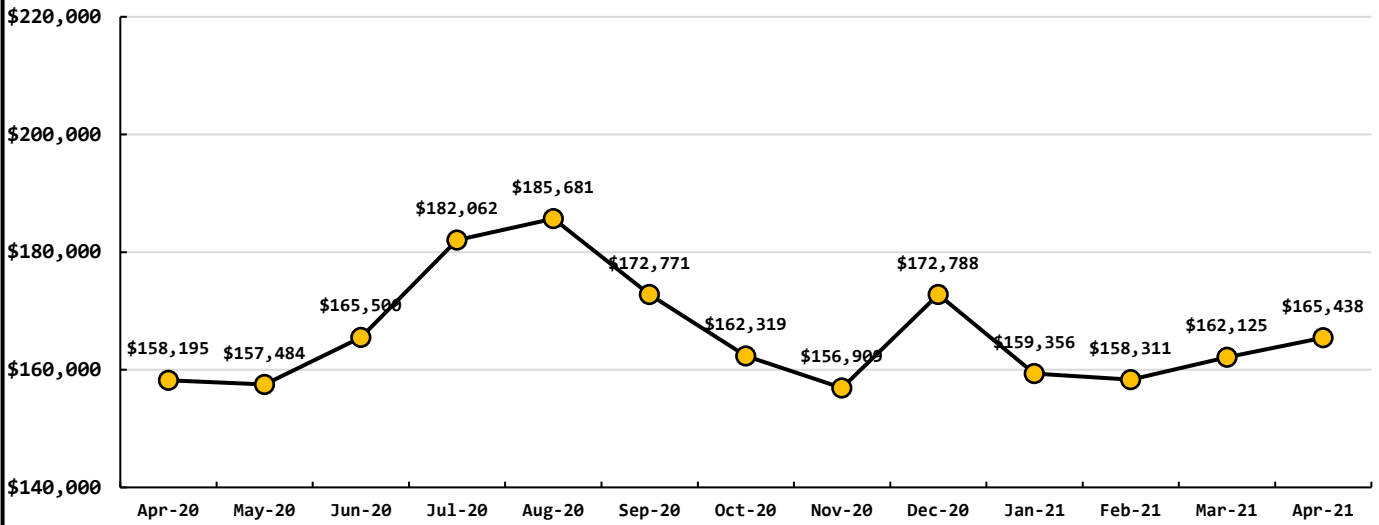
Data Period	Well Field Data		
May, 2021	North Wellfield Total	3.8018	
	South Wellfield Total	6.1711	<i>mg</i>
	Total Production	9.9729	<i>mg</i>

Data Period	Accounts Data		
May, 2021	Residential Base Rate	124,941	\$
	Residential Consumption	23,925	\$
	Commercial Base Rate	9,056	\$
	Commercial Consumption	7,515	\$
Residential Accounts <u>2,698</u> <i>ea</i>	Fire Flow Rate	1,163	\$
Commercial Accounts <u>99</u> <i>ea</i>	Backflow Assembly Rate	301	\$
Fire Flow Accounts <u>4</u> <i>ea</i>	Ilwaco Contract	0	\$
Backflow Accounts <u>32</u> <i>ea</i>	Ilwaco Reimbursement	0	\$
	Other Fees & Charges	0	\$
	Total	166,909	\$

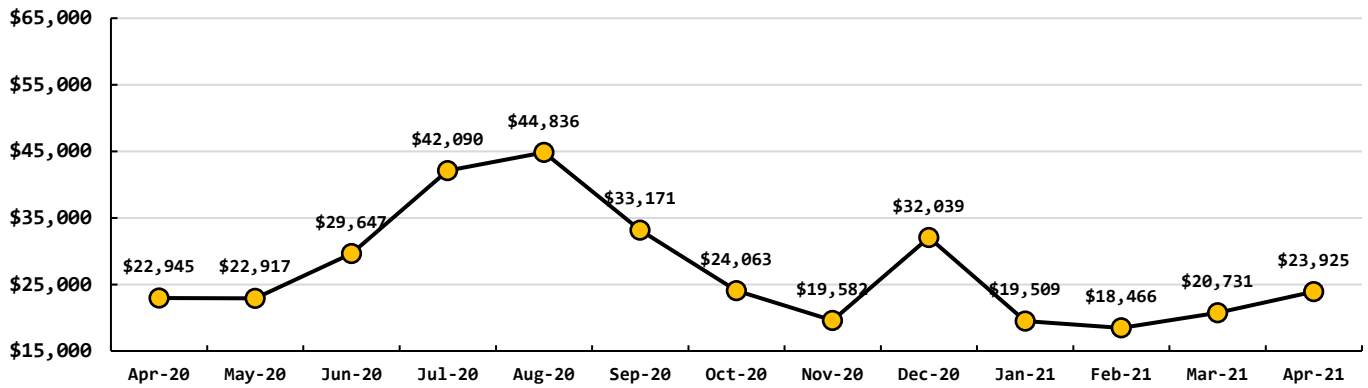
Total Residential Water Connections



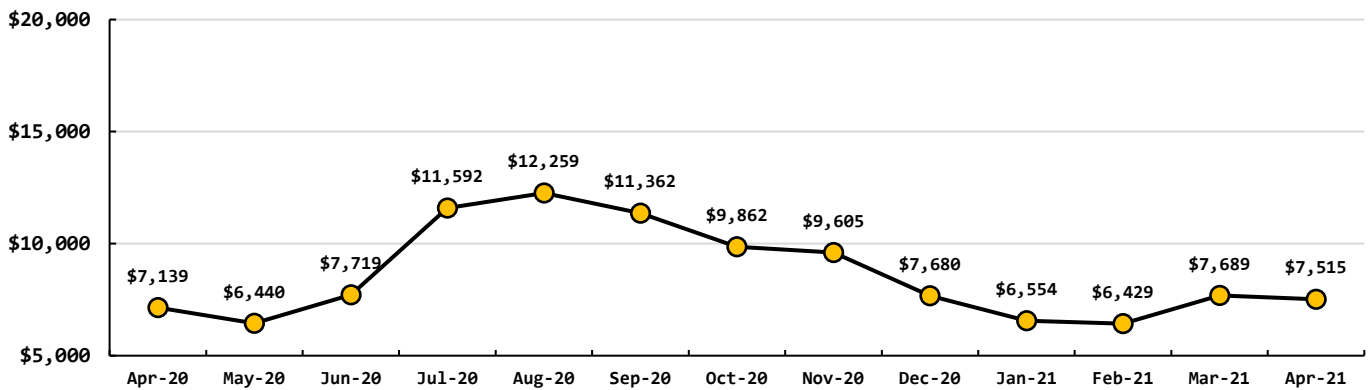
Total Base Rates & Consumption Rates



Total Residential Consumption Rates



Total Commercial Consumption Rates



Data Period

May, 2021

Operations Data

Past Due Accounts	268	<i>ea</i>
Properties with Liens	19	<i>ea</i>
Accounts Locked Off	0	<i>ea</i>
Water Main Locates	31	<i>ea</i>
Water Quality Complaints	1	<i>ea</i>
Customer Service Calls	48	<i>ea</i>
Customer Valves Installed	0	<i>ea</i>
New Services Installed	0	<i>ea</i>

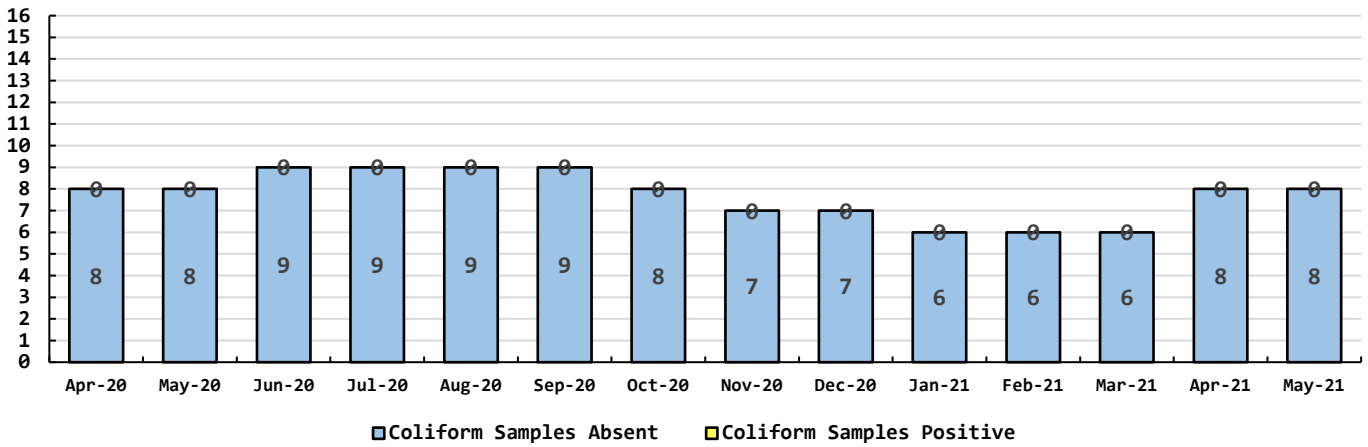
Data Period

Water Quality Data

May, 2021

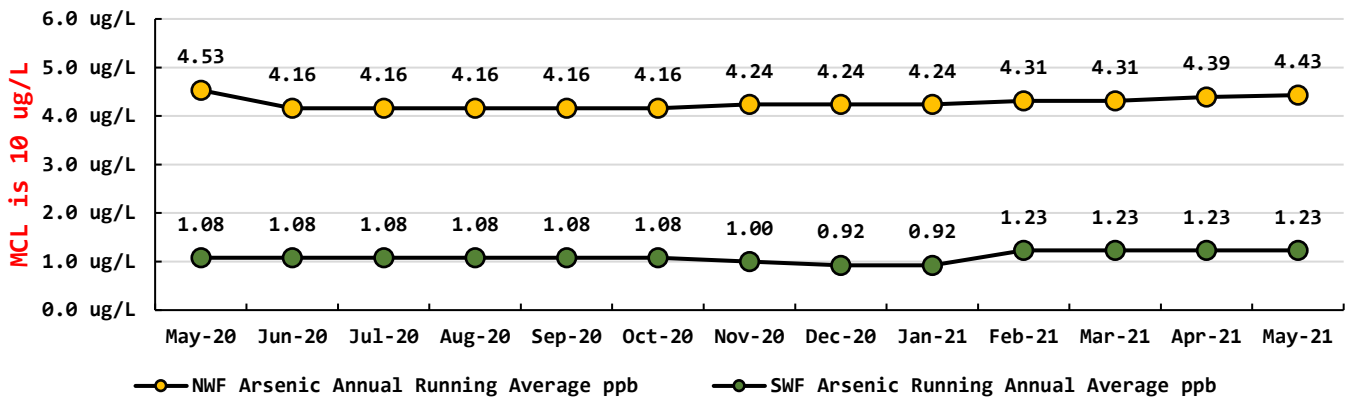
Coliform Samples Collected	8	ea
Coliform Samples Absent	8	ea
Coliform Samples Postive	0	ea
Coliform Sample Positive E.coli	0	ea
NWF Arsenic	5	ug/L
SWF Arsenic	1	ug/L
NWF Arsenic Annual Running Average	4.43	ug/L
SWF Arsenic Running Annual Average	1.23	ug/L

Coliform Bacteria Samples



Arsenic Monthly Annual Average

micrograms per liter (ug/L)



General Managers Report for June 2021:

- Pilot test is in progress.
- South of 217th on HWY 103, waterline leak on mainline repaired Thursday the 17th. We cut away the portion that was leaking and installed an inline (8" MJ X MJ gat valve) and connected new line to service lateral.
- 274th Street. Crew cut away old T and gate valve, installed a new 8" T with 3 new gate valves for control of mainline. Temporary service lines have been run to keep residents in service while construction continues.
- GIS work continues. We used our Vac machine and located the raw waterlines that run to the treatment train at the North Well Field. We painted these locations on the ground and had Mark fly his drone over the area and now these locations are a layer on our GIS system. Soon, we will do the backwash IN & OUT lines as well.
- Hydrant flushing started on the 12th of May and finished on the 1st of June. System looked very clean.
- South Well Field Communications – Found that the OM2 fiber optic line that G&O spec'd is no longer made and I am waiting to find out from them if the proposed line from Anixter and Graybar will work.
- I have found sources in regard to water bladders that we had discussed and found that they are anywhere from \$900.00 to \$2000.00 for a 500-gallon one. Looking to find one that will hold up.
- Met with Greg Christenson and spent the day talking with him about the well field and distribution system. Greg knows that he is welcome here anytime.
- Working with transfer switch setups at each of our locations. I found out that the generator exercises but does not throw the transfer switch to allow it to run all equipment it has to. We now understand how to do it manually, but I am working on getting it set up to do this automatically. We will get there soon.

May Work Orders

Read/Leave On	10
Turn Off/Lock – Customer Request	3
Turn Off/Lock – Non-Payment	0
Interrogate Meter	1
Locates	32
Unlock/Turn On	10
Test Backflow	0
Miscellaneous	2
Replace Meter Box	0
Low Pressure	2
Check Customer Valves	0
Dirty Water Complaints	0
Replace Meter	0
Install New Service	0
Assist Customer	3
Check For Leak	0
Re-Read Meter	4
Install Customer Control Valve	1
Total	68