

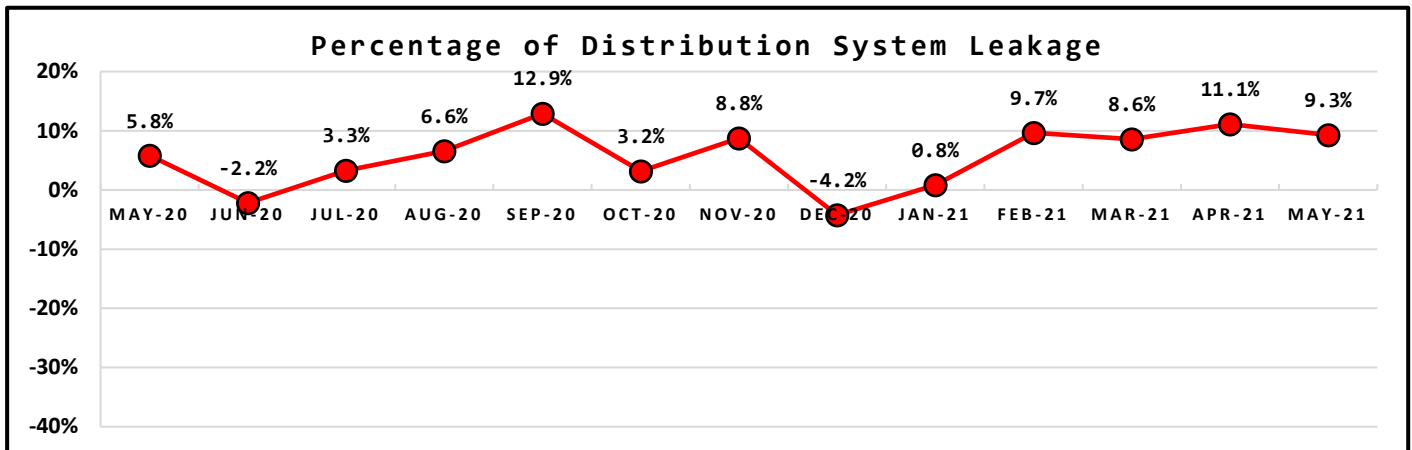
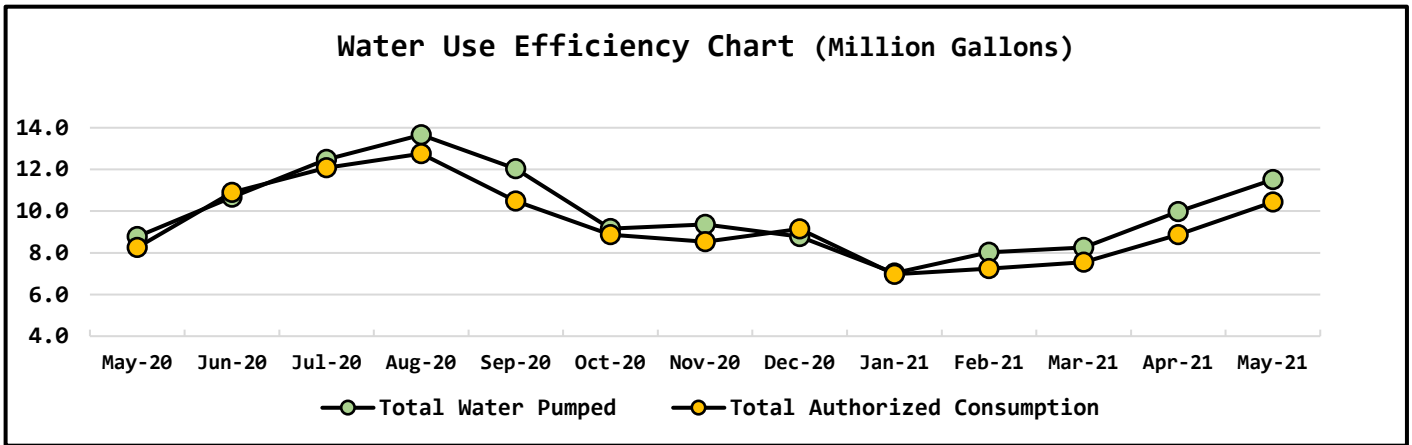
NORTH BEACH WATER DISTRICT GENERAL MANAGERS REPORT

FOR

July-2021

Metering Period	Water Production
June 1, 2021 to June 30, 2021	NWF Master Meter 4.7076 mg
	SWF Master Meter 6.8020 mg
	Total Water Pumped 11.5096 mg

Metering Period	Water Consumption
June 1, 2021 to June 30, 2021	Total Water Sold 7.5938 mg
	NWF Backwash 0.2088 mg
	SWF Backwash 1.4314 mg
	Distribution Flushing, Fire Dept & Water use at NWF & SWF 1.2086 mg
	Total Authorized Consumption 10.4426 mg
	Distribution Leakage 1.0671 mg
	Percent of DSL 9.3% %

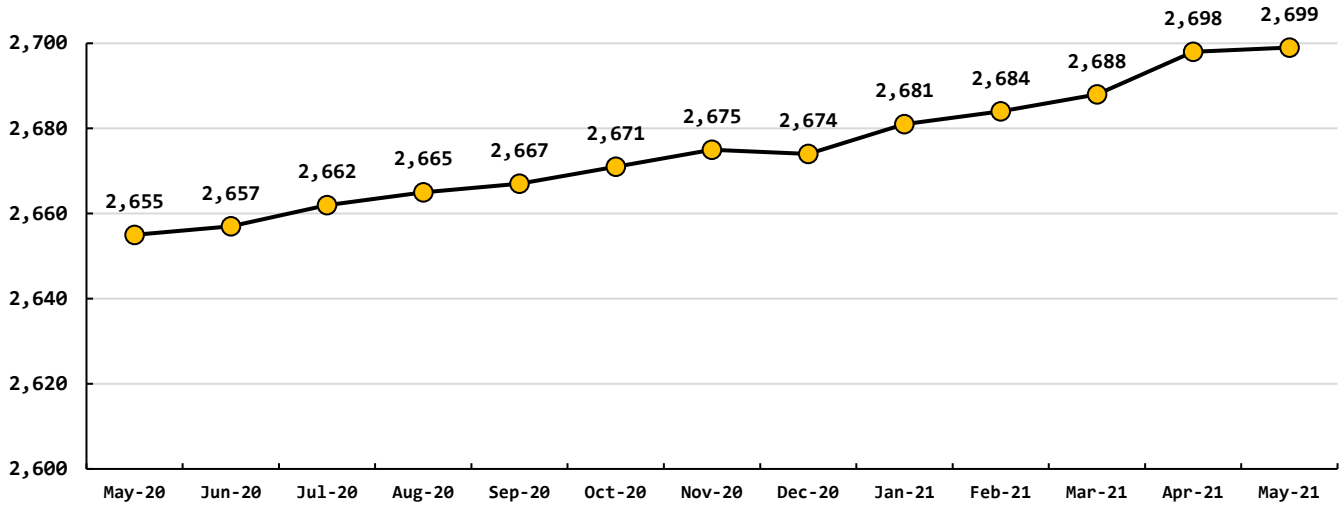


Data Period	Booster System Data		
June, 2021	North Wellfield Booster High gpm	739	<i>gpm</i>
	North Wellfield Booster Low gpm	0	<i>gpm</i>
	North Wellfield Booster Average gpm	99	<i>gpm</i>
	Total MG pumped to Distribution at NWF	1.6754	<i>MG/M</i>
	South Wellfield Booster High gpm	1319	<i>gpm</i>
	South Wellfield Booster Low gpm	0	<i>gpm</i>
	South Wellfield Booster Average gpm	160	<i>gpm</i>
	Total MG pumped to Distribution at SWF	4.598	<i>MG/M</i>
	Total Pumped to Distribution	6.2734	<i>MG/M</i>
	North Wellfield High	66	<i>psi</i>
	North Wellfield Low	40	<i>psi</i>
	North Wellfield Average	60	<i>psi</i>
	South Wellfield Booster High	69	<i>psi</i>
	South Wellfield Booster Low	44	<i>psi</i>
	South Wellfield Booster Average	61	<i>psi</i>
	245th Distribution Pressure Readings per Month	2,650	
	Highest	69	<i>psi</i>
	Lowest	43	<i>psi</i>
	Average	61	<i>psi</i>

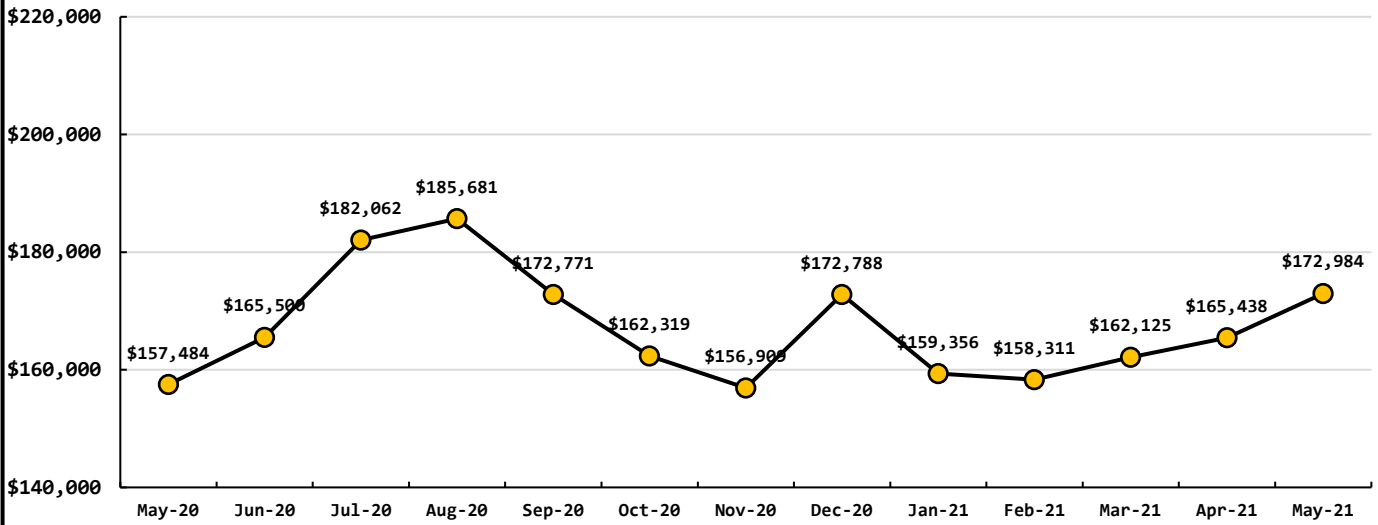
Data Period	Well Field Data		
June, 2021	North Wellfield Total	4.7076	
	South Wellfield Total	6.8020	<i>mg</i>
	Total Production	11.5096	<i>mg</i>

Data Period	Accounts Data		
June, 2021	Residential Base Rate	125,066	\$
	Residential Consumption	30,361	\$
	Commercial Base Rate	9,056	\$
	Commercial Consumption	8,501	\$
Residential Accounts <u>2,699</u> <i>ea</i>	Fire Flow Rate	1,163	\$
Commercial Accounts <u>99</u> <i>ea</i>	Backflow Assembly Rate	301	\$
Fire Flow Accounts <u>4</u> <i>ea</i>	Ilwaco Contract	0	\$
Backflow Accounts <u>32</u> <i>ea</i>	Ilwaco Reimbursement	0	\$
	Other Fees & Charges	399	\$
	Total	174,853	\$

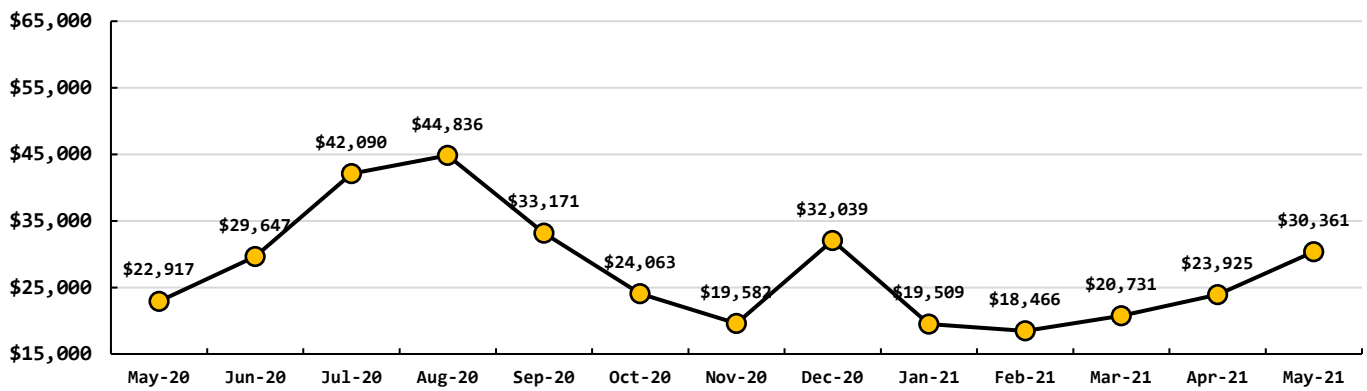
Total Residential Water Connections



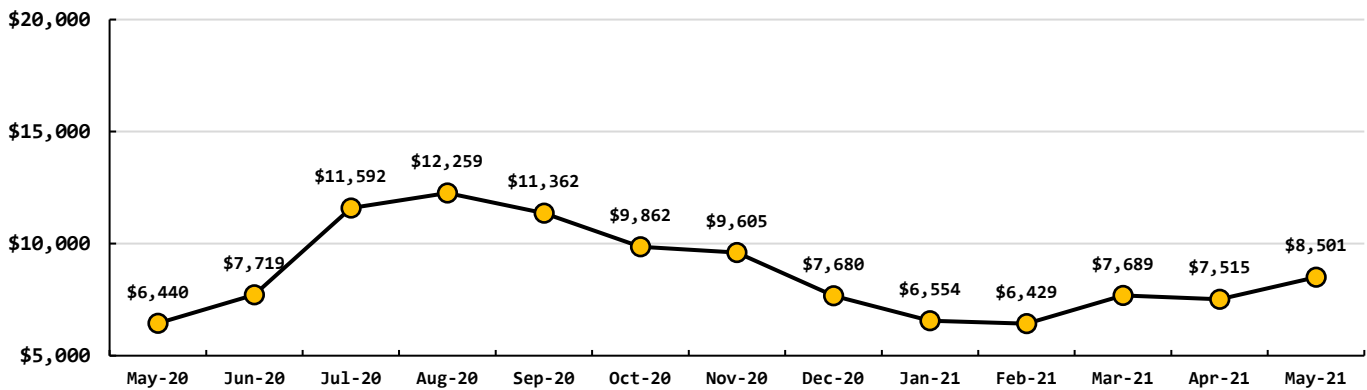
Total Base Rates & Consumption Rates



Total Residential Consumption Rates



Total Commercial Consumption Rates



Data Period

June, 2021

Operations Data

Past Due Accounts	268	<i>ea</i>
Properties with Liens	19	<i>ea</i>
Accounts Locked Off	0	<i>ea</i>
Water Main Locates	31	<i>ea</i>
Water Quality Complaints	1	<i>ea</i>
Customer Service Calls	48	<i>ea</i>
Customer Valves Installed	0	<i>ea</i>
New Services Installed	0	<i>ea</i>

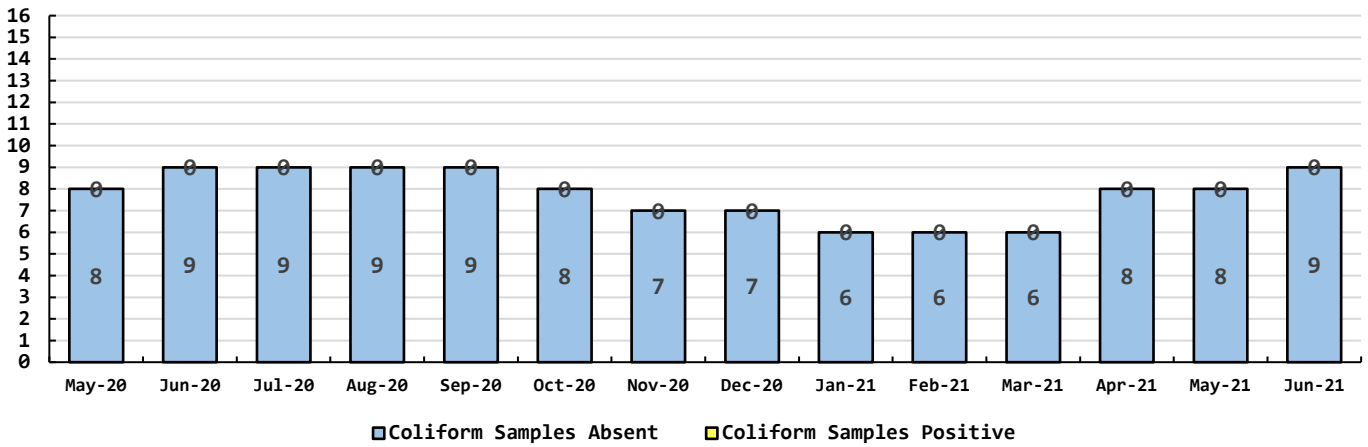
Data Period

Water Quality Data

June, 2021

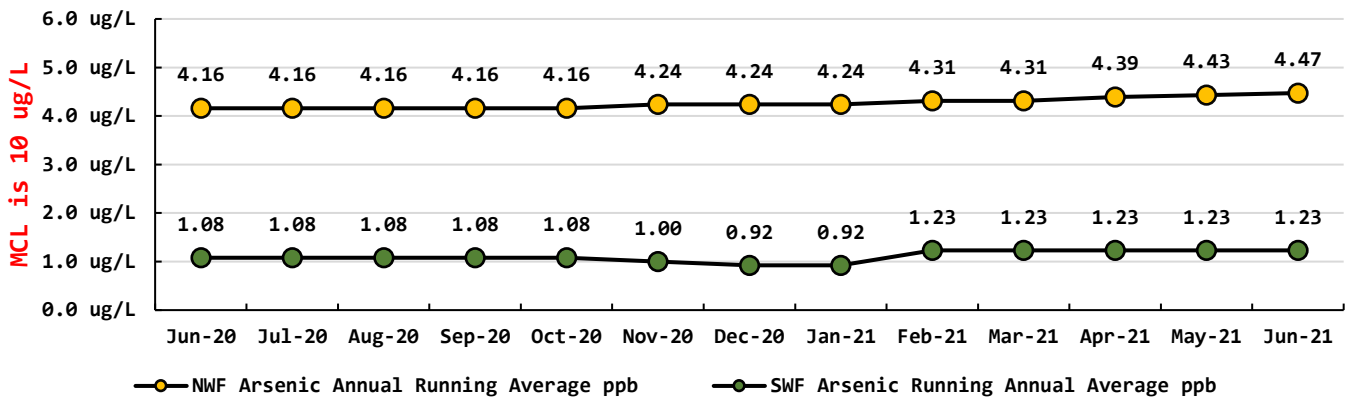
Coliform Samples Collected	8	ea
Coliform Samples Absent	8	ea
Coliform Samples Postive	0	ea
Coliform Sample Positive E.coli	0	ea
NWF Arsenic	5	ug/L
SWF Arsenic	1	ug/L
NWF Arsenic Annual Running Average	4.43	ug/L
SWF Arsenic Running Annual Average	1.23	ug/L

Coliform Bacteria Samples



Arsenic Monthly Annual Average

micrograms per liter (ug/L)



General Managers Report for June 2021:

- Pilot test in progress
- 274th Street - Crew almost finished up. Should be completed and cleaned up by early next week.
- GIS work continues.
- Installed one new service.
- South Well Field Communications – Finally found OM3 fiber. Awaiting one more bid.
- Met with Pacific County Fire Department and it sounds like they are going forward with their project. Will go into more detail at the board meeting.

June Work Orders

Read/Leave On	9
Turn Off/Lock – Customer Request	3
Turn Off/Lock – Non-Payment	0
Interrogate Meter	5
Locates	38
Unlock/Turn On	2
Test Backflow	9
Miscellaneous	4
Replace Meter Box	1
Low Pressure	0
Check Customer Valves	0
Dirty Water Complaints	0
Replace Meter	1
Install New Service	1
Assist Customer	3
Check For Leak	5
Re-Read Meter	1
Install Customer Control Valve	0
Total	82