

NORTH BEACH WATER DISTRICT

GENERAL MANAGERS REPORT

For October - 2021

Data Period	Well Field Data
<u>September 1, 2021</u> to <u>September 30, 2021</u>	NWF Master Meter: <u>6.4444</u> mg
	SWF Master Meter: <u>3.3464</u> mg
	Total Pumped to Plant: <u>9.7908</u> MG

Data Period	August 2021 Data:
<u>August 1, 2021</u> to <u>August 31, 2021</u>	NWF Master Meter: <u>4.6231</u> mg
	SWF Master Meter: <u>7.7761</u> mg
	Accounted for Water: <u>2.3960</u>
	Total Water Pumped: <u>12.3992</u> MG

Metering Period	
<u>August 1, 2021</u> to <u>August 31, 2021</u>	Total Water Sold : <u>9.0840</u> MG

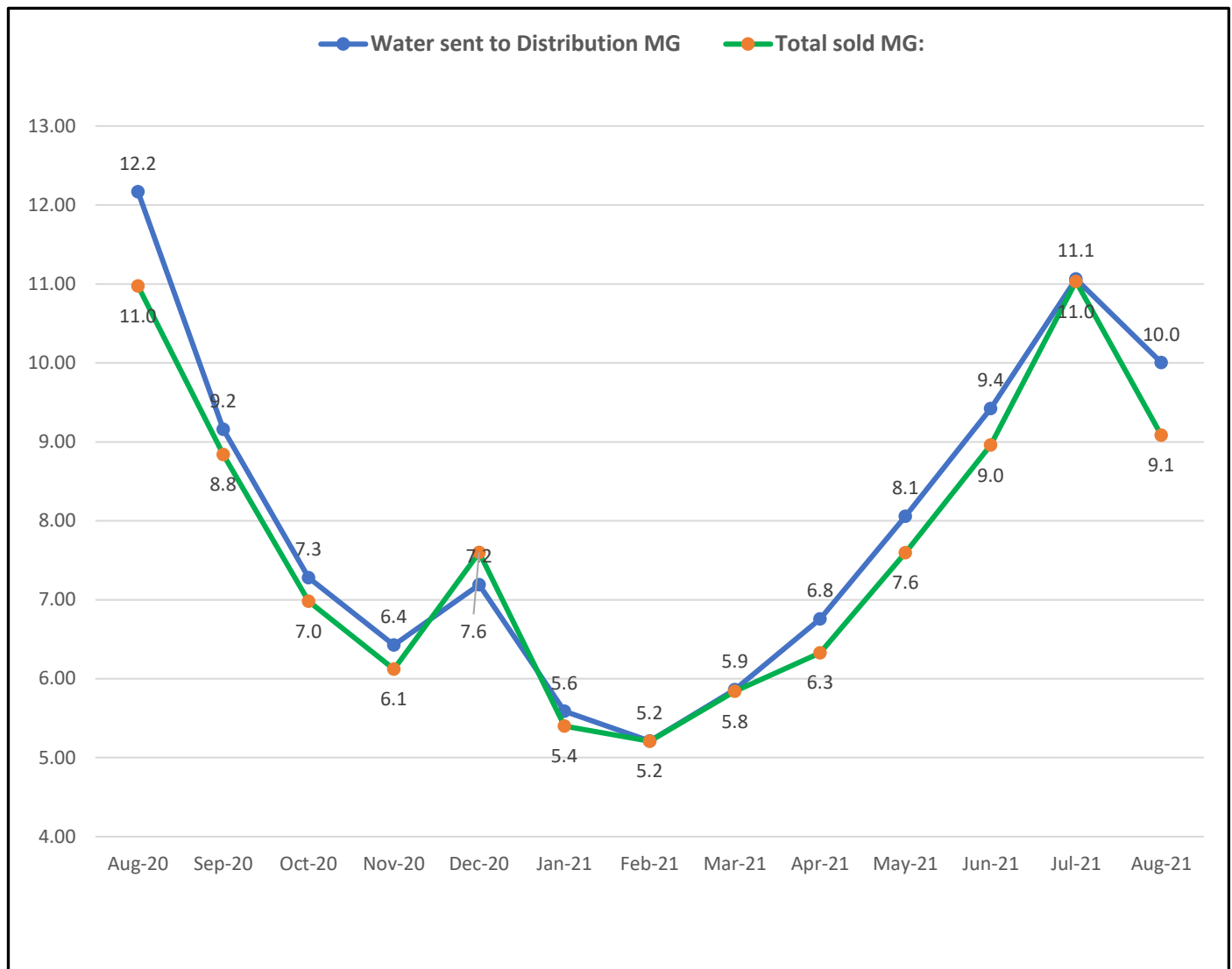
August Accounted for Water:	
	NWF Backwash : <u>0.1924</u> mg
	SWF Backwash : <u>1.5299</u> mg
Distribution Flushing, Fire Dept, Pac Co & Waterline Leak Repair's:	<u>0.6602</u> mg
	NBWD use NWF & SWF: <u>0.0135</u> mg
	Total Accounted for Water: <u>2.3960</u> MG

Total Water Treated :	<u>12.3992</u> MG
Accounted for Water Used :	<u>2.3960</u> MG
Water Sent to Distribution :	<u>10.0032</u> MG
Water Sold :	<u>9.0840</u> MG
Distribution Leakage :	<u>0.9192</u> MG
Percent of Unaccounted for Water :	<u>9.19</u> %

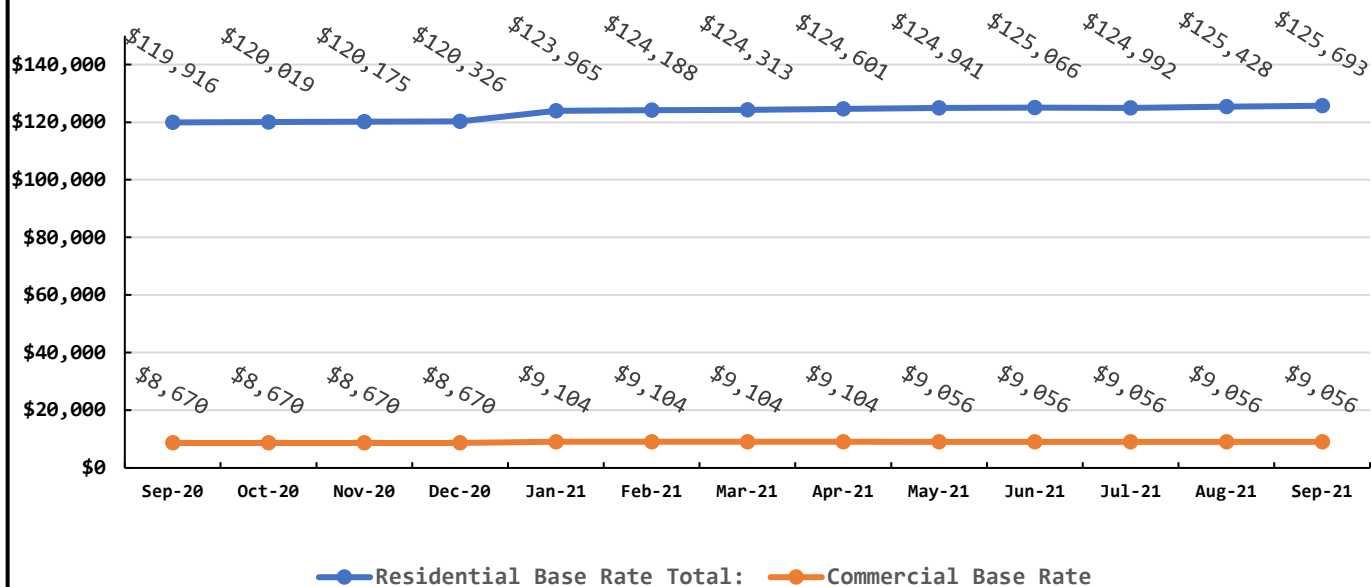
Data Period	September 1 - 30, 2021	Booster System Data
--------------------	-------------------------------	----------------------------

North Wellfield Booster High gpm :	<u>1125</u>	<i>gpm</i>
North Wellfield Booster Low gpm :	<u>0</u>	<i>gpm</i>
North Wellfield Booster Average gpm :	<u>142</u>	<i>gpm</i>
North Wellfield High psi:	<u>67</u>	<i>psi</i>
North Wellfield Low psi:	<u>27</u>	<i>psi</i>
North Wellfield Average psi:	<u>59</u>	<i>psi</i>
Total MG Booster pumped to Distribution at NWF:	<u>6.0974</u>	<i>MG</i>
Total MG Booster pumped to Distribution at SWF:	<u>3.2450</u>	<i>MG</i>
Total Booster Pumped to Distribution :	<u>9.3424</u>	<i>MG</i>
South Wellfield Booster High gpm:	<u>1,173</u>	<i>gpm</i>
South Wellfield Booster Low gpm:	<u>0</u>	<i>gpm</i>
South Wellfield Booster Average gpm:	<u>77</u>	<i>gpm</i>
South Wellfield Booster High psi:	<u>74</u>	<i>psi</i>
South Wellfield Booster Low psi:	<u>26</u>	<i>psi</i>
South Wellfield Booster Average psi:	<u>60</u>	<i>psi</i>
245th Distribution Pressure Readings per Month:	<u>3,110</u>	
Highest	<u>69</u>	<i>psi</i>
Lowest	<u>26</u>	<i>psi</i>
Average	<u>60</u>	<i>psi</i>

Data Period			Accounts Data		
September 1st, 2021			Residential Base Rates	\$125,692.69	\$
August 1 - 31, 2021			Residential Consumption	\$36,960.04	\$
September 1st, 2021			Commercial Base Rate	\$9,056.44	\$
August 1 - 31, 2021			Commercial Consumption	\$11,451.93	\$
			Fire Flow Rate	\$1,163.31	\$
New Residential Accounts	2,713	ea	Backflow Assembly Rate	\$307.50	\$
Commercial Accounts	99	ea	Contract Reimbursement	0	\$
Fire Flow Accounts	4	ea	Other Fees & Charges	\$195.90	\$
Backflow Accounts	38	ea	Total:	\$183,161.10	\$

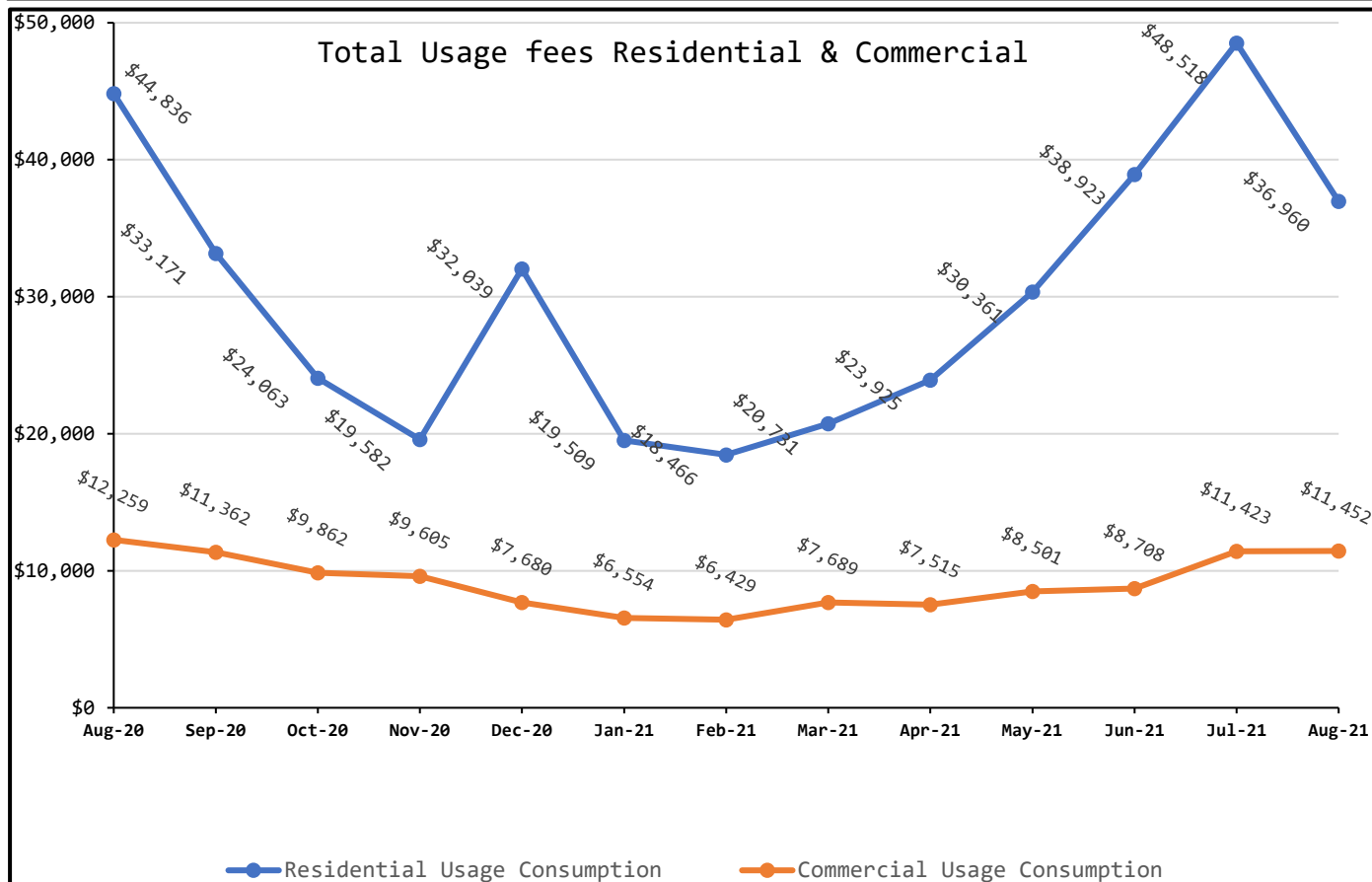


Total Base Rates Residential & Commercial

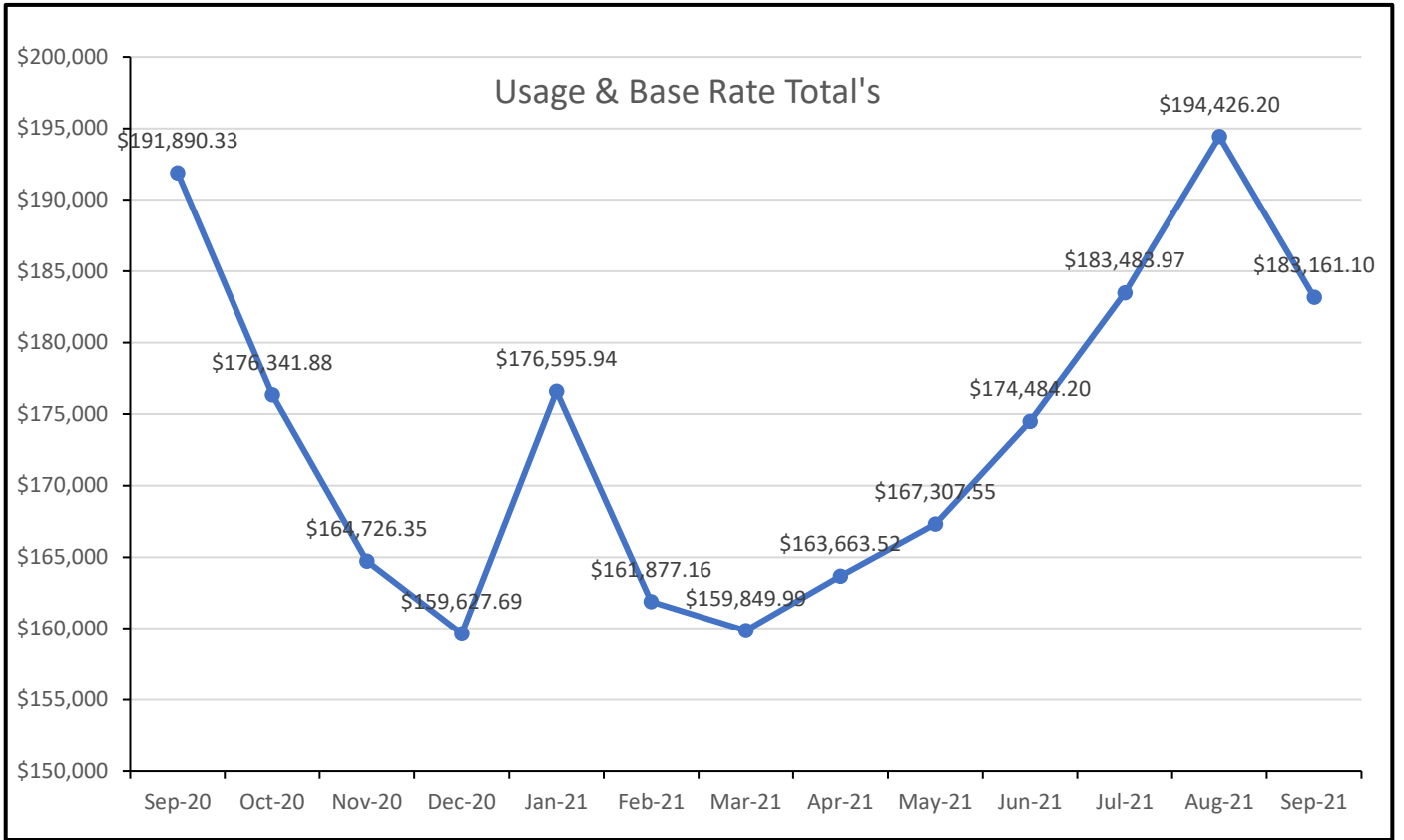


Residential Base Rate Total: Commercial Base Rate

Total Usage fees Residential & Commercial



Residential Usage Consumption Commercial Usage Consumption



Data Period	September 1 - 30, 2021	Operations Data
	Past Due Accounts	318 <i>ea</i>
	Properties with Liens	18 <i>ea</i>
	Accounts Locked Off	0 <i>ea</i>
	Water Main Locates	32 <i>ea</i>
	Water Quality Complaints	1 <i>ea</i>
	Customer Service Calls	76 <i>ea</i>
	Customer Valves Installed	2 <i>ea</i>
	New Services Installed	5 <i>ea</i>
	NBWD Office & Grounds Water Use:	<u>0.0135</u> <i>MG</i>

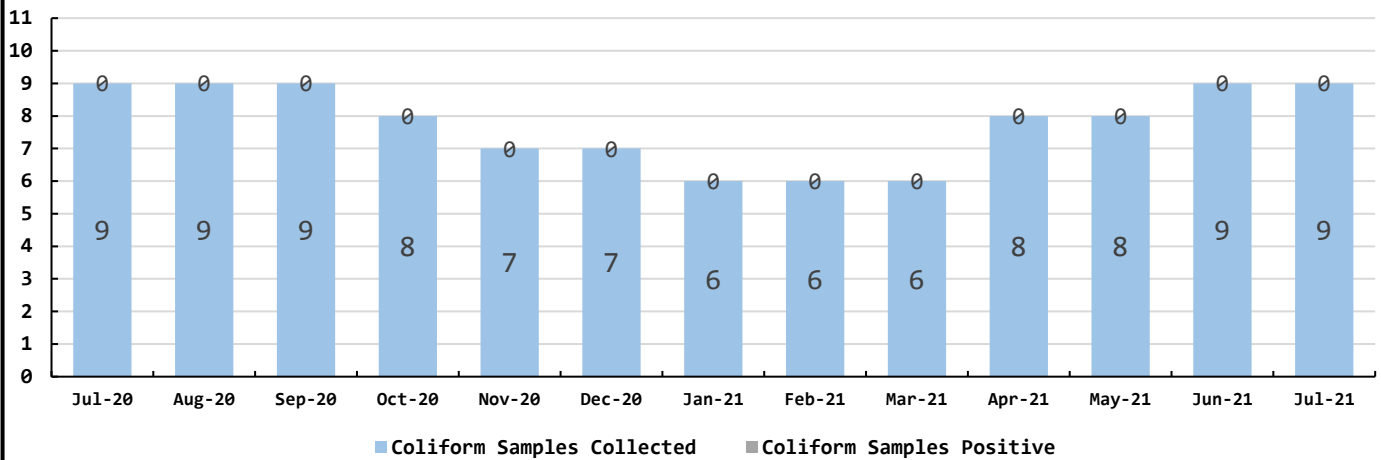
Data Period

September 1 - 30, 2021

Water Quality Data

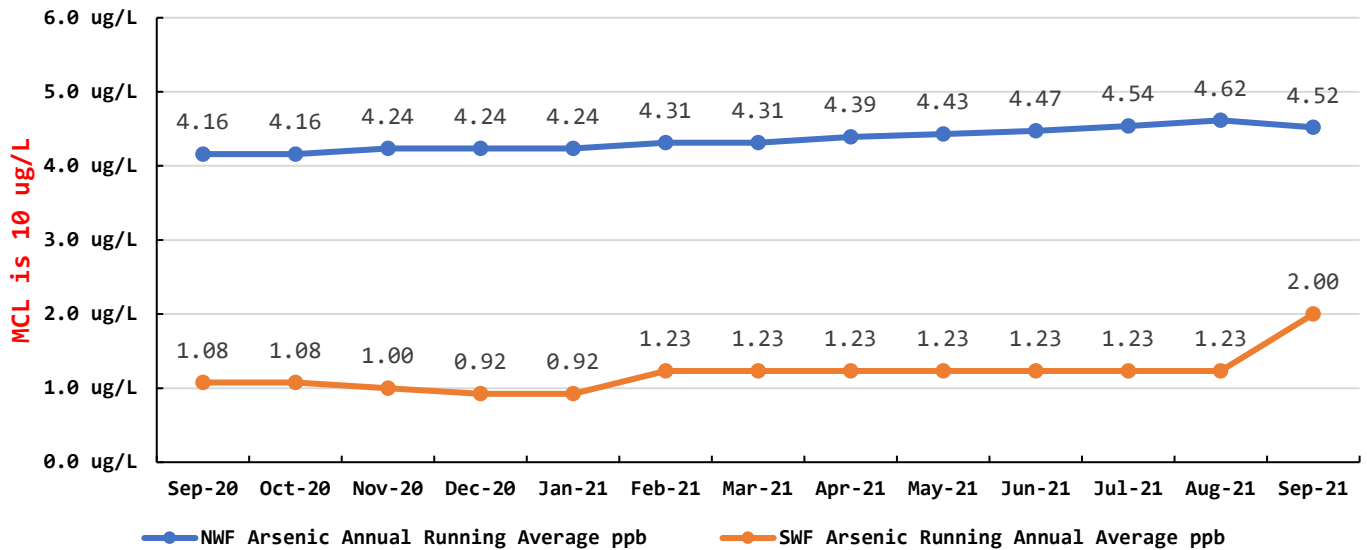
Coliform Samples Collected	9	ea
Coliform Samples Absent	9	ea
Coliform Samples Postive	0	ea
Coliform Sample Positive E.coli	0	ea
NWF Arsenic	6	ug/L
SWF Arsenic	1	ug/L
NWF Arsenic Annual Running Average	4.44	ug/L
SWF Arsenic Running Annual Average	1.17	ug/L

Coliform Bacteria Samples



Arsenic Monthly Annual Average

micrograms per liter (ug/L)



General Managers Report for October 2021:

- **Pilot test** is running.
Running a new filter media pyrolusite. 1 more round, then we will make a decision on which media to use.
- **3** new meter installations.
- 255th Line replacement is complete. Rst to Ridge. No more AC line.
- Questionnaires from Pst 245th to 240th, Received 13 of 25 questionnaires- 5 Yes & 8 No.
- **1 line break** – 4” mainline break east on Sandridge, also found hose bib that was directly connected to main (NOT metered). Crew disconnected it and repaired the break.
- **GIS work continues** - We have installed a new feature to the GIS that allows use to inventory our distribution lines.
12” – 4,406 ft, **8”**-14,237 ft, **6”**- 43,271 ft, **4”**- 42,009 ft, **3”**-2,908 ft, **2”**-159,604 ft, & **1”**-1,321 ft = 267,756 ft of **PVC**
47,869 ft of **8” & 6” AC pipe**
5923 ft of **6” & 2” STEEL pipe**. Which we have 321,548 ft of Distribution Mainline.
- **Hydrant flushing** - Started October 11th. Will continue flushing until complete.
- **South Well Field Communications** - Ordering from Graybar.
- **South Well Treatment Plant** – Has been shut off because of an actuating valve that is not working. Part has been ordered.
- **Projects that have been given to the Scott Topia of DOH** - include Loomis Lake, North Booster Station, & Mainline replacement from Bay Ave to 227th along the highway.
- Training to finally begin on the new Neptune meter reading equipment on October 20th here at the District Office.
- After flushing is completed, we will be finishing up the valve body installation at the NWF Treatment Plant.
- We are working on the Budget for 2022

September Work Orders

Read/Leave On	5
Turn Off/Lock – Customer Request	4
Turn Off/Lock – Non-Payment	0
Interrogate Meter	7
Locates	32
Unlock/Turn On	2
Test Backflow	1
Miscellaneous	3
Replace Meter Box	0
Low Pressure	1
Check Customer Valves	0
Dirty Water Complaints	1
Replace Meter	1
Install New Service	3
Assist Customer	3
Check For Leak	11
Re-Read Meter	0
Install Customer Control Valve	2
Total	76