

NORTH BEACH WATER DISTRICT

GENERAL MANAGERS REPORT

For November - 2021

Data Period	Well Field Data
<u>October 1, 2021</u> to <u>October 31, 2021</u>	NWF Master Meter: <u>7.5135</u> <i>mg</i>
	SWF Master Meter: <u>1.3288</u> <i>mg</i>
	Total Pumped to Plant: <u>8.8423</u> <i>MG</i>

Data Period	September 2021	Data:
<u>September 1, 2021</u> to <u>September 30, 2021</u>	NWF Master Meter: <u>6.6444</u> <i>mg</i>	
	SWF Master Meter: <u>3.3464</u> <i>mg</i>	
	Accounted for Water: <u>1.3979</u>	
	Total Water Pumped: <u>9.9908</u> <i>MG</i>	

Metering Period	Total Water Sold :	
<u>September 1, 2021</u> to <u>September 30, 2021</u>	<u>7.6890</u>	<i>MG</i>

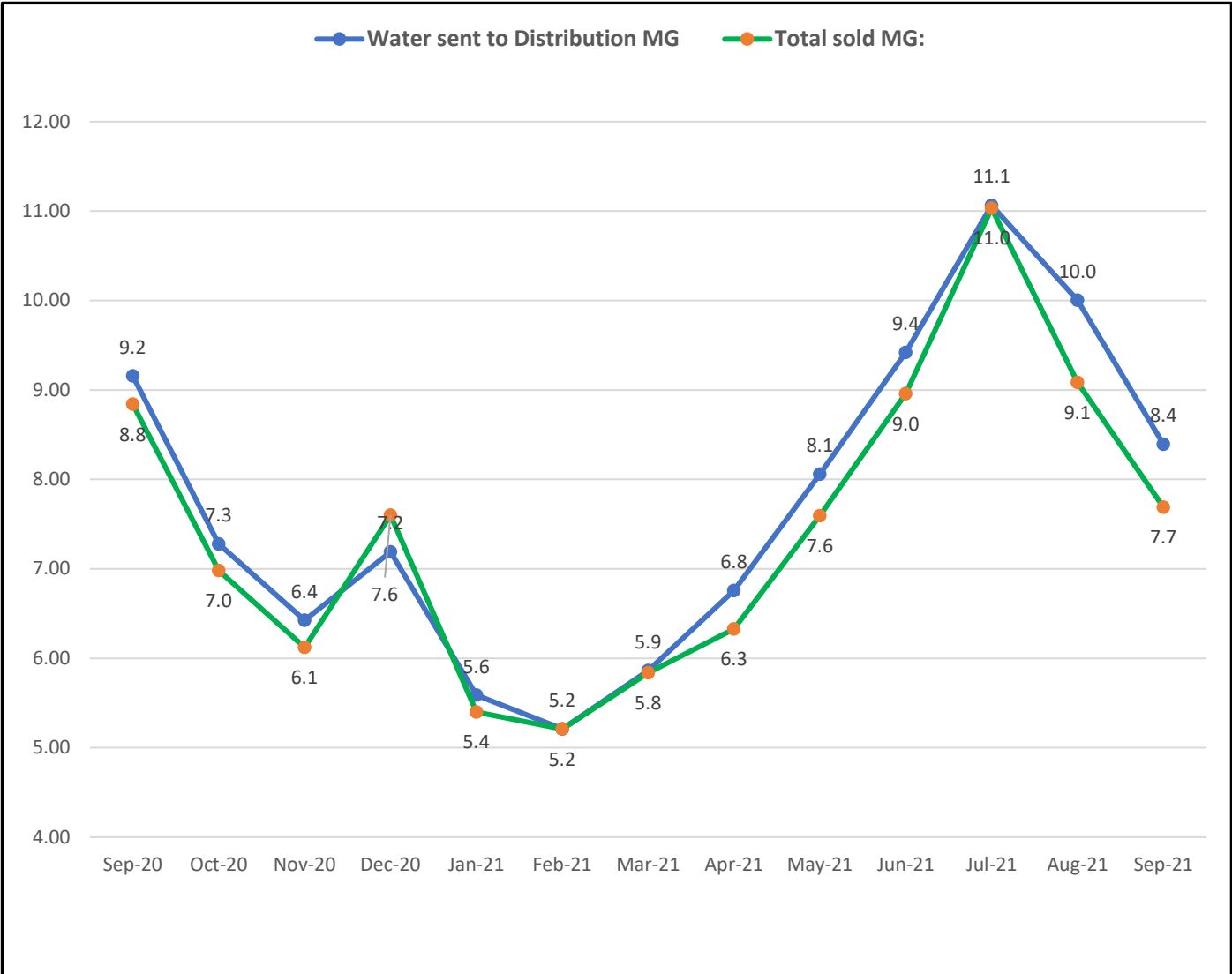
September's Accounted for Water:		
NWF Backwash :	<u>0.2575</u>	<i>mg</i>
SWF Backwash :	<u>0.7303</u>	<i>mg</i>
Distribution Flushing, Fire Dept, Pac Co & Waterline Leak Repair's:	<u>0.4003</u>	<i>mg</i>
NBWD use NWF & SWF:	<u>0.0098</u>	<i>mg</i>
Total Accounted for Water:	<u>1.3979</u>	<i>MG</i>

Total Water Treated :	<u>9.9908</u>	<i>MG</i>
Accounted for Water Used :	<u>1.3979</u>	<i>MG</i>
Water Sent to Distribution :	<u>8.3930</u>	<i>MG</i>
Water Sold :	<u>7.6890</u>	<i>MG</i>
Distribution Leakage :	<u>0.7040</u>	<i>MG</i>
Percent of Unaccounted for Water :	<u>8.39</u>	%

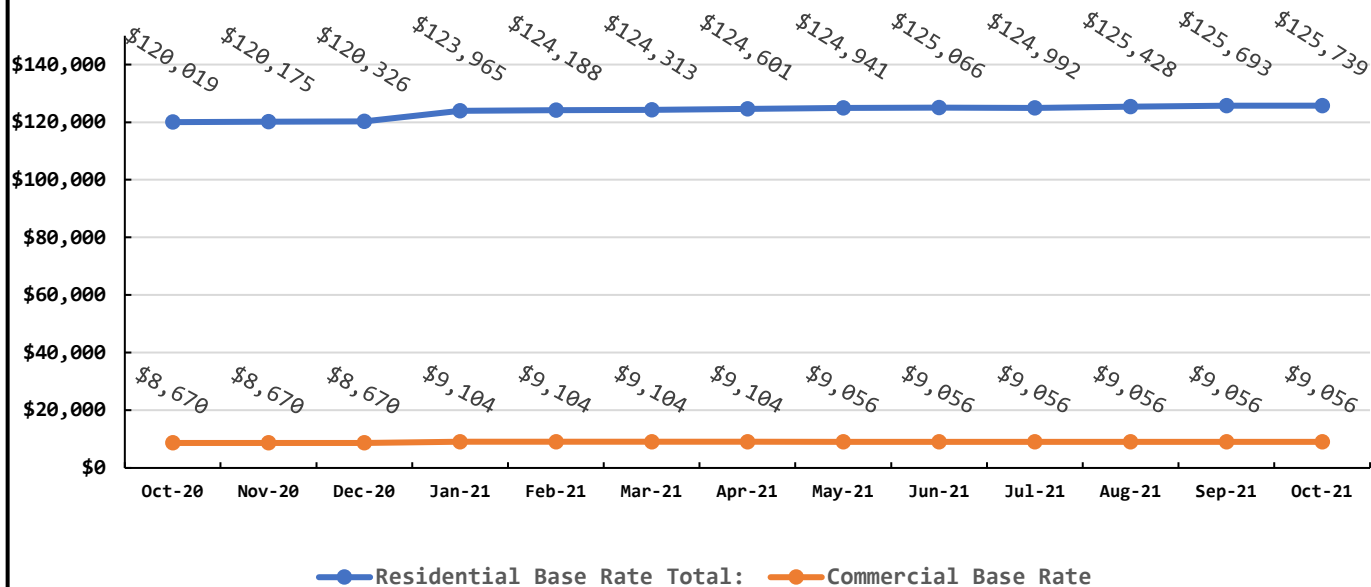
Data Period	September 1 - 30, 2021	Booster System Data
--------------------	-------------------------------	----------------------------

North Wellfield Booster High gpm :	852	<i>gpm</i>
North Wellfield Booster Low gpm :	0	<i>gpm</i>
North Wellfield Booster Average gpm :	159	<i>gpm</i>
North Wellfield High psi:	69	<i>psi</i>
North Wellfield Low psi:	37	<i>psi</i>
North Wellfield Average psi:	59	<i>psi</i>
Total MG Booster pumped to Distribution at NWF:	7.0850	<i>MG</i>
Total MG Booster pumped to Distribution at SWF:	1.1553	<i>MG</i>
Total Booster Pumped to Distribution :	8.2403	<i>MG</i>
South Wellfield Booster High gpm:	1,406	<i>gpm</i>
South Wellfield Booster Low gpm:	0	<i>gpm</i>
South Wellfield Booster Average gpm:	24	<i>gpm</i>
South Wellfield Booster High psi:	72	<i>psi</i>
South Wellfield Booster Low psi:	0	<i>psi</i>
South Wellfield Booster Average psi:	56	<i>psi</i>
245th Distribution Pressure Readings per Month:	3,568	
Highest	69	<i>psi</i>
Lowest	42	<i>psi</i>
Average	61	<i>psi</i>

Data Period			Accounts Data	
October 1 - 31st, 2021,			Residential Base Rates	\$125,739.19 \$
September 1 - 30, 2021			Residential Consumption	\$29,942.25 \$
October 1 - 31st, 2021			Commercial Base Rate	\$9,056.44 \$
September 1 - 30, 2021			Commercial Consumption	\$9,447.48 \$
			Fire Flow Rate	\$1,163.31 \$
New Residential Accounts	2,715	ea	Backflow Assembly Rate	\$619.16 \$
Commercial Accounts	99	ea	Contract Reimbursement	0 \$
Fire Flow Accounts	4	ea	Other Fees & Charges	\$4,149.75 \$
Backflow Accounts	36	ea	Total:	\$180,117.58 \$

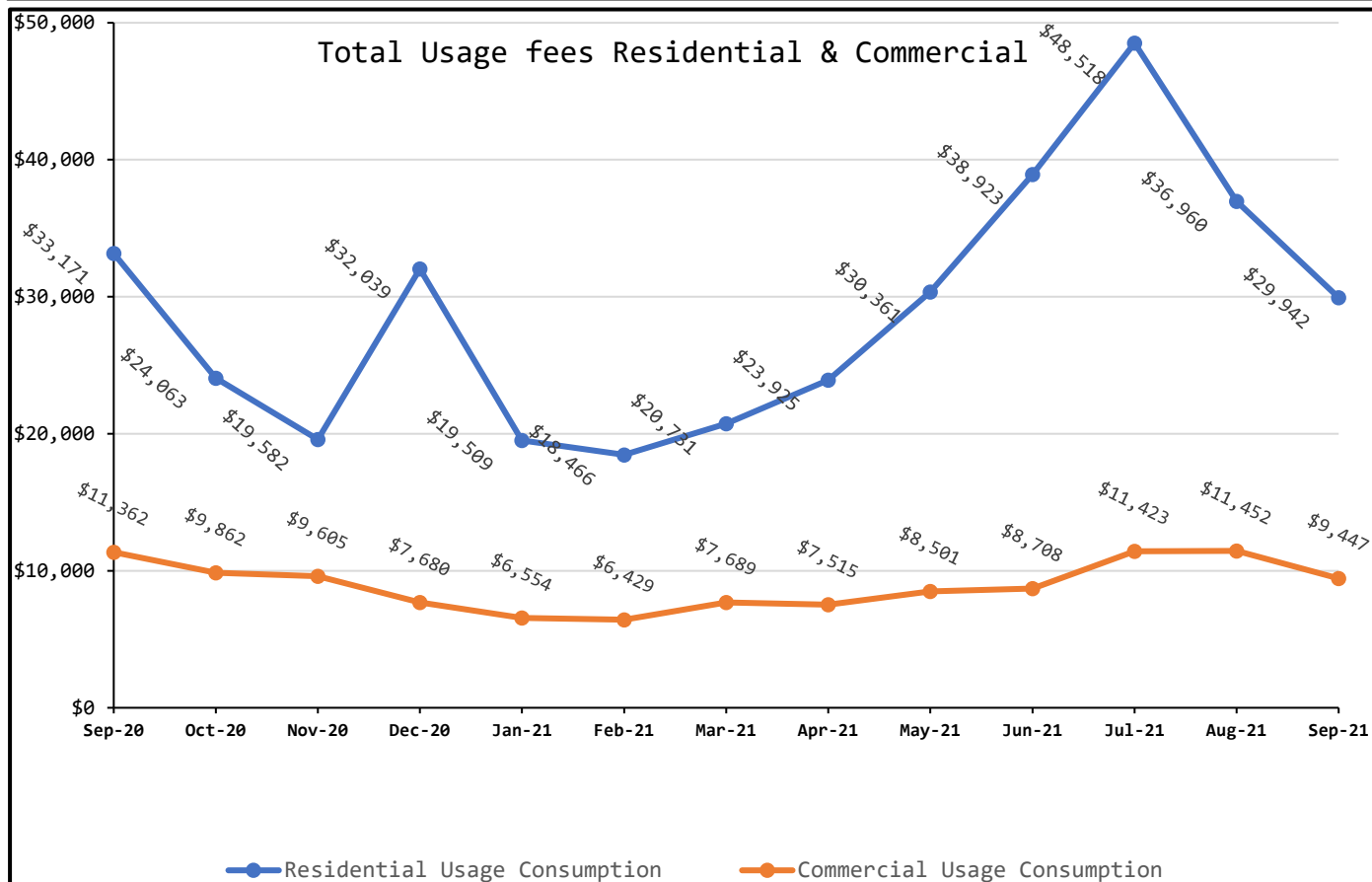


Total Base Rates Residential & Commercial

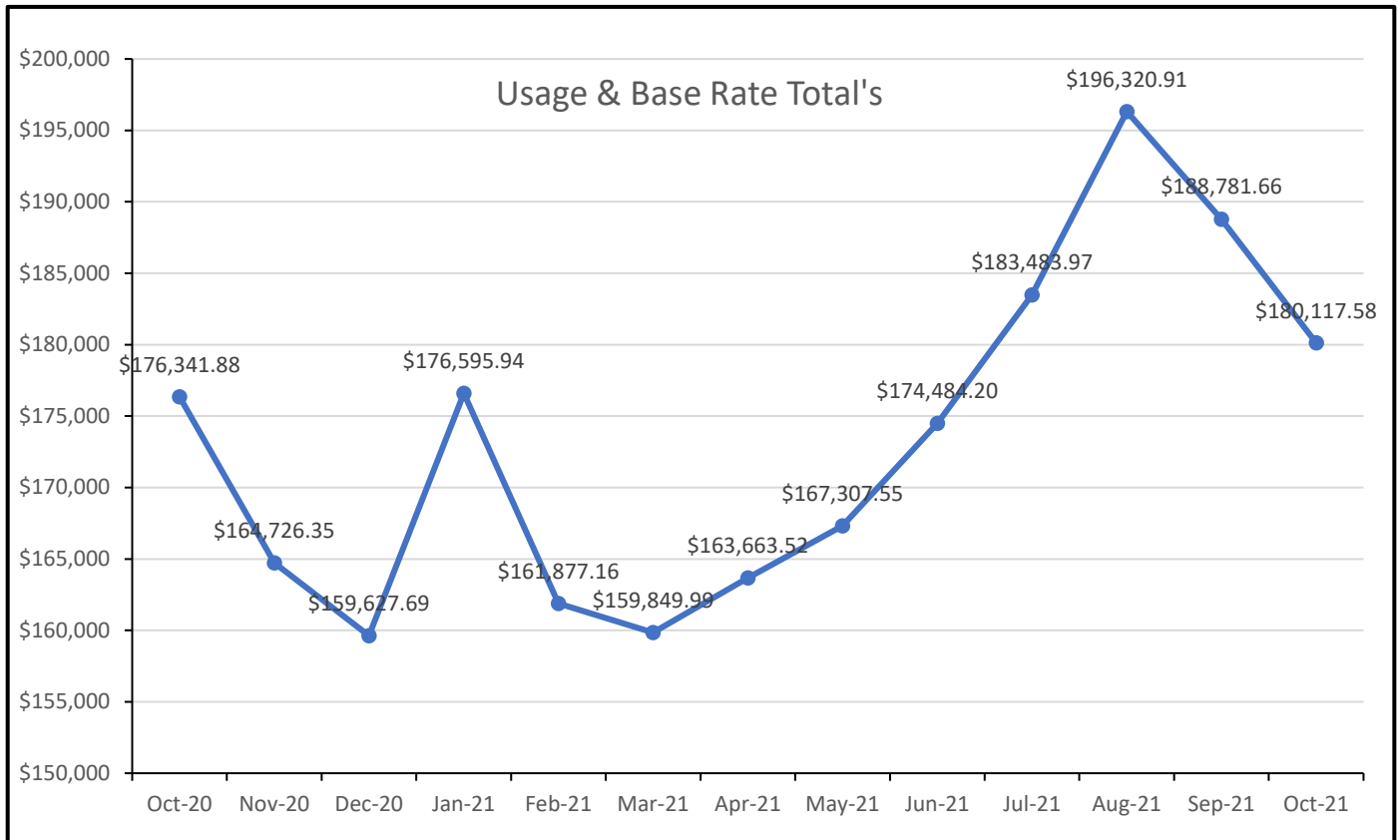


Residential Base Rate Total: Commercial Base Rate

Total Usage fees Residential & Commercial



Residential Usage Consumption Commercial Usage Consumption



Data Period	October 1 - 31, 2021	Operations Data	
	Past Due Accounts	309	<i>ea</i>
	Properties with Liens	18	<i>ea</i>
	Accounts Locked Off	15	<i>ea</i>
	Water Main Locates	27	<i>ea</i>
	Water Quality Complaints	0	<i>ea</i>
	Customer Service Calls	55	<i>ea</i>
	Customer Valves Installed	1	<i>ea</i>
	New Services Installed	1	<i>ea</i>
	NBWD Office & Grounds Water Use:	0.0098	<i>MG</i>

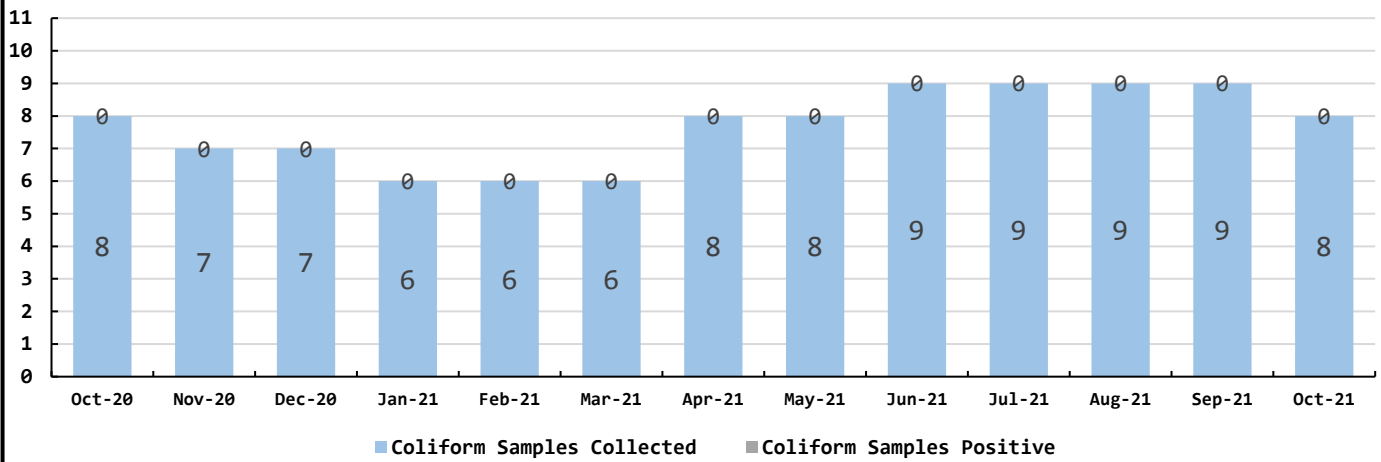
Data Period

October 1 - 31, 2021

Water Quality Data

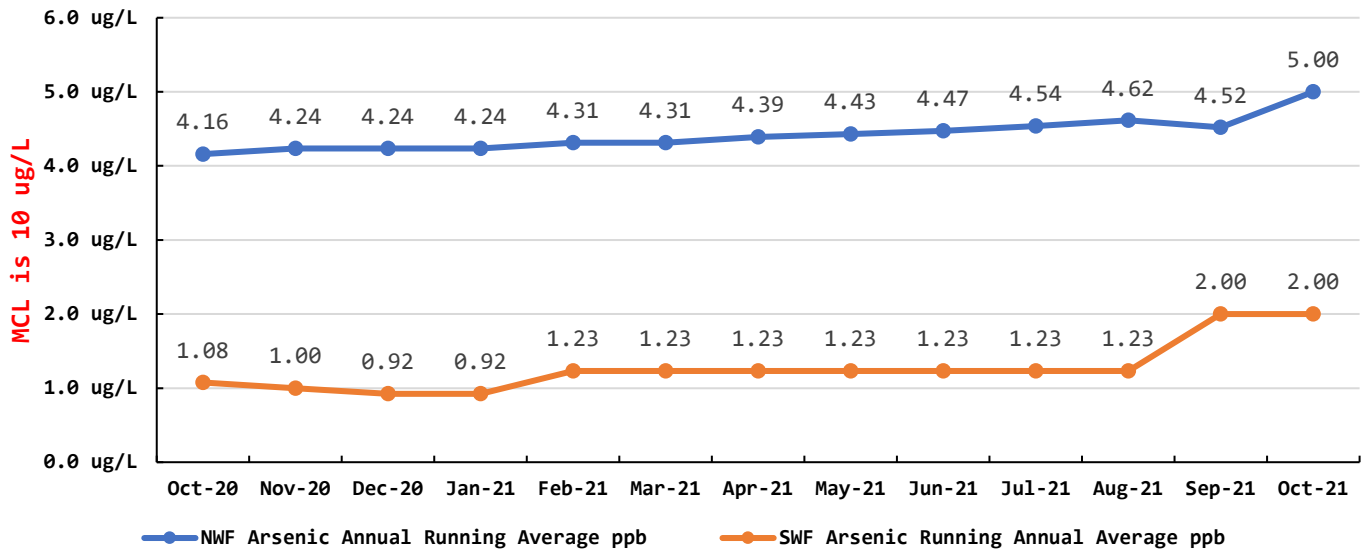
Coliform Samples Collected	8	ea
Coliform Samples Absent	8	ea
Coliform Samples Postive	0	ea
Coliform Sample Positive E.coli	0	ea
NWF Arsenic	5	ug/L
SWF Arsenic	2	ug/L
NWF Arsenic Annual Running Average	4.38	ug/L
SWF Arsenic Running Annual Average	1.18	ug/L

Coliform Bacteria Samples



Arsenic Monthly Annual Average

micrograms per liter (ug/L)



October Work Orders

Read/Leave On	10
Turn Off/Lock – Customer Request	2
Turn Off/Lock – Non-Payment	18
Interrogate Meter	1
Locates	27
Unlock/Turn On	14
Test Backflow	1
Miscellaneous	6
Replace Meter Box	0
Low Pressure	0
Check Customer Valves	0
Dirty Water Complaints	0
Replace Meter	1
Install New Service	1
Assist Customer	2
Check For Leak	8
Re-Read Meter	1
Install Customer Control Valve	1
Total	93