

NORTH BEACH WATER DISTRICT GENERAL MANAGERS REPORT

For April's Meeting - 2022

March Well Field Output

<u>March 1, 2022</u>	to	<u>March 31, 2022</u>	NWF Master Meter:	<u>3.2664</u>	<i>mg</i>
			SWF Master Meter:	<u>5.1770</u>	<i>mg</i>
			Total Pumped to Plant:	8.4434	MG

February Water Plant Production	Data:
--	--------------

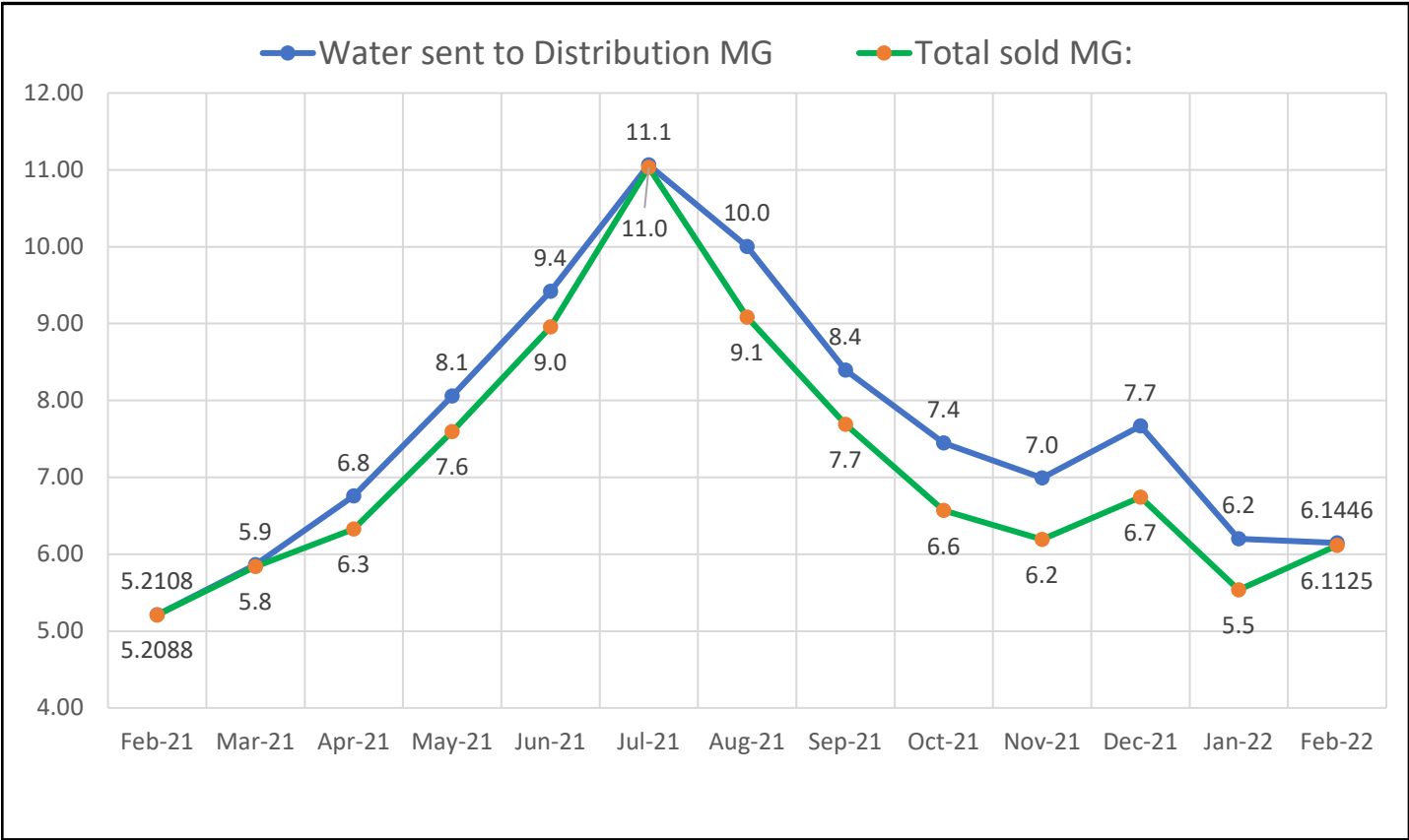
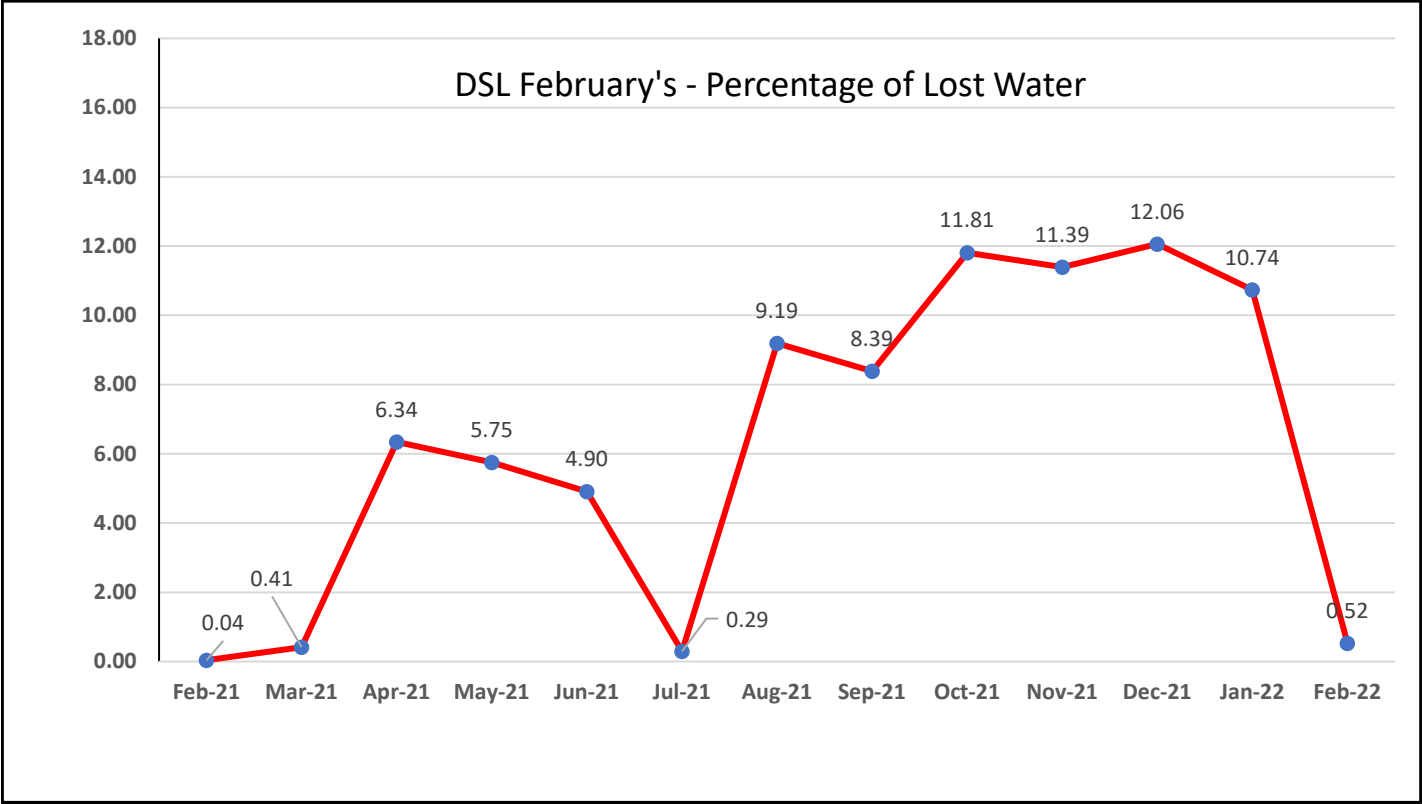
Data Period					
<u>February 1, 2022</u>	to	<u>February 28, 2022</u>	NWF Master Meter:	<u>5.9365</u>	<i>mg</i>
			SWF Master Meter:	<u>1.7097</u>	<i>mg</i>
			Accounted for Water:	<u>1.5016</u>	
			Total Water Pumped:	7.6462	MG

Metering Period

<u>February 1, 2022</u>	to	<u>February 28, 2022</u>	Total Water Sold :	<u>6.1125</u>	<i>MG</i>
-------------------------	----	--------------------------	--------------------	---------------	-----------

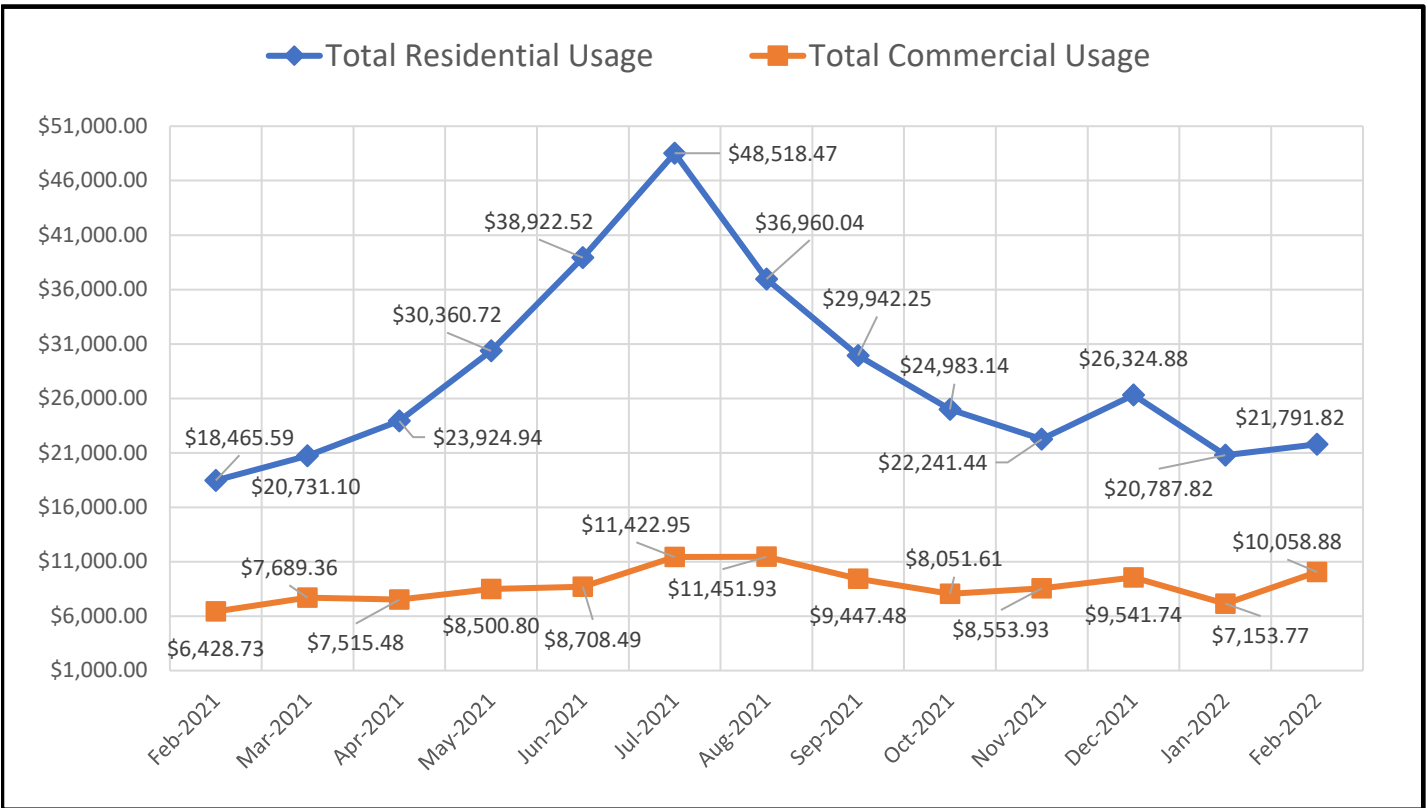
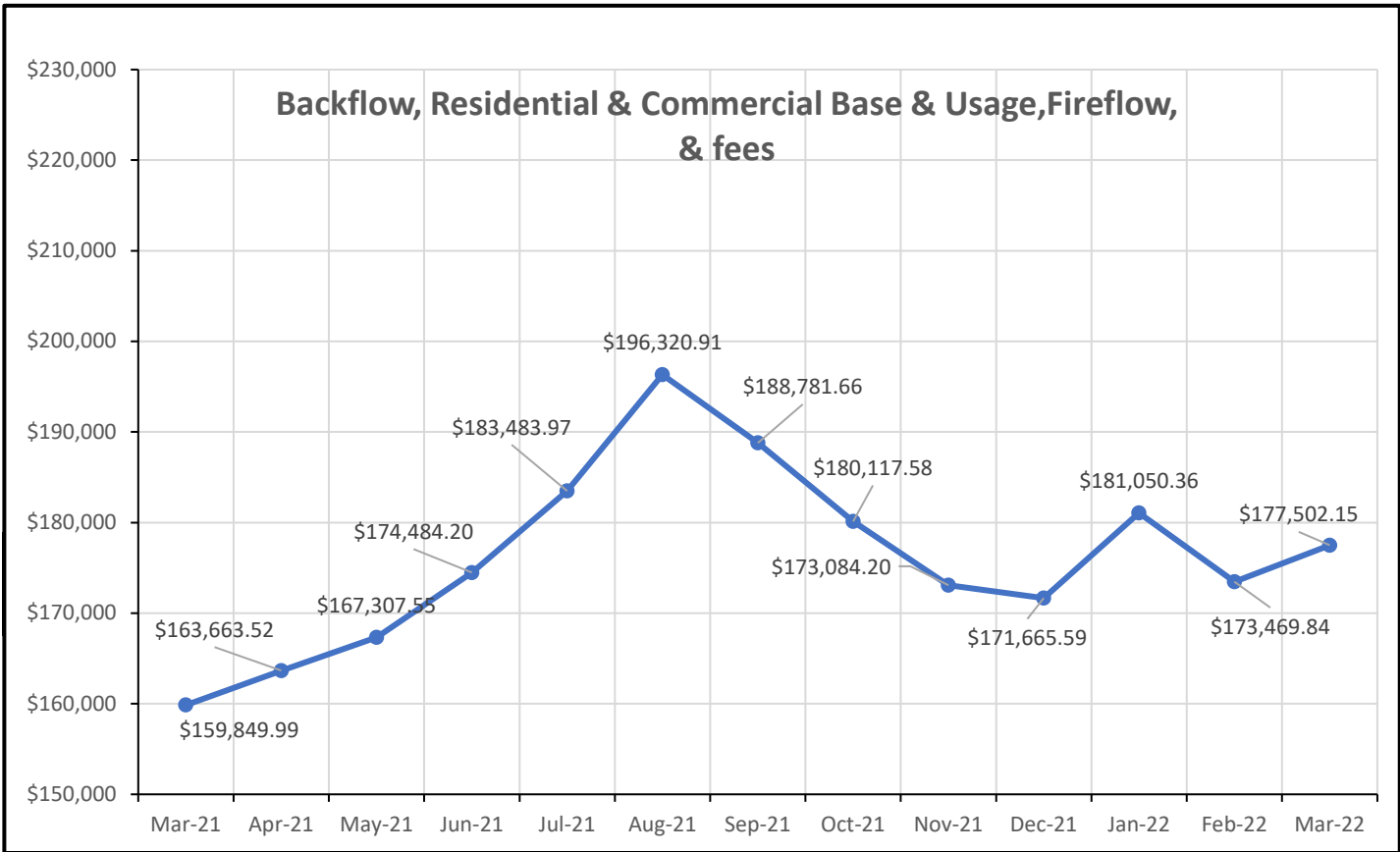
February Accounted for Water:

	NWF Backwash :	<u>0.3619</u>	<i>mg</i>
	SWF Backwash :	<u>0.1619</u>	<i>mg</i>
Distribution Flushing, Fire Dept, Pac Co & Waterline Leak Repair's:		<u>0.3495</u>	<i>mg</i>
	NBWD use NWF & SWF:	<u>0.6283</u>	<i>mg</i>
	Total Accounted for Water:	1.5016	MG
	Total Water Treated :	7.6462	MG
	Accounted for Water Used :	1.5016	MG
	Water Sent to Distribution :	6.1446	MG
	Water Sold :	6.1125	MG
	Distribution Leakage :	0.0321	MG
	Percent of Unaccounted for Water :	0.52	%

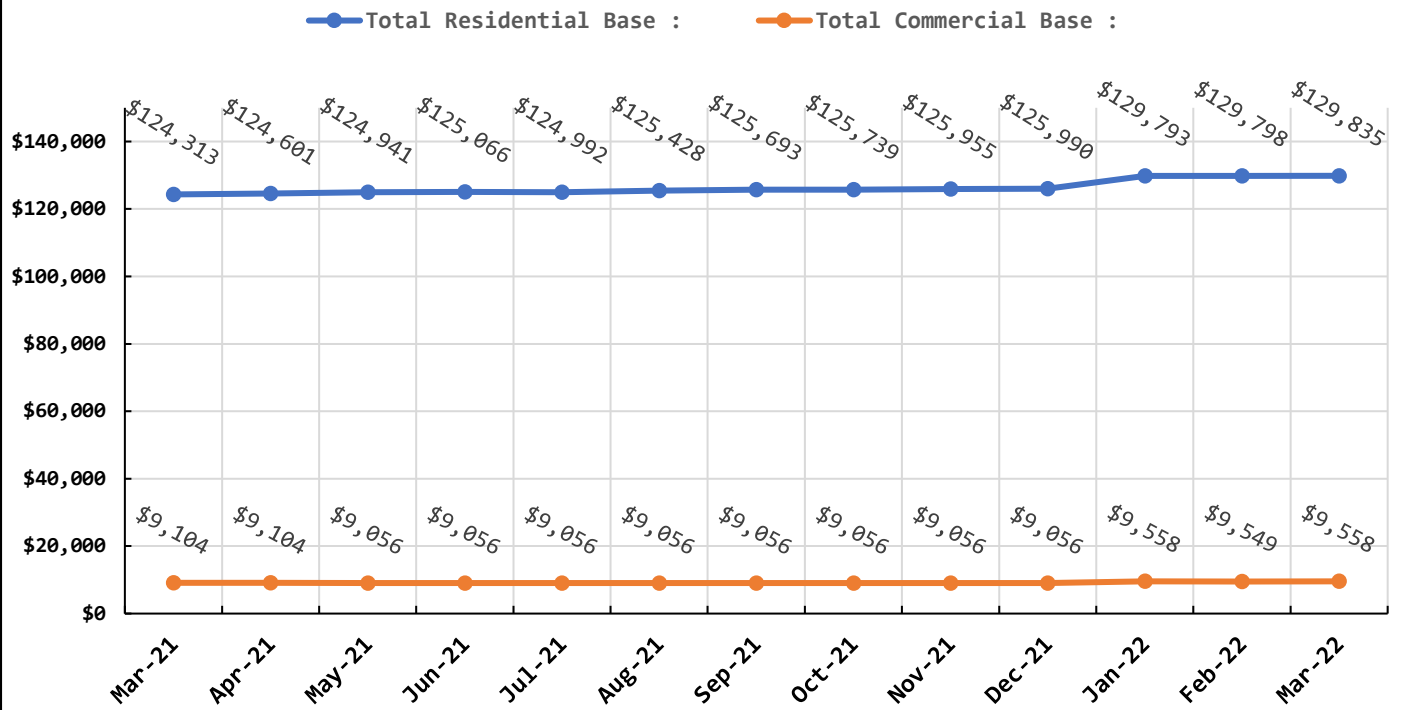


Data Period	March 1 - 31, 2022		Booster System Data	
	North Wellfield Booster High GPM :		1,141	<i>gpm</i>
	North Wellfield Booster Average GPM :		65	<i>gpm</i>
	North Wellfield High psi:		69	<i>psi</i>
	North Wellfield Average psi:		60	<i>psi</i>
	Total MG Booster pumped to Distribution at NWF:		2.9141	<i>MG</i>
	Total MG Booster pumped to Distribution at SWF:		4.7931	<i>MG</i>
	Total Booster Pumped to Distribution :		7.7072	<i>MG</i>
	South Wellfield Booster High gpm:		1,487	<i>gpm</i>
	South Wellfield Booster Average gpm:		110	<i>gpm</i>
	South Wellfield Booster High psi:		71	<i>psi</i>
	South Wellfield Booster Average psi:		61	<i>psi</i>
	245th Distribution Pressure Readings :			
		Highest	71	<i>psi</i>
		Lowest	27	<i>psi</i>
		Average	59	<i>psi</i>

Data Period			Accounts Data	
March 1 - 31, 2022			Residential Base	\$129,834.63 \$
February 1 - 28, 2022			Residential Usage	\$21,791.82 \$
March 1 - 31, 2022			Commercial Base	\$9,558.35 \$
February 1 - 28, 2022			Commercial Usage	\$10,058.88 \$
Residential Accounts	2,719	<i>ea</i>	Fire Flow Rate	\$1,221.47 \$
Commercial Accounts	100	<i>ea</i>	Backflow Assembly Rate	\$357.95 \$
Fire Flow Accounts	4	<i>ea</i>	Contract Reimbursement	0 \$
Backflow Accounts	34	<i>ea</i>	Other Fees & Charges	\$4,679.05 \$
			Total:	\$177,502.15 \$



Residential & Commercial Base



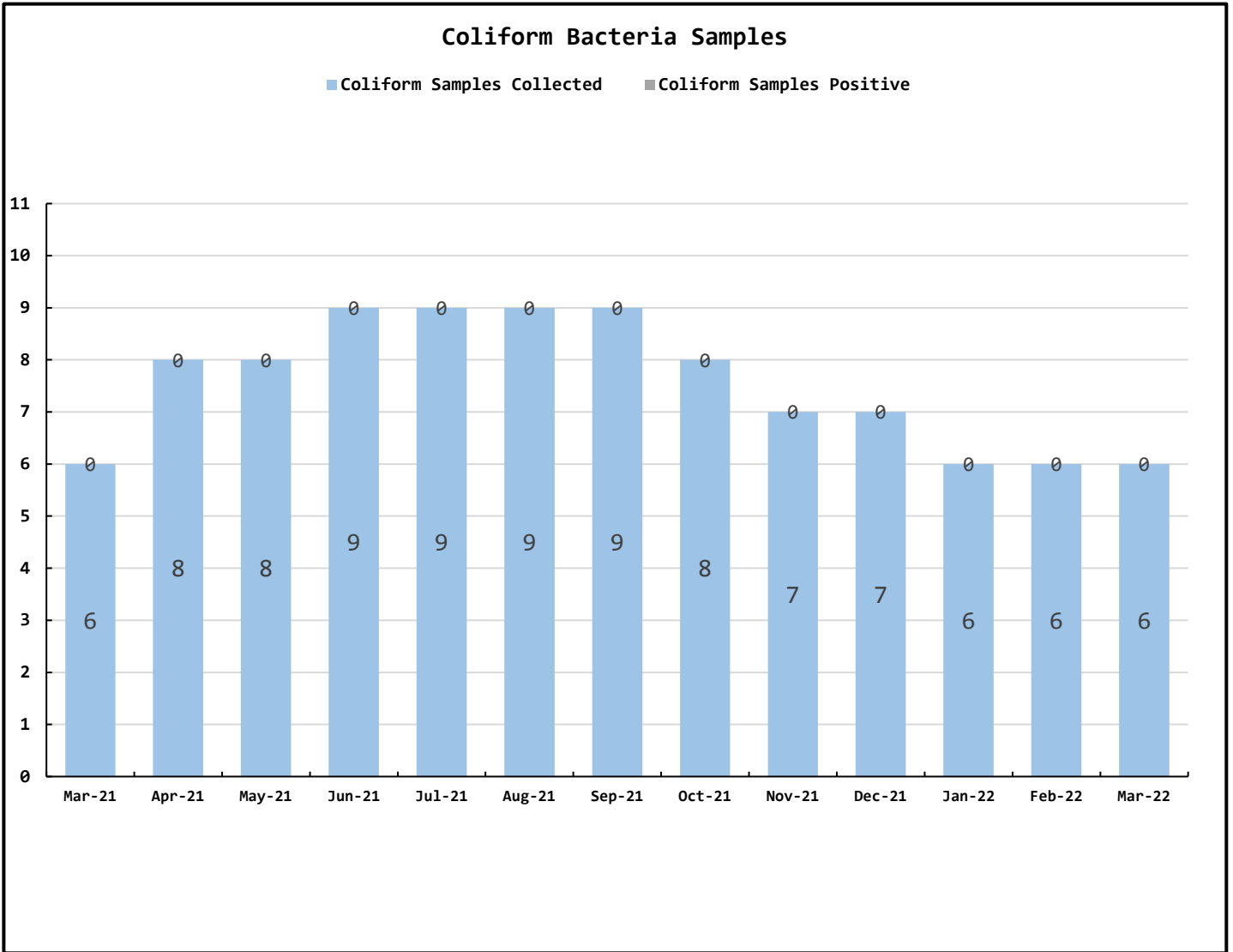
Data Period

March 1 - 31, 2022

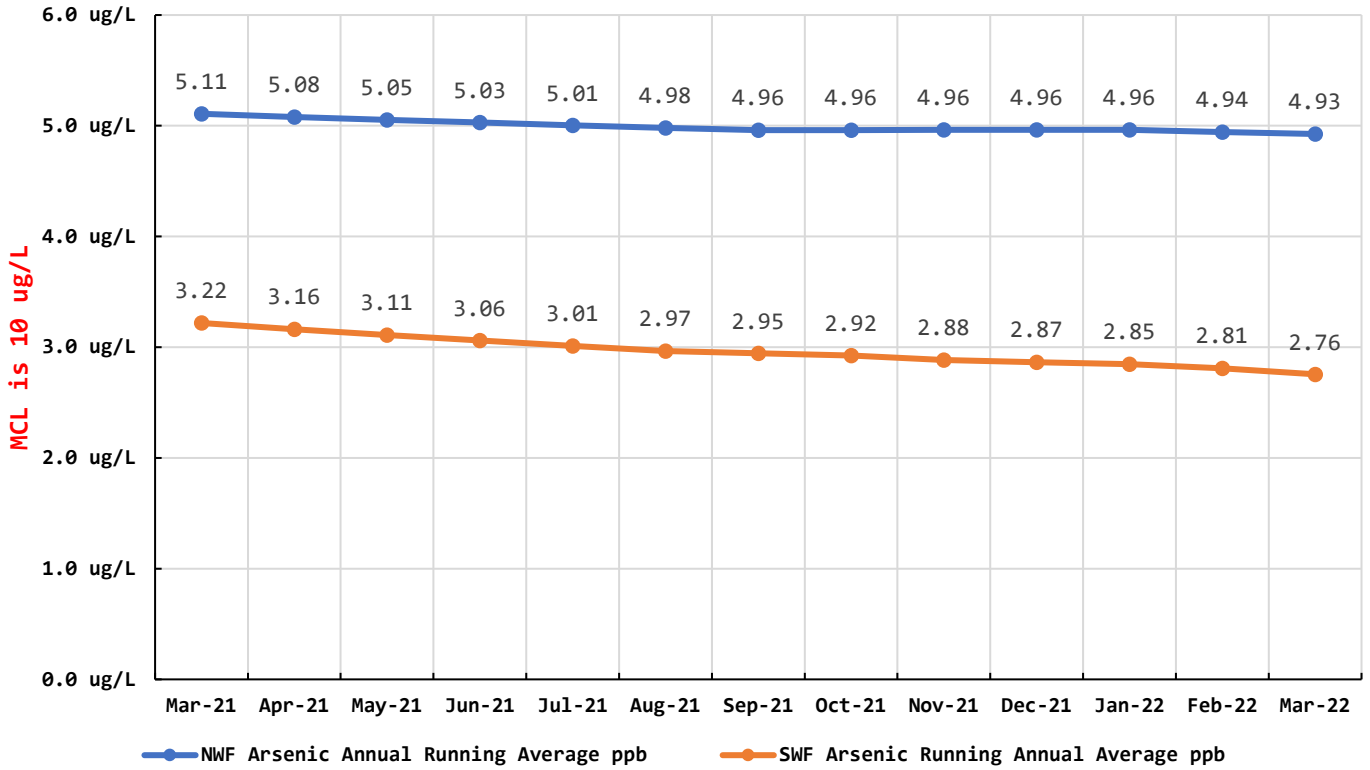
Operations Data

Past Due Accounts	248	<i>ea</i>
Properties with Liens	27	<i>ea</i>
Accounts Locked Off	4	<i>ea</i>
Water Main Locates	41	<i>ea</i>
Water Quality Complaints	2	<i>ea</i>
Customer Service Calls	46	<i>ea</i>
Customer Valves Installed	1	<i>ea</i>
New Services Installed	0	<i>ea</i>
NBWD Office & Grounds Water Use:	0.6283	<i>MG</i>

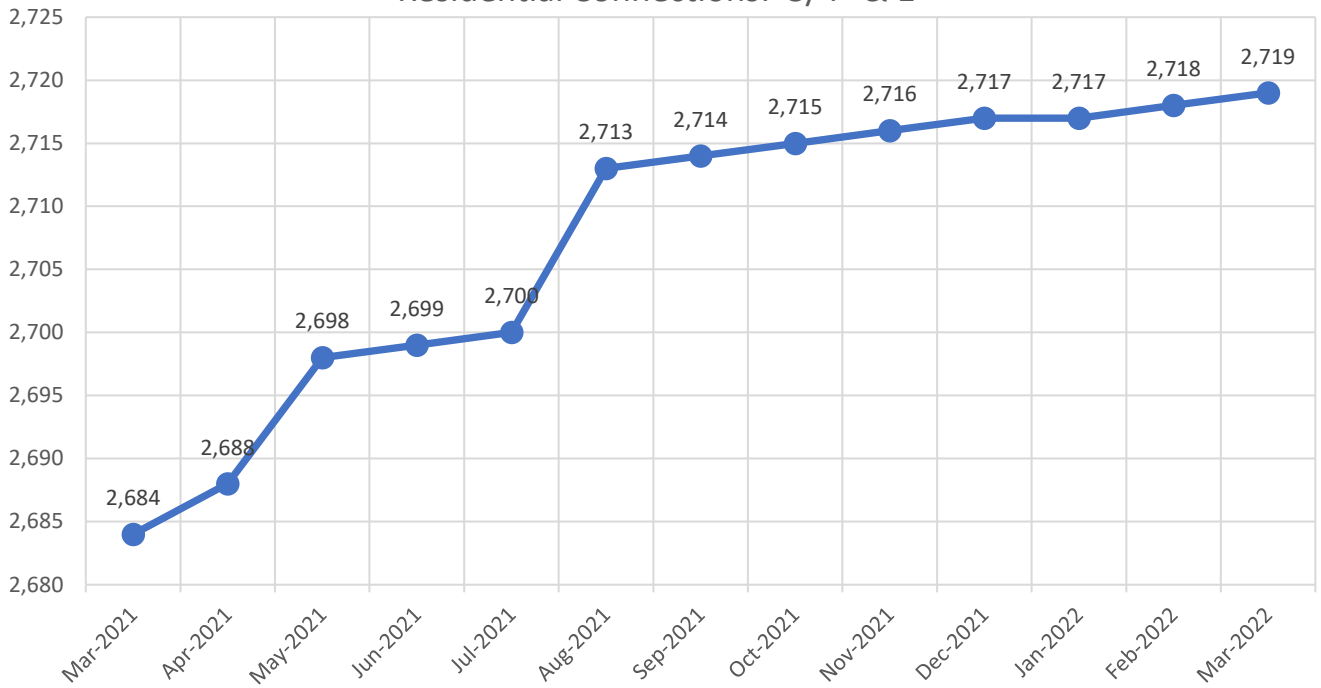
Data Period	March 1 - 31, 2022		Water Quality Data	
	Coliform Samples Collected	6	<i>ea</i>	
	Coliform Samples Absent	6	<i>ea</i>	
	Coliform Samples Postive	0	<i>ea</i>	
	Coliform Sample Positive E.coli	0	<i>ea</i>	
	NWF Arsenic	4	<i>ug/L</i>	
	SWF Arsenic	0	<i>ug/L</i>	
	NWF Arsenic Annual Running Average	4.93	<i>ug/L</i>	
	SWF Arsenic Running Annual Average	2.76	<i>ug/L</i>	



Arsenic Monthly Annual Average micrograms per liter (ug/L)



Residential Connections: 3/4" & 1"



General Managers Report for April 2022:

- Inland electric spliced fiber at the South Water Plant and Wiegardt Well Field. We have been running with it now for 2 weeks.
- Generator for the NWF, Plant, & Office – Had PUD send me our total use by the month for 2 years. We have 2 meters located here that the PUD reads. Had Inland electric look at this data to start with. We will have to go to bid on this but just wanted to know what size they had spec out. L will also pass it by G&O.
- North Water Treatment Plants new heads have been installed. The time it was down we took the check valves out, found sand, **a lot** of sand so we replaced the 90-degree elbow with a (T) and plumbed it outside so we could run each well by itself to clean the feed lines to the treatment vessels. We then racked them by turning them off and on to create a wave action and this cleaned them up. (Talked with Robinson & Noble before doing this). We then did a white bucket test on them. They cleaned up well, we will talk about this.
- We took the caps off the contact vessels, and they had Manganese and Iron coatings on the walls about a ½” to ¾” thick around the insides, top to bottom. Crew pressure washed each vessel until clean. 3 of these had 1 to 2 feet of sand in them. All were cleaned. Raw inlet pipes were next to inspect. Took the blind flanges off them and was surprised they were almost plugged off. We rig up plumbing to outside and flushed them all out. Next, we will pig the lines coming from the wells to remove the iron bacteria slime.
- Filter to waste valves at the South Water Treatment Plant have been installed and we are waiting on TAG to get here to install them to the PLC.
- Zenza is taking up the crew’s time with locates. I talked with there field supervisor on Wednesday to get some things straightened out. I have his number as he will be in the area for the rest of the project. They are going to be here for 3 to 4 years.
- Found our mainline in the middle of someone’s property. It is located northwest of 245th & W lane. They were in the process of installing a septic system and came across it. We will be moving this to the right of way. About 400 ft of 2” line.
- Letters to the customers to sign up with the County for a call when water mains break, or other emergencies have gone out in our March billing.
- Nitrate samples go out this month from the North Well Field.
- New pump at the north booster station stopped pumping. Pump tech come down to check on it. The pump is still under warranty. Also, the welded reducing flanges on pump #2 started leaking. After inspection we had them welded. But they are worn out and I am looking for cast reducing flanges to replace both of pump 1 & 2’s fittings.

March Work Orders

Read/Leave On	5
Turn Off/Lock – Customer Request	8
Turn Off/Lock – Non-Payment	4
Interrogate Meter	3
Locates	41
Unlock/Turn On	8
Test Backflow	5
Miscellaneous	7
Replace Meter Box	0
Low Pressure	0
Check Customer Valves	0
Dirty Water Complaints	2
Replace Meter	3
Install New Service	1
Assist Customer	0
Check For Leak	3
Re-Read Meter	2
Install Customer Control Valve	1
Total	93