

NORTH BEACH WATER DISTRICT GENERAL MANAGERS REPORT

For Junes's Meeting - 2022

Well Field Output

<u>May 1, 2022</u>	to	<u>May 31, 2022</u>	NWF Master Meter:	<u>3.2664</u>	<i>mg</i>
			SWF Master Meter:	<u>5.1770</u>	<i>mg</i>
			Total Pumped to Plant:	8.4434	MG

April Water Plant Production

Data:

Data Period

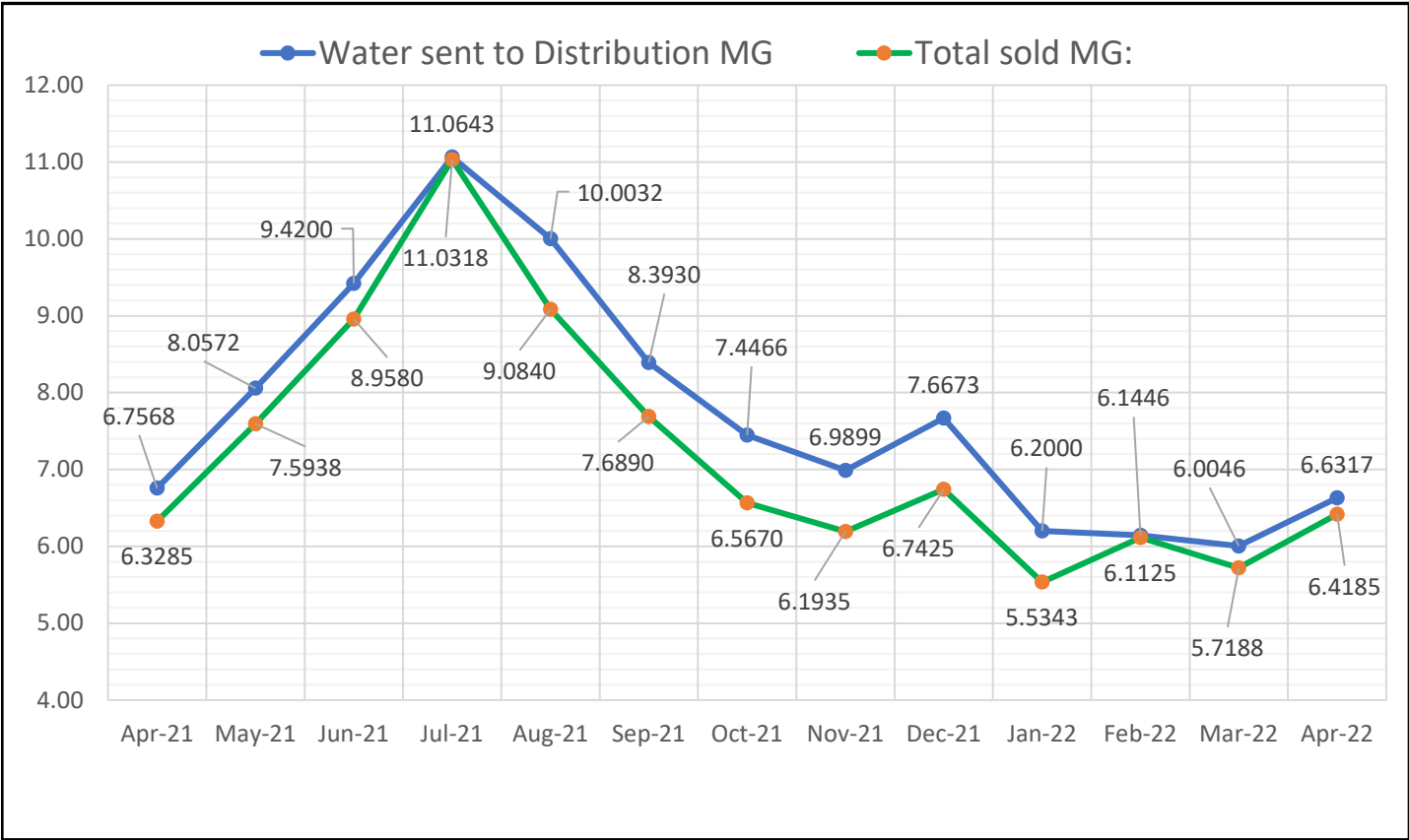
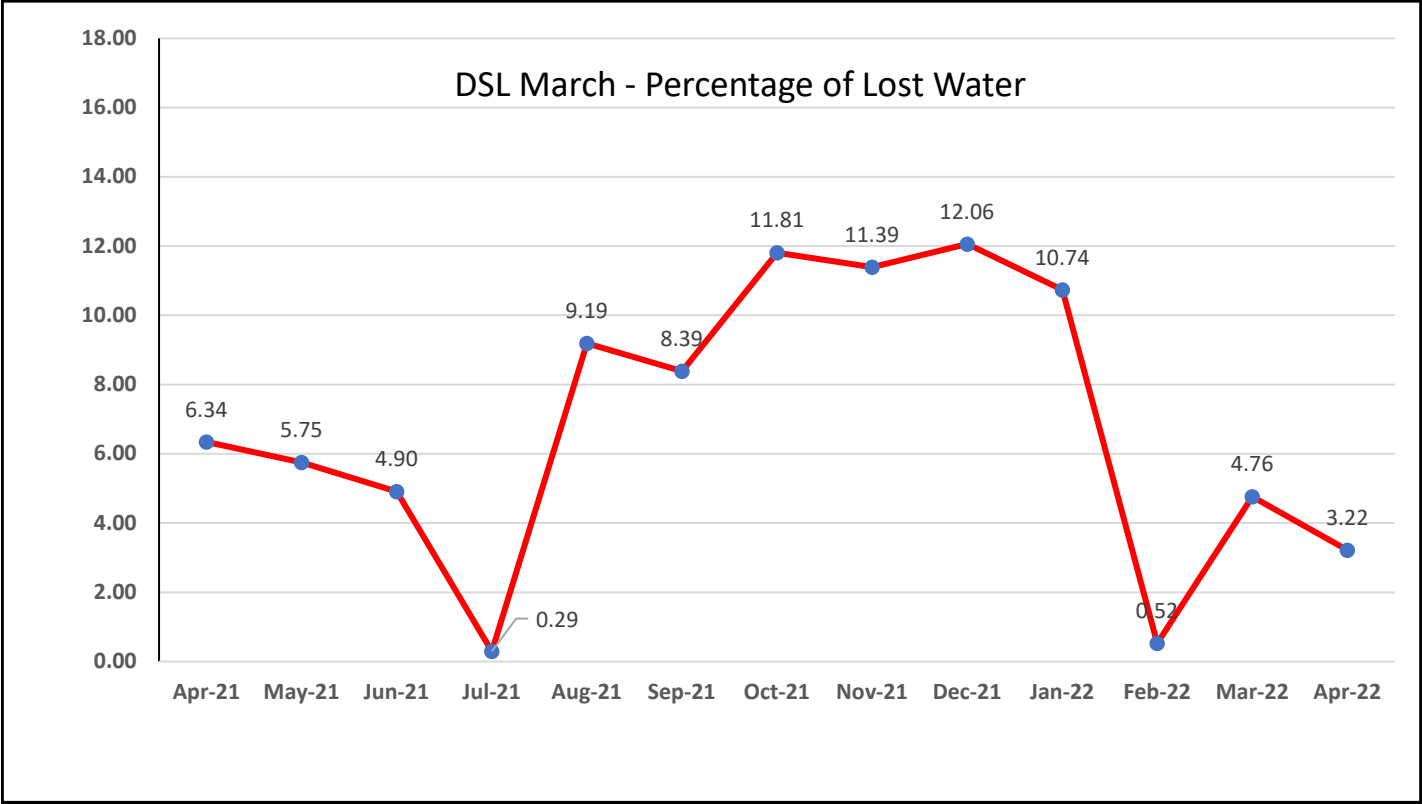
<u>April 1, 2022</u>	to	<u>April 30, 2022</u>	NWF Master Meter:	<u>2.7915</u>	<i>mg</i>
			SWF Master Meter:	<u>5.5627</u>	<i>mg</i>
			Accounted for Water:	<u>1.7225</u>	
			Total Water Pumped:	8.3542	MG

Metering Period

<u>April 1, 2022</u>	to	<u>April 30, 2022</u>	Total Water Sold :	<u>6.4185</u>	<i>MG</i>
----------------------	----	-----------------------	--------------------	---------------	-----------

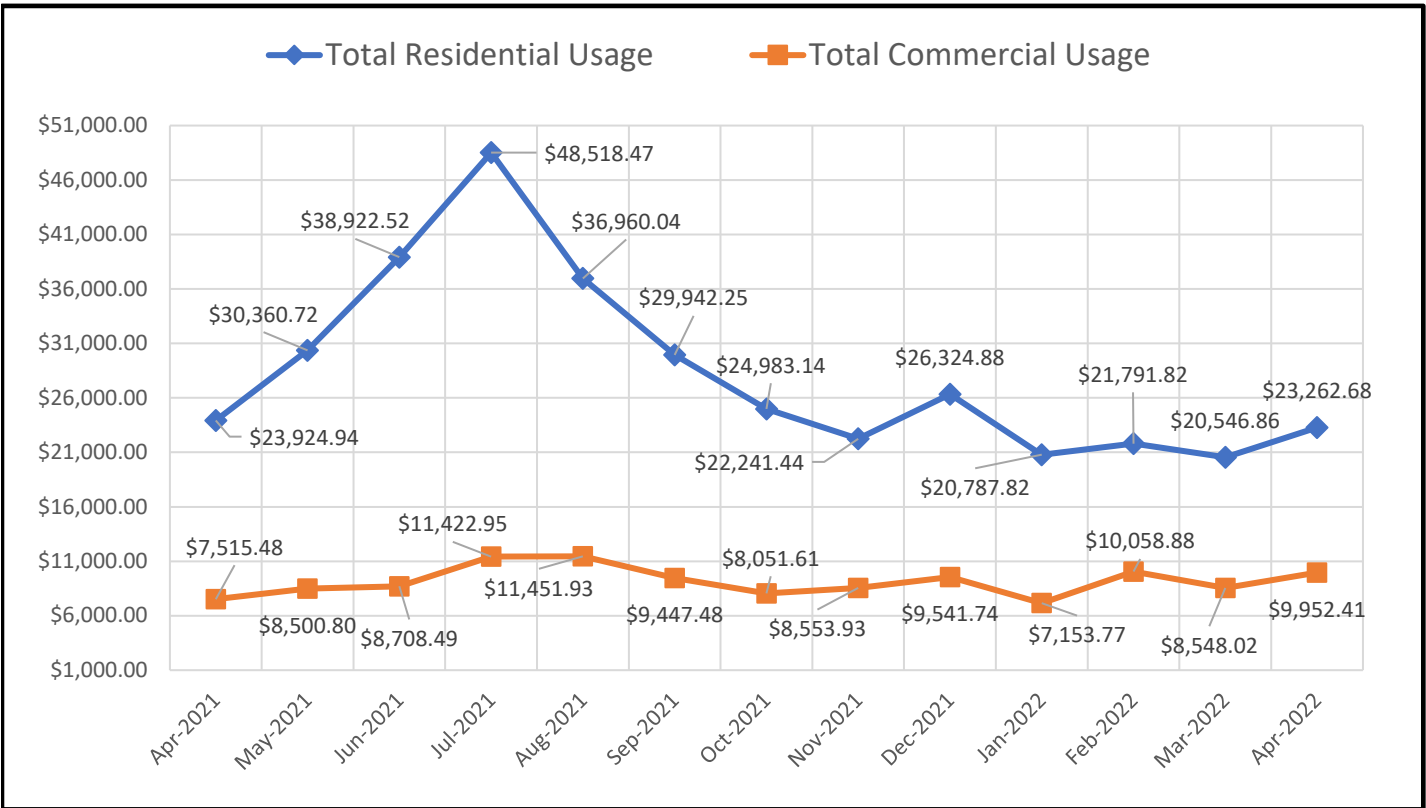
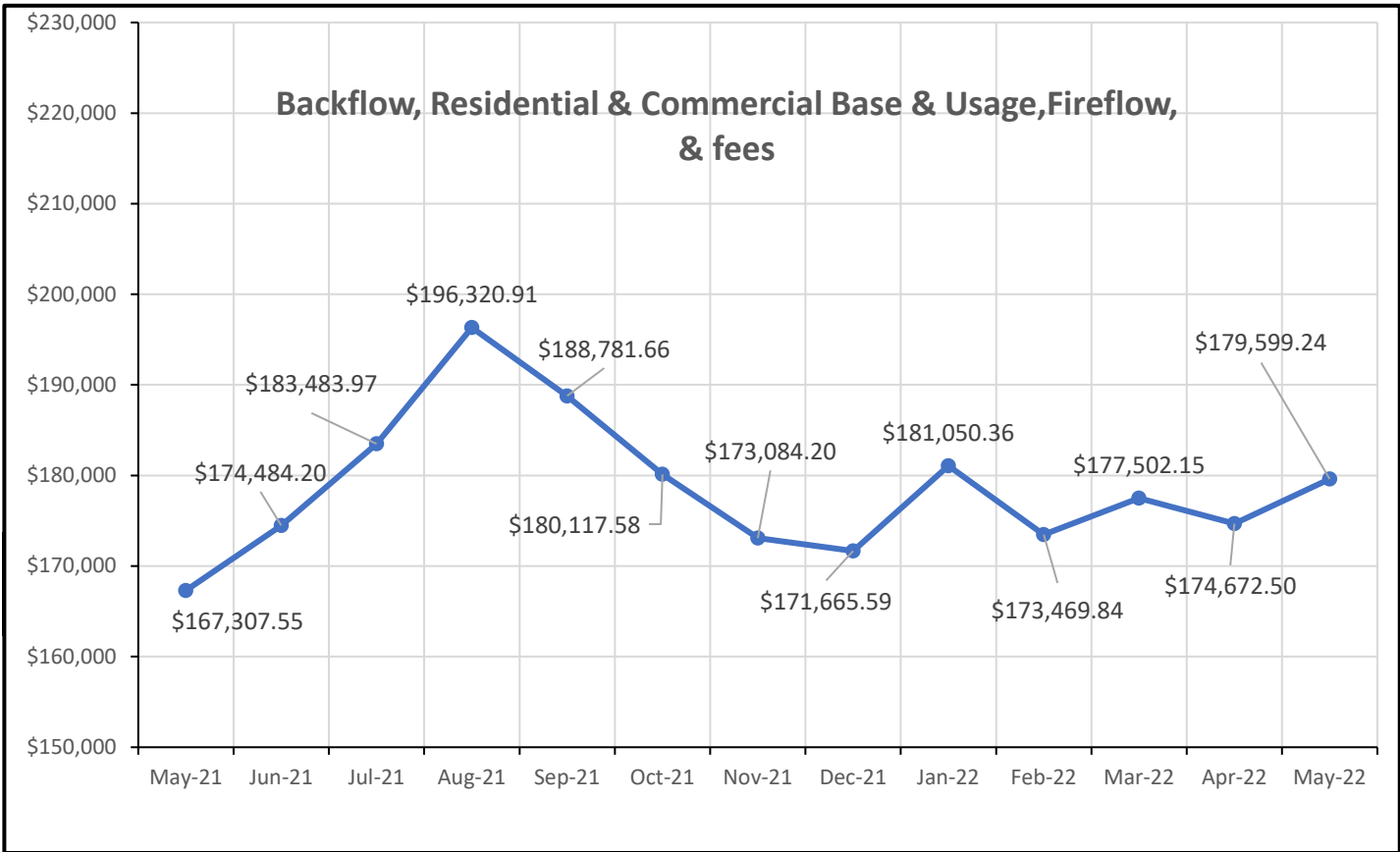
April Accounted for Water:

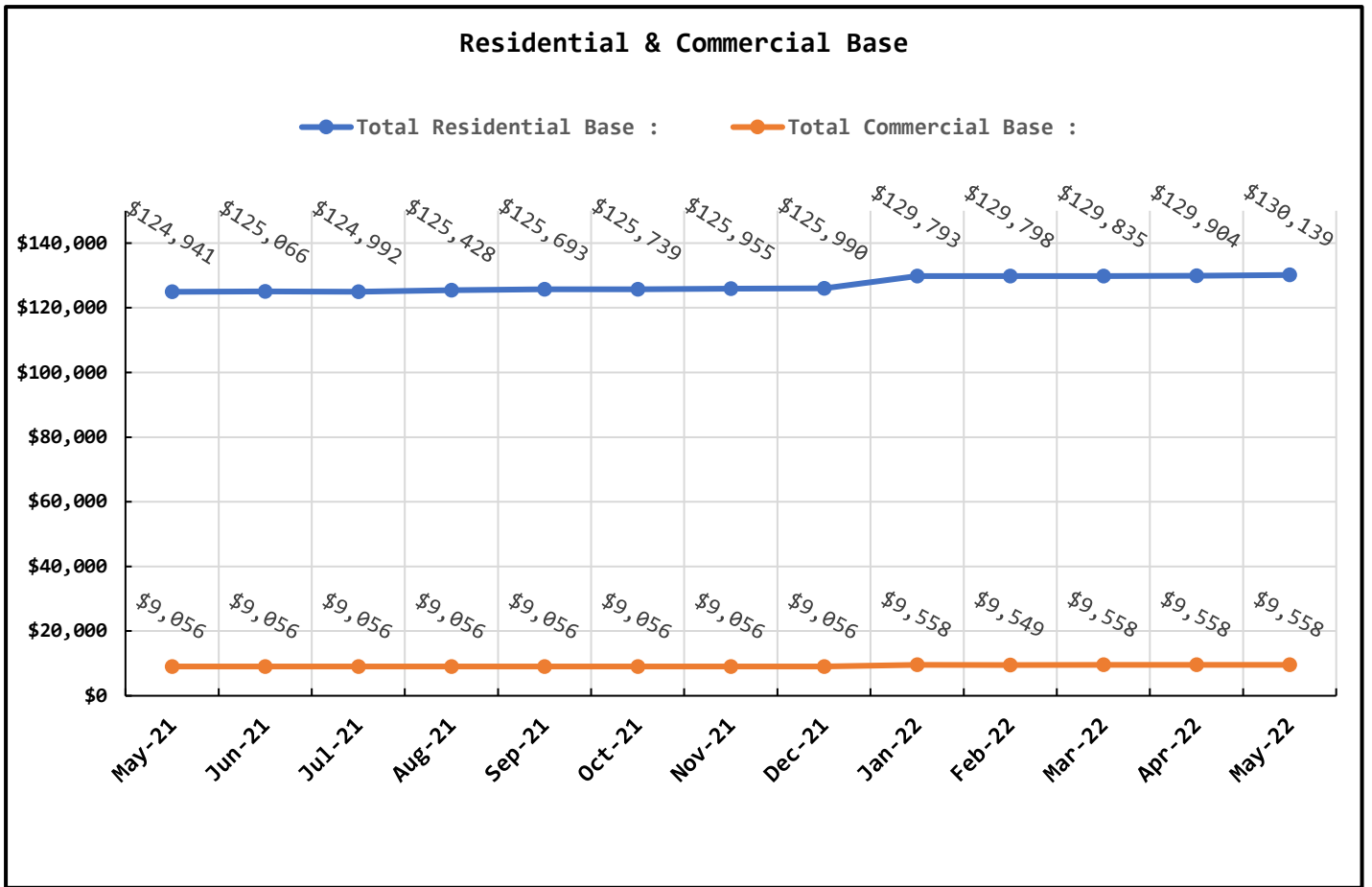
	NWF Backwash :	<u>0.2198</u>		<i>mg</i>
	SWF Backwash :	<u>0.7568</u>		<i>mg</i>
Distribution Flushing, Fire Dept, Pac Co & Waterline Leak Repair's:		<u>0.2634</u>		<i>mg</i>
	NBWD use NWF & SWF:	<u>0.4825</u>		<i>mg</i>
	Total Accounted for Water:	1.7225		MG
	Total Water Treated :	8.3542		MG
	Accounted for Water Used :	1.7225		MG
	Water Sent to Distribution :	6.6317		MG
	Water Sold :	6.4185		MG
	Distribution Leakage :	0.2132		MG
	Percent of Unaccounted for Water :	3.22		%



Data Period	May 1 - 31, 2022		Booster System Data	
	North Wellfield Booster High GPM :	714		<i>gpm</i>
	North Wellfield Booster Average GPM :	81		<i>gpm</i>
	North Wellfield High psi:	67		<i>psi</i>
	North Wellfield Average psi:	60		<i>psi</i>
	Total MG Booster pumped to Distribution at NWF:	3.6439		<i>MG</i>
	Total MG Booster pumped to Distribution at SWF:	4.4768		<i>MG</i>
	Total Booster Pumped to Distribution :	8.1207		<i>MG</i>
	South Wellfield Booster High gpm:	1,298		<i>gpm</i>
	South Wellfield Booster Average gpm:	103		<i>gpm</i>
	South Wellfield Booster High psi:	68		<i>psi</i>
	South Wellfield Booster Average psi:	61		<i>psi</i>
	245th Distribution Pressure Readings :			
	Highest	74		<i>psi</i>
	Lowest	40		<i>psi</i>
	Average	52		<i>psi</i>

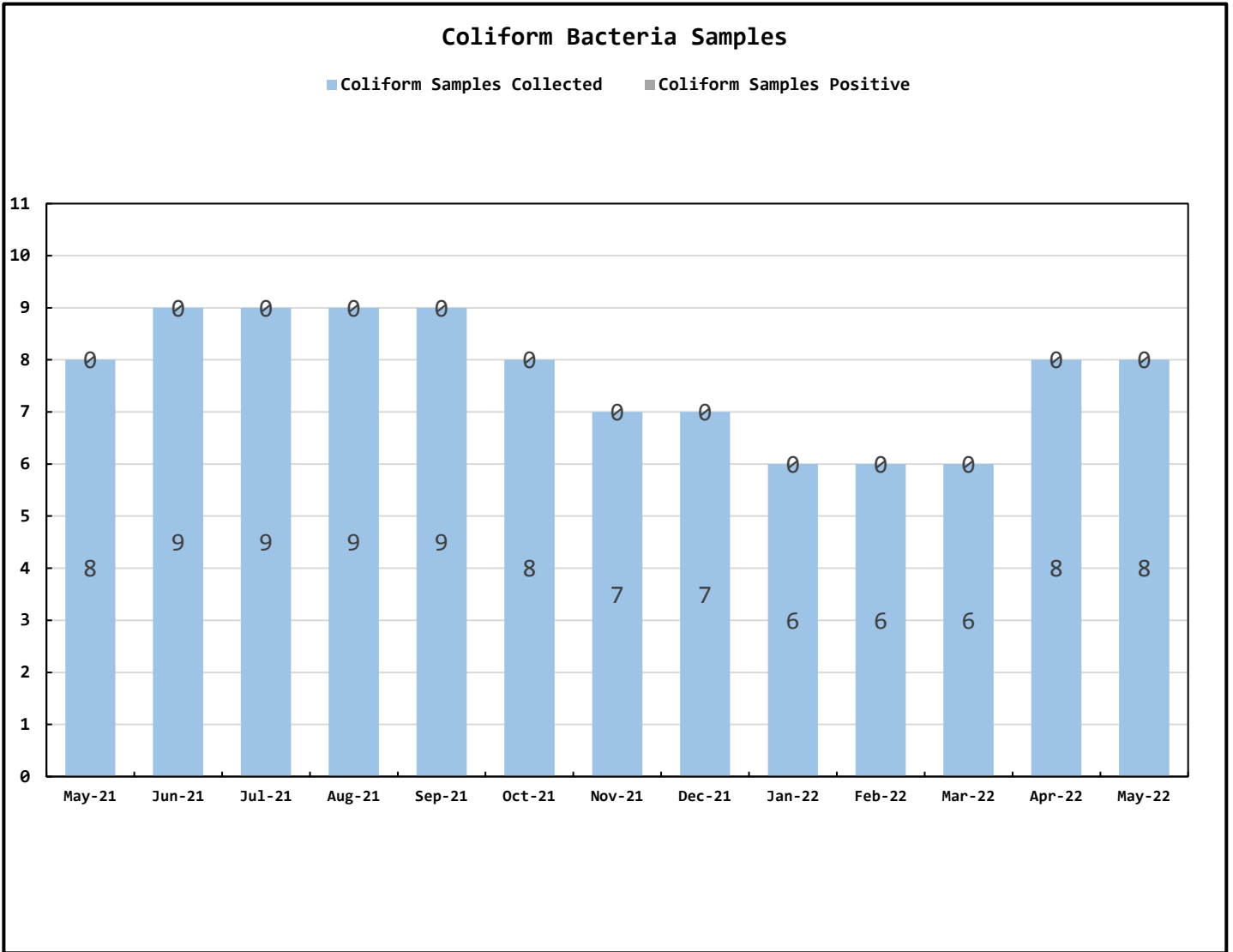
Data Period			Accounts Data		
May 1 - 31, 2022,			Residential Base	\$130,139.43	\$
April 1 - 30, 2022			Residential Usage	\$23,262.68	\$
May 1 - 31, 2022			Commercial Base	\$9,558.35	\$
April 1 - 30, 2022			Commercial Usage	\$9,952.41	\$
Residential Accounts	2,729	<i>ea</i>	Fire Flow Rate	\$1,221.47	\$
Commercial Accounts	100	<i>ea</i>	Backflow Assembly Rate	\$555.90	\$
Fire Flow Accounts	4	<i>ea</i>	Contract Reimbursement	0	\$
Backflow Accounts	40	<i>ea</i>	Other Fees & Charges	\$4,909.00	\$
			Total:	\$179,599.24	\$



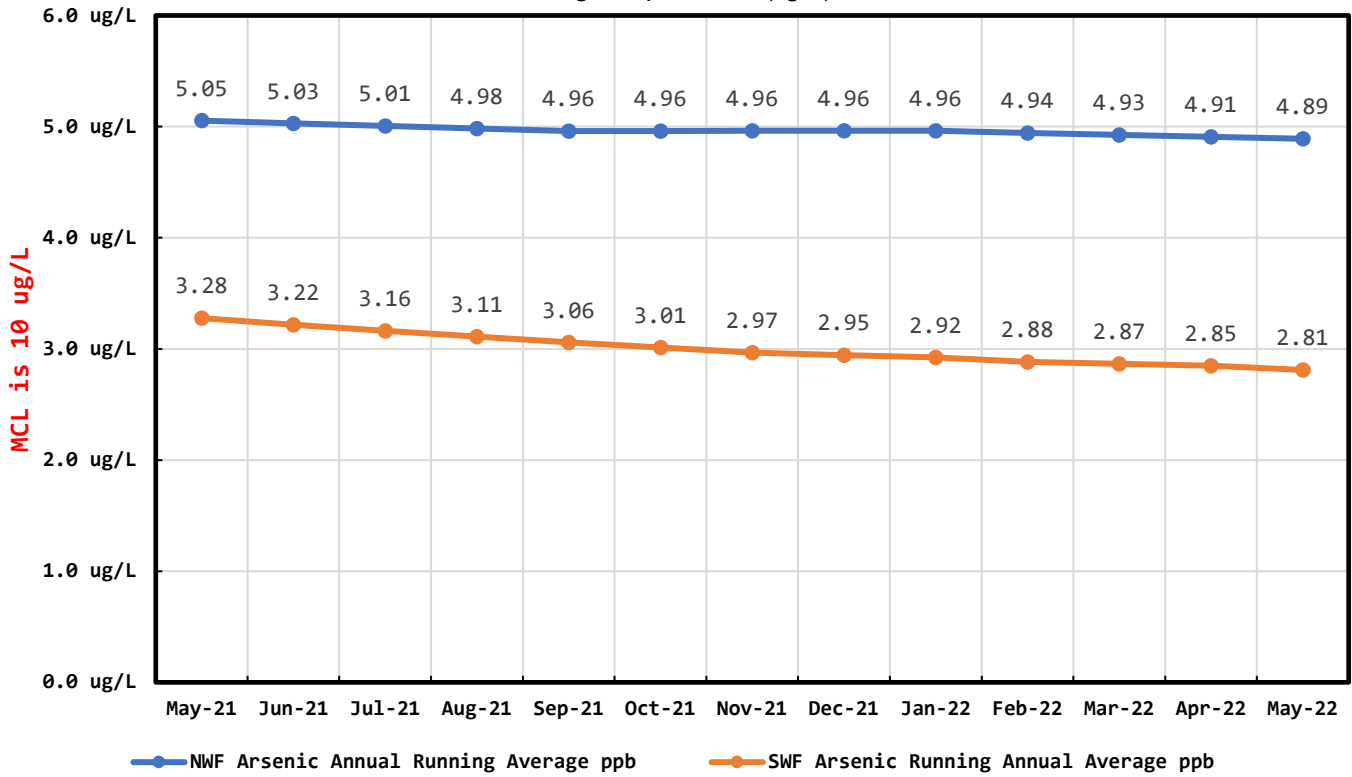


Data Period	May 1 - 31, 2022	Operations Data	
	Past Due Accounts	223	<i>ea</i>
	Properties with Liens	25	<i>ea</i>
	Accounts Locked Off	5	<i>ea</i>
	Water Main Locates	33	<i>ea</i>
	Water Quality Complaints	0	<i>ea</i>
	Customer Service Calls	36	<i>ea</i>
	Customer Valves Installed	1	<i>ea</i>
	New Services Installed	9	<i>ea</i>
	NBWD Office & Grounds Water Use:	0.4825	<i>MG</i>

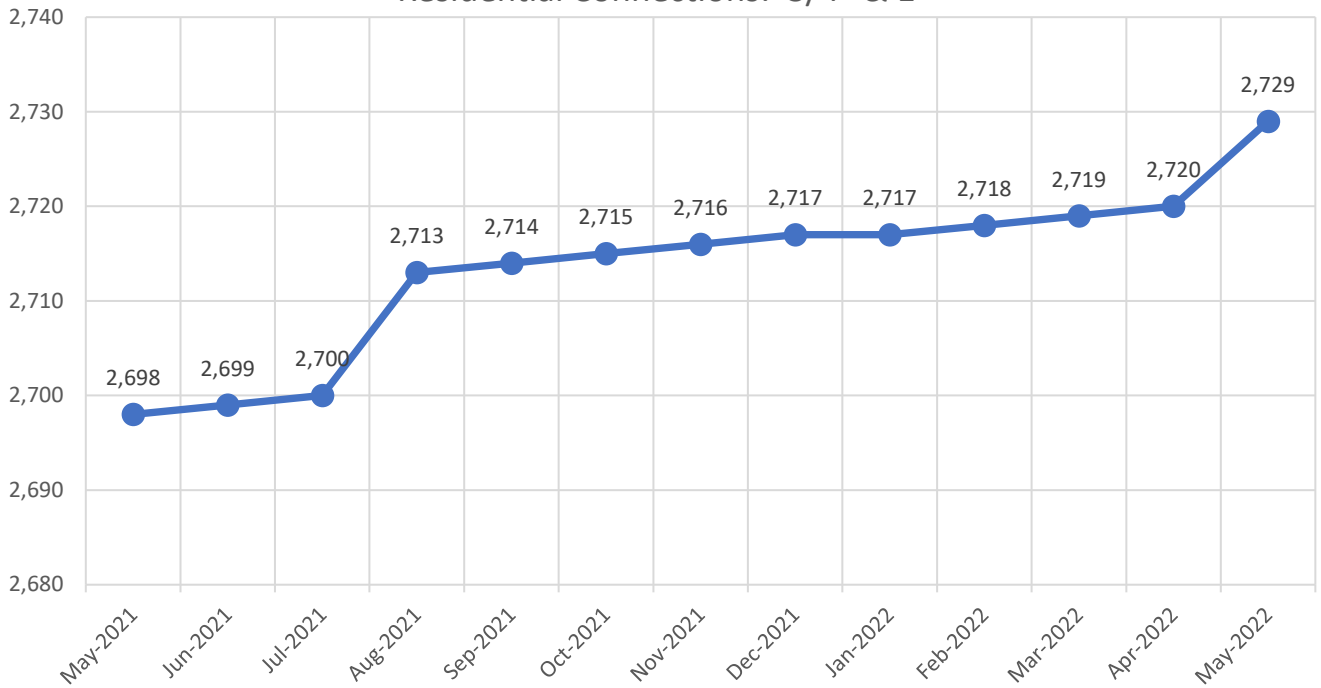
Data Period	May 1 - 31, 2022		Water Quality Data	
	Coliform Samples Collected	8		<i>ea</i>
	Coliform Samples Absent	8		<i>ea</i>
	Coliform Samples Postive	0		<i>ea</i>
	Coliform Sample Positive E.coli	0		<i>ea</i>
	NWF Arsenic	4		<i>ug/L</i>
	SWF Arsenic	2		<i>ug/L</i>
	NWF Arsenic Annual Running Average	4.89		<i>ug/L</i>
	SWF Arsenic Running Annual Average	2.73		<i>ug/L</i>



Arsenic Monthly Annual Average micrograms per liter (ug/L)



Residential Connections: 3/4" & 1"



General Managers Report for June

- May was maintenance month. Vehicles, backhoe, excavator, pumps, jet, and vacuum machine have all been serviced. Parts ordered and replaced in-house.
- Water plant had to have one of the new heads rebuilt, which we did in place. I made a class of it to show the crew how it was done. A plus for all of them.
- 9 new services were installed in May.
- Office staff have been busy performing audits on all accounts to make sure everything is accurate and up to date.
- Talked with Gray & Osborne about the mounting of the AMI antennas to the side of one tank at each facility.
- Emond's have allowed the car club to take down the perimeter fence that was up at the South Treatment Plant. I went over and talked to the car club. I am investigating this now.
- Looking to find someone that does GIS system work. Need to have our easement marked out. Like to have the crew put in an approach to the site of the old well field.
- Locates for Sennza continue.

May Work Orders

Read/Leave On	4
Turn Off/Lock – Customer Request	6
Turn Off/Lock – Non-Payment	5
Interrogate Meter	3
Locates	33
Unlock/Turn On	7
Test Backflow	1
Miscellaneous	1
Replace Meter Box	0
Low Pressure	1
Check Customer Valves	0
Dirty Water Complaints	0
Replace Meter	0
Install New Service	9
Assist Customer	0
Check For Leak	8
Re-Read Meter	0
Install Customer Control Valve	1
Total	79