

NORTH BEACH WATER DISTRICT GENERAL MANAGERS REPORT

For July's Meeting - 2022

Well Field Output

<u>June 1, 2022</u>	to	<u>June 30, 2022</u>	NWF Master Meter:	<u>4.5329</u>	<i>mg</i>
			SWF Master Meter:	<u>5.1955</u>	<i>mg</i>
			Total Pumped to Plant:	<u>9.7284</u>	<i>MG</i>

May's Water Plant Production

Data:

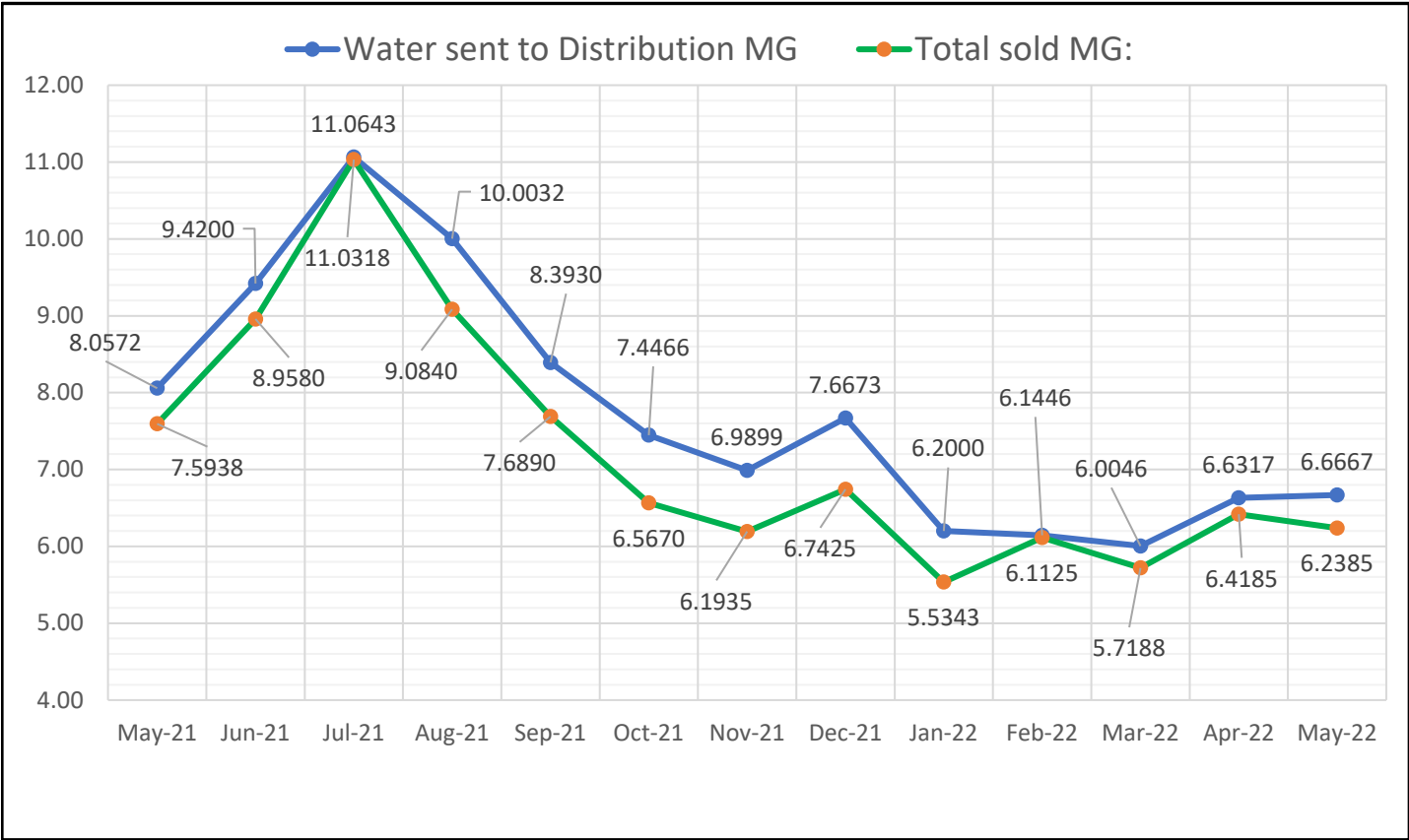
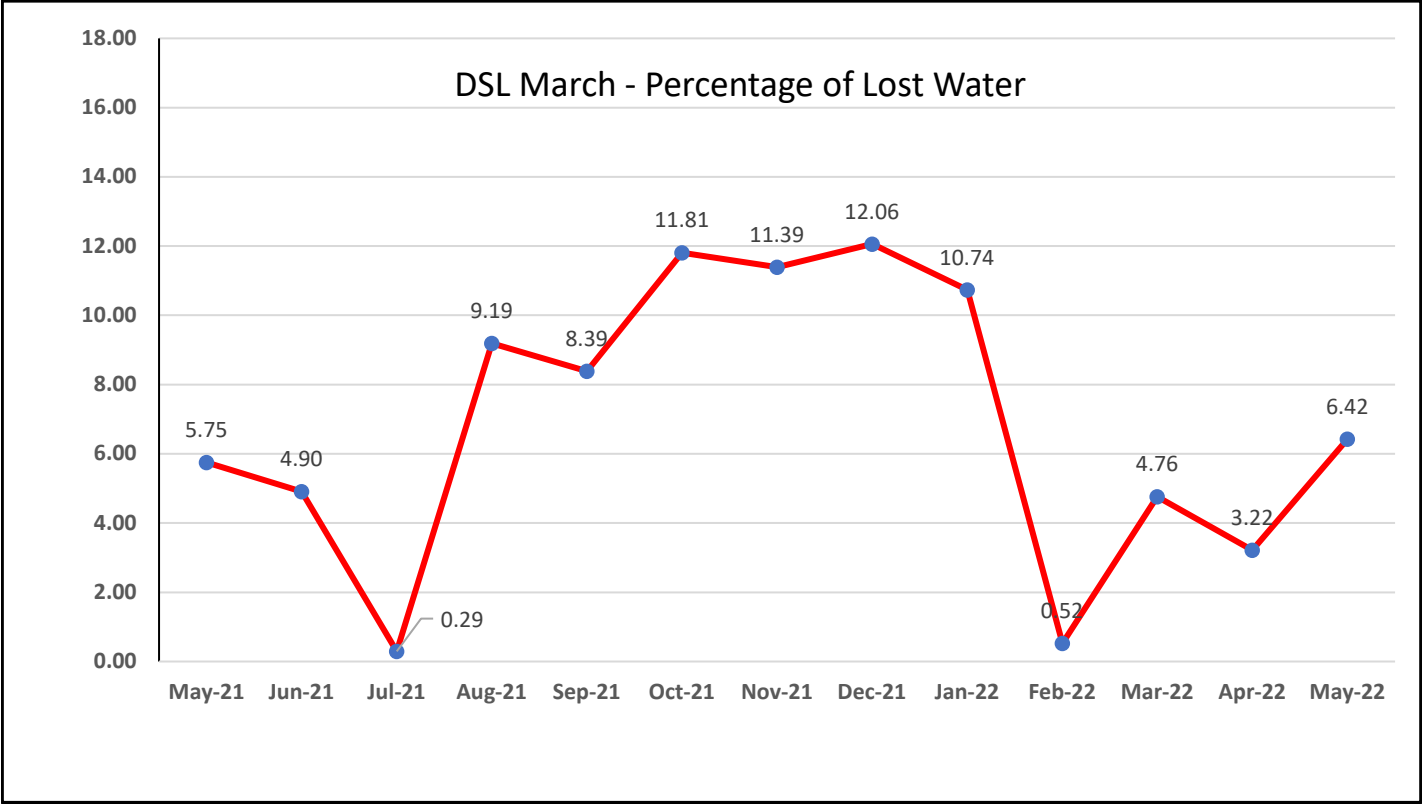
Data Period					
<u>May 1, 2022</u>	to	<u>May 31, 2022</u>	NWF Master Meter:	<u>4.1579</u>	<i>mg</i>
			SWF Master Meter:	<u>4.9433</u>	<i>mg</i>
			Accounted for Water:	<u>2.4345</u>	
			Total Water Pumped:	<u>9.1012</u>	<i>MG</i>

Metering Period

<u>May 1, 2022</u>	to	<u>May 31, 2022</u>	Total Water Sold :	<u>6.2385</u>	<i>MG</i>
--------------------	----	---------------------	--------------------	---------------	-----------

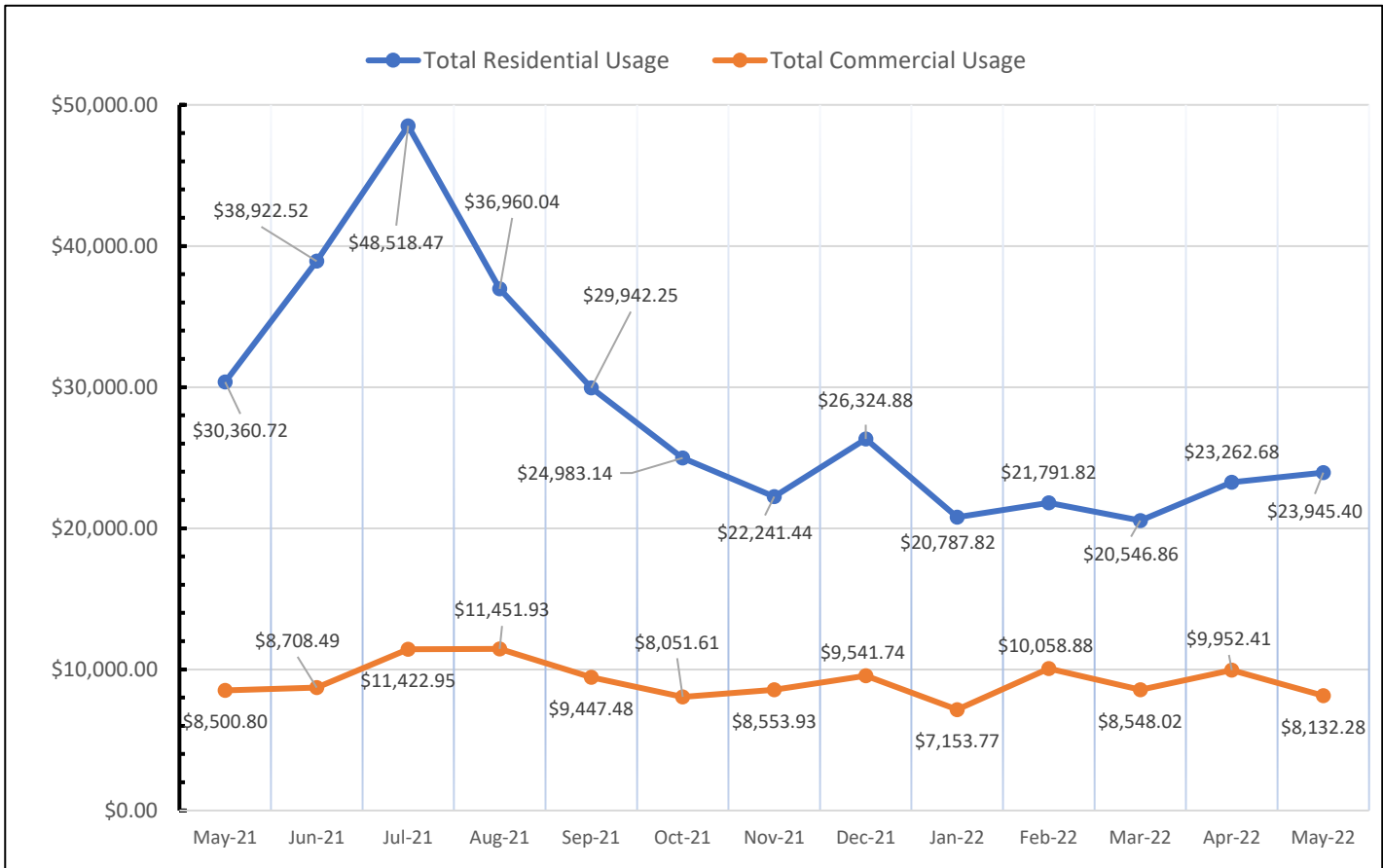
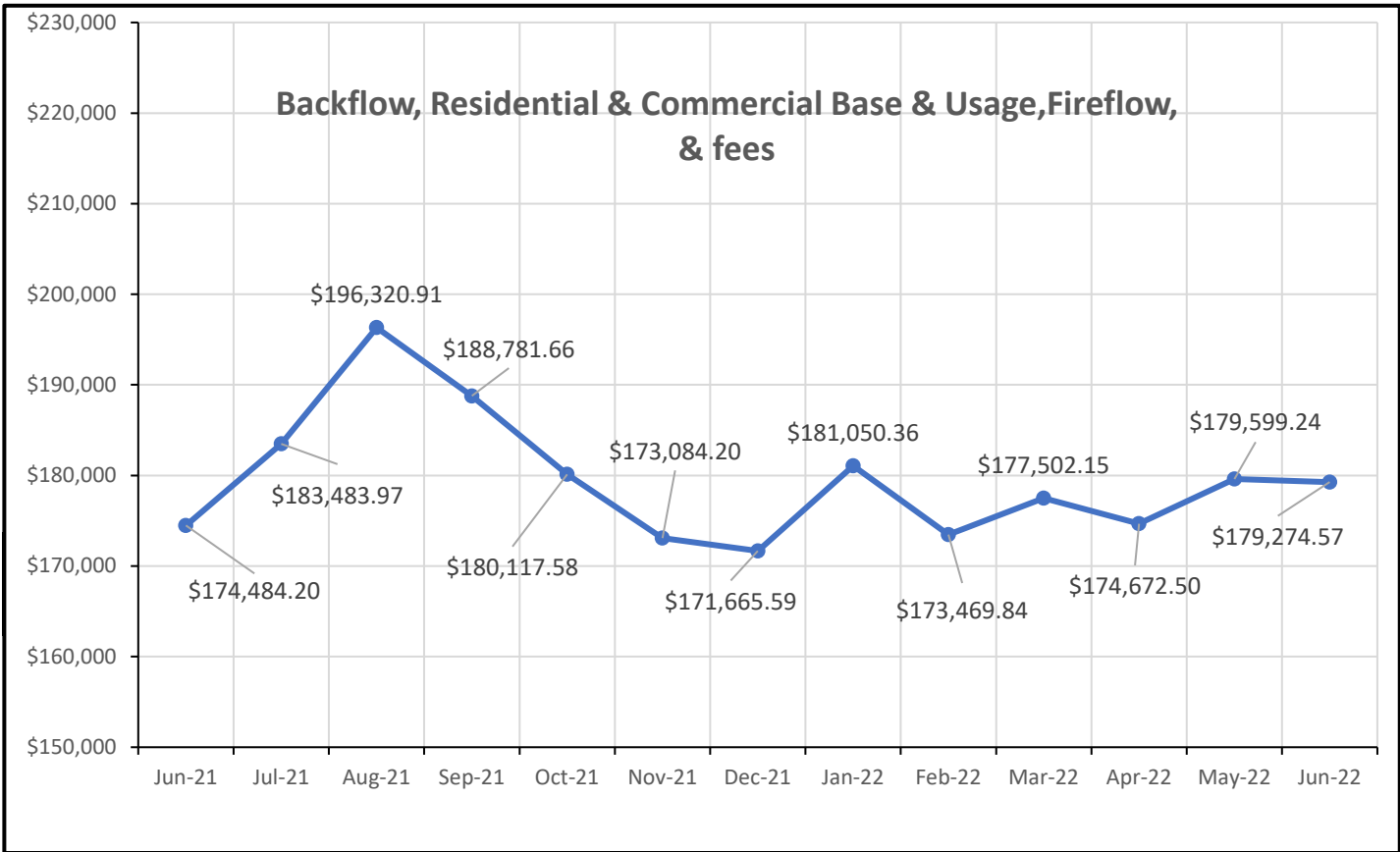
May's Accounted for Water:

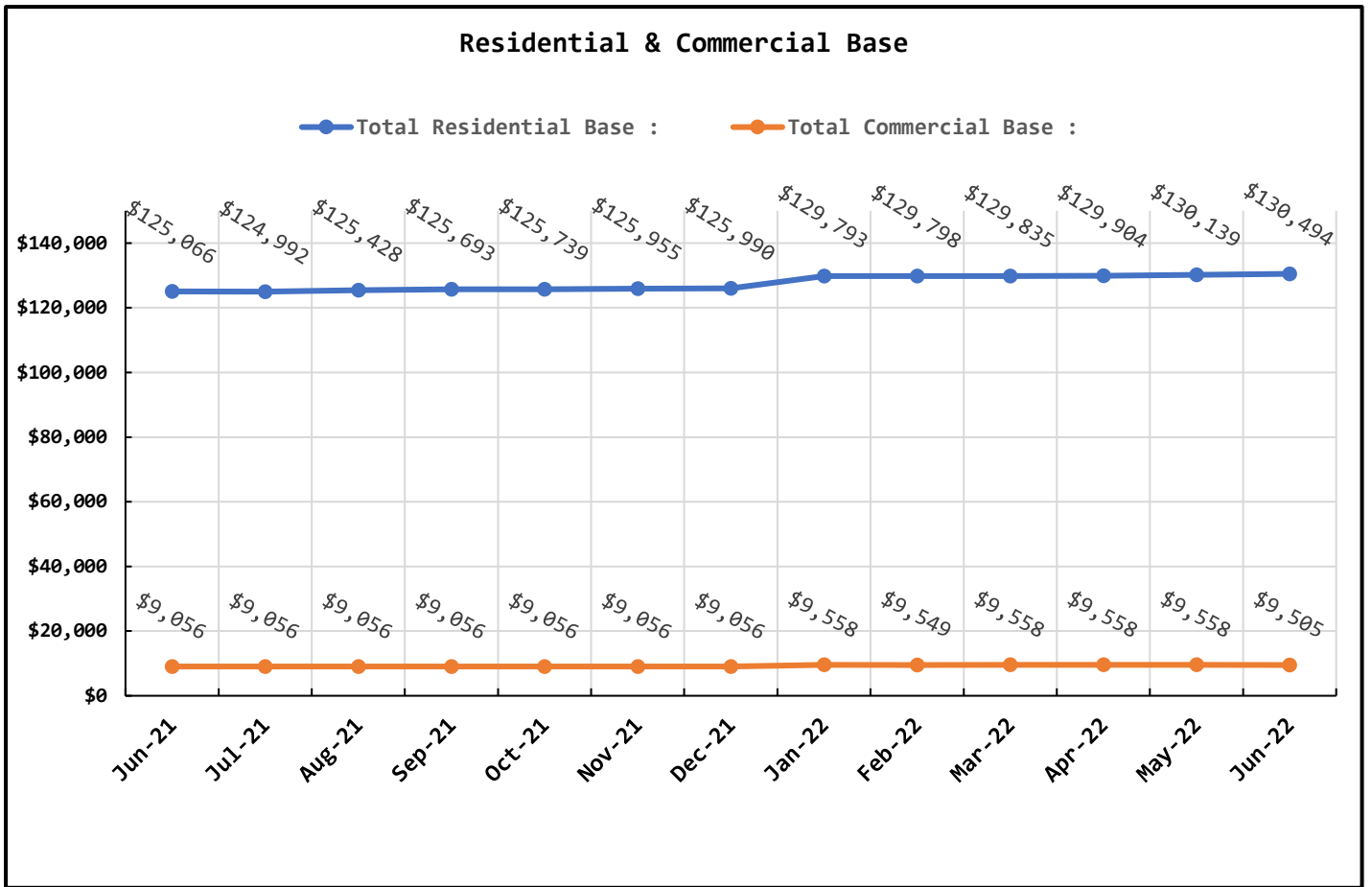
	NWF Backwash :	<u>0.4334</u>	<i>mg</i>
	SWF Backwash :	<u>1.0384</u>	<i>mg</i>
Distribution Flushing, Fire Dept, Pac Co & Waterline Leak Repair's:		<u>0.6485</u>	<i>mg</i>
	NBWD use NWF & SWF:	<u>0.4825</u>	<i>mg</i>
	Total Accounted for Water:	<u>2.4345</u>	<i>MG</i>
	Total Water Treated :	<u>9.1012</u>	<i>MG</i>
	Accounted for Water Used :	<u>2.4345</u>	<i>MG</i>
	Water Sent to Distribution :	<u>6.6667</u>	<i>MG</i>
	Water Sold :	<u>6.2385</u>	<i>MG</i>
	Distribution Leakage :	<u>0.2132</u>	<i>MG</i>
	Percent of Unaccounted for Water :	<u>6.42</u>	<i>%</i>



Data Period	June 1 - 30, 2022		Booster System Data	
	North Wellfield Booster High GPM :	714		<i>gpm</i>
	North Wellfield Booster Average GPM :	94		<i>gpm</i>
	North Wellfield High psi:	67		<i>psi</i>
	North Wellfield Average psi:	60		<i>psi</i>
	Total MG Booster pumped to Distribution at NWF:	4.0903		<i>MG</i>
	Total MG Booster pumped to Distribution at SWF:	4.8272		<i>MG</i>
	Total Booster Pumped to Distribution :	8.9175		<i>MG</i>
	South Wellfield Booster High gpm:	1,543		<i>gpm</i>
	South Wellfield Booster Average gpm:	115		<i>gpm</i>
	South Wellfield Booster High psi:	71		<i>psi</i>
	South Wellfield Booster Average psi:	61		<i>psi</i>
	245th Distribution Pressure Readings :			
	Highest	68		<i>psi</i>
	Lowest	42		<i>psi</i>
	Average	61		<i>psi</i>

Data Period			Accounts Data		
June 1 - 30, 2022,			Residential Base	\$130,494.34	\$
May 1 - 31, 2022			Residential Usage	\$23,945.40	\$
June 1 - 30, 2022,			Commercial Base	\$9,505.45	\$
May 1 - 31, 2022			Commercial Usage	\$8,132.28	\$
Residential Accounts	2,732	<i>ea</i>	Fire Flow Rate	\$1,221.47	\$
Commercial Accounts	99	<i>ea</i>	Backflow Assembly Rate	\$378.80	\$
Fire Flow Accounts	4	<i>ea</i>	Contract Reimbursement	0	\$
Backflow Accounts	37	<i>ea</i>	Other Fees & Charges	\$4,909.00	\$
			Total:	\$179,274.57	\$





Data Period	June 1 - 30, 2022	Operations Data
	Past Due Accounts	229 <i>ea</i>
	Properties with Liens	20 <i>ea</i>
	Accounts Locked Off	3 <i>ea</i>
	Water Main Locates	50 <i>ea</i>
	Water Quality Complaints	4 <i>ea</i>
	Customer Service Calls	57 <i>ea</i>
	Customer Valves Installed	1 <i>ea</i>
	New Services Installed	3 <i>ea</i>
	NBWD Office & Grounds Water Use:	0.4825 <i>MG</i>

Data Period

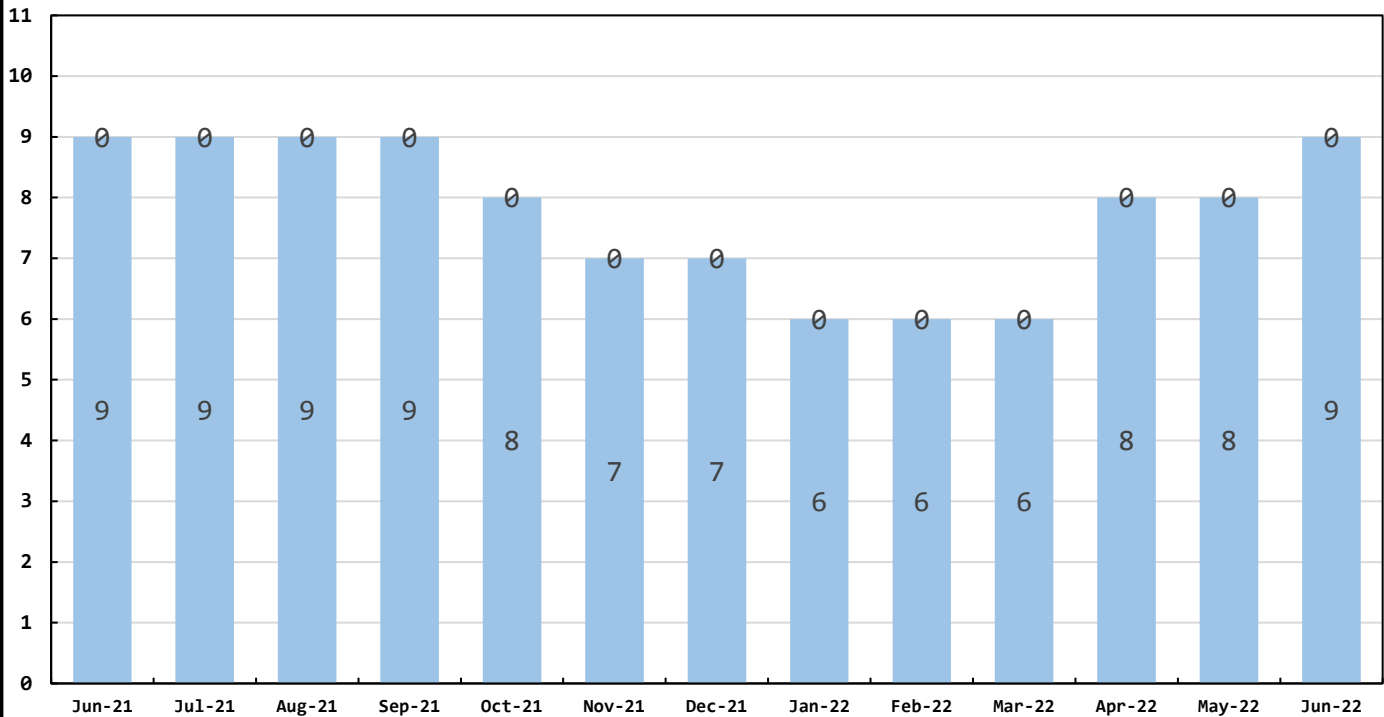
June 1 - 30, 2022

Water Quality Data

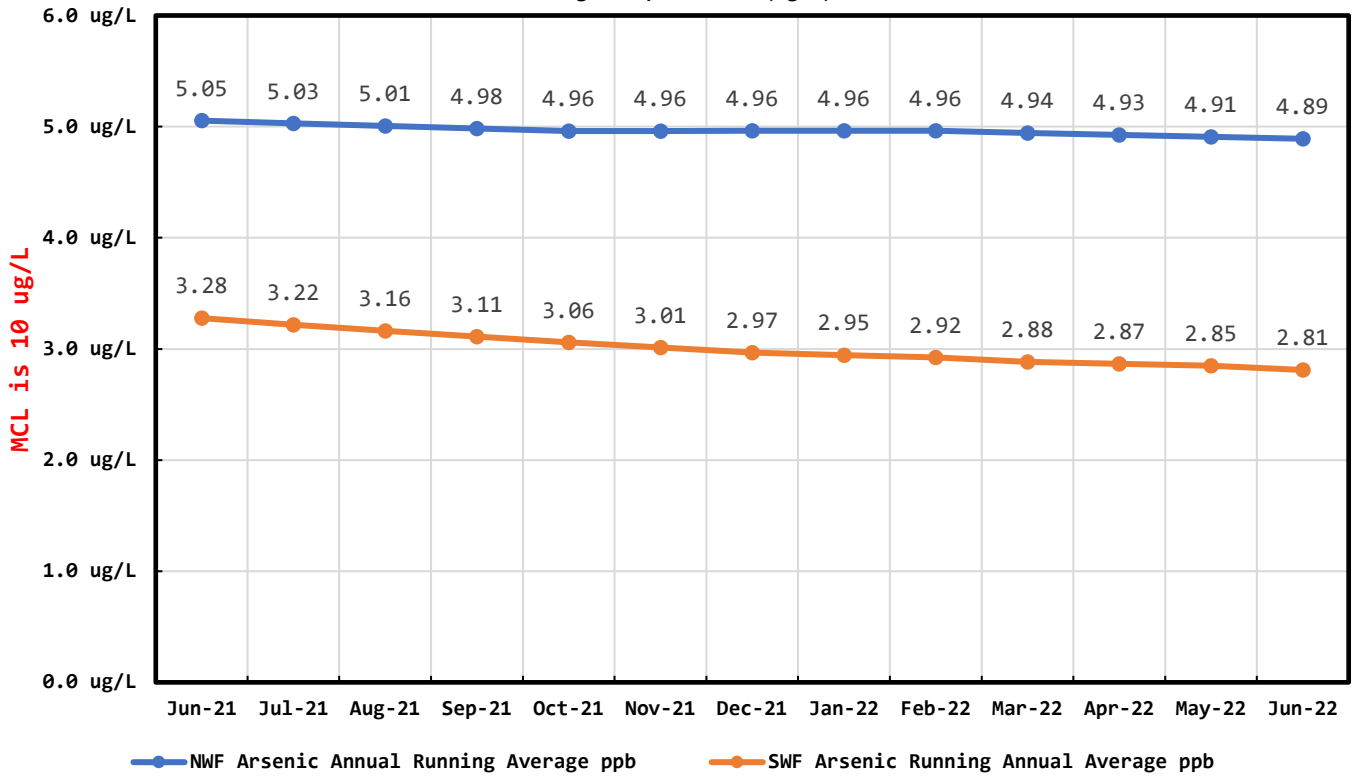
Coliform Samples Collected	9	<i>ea</i>
Coliform Samples Absent	9	<i>ea</i>
Coliform Samples Postive	0	<i>ea</i>
Coliform Sample Positive E.coli	0	<i>ea</i>
NWF Arsenic	4	<i>ug/L</i>
SWF Arsenic	2	<i>ug/L</i>
NWF Arsenic Annual Running Average	4.87	<i>ug/L</i>
SWF Arsenic Running Annual Average	2.71	<i>ug/L</i>

Coliform Bacteria Samples

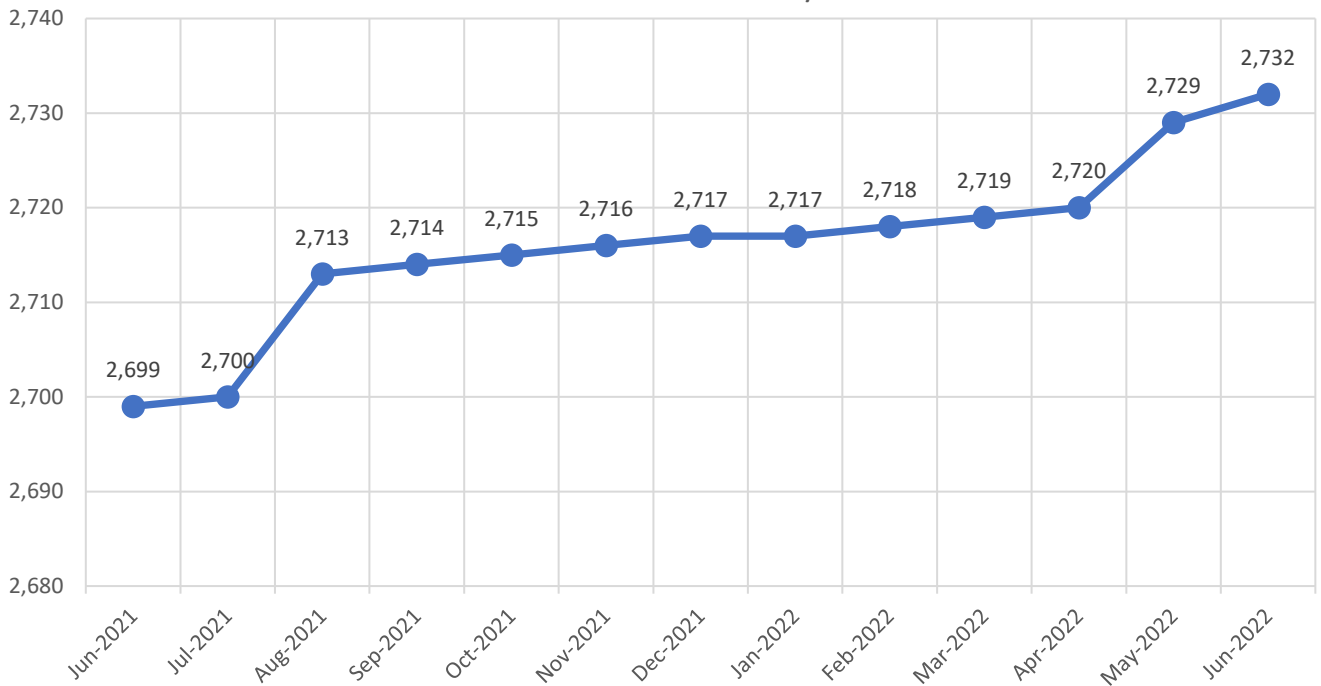
■ Coliform Samples Collected ■ Coliform Samples Positive



Arsenic Monthly Annual Average micrograms per liter (ug/L)



Residential Connections: 3/4" & 1"



General Managers Report for July

- Fence section for the neighbor to the west has been completed.
- Installed new flow meter in the North Booster Station and moved chlorine injection line upstream for better mixing to distribution.
- Hired surveyor to mark out the corners at the South Water Treatment Plant and layout our easement at the old well site properties east of U Street. (Geraldine J. McDanel).

Scope of work

- Research deeds and existing survey control
 - Prepare computer base map and preliminary calculations
 - Digitize prior relevant surveys
 - Tie and expand existing survey control by field traverse and map lines of occupation
 - Reduce field notes and plot to base map
 - Prepare final boundary calculations and locate/Set easement boundary corners
 - Prepare and record Record-of-Survey drawing
-
- Mark Jeffries our new hire is settling in just fine. He is doing fantastic.
 - The services keep coming in. Just had 12 new meters come in and they are already bought up. Ordered another 12.

June Work Orders

Read/Leave On	7
Turn Off/Lock – Customer Request	3
Turn Off/Lock – Non-Payment	3
Interrogate Meter	2
Locates	50
Unlock/Turn On	14
Test Backflow	4
Miscellaneous	6
Replace Meter Box	0
Low Pressure	1
Check Customer Valves	0
Dirty Water Complaints	4
Replace Meter	4
Install New Service	3
Assist Customer	1
Check For Leak	8
Re-Read Meter	10
Install Customer Control Valve	1
Total	121