

NORTH BEACH WATER DISTRICT GENERAL MANAGERS REPORT

For August Meeting - 2022

Well Field Output

| | | | | | | |
|---------------------|----|----------------------|--|------------------------|----------------|-----------|
| <u>July 1, 2022</u> | to | <u>July 31, 2022</u> | | NWF Master Meter: | <u>6.5957</u> | <i>mg</i> |
| | | | | SWF Master Meter: | <u>6.8134</u> | <i>mg</i> |
| | | | | Total Pumped to Plant: | <u>13.4091</u> | <i>MG</i> |

June Water Plant Production

Data:

Data Period

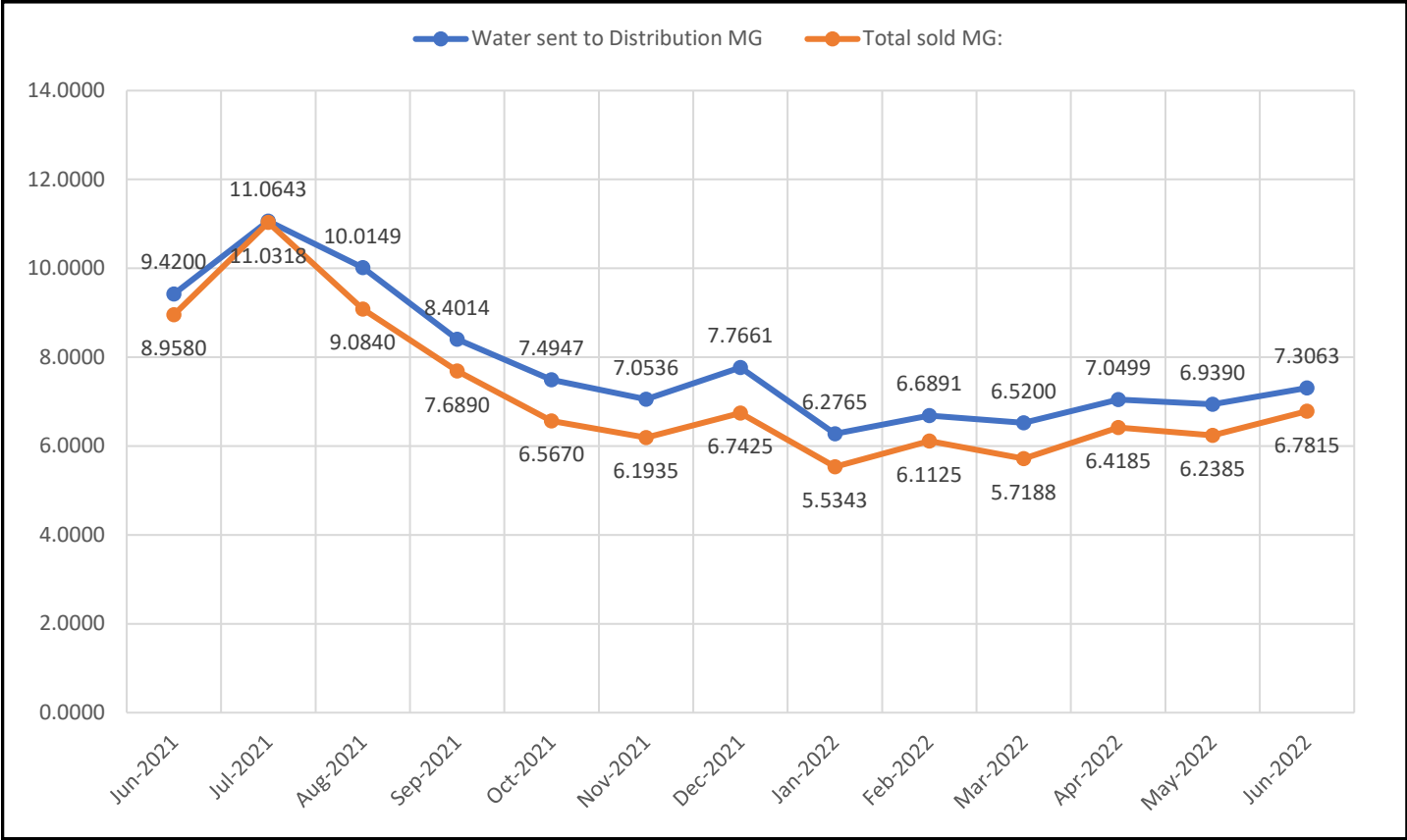
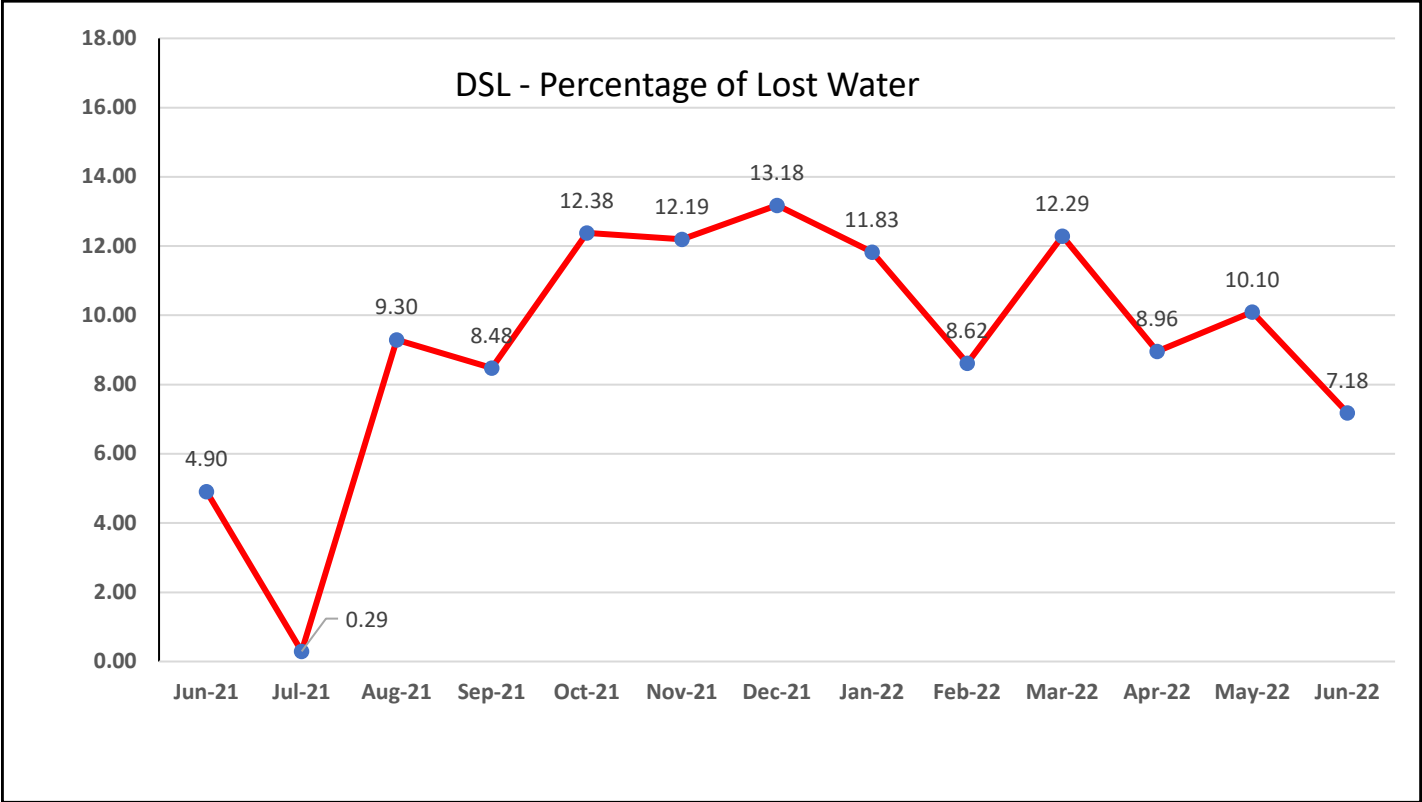
| | | | | | | |
|---------------------|----|----------------------|--|----------------------|---------------|-----------|
| <u>June 1, 2022</u> | to | <u>June 30, 2022</u> | | NWF Master Meter: | <u>4.5329</u> | <i>mg</i> |
| | | | | SWF Master Meter: | <u>5.1955</u> | <i>mg</i> |
| | | | | Accounted for Water: | <u>2.4221</u> | <i>MG</i> |
| | | | | Total Water Pumped: | <u>9.7284</u> | <i>MG</i> |

Metering Period

| | | | | | | |
|---------------------|----|----------------------|--|--------------------|---------------|-----------|
| <u>June 1, 2022</u> | to | <u>June 30, 2022</u> | | Total Water Sold : | <u>6.7815</u> | <i>MG</i> |
|---------------------|----|----------------------|--|--------------------|---------------|-----------|

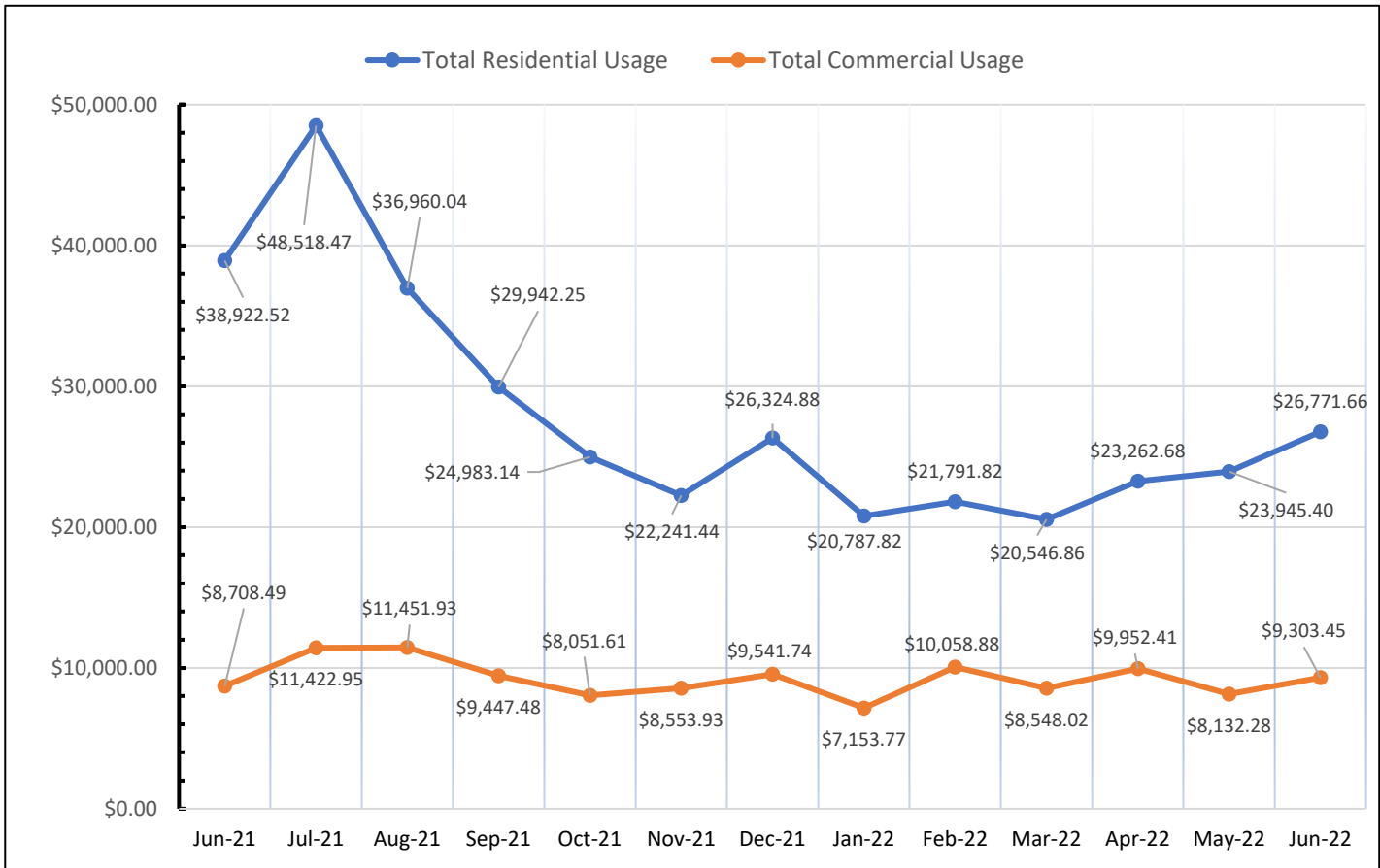
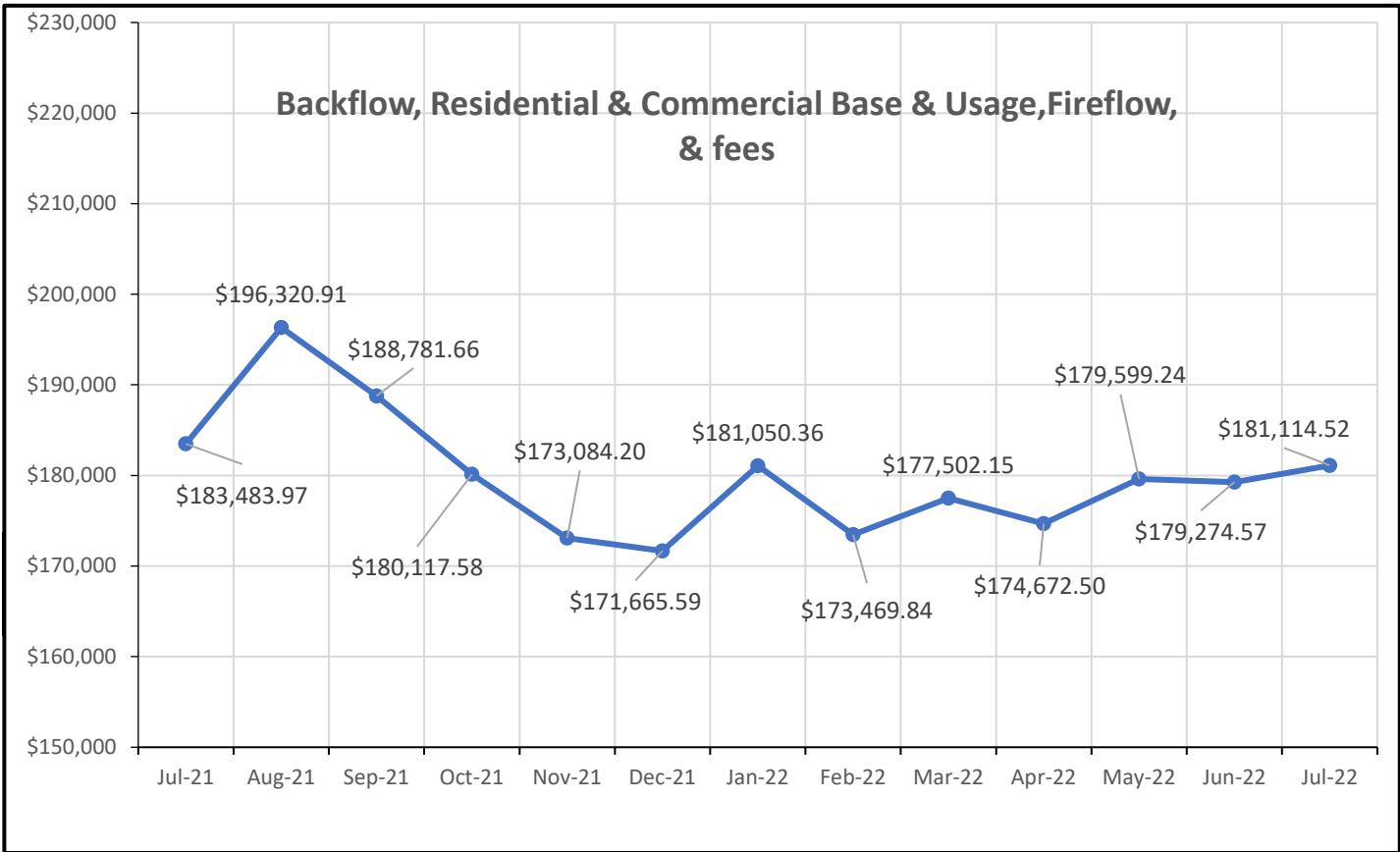
June's Accounted for Water:

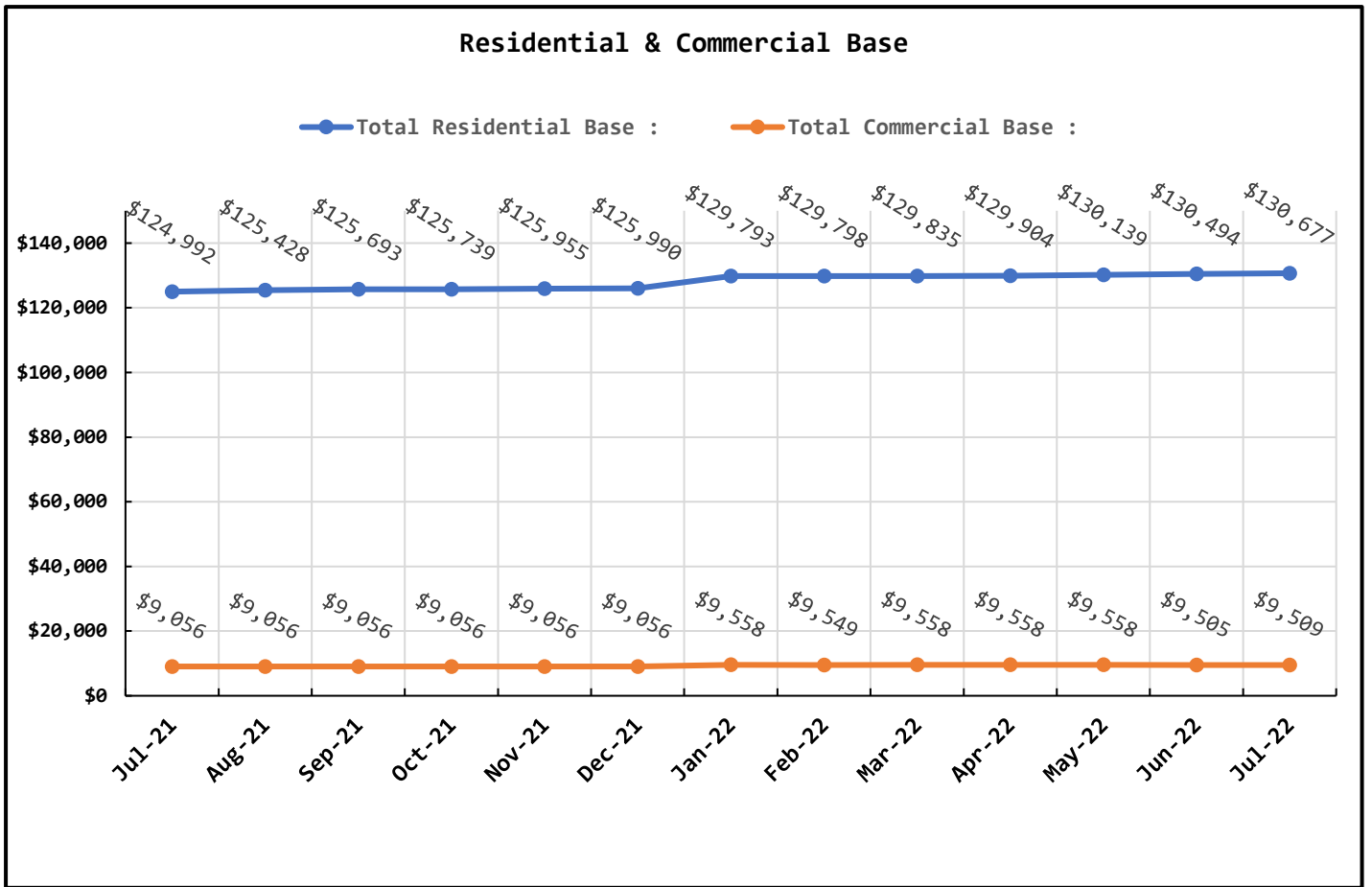
| | | | | |
|---|--|---|---------------|-----------|
| | | NWF Backwash : | <u>0.3474</u> | <i>mg</i> |
| | | SWF Backwash : | <u>1.4800</u> | <i>mg</i> |
| Distribution Flushing, Fire Dept, Pac Co & Waterline Leak Repair's: | | | <u>0.5640</u> | <i>mg</i> |
| | | NBWD use NWF & SWF: | <u>0.0307</u> | <i>mg</i> |
| | | Total Accounted for Water: | <u>2.4221</u> | <i>MG</i> |
| | | Total Water Treated : | <u>9.7284</u> | <i>MG</i> |
| | | Accounted for Water Used : | <u>2.4221</u> | <i>MG</i> |
| | | Water Sent to Distribution : | <u>7.3063</u> | <i>MG</i> |
| | | Water Sold : | <u>6.7815</u> | <i>MG</i> |
| | | Distribution Leakage : | <u>0.5248</u> | <i>MG</i> |
| | | Percent of Unaccounted for Water : | <u>7.18</u> | <i>%</i> |



| Data Period | July 1 - 31, 2022 | | Booster System Data | | |
|-------------|-------------------|--|---|--------|------------|
| | | | North Wellfield Booster High GPM : | 876 | <i>gpm</i> |
| | | | North Wellfield Booster Average GPM : | 127 | <i>gpm</i> |
| | | | North Wellfield High psi: | 68 | <i>psi</i> |
| | | | North Wellfield Average psi: | 59 | <i>psi</i> |
| | | | Total MG Booster pumped to Distribution at NWF: | 4.0903 | <i>MG</i> |
| | | | Total MG Booster pumped to Distribution at SWF: | 4.8272 | <i>MG</i> |
| | | | Total Booster Pumped to Distribution : | 8.9175 | <i>MG</i> |
| | | | South Wellfield Booster High gpm: | 1,495 | <i>gpm</i> |
| | | | South Wellfield Booster Average gpm: | 147 | <i>gpm</i> |
| | | | South Wellfield Booster High psi: | 71 | <i>psi</i> |
| | | | South Wellfield Booster Average psi: | 61 | <i>psi</i> |
| | | | 245th Distribution Pressure Readings : | | |
| | | | Highest | 70 | <i>psi</i> |
| | | | Lowest | 24 | <i>psi</i> |
| | | | Average | 60 | <i>psi</i> |

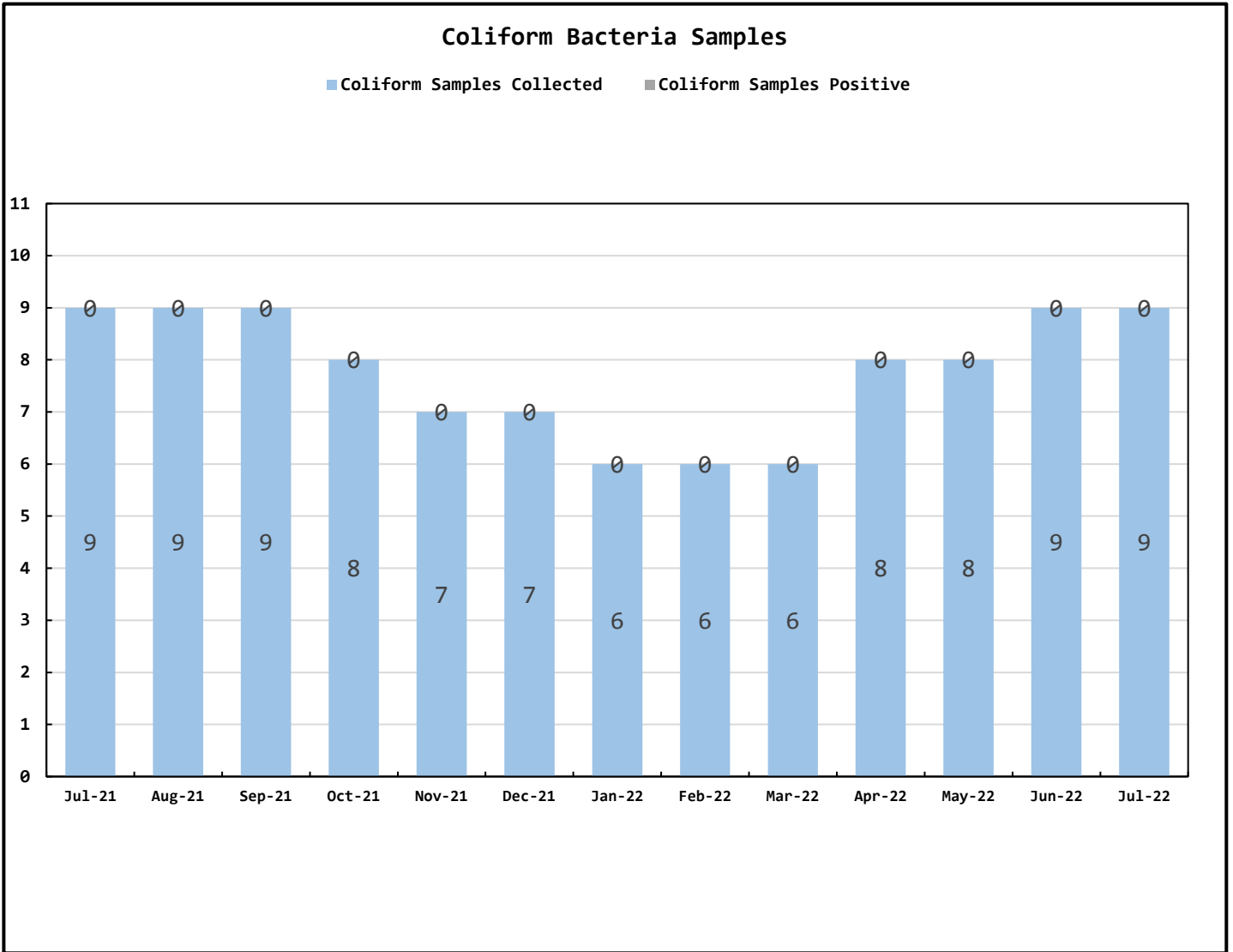
| Data Period | | | Accounts Data | | |
|----------------------|-------|-----------|------------------------|--------------|----|
| July 1 - 31, 2022, | | | Residential Base | \$130,676.66 | \$ |
| June 1 - 30, 2022 | | | Residential Usage | \$26,771.66 | \$ |
| July 1 - 31, 2022, | | | Commercial Base | \$9,508.76 | \$ |
| June 1 - 30, 2022 | | | Commercial Usage | \$9,303.45 | \$ |
| Residential Accounts | 2,736 | <i>ea</i> | Fire Flow Rate | \$1,221.47 | \$ |
| Commercial Accounts | 99 | <i>ea</i> | Backflow Assembly Rate | \$644.80 | \$ |
| Fire Flow Accounts | 4 | <i>ea</i> | Other Fees & Charges | 2,987.72 | \$ |
| Backflow Accounts | 37 | <i>ea</i> | Total: | \$181,114.52 | \$ |



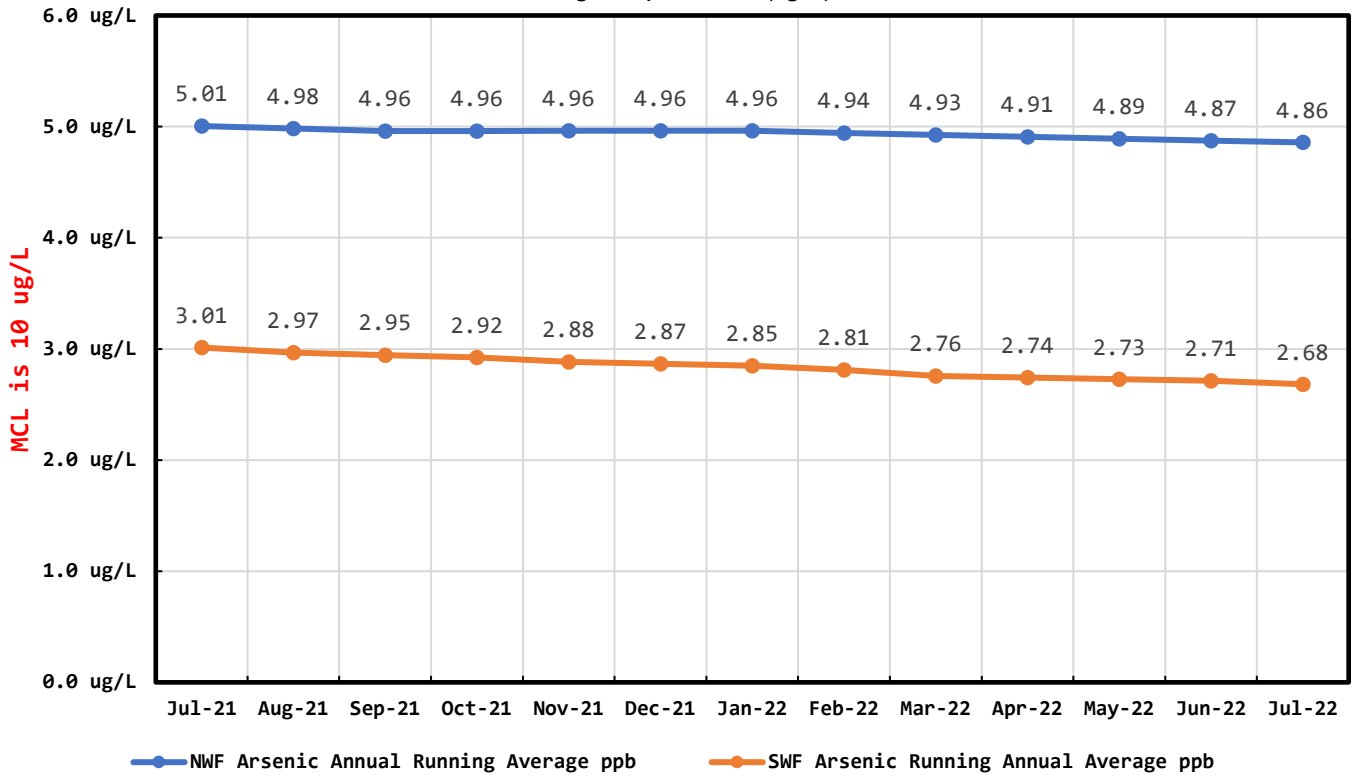


| Data Period | July 1 - 31, 2022 | Operations Data |
|-------------|----------------------------------|-------------------------|
| | Past Due Accounts | 230 <i>ea</i> |
| | Properties with Liens | 20 <i>ea</i> |
| | Accounts Locked Off | 5 <i>ea</i> |
| | Water Main Locates | 25 <i>ea</i> |
| | Water Quality Complaints | 5 <i>ea</i> |
| | Customer Service Calls | 69 <i>ea</i> |
| | Customer Valves Installed | 1 <i>ea</i> |
| | New Services Installed | 3 <i>ea</i> |
| | NBWD Office & Grounds Water Use: | <u>0.0307</u> <i>MG</i> |

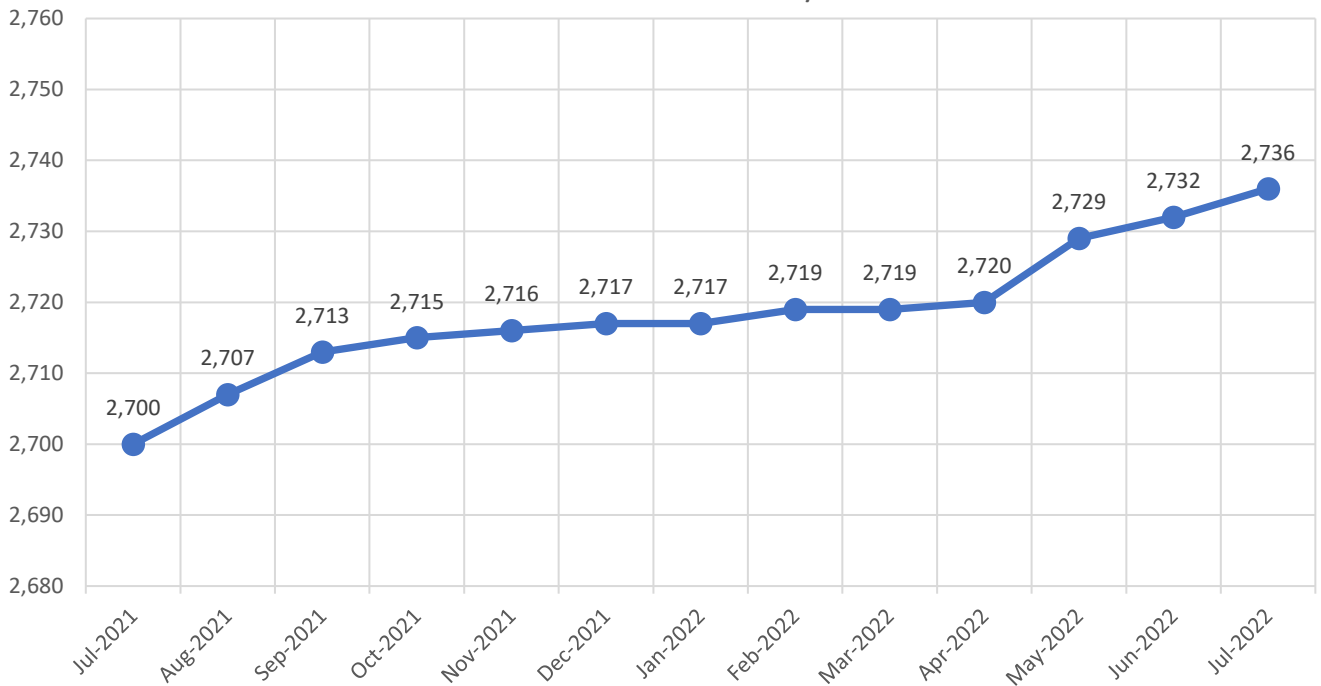
| Data Period | July 1 - 31, 2022 | | Water Quality Data | |
|-------------|------------------------------------|------|--------------------|--|
| | Coliform Samples Collected | 9 | <i>ea</i> | |
| | Coliform Samples Absent | 9 | <i>ea</i> | |
| | Coliform Samples Postive | 0 | <i>ea</i> | |
| | Coliform Sample Positive E.coli | 0 | <i>ea</i> | |
| | NWF Arsenic | 4 | <i>ug/L</i> | |
| | SWF Arsenic | 1 | <i>ug/L</i> | |
| | NWF Arsenic Annual Running Average | 4.86 | <i>ug/L</i> | |
| | SWF Arsenic Running Annual Average | 2.68 | <i>ug/L</i> | |



Arsenic Monthly Annual Average micrograms per liter (ug/L)



Residential Connections: 3/4" & 1"



General Managers Report for August 2022

- Installed new flow meter in the North Booster Station and moved chlorine injection line upstream for better mixing to the distribution system.
- Leak Repairs
 - Vernon & Park - 265th - 2"
 - U Street and 247th Lane - 2"
 - V Street and 220 Street - 2"
- Battery backup for the North Well Field has been installed for the Water Treatment & Booster Station facilities.
- Pilot test has been completed of the North Well Field and awaiting report. All indications from the pilot are positive.
- Concrete pad has been poured at the South Water Plant. This was a safety issue for the delivery of chemicals.
- Brass parts for services and repairs has become a real problem. All suppliers have issued a 30-to-34-week delivery. HD Fowler, Consolidated Supply and Core & Main.
- Vernon Project started on the 15th of August and we already have 1000 feet in the ground.

July Work Orders

| | |
|----------------------------------|------------|
| Read/Leave On | 14 |
| Turn Off/Lock – Customer Request | 7 |
| Turn Off/Lock – Non-Payment | 5 |
| Interrogate Meter | 2 |
| Locates | 25 |
| Unlock/Turn On | 7 |
| Test Backflow | 6 |
| Miscellaneous | 7 |
| Replace Meter Box | 1 |
| Low Pressure | 0 |
| Check Customer Valves | 1 |
| Dirty Water Complaints | 5 |
| Replace Meter | 4 |
| Install New Service | 0 |
| Assist Customer | 8 |
| Check For Leak | 10 |
| Re-Read Meter | 0 |
| Install Customer Control Valve | 1 |
| Total | 103 |