

NORTH BEACH WATER DISTRICT GENERAL MANAGERS REPORT

For October Meeting - 2022

Well Field Output

| | | | | | |
|--------------------------|----|---------------------------|------------------------|----------------|-----------|
| <u>September 1, 2022</u> | to | <u>September 30, 2022</u> | NWF Master Meter: | <u>5.3462</u> | <i>mg</i> |
| | | | SWF Master Meter: | <u>7.0829</u> | <i>mg</i> |
| | | | Total Pumped to Plant: | <u>12.4291</u> | <i>MG</i> |

August Water Plant Production

Data:

Data Period

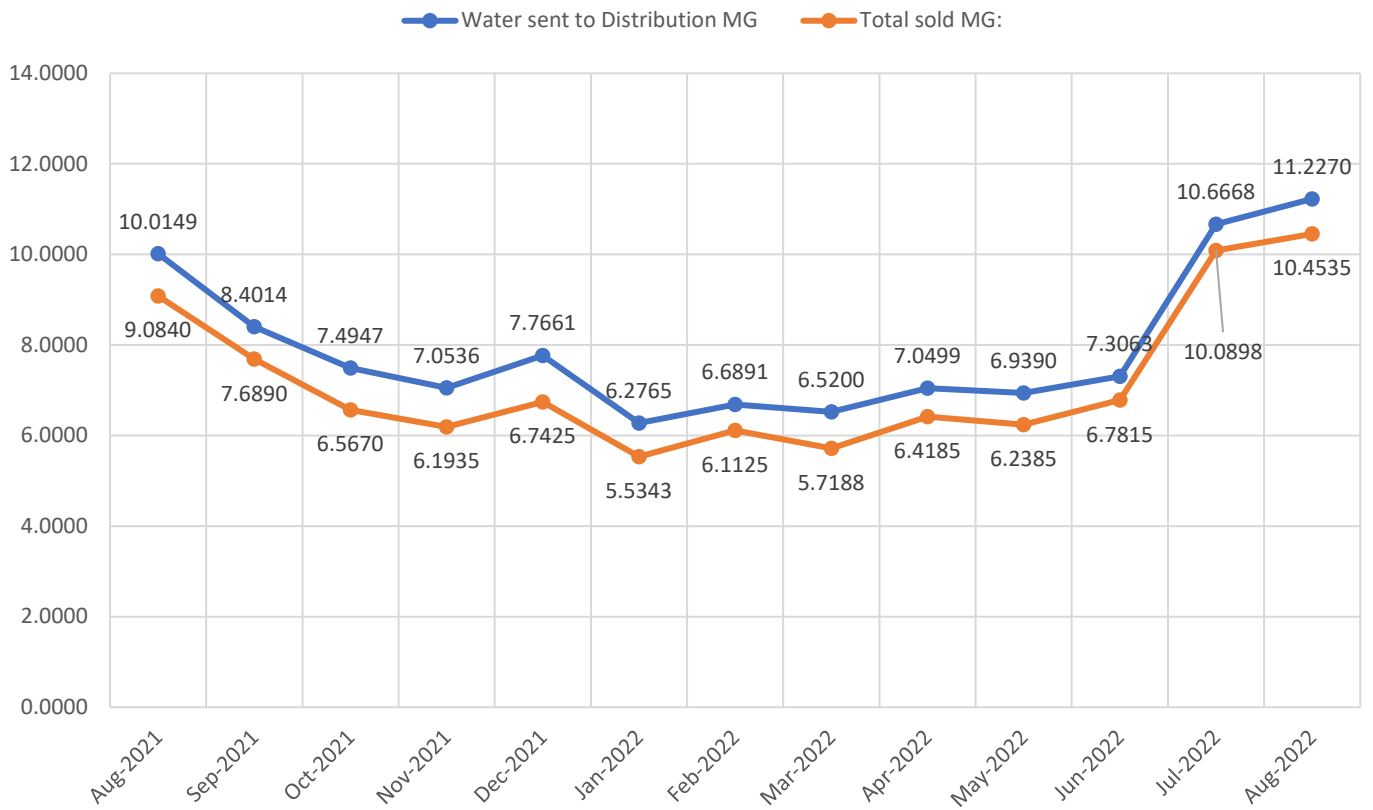
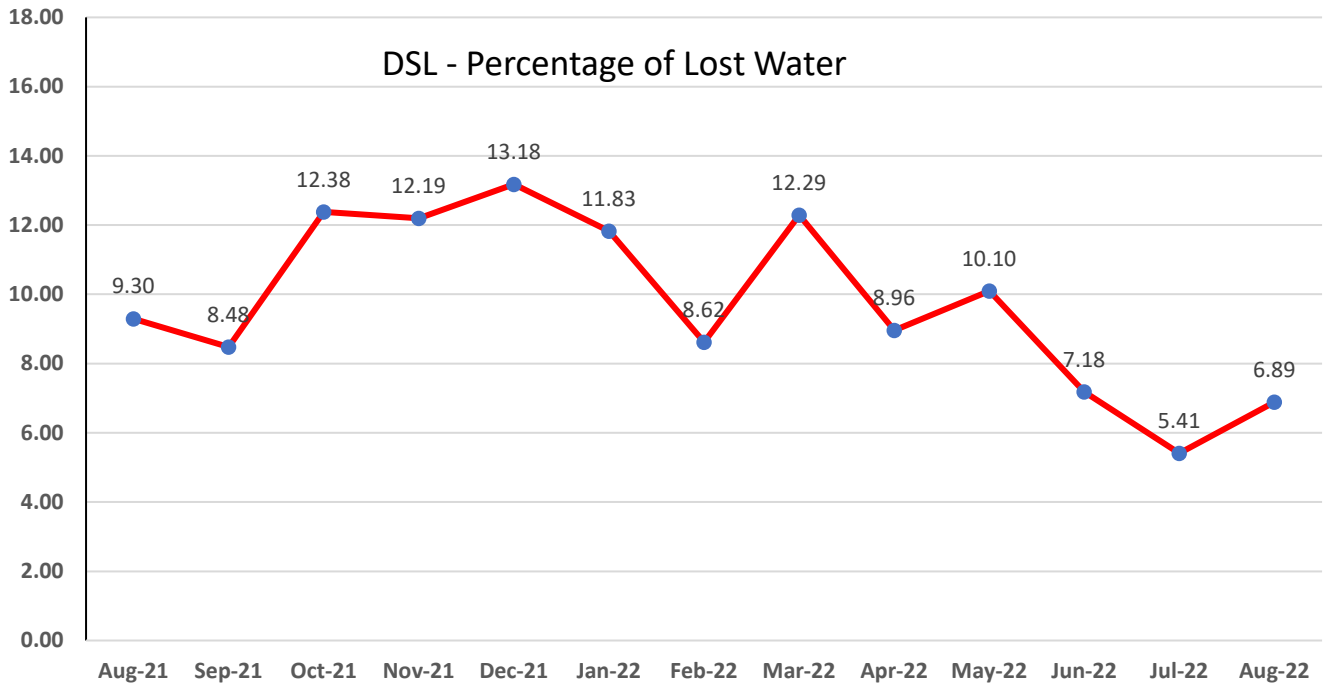
| | | | | | |
|-----------------------|----|------------------------|----------------------|----------------|-----------|
| <u>August 1, 2022</u> | to | <u>August 31, 2022</u> | NWF Master Meter: | <u>6.7799</u> | <i>mg</i> |
| | | | SWF Master Meter: | <u>7.0385</u> | <i>mg</i> |
| | | | Accounted for Water: | <u>2.5914</u> | <i>MG</i> |
| | | | Total Water Pumped: | <u>13.8184</u> | <i>MG</i> |

Metering Period

| | | | | | |
|-----------------------|----|------------------------|--------------------|----------------|-----------|
| <u>August 1, 2022</u> | to | <u>August 31, 2022</u> | Total Water Sold : | <u>10.4535</u> | <i>MG</i> |
|-----------------------|----|------------------------|--------------------|----------------|-----------|

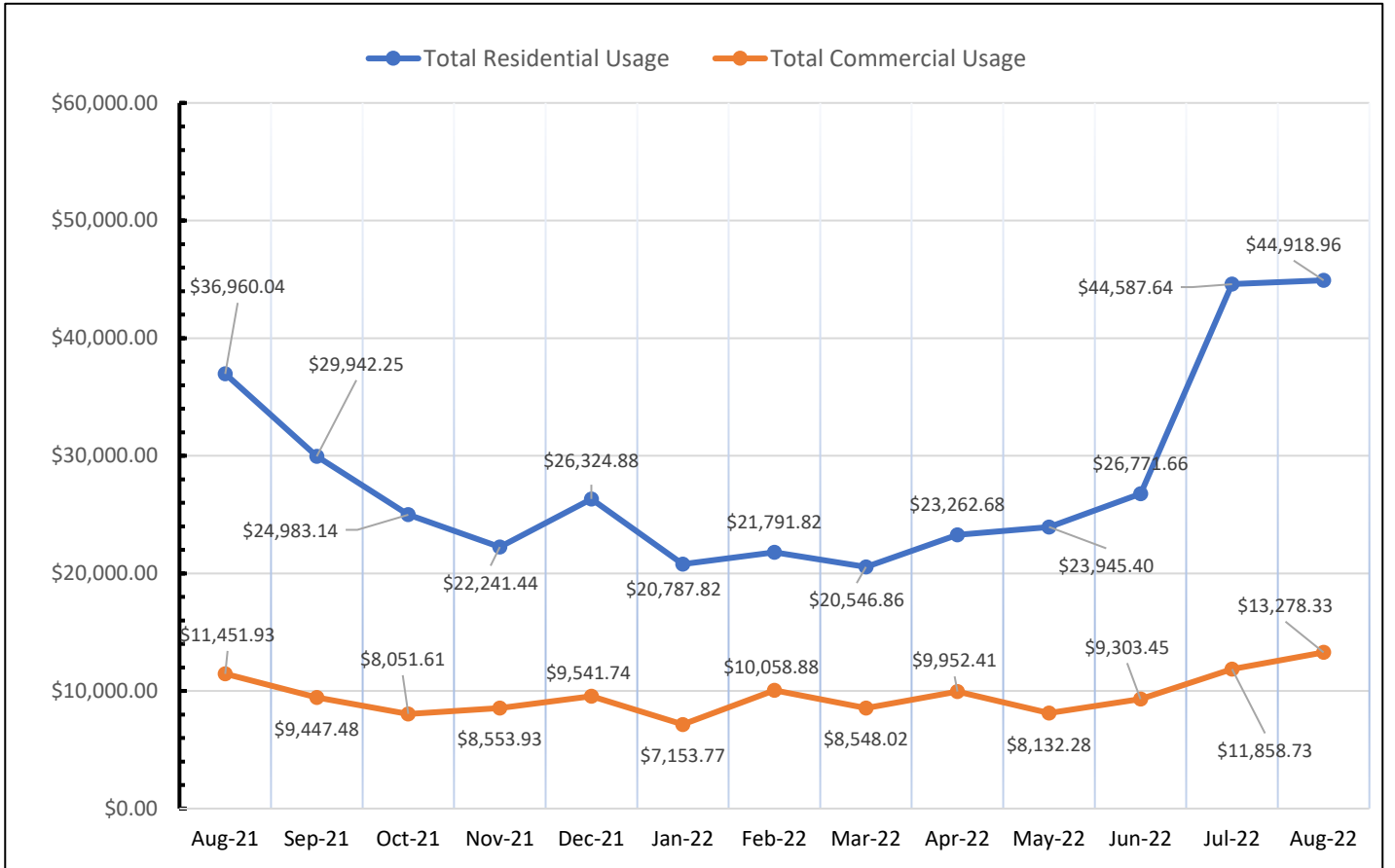
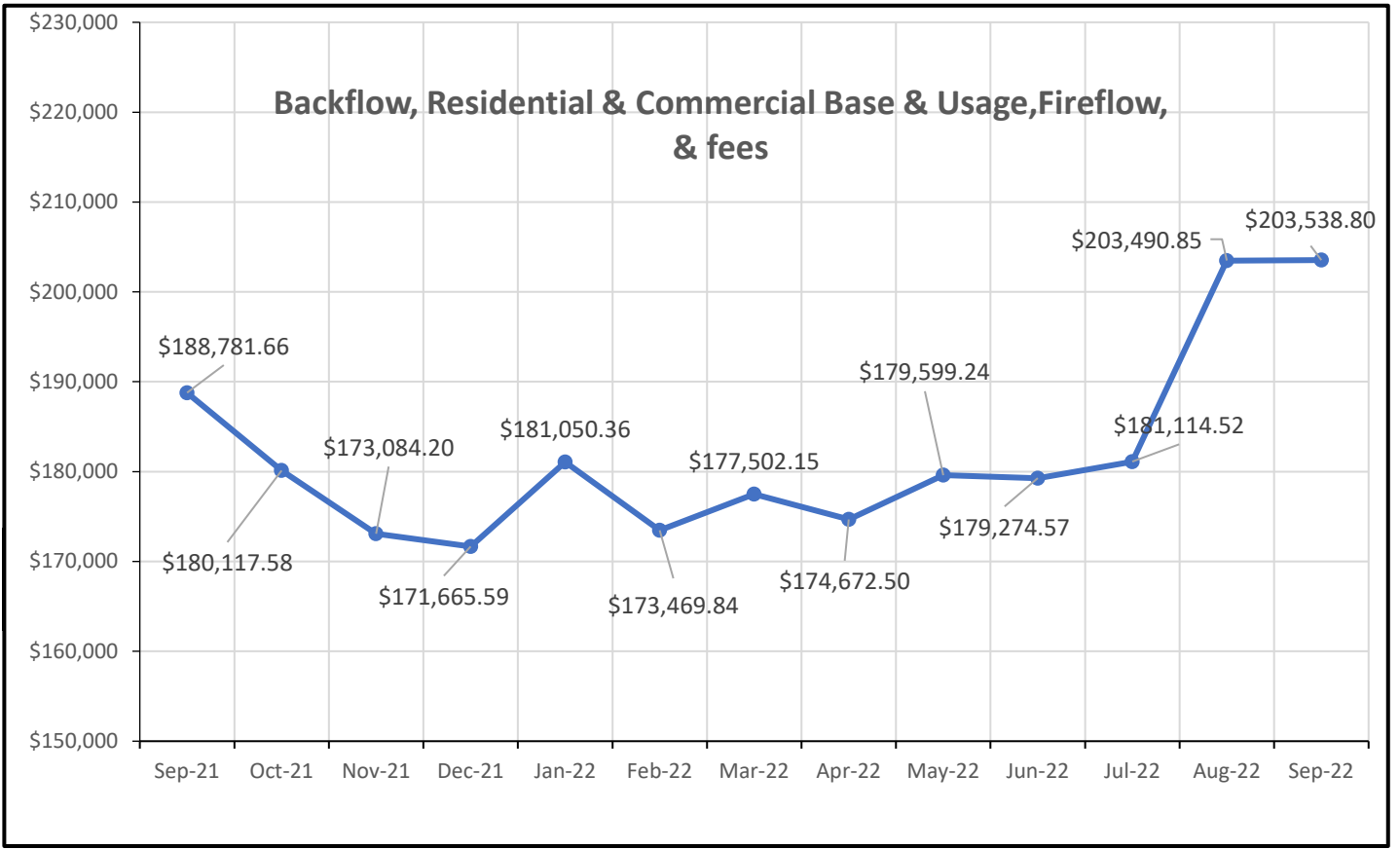
August's Accounted for Water:

| | | | |
|---|---|----------------|-----------|
| | NWF Backwash : | <u>0.2684</u> | <i>mg</i> |
| | SWF Backwash : | <u>1.4166</u> | <i>mg</i> |
| Distribution Flushing, Fire Dept, Pac Co & Waterline Leak Repair's: | | <u>0.7117</u> | <i>mg</i> |
| | NBWD use NWF & SWF: | <u>0.1947</u> | <i>mg</i> |
| | Total Accounted for Water: | <u>2.5914</u> | <i>MG</i> |
| | Total Water Treated : | <u>13.8184</u> | <i>MG</i> |
| | Accounted for Water Used : | <u>2.5914</u> | <i>MG</i> |
| | Water Sent to Distribution : | <u>11.2270</u> | <i>MG</i> |
| | Water Sold : | <u>10.4535</u> | <i>MG</i> |
| | Distribution Leakage : | <u>0.7735</u> | <i>MG</i> |
| | Percent of Unaccounted for Water : | <u>6.89</u> | <i>%</i> |

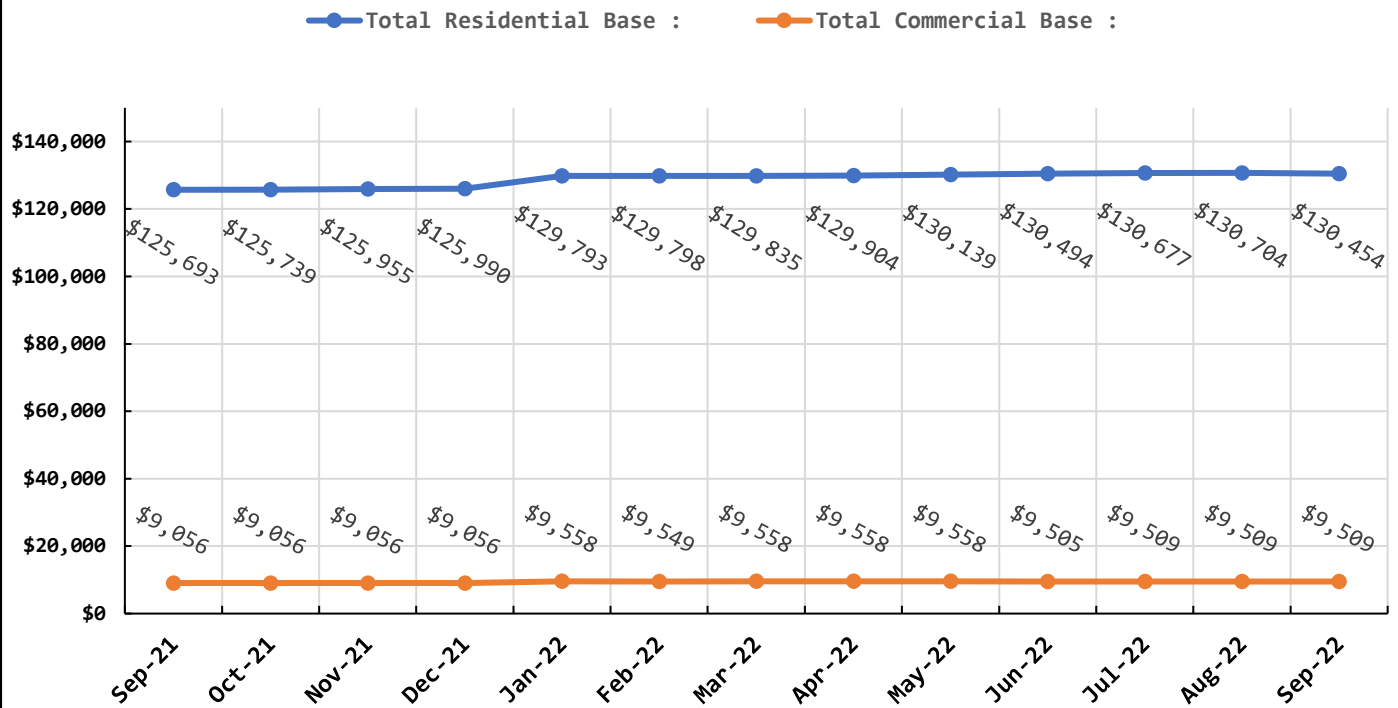


| Data Period | September 1 - 30, 2022 | | Booster System Data | |
|-------------|---|---------|---------------------|------------|
| | North Wellfield Booster High GPM : | 1,031 | | <i>gpm</i> |
| | North Wellfield Booster Average GPM : | 113 | | <i>gpm</i> |
| | North Wellfield High psi: | 68 | | <i>psi</i> |
| | North Wellfield Average psi: | 60 | | <i>psi</i> |
| | Total MG Booster pumped to Distribution at NWF: | 4.9196 | | <i>MG</i> |
| | Total MG Booster pumped to Distribution at SWF: | 6.4607 | | <i>MG</i> |
| | Total Booster Pumped to Distribution : | 11.3803 | | <i>MG</i> |
| | South Wellfield Booster High gpm: | 1,356 | | <i>gpm</i> |
| | South Wellfield Booster Average gpm: | 156 | | <i>gpm</i> |
| | South Wellfield Booster High psi: | 71 | | <i>psi</i> |
| | South Wellfield Booster Average psi: | 61 | | <i>psi</i> |
| | 245th Distribution Pressure Readings : | | | |
| | Highest | 70 | | <i>psi</i> |
| | Lowest | 37 | | <i>psi</i> |
| | Average | 60 | | <i>psi</i> |

| Data Period | | | Accounts Data | | |
|-------------------------|-------|-----------|------------------------|--------------|----|
| September 1 - 30, 2022, | | | Residential Base | \$130,454.48 | \$ |
| August 1 - 31, 2022 | | | Residential Usage | \$44,918.96 | \$ |
| September 1 - 30, 2022, | | | Commercial Base | \$9,508.76 | \$ |
| August 1 - 31, 2022 | | | Commercial Usage | \$13,278.33 | \$ |
| Residential Accounts | 2,739 | <i>ea</i> | Fire Flow Rate | \$1,221.47 | \$ |
| Commercial Accounts | 99 | <i>ea</i> | Backflow Assembly Rate | \$378.80 | \$ |
| Fire Flow Accounts | 4 | <i>ea</i> | Other Fees & Charges | 3,778.00 | \$ |
| Backflow Accounts | 37 | <i>ea</i> | Total: | \$203,538.80 | \$ |



Residential & Commercial Base



| Data Period | September 1 - 30, 2022 | Operations Data |
|-------------|----------------------------------|-------------------------|
| | Past Due Accounts | 251 <i>ea</i> |
| | Properties with Liens | 21 <i>ea</i> |
| | Accounts Locked Off | 0 <i>ea</i> |
| | Water Main Locates | 20 <i>ea</i> |
| | Water Quality Complaints | 4 <i>ea</i> |
| | Customer Service Calls | 68 <i>ea</i> |
| | Customer Valves Installed | 0 <i>ea</i> |
| | New Services Installed | 3 <i>ea</i> |
| | NBWD Office & Grounds Water Use: | <u>0.1947</u> <i>MG</i> |

Data Period

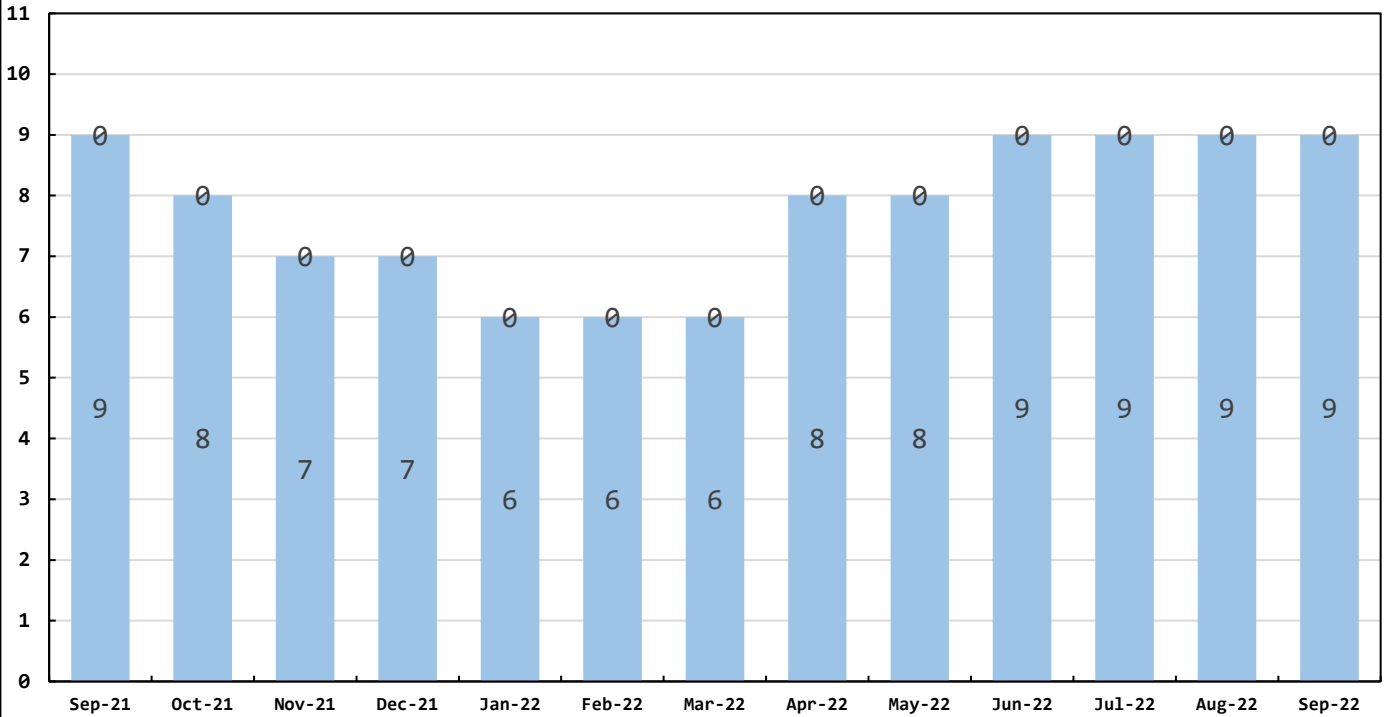
September 1 - 30, 2022

Water Quality Data

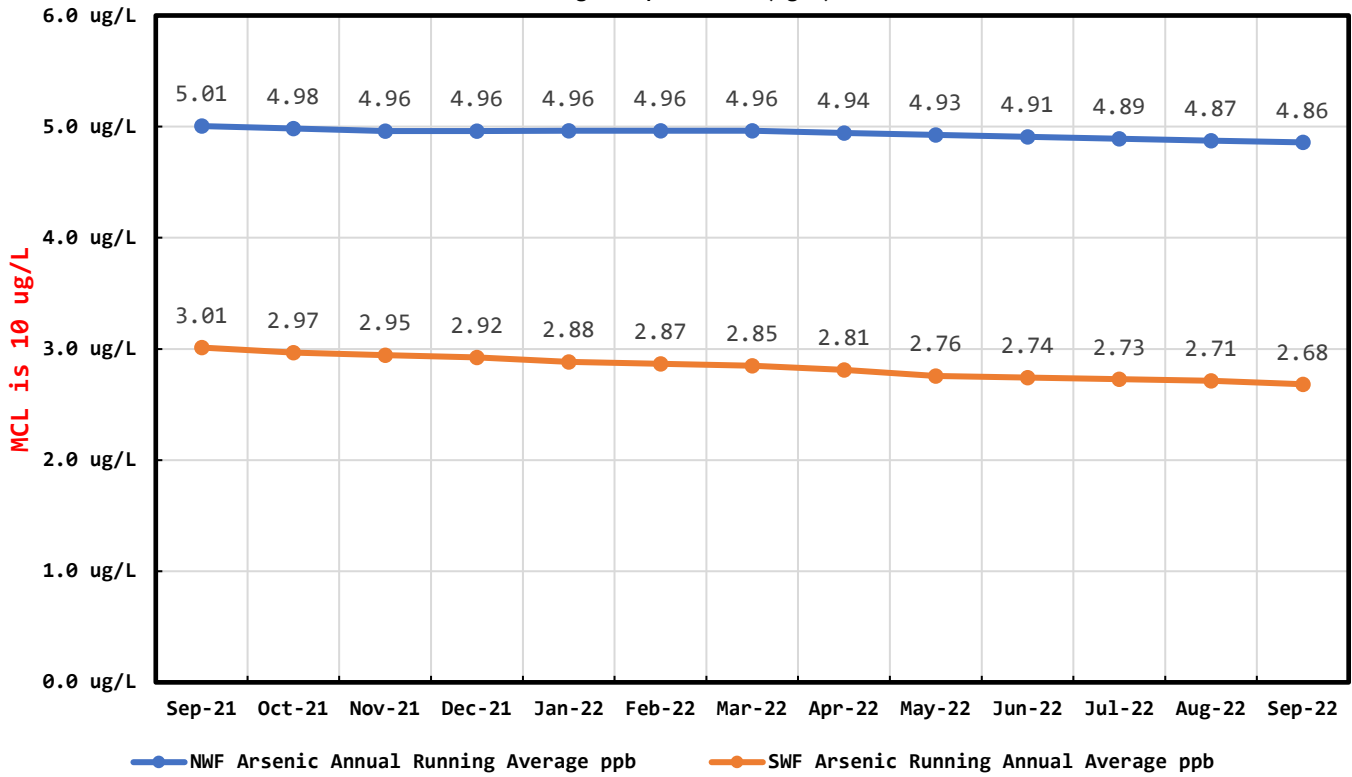
| | | |
|------------------------------------|------|-------------|
| Coliform Samples Collected | 9 | <i>ea</i> |
| Coliform Samples Absent | 9 | <i>ea</i> |
| Coliform Samples Postive | 0 | <i>ea</i> |
| Coliform Sample Positive E.coli | 0 | <i>ea</i> |
| NWF Arsenic | 4.00 | <i>ug/L</i> |
| SWF Arsenic | 1.00 | <i>ug/L</i> |
| NWF Arsenic Annual Running Average | 4.83 | <i>ug/L</i> |
| SWF Arsenic Running Annual Average | 2.64 | <i>ug/L</i> |

Coliform Bacteria Samples

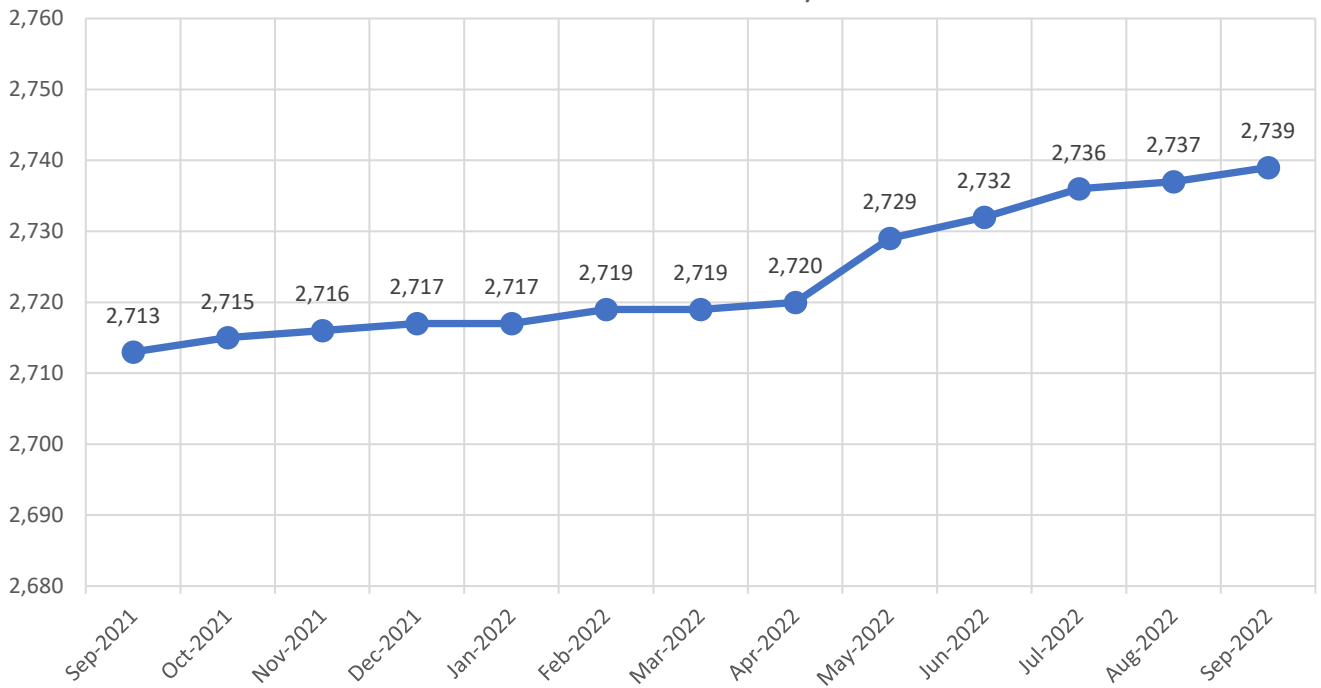
■ Coliform Samples Collected ■ Coliform Samples Positive



Arsenic Monthly Annual Average micrograms per liter (ug/L)



Residential Connections: 3/4" & 1"



General Managers Report for October 2022 meeting

- Installing services has been our focus.
- Spindle replaced on dump truck. Now waiting for parts.
- Preparing 2023's budget.

September Work Orders

| | |
|----------------------------------|-----------|
| Read/Leave On | 15 |
| Turn Off/Lock – Customer Request | 9 |
| Turn Off/Lock – Non-Payment | 0 |
| Interrogate Meter | 13 |
| Locates | 20 |
| Unlock/Turn On | 11 |
| Test Backflow | 3 |
| Miscellaneous | 1 |
| Replace Meter Box | 1 |
| Low Pressure | 1 |
| Check Customer Valves | 0 |
| Dirty Water Complaints | 4 |
| Replace Meter | 1 |
| Install New Service | 3 |
| Assist Customer | 3 |
| Check For Leak | 8 |
| Re-Read Meter | 0 |
| Install Customer Control Valve | 0 |
| Total | 93 |