

NORTH BEACH WATER DISTRICT GENERAL MANAGERS REPORT

For November Meeting - 2022

Well Field Output

<u>October 1, 2022</u>	to	<u>October 31, 2022</u>	NWF Master Meter:	<u>4.3442</u>	<i>mg</i>
			SWF Master Meter:	<u>6.4582</u>	<i>mg</i>
			Total Pumped to Plant:	<u>10.8024</u>	<i>MG</i>

September Water Plant Production

Data:

Data Period

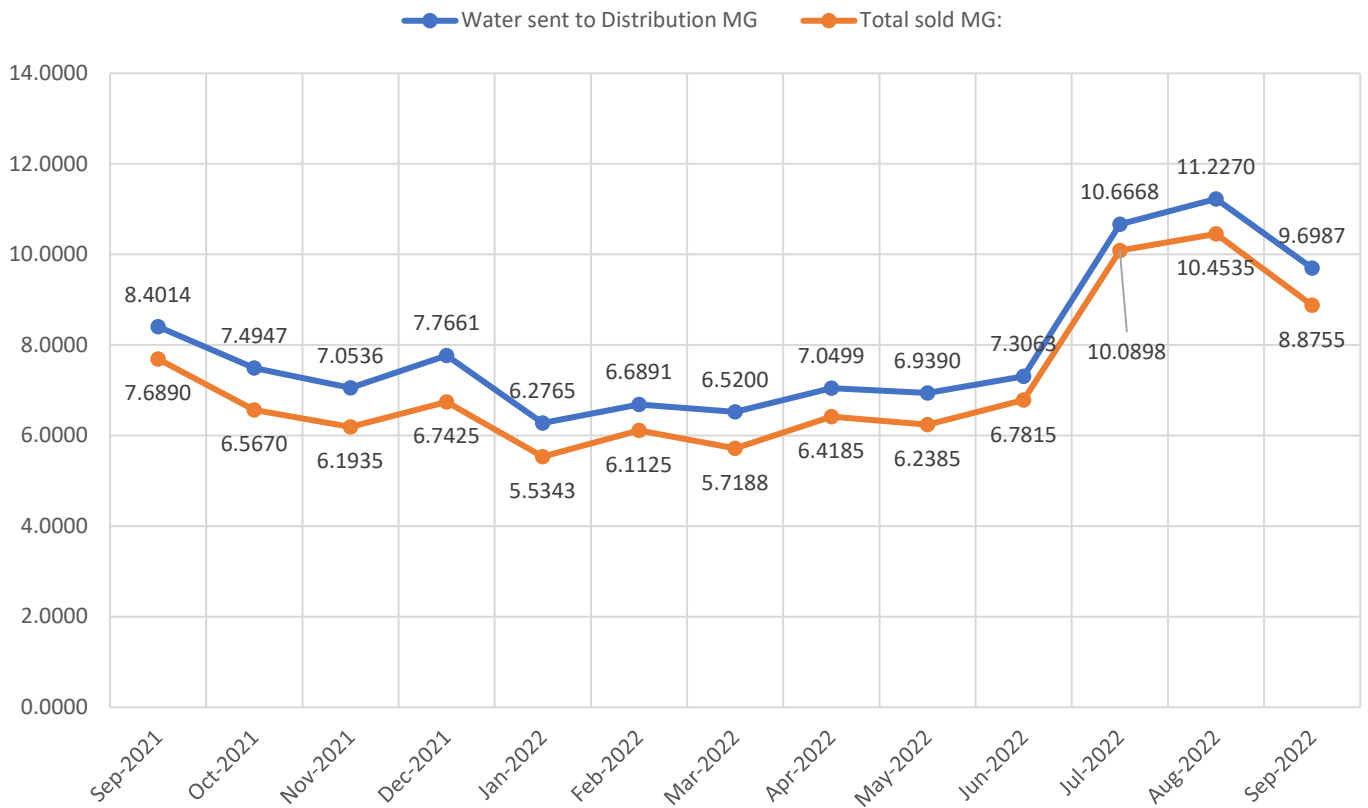
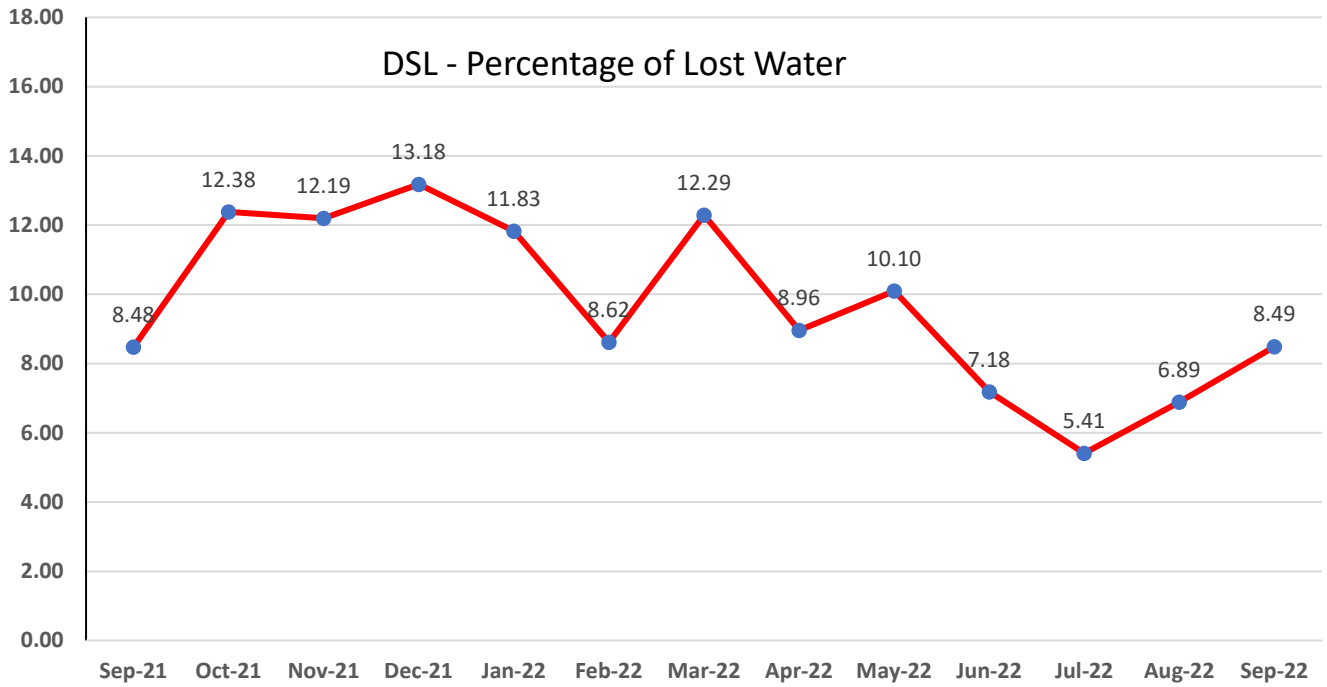
<u>September 1, 2022</u>	to	<u>September 30, 2022</u>	NWF Master Meter:	<u>5.3462</u>	<i>mg</i>
			SWF Master Meter:	<u>7.0829</u>	<i>mg</i>
			Accounted for Water:	<u>2.7304</u>	<i>MG</i>
			Total Water Pumped:	<u>12.4291</u>	<i>MG</i>

Metering Period

<u>September 1, 2022</u>	to	<u>September 30, 2022</u>	Total Water Sold :	<u>8.8755</u>	<i>MG</i>
--------------------------	----	---------------------------	--------------------	---------------	-----------

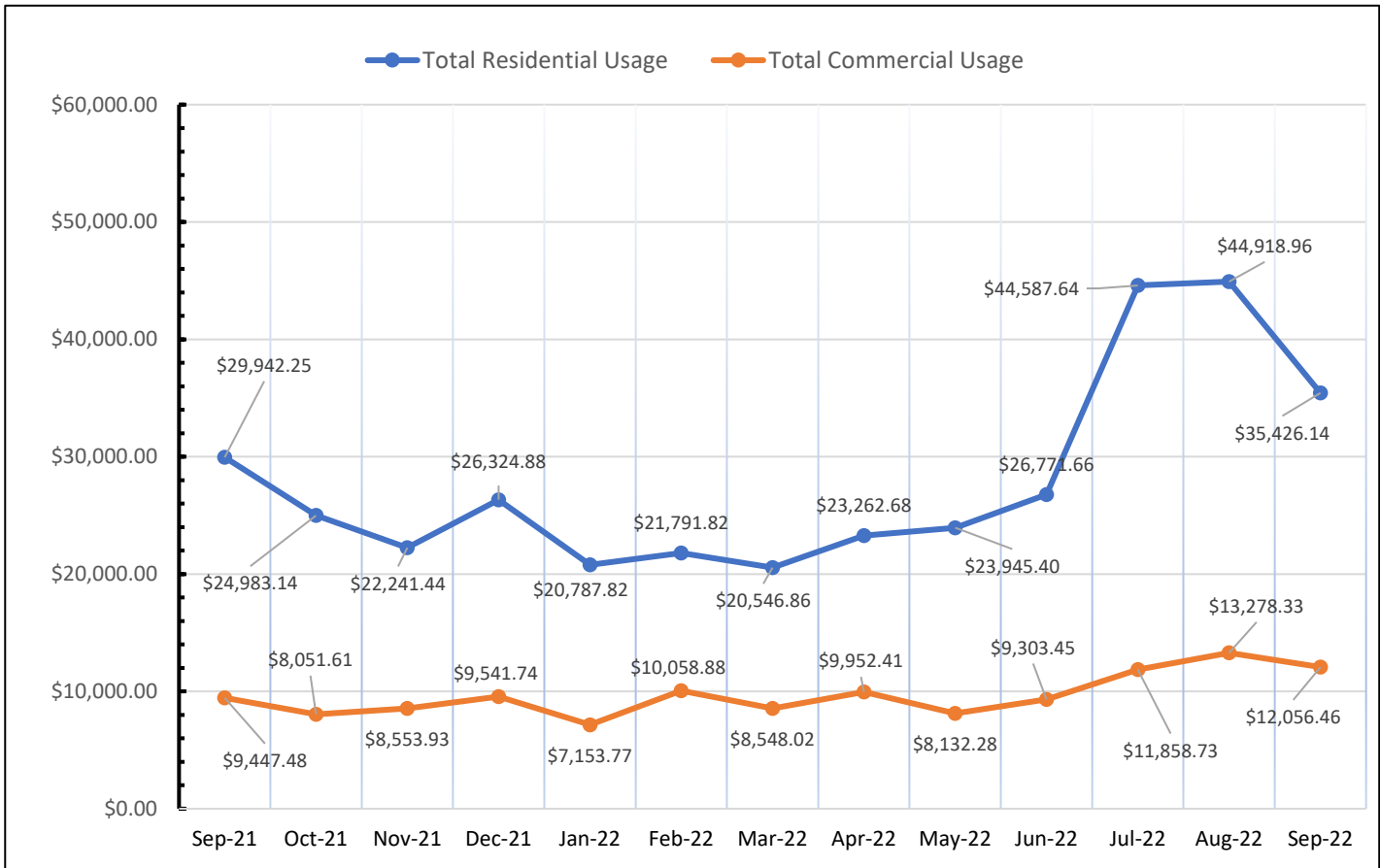
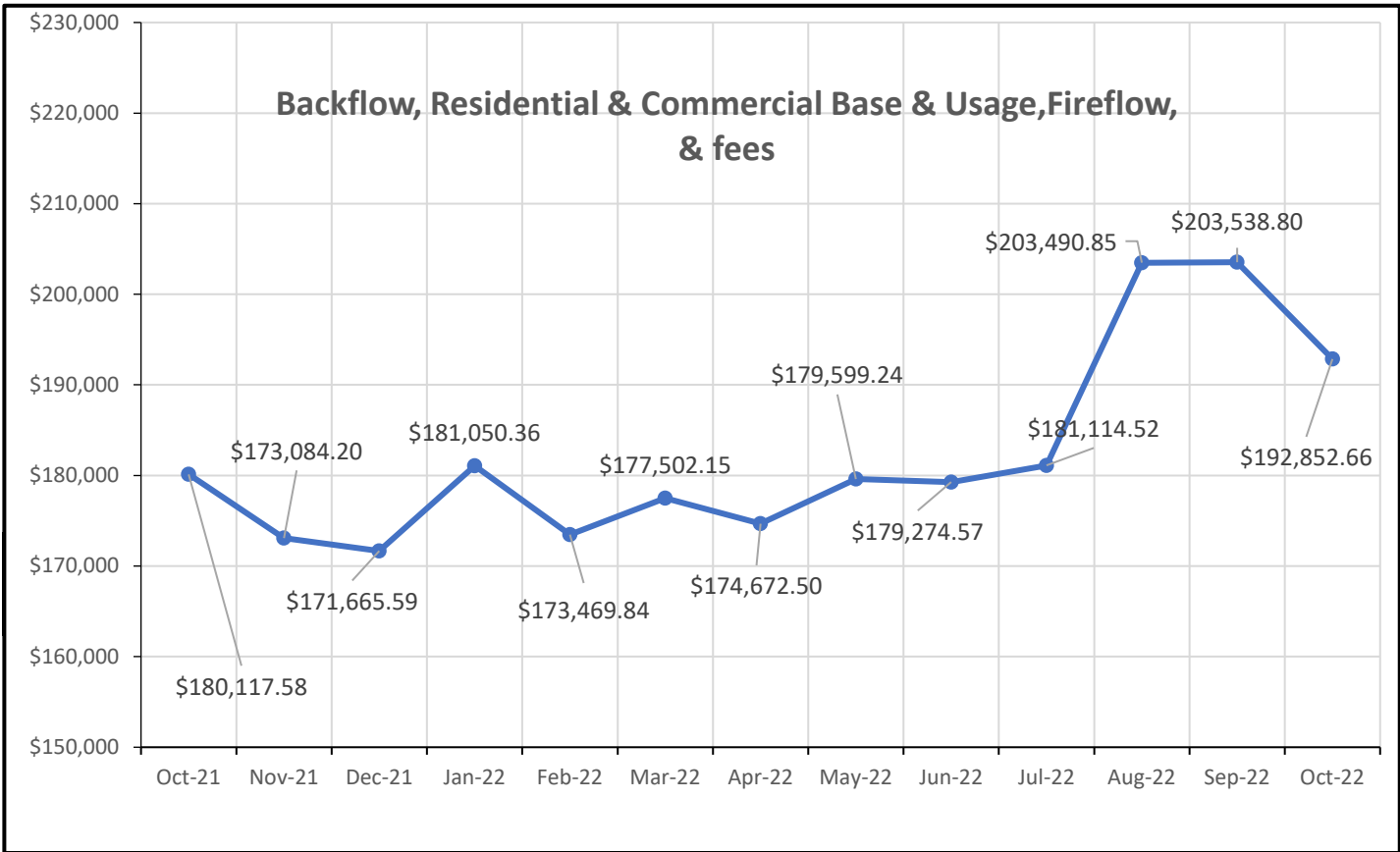
September's Accounted for Water:

	NWF Backwash :	<u>0.2695</u>		<i>mg</i>
	SWF Backwash :	<u>1.2589</u>		<i>mg</i>
Distribution Flushing, Fire Dept, Pac Co & Waterline Leak Repair's:		<u>0.9724</u>		<i>mg</i>
	NBWD use NWF & SWF:	<u>0.2296</u>		<i>mg</i>
	Total Accounted for Water:	<u>2.7304</u>		<i>MG</i>
	Total Water Treated :	<u>12.4291</u>		<i>MG</i>
	Accounted for Water Used :	<u>2.7304</u>		<i>MG</i>
	Water Sent to Distribution :	<u>9.6987</u>		<i>MG</i>
	Water Sold :	<u>8.8755</u>		<i>MG</i>
	Distribution Leakage :	<u>0.8232</u>		<i>MG</i>
	Percent of Unaccounted for Water :	<u>8.49</u>		<i>%</i>

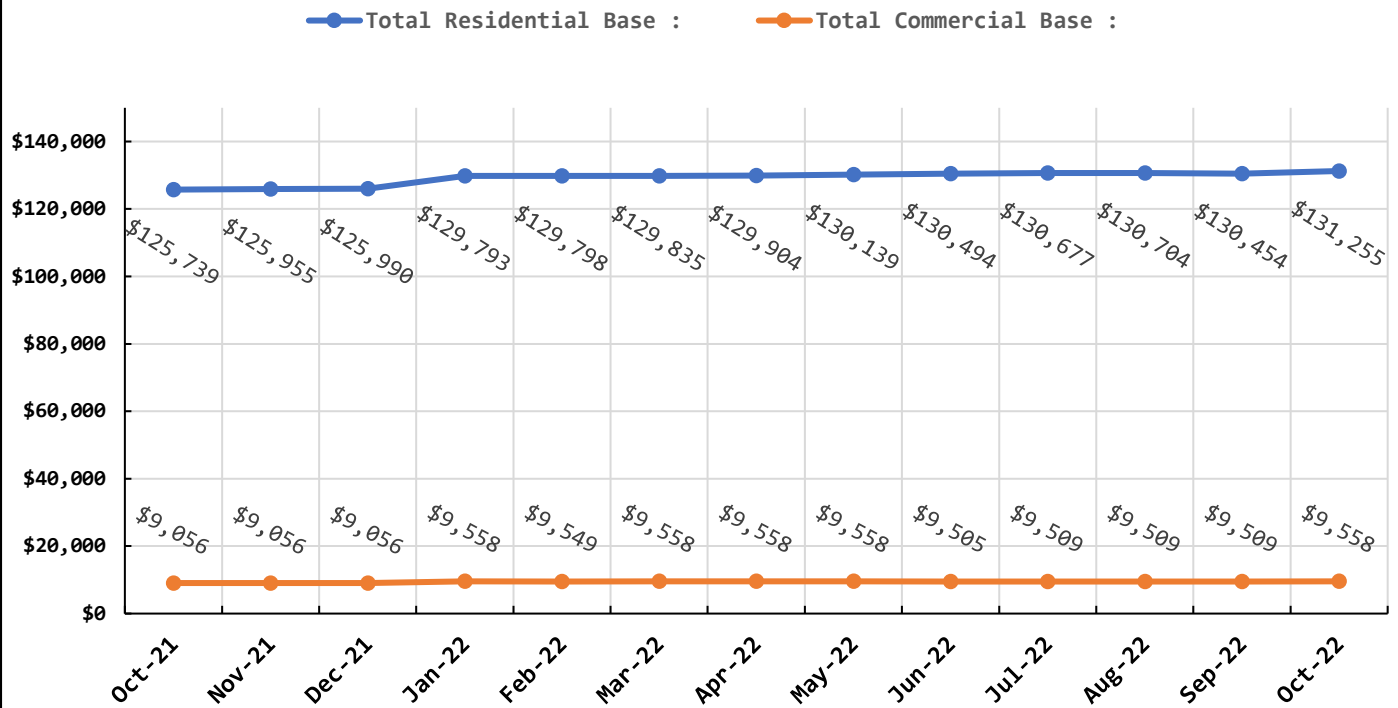


Data Period	October 1 - 31, 2022		Booster System Data	
	North Wellfield Booster High GPM :	1,456		<i>gpm</i>
	North Wellfield Booster Average GPM :	100		<i>gpm</i>
	North Wellfield High psi:	73		<i>psi</i>
	North Wellfield Average psi:	61		<i>psi</i>
	Total MG Booster pumped to Distribution at NWF:	3.7852		<i>MG</i>
	Total MG Booster pumped to Distribution at SWF:	5.8100		<i>MG</i>
	Total Booster Pumped to Distribution :	9.5952		<i>MG</i>
	South Wellfield Booster High gpm:	1,547		<i>gpm</i>
	South Wellfield Booster Average gpm:	136		<i>gpm</i>
	South Wellfield Booster High psi:	84		<i>psi</i>
	South Wellfield Booster Average psi:	62		<i>psi</i>
	245th Distribution Pressure Readings :			
	Highest	70		<i>psi</i>
	Lowest	37		<i>psi</i>
	Average	60		<i>psi</i>

Data Period			Accounts Data		
October 1 - 31, 2022			Residential Base	\$131,255.44	\$
September 1 - 30, 2022			Residential Usage	\$35,426.14	\$
October 1 - 31, 2022			Commercial Base	\$9,558.35	\$
September 1 - 30, 2022			Commercial Usage	\$12,056.46	\$
Residential Accounts	2,754	ea	Fire Flow Rate	\$1,221.47	\$
Commercial Accounts	99	ea	Backflow Assembly Rate	\$454.80	\$
Fire Flow Accounts	4	ea	Other Fees & Charges	2,880.00	\$
Backflow Accounts	39	ea	Total:	\$192,852.66	\$

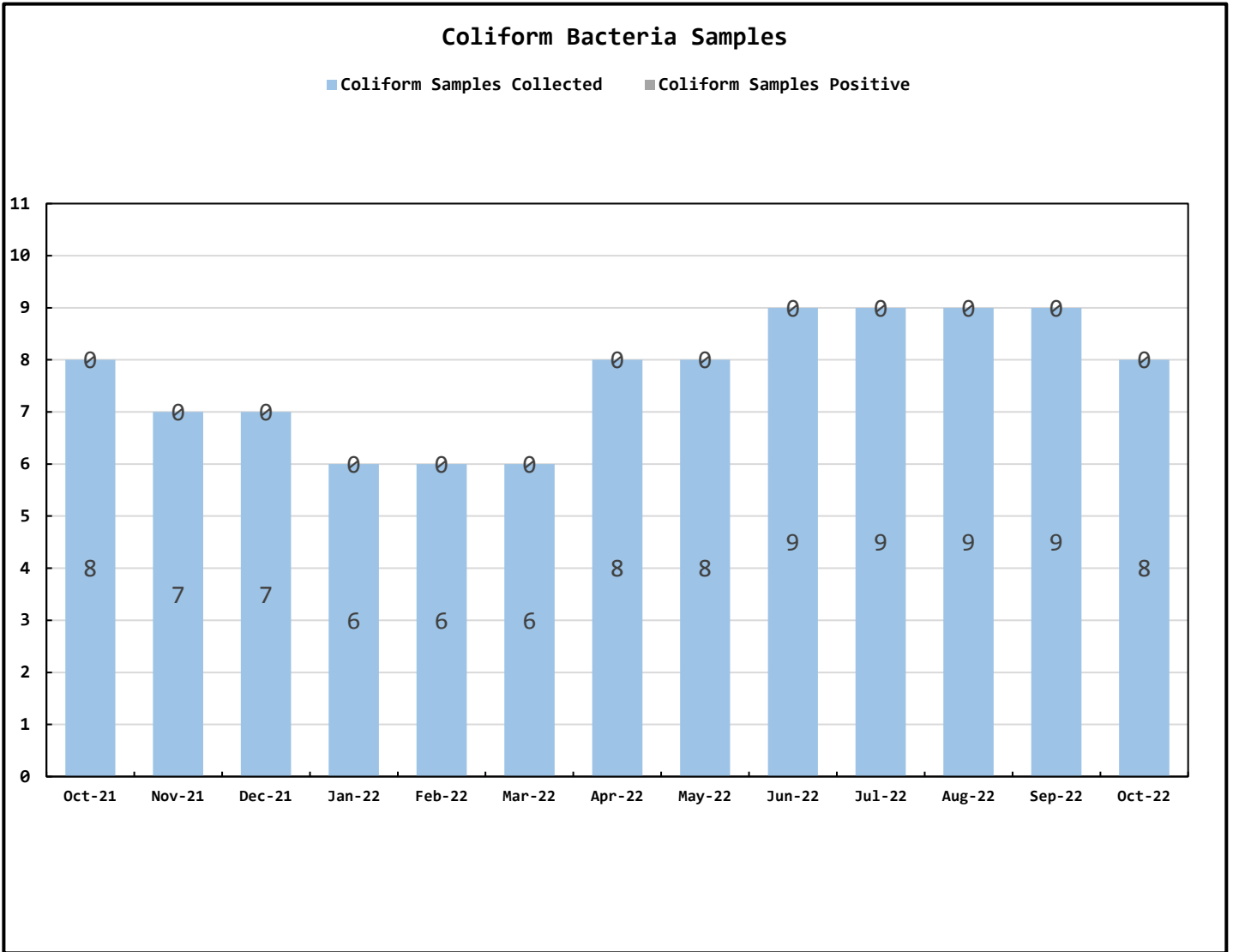


Residential & Commercial Base

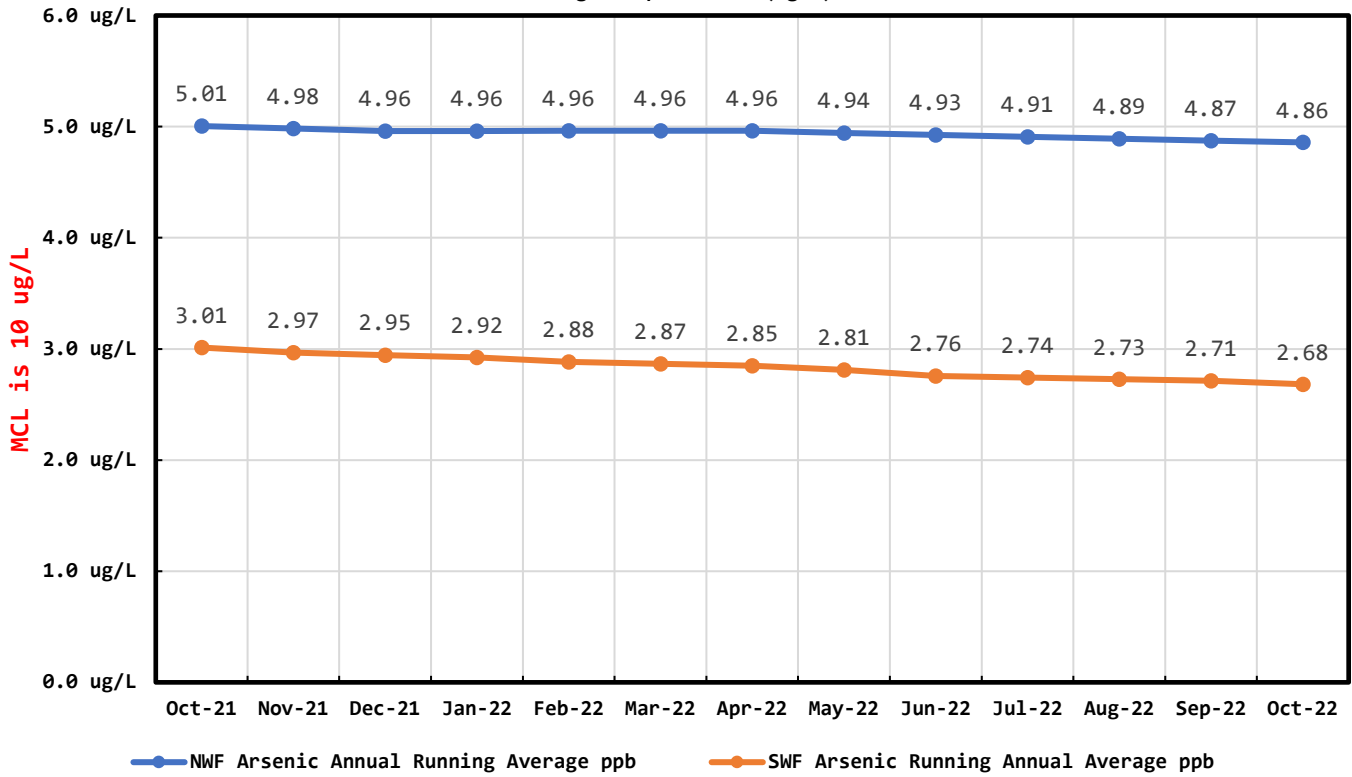


Data Period	October 1 - 31, 2022	Operations Data
	Past Due Accounts	223 <i>ea</i>
	Properties with Liens	22 <i>ea</i>
	Accounts Locked Off	6 <i>ea</i>
	Water Main Locates	26 <i>ea</i>
	Water Quality Complaints	2 <i>ea</i>
	Customer Service Calls	51 <i>ea</i>
	Customer Valves Installed	1 <i>ea</i>
	New Services Installed	17 <i>ea</i>
	NBWD Office & Grounds Water Use:	<u>0.2296</u> <i>MG</i>

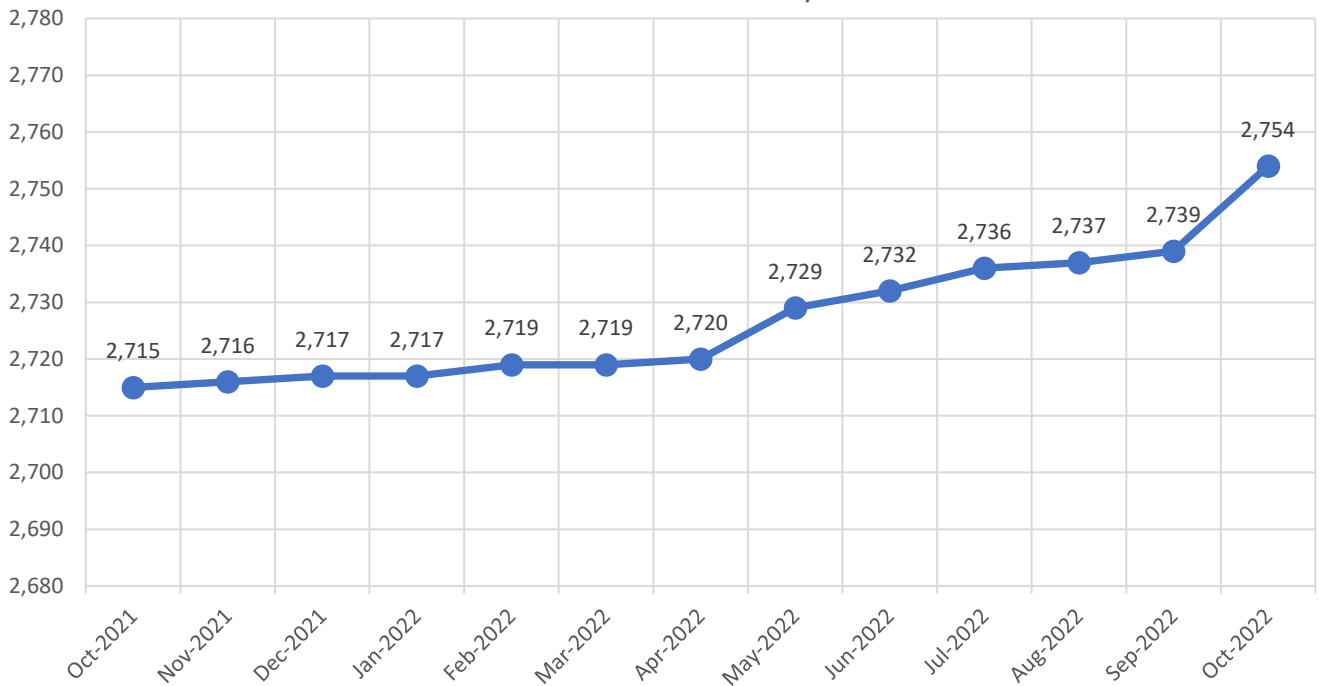
Data Period	October 1 - 31, 2022		Water Quality Data	
	Coliform Samples Collected	8		<i>ea</i>
	Coliform Samples Absent	8		<i>ea</i>
	Coliform Samples Postive	0		<i>ea</i>
	Coliform Sample Positive E.coli	0		<i>ea</i>
	NWF Arsenic	5.00		<i>ug/L</i>
	SWF Arsenic	2.00		<i>ug/L</i>
	NWF Arsenic Annual Running Average	4.83		<i>ug/L</i>
	SWF Arsenic Running Annual Average	2.63		<i>ug/L</i>



Arsenic Monthly Annual Average micrograms per liter (ug/L)



Residential Connections: 3/4" & 1"



General Managers Report for November 2022 Meeting

- Installing services has been our focus. Crew has been hustling to get services in that we have the brass for (15 in total). Brass should start coming in December and into the new year. This brass was ordered in April.
- Picking up parts for dump truck on Tuesday.
- Main Break on 273rd - October 19, 2022
Pacific County Road Dept assisted. They offered signage and the use of their automatic traffic control.
Surfside Water Dept assisted. It was great to see these entities help us out.
- Main Break at 273rd - November 8, 2022

This was 100 yards east of the HWY break. Crew responded at 8: 15pm and was repaired at 11:30pm.
- The night of this break November 8,2022. Earlier in the workday around 1:25 pm we discovered a leak in the floor of the north booster station.

We had shut off the BPS and the discharge valves to 270th & 272nd leaving just the south booster station on while we searched for the leak. We had figured out before the end of the day that the discharge line was in a loop and was going in a circle for whatever reason. I still cannot figure out why. We knew that it was coming from the south side, so we left that off and opened up the discharge on the north side to feed the system the night of the break.

That morning I called Pacific County to use there automatic flagging devices and they agreed to help us out and did the flagging for us to assist Bayview Paving while we dug around the yard to uncover all these wild pipe turns. We cut away 6 valves, eliminated 4 dead ends, and 110 ft of pipe. Plumbed backwash line directly into main, straightened discharge to distribution eliminating all these twists and turns which create friction loss. In other words, making our pumps work harder. Finished this repair November 10th,2022. Yard is still opened to remove other old pipes and valves.
- Trees at the south have been removed by Arbor Care.
- Road cuts paved at 280th & 281st - November 14, 2022.
- Main Break 245th and Birch - November 14, 2022.
- Mainline on Vernon. We went to pressure test and blew out the old valve gasket on 276th. Repaired November 16th, 2022.
- Pumps in our south booster station are making noise that reflect bearing and impeller wear. Getting bearings and impellers for all 4 pumps.

October Work Orders

Read/Leave On	8
Turn Off/Lock – Customer Request	6
Turn Off/Lock – Non-Payment	6
Interrogate Meter	8
Locates	26
Unlock/Turn On	8
Test Backflow	3
Miscellaneous	2
Replace Meter Box	0
Low Pressure	0
Check Customer Valves	0
Dirty Water Complaints	2
Replace Meter	7
Install New Service	17
Assist Customer	1
Check For Leak	4
Re-Read Meter	0
Install Customer Control Valve	1
Total	99