

NORTH BEACH WATER DISTRICT GENERAL MANAGERS REPORT

For January Meeting - 2023

Well Field Output

<u>December 1, 2022</u>	to	<u>December 31, 2022</u>	NWF Master Meter:	<u>4.8233</u>	<i>mg</i>
			SWF Master Meter:	<u>4.0490</u>	<i>mg</i>
			Total Pumped to Plant:	<u>8.8723</u>	<i>MG</i>

October Water Plant Production

Data:

Data Period

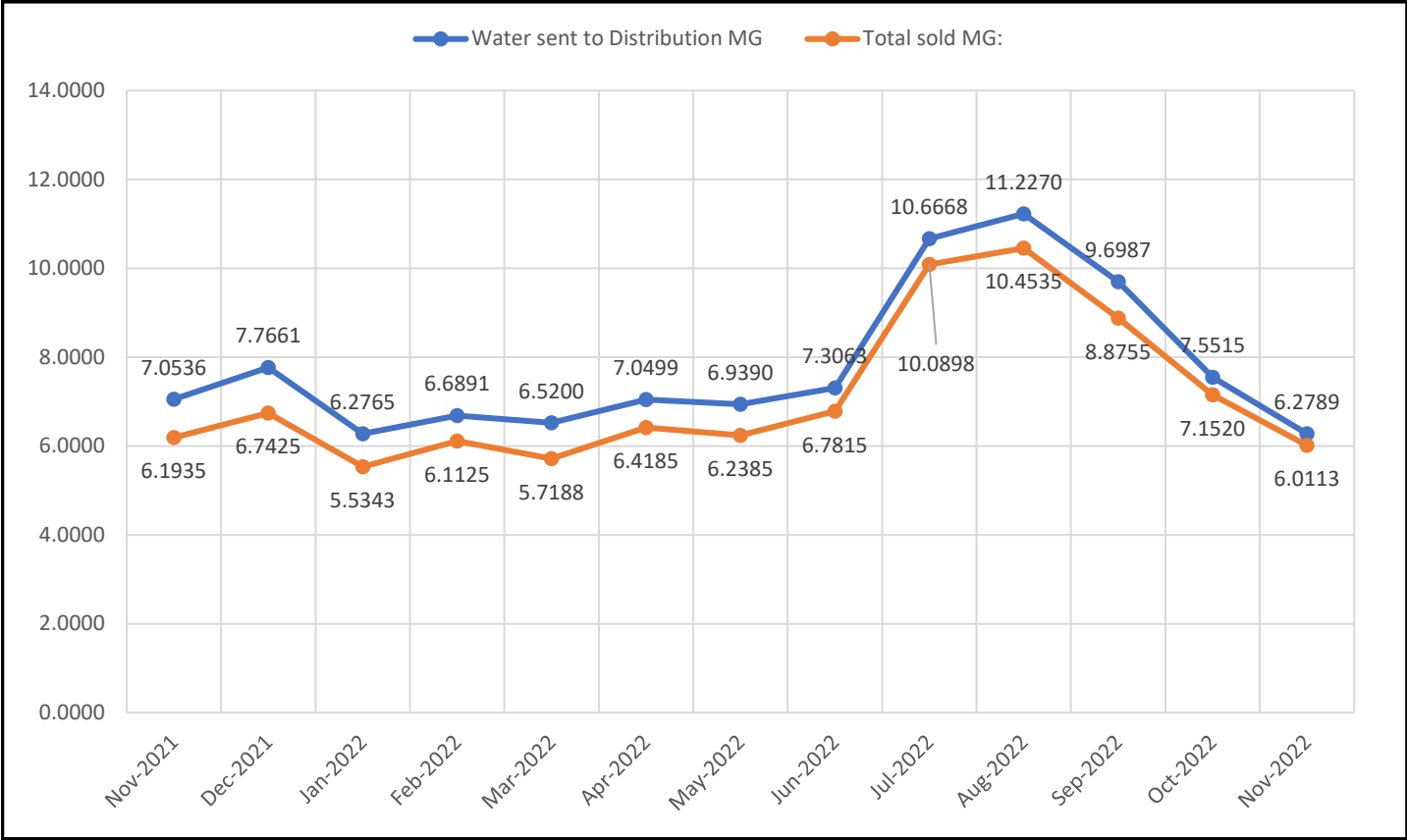
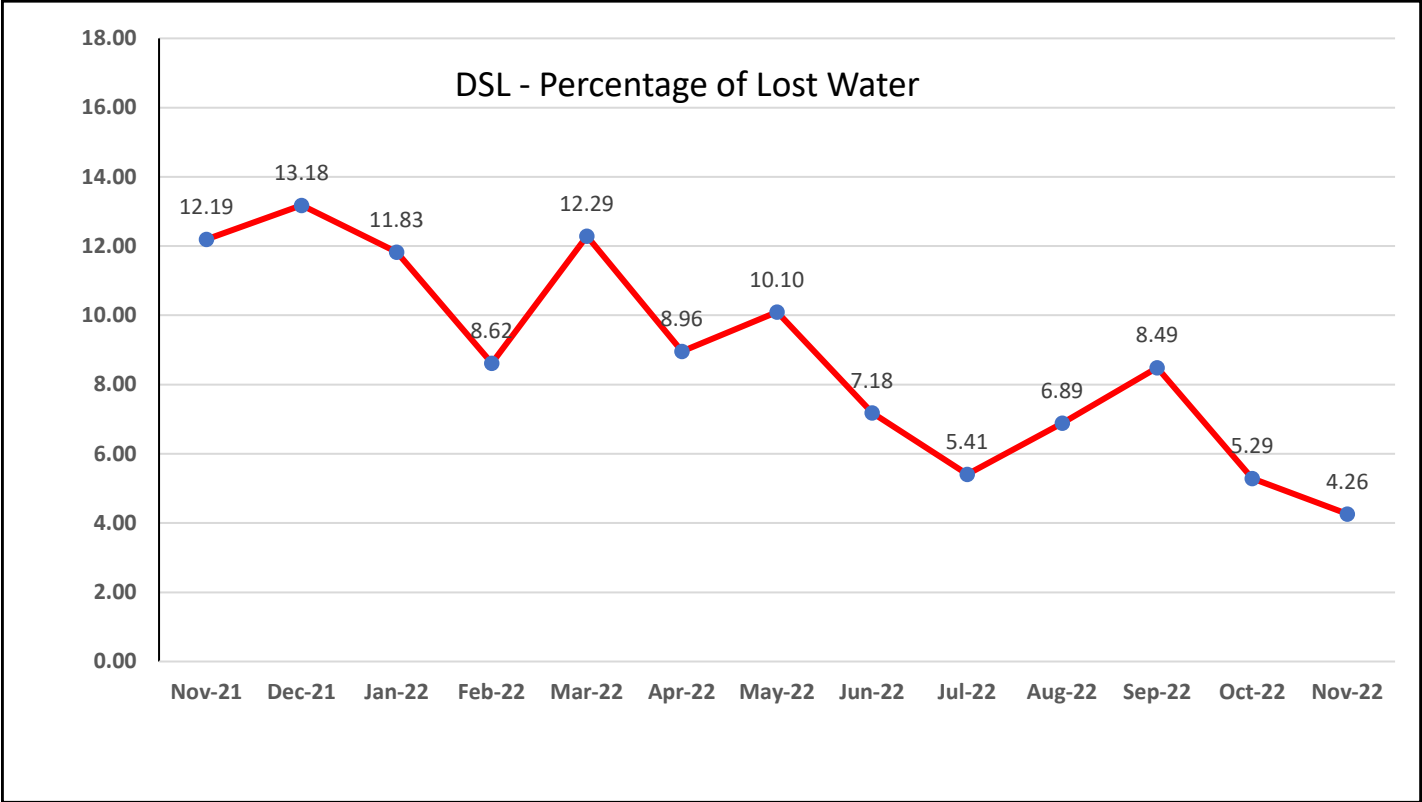
<u>November 1, 2022</u>	to	<u>November 30, 2022</u>	NWF Master Meter:	<u>4.4160</u>	<i>mg</i>
			SWF Master Meter:	<u>4.4861</u>	<i>mg</i>
			Accounted for Water:	<u>2.6232</u>	<i>MG</i>
			Total Water Pumped:	<u>8.9021</u>	<i>MG</i>

Metering Period

<u>November 1, 2022</u>	to	<u>November 30, 2022</u>	Total Water Sold :	<u>6.0113</u>	<i>MG</i>
-------------------------	----	--------------------------	--------------------	---------------	-----------

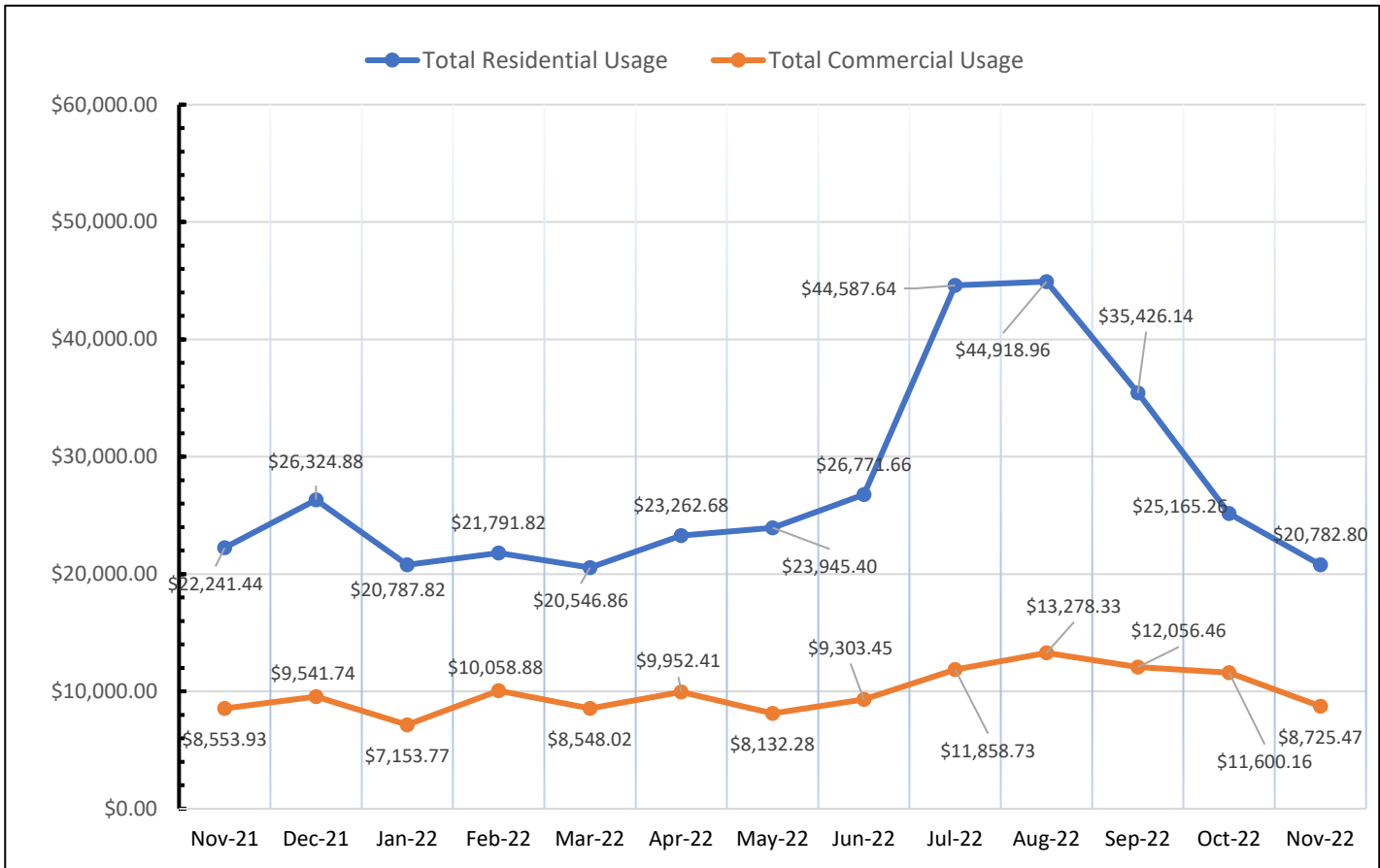
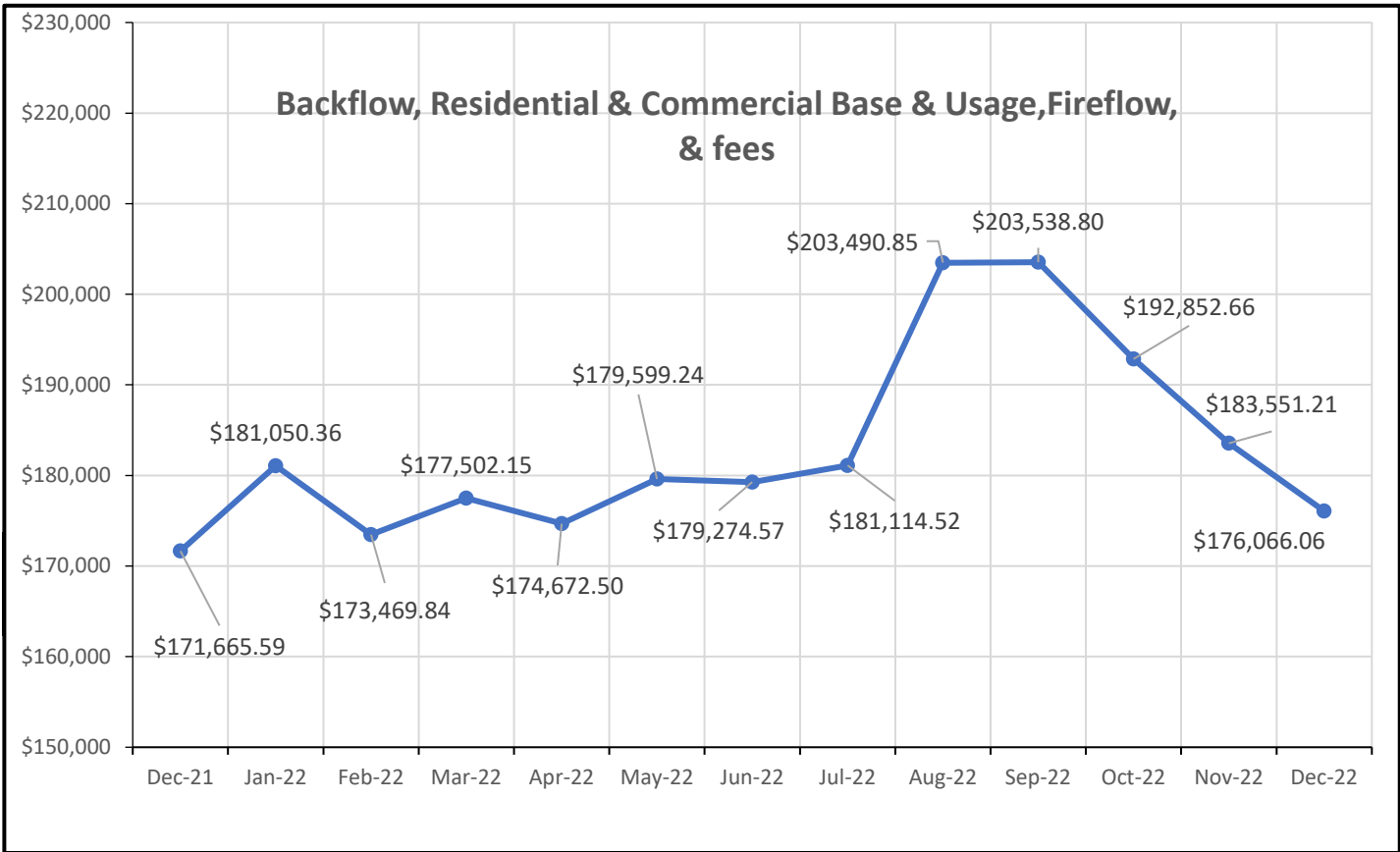
October's Accounted for Water:

	NWF Backwash :	<u>0.2205</u>	<i>mg</i>
	SWF Backwash :	<u>0.8229</u>	<i>mg</i>
Distribution Flushing, Fire Dept, Pac Co & Waterline Leak Repair's:		<u>1.2544</u>	<i>mg</i>
	NBWD use NWF & SWF:	<u>0.3254</u>	<i>mg</i>
	Total Accounted for Water:	<u>2.6232</u>	<i>MG</i>
	Total Water Treated :	<u>8.9021</u>	<i>MG</i>
	Accounted for Water Used :	<u>2.6232</u>	<i>MG</i>
	Water Sent to Distribution :	<u>6.2789</u>	<i>MG</i>
	Water Sold :	<u>6.0113</u>	<i>MG</i>
	Distribution Leakage :	<u>0.2676</u>	<i>MG</i>
	Percent of Unaccounted for Water :	<u>4.26</u>	<i>%</i>

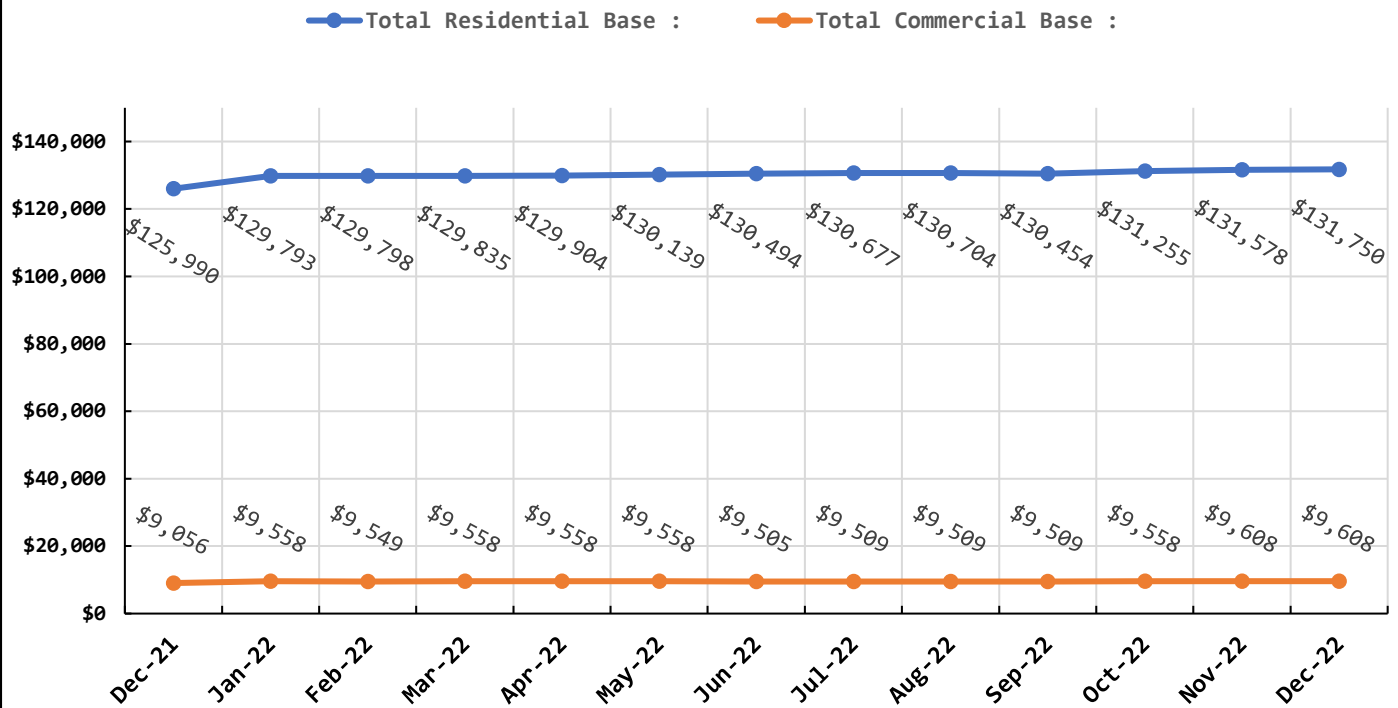


Data Period	December 1 - 31, 2022		Booster System Data	
	North Wellfield Booster High GPM :	989		<i>gpm</i>
	North Wellfield Booster Average GPM :	100		<i>gpm</i>
	North Wellfield High psi:	78		<i>psi</i>
	North Wellfield Average psi:	59		<i>psi</i>
	Total MG Booster pumped to Distribution at NWF:	4.4560		<i>MG</i>
	Total MG Booster pumped to Distribution at SWF:	3.5959		<i>MG</i>
	Total Booster Pumped to Distribution :	8.0519		<i>MG</i>
	South Wellfield Booster High gpm:	1,072		<i>gpm</i>
	South Wellfield Booster Average gpm:	86		<i>gpm</i>
	South Wellfield Booster High psi:	93		<i>psi</i>
	South Wellfield Booster Average psi:	61		<i>psi</i>
	245th Distribution Pressure Readings :			
	Highest	70		<i>psi</i>
	Lowest	37		<i>psi</i>
	Average	60		<i>psi</i>

Data Period			Accounts Data		
December 1 - 31, 2022			Residential Base	\$131,749.58	\$
November 1 - 30, 2022			Residential Usage	\$20,782.80	\$
December 1 - 31, 2022			Commercial Base	\$9,607.94	\$
November 1 - 30, 2022			Commercial Usage	\$8,725.47	\$
Residential Accounts	2,759	ea	Fire Flow Rate	\$1,221.47	\$
Commercial Accounts	101	ea	Backflow Assembly Rate	\$378.80	\$
Fire Flow Accounts	4	ea	Other Fees & Charges	\$3,600.00	\$
Backflow Accounts	37	ea	Total:	\$176,066.06	\$



Residential & Commercial Base



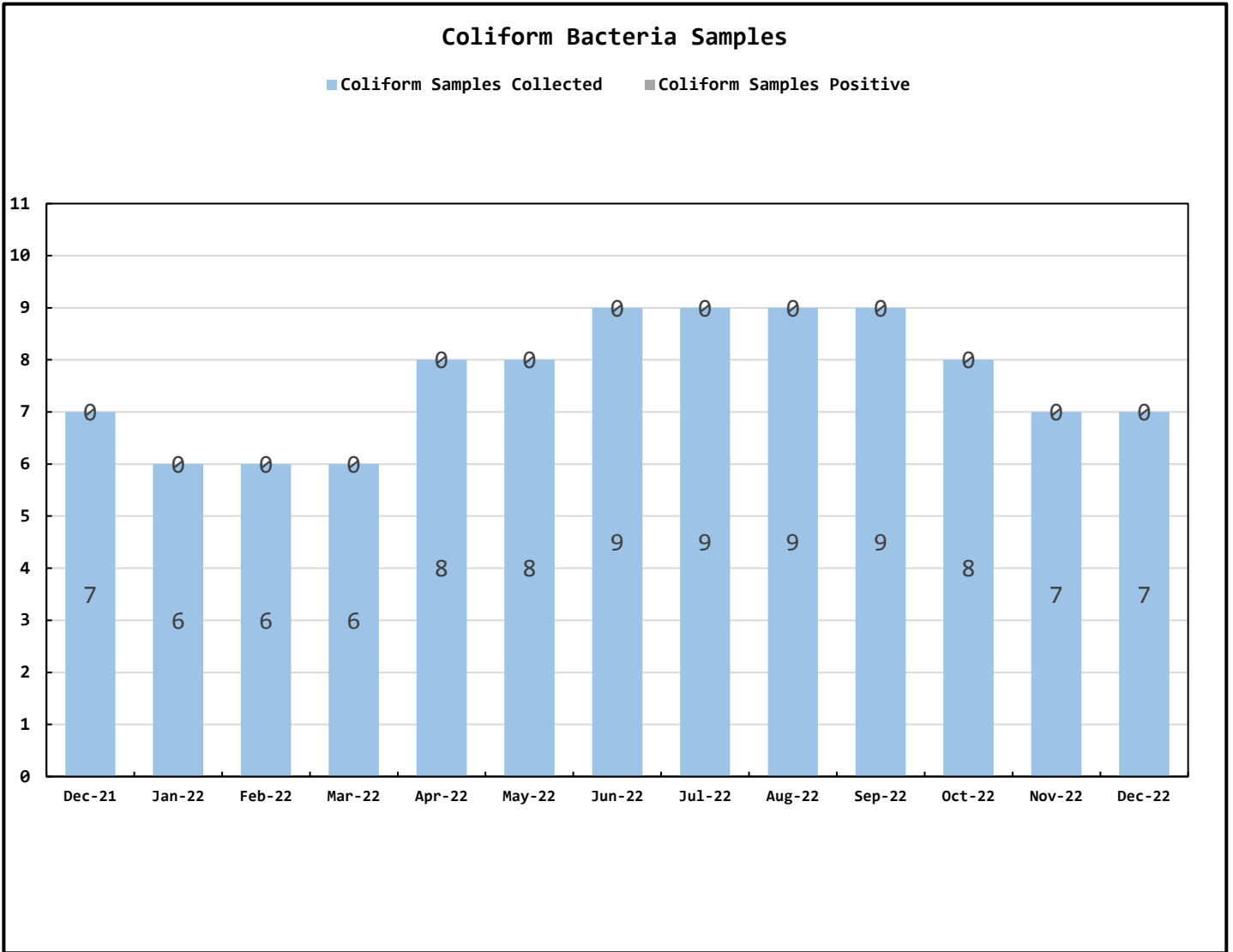
Data Period

December 1 - 31, 2022

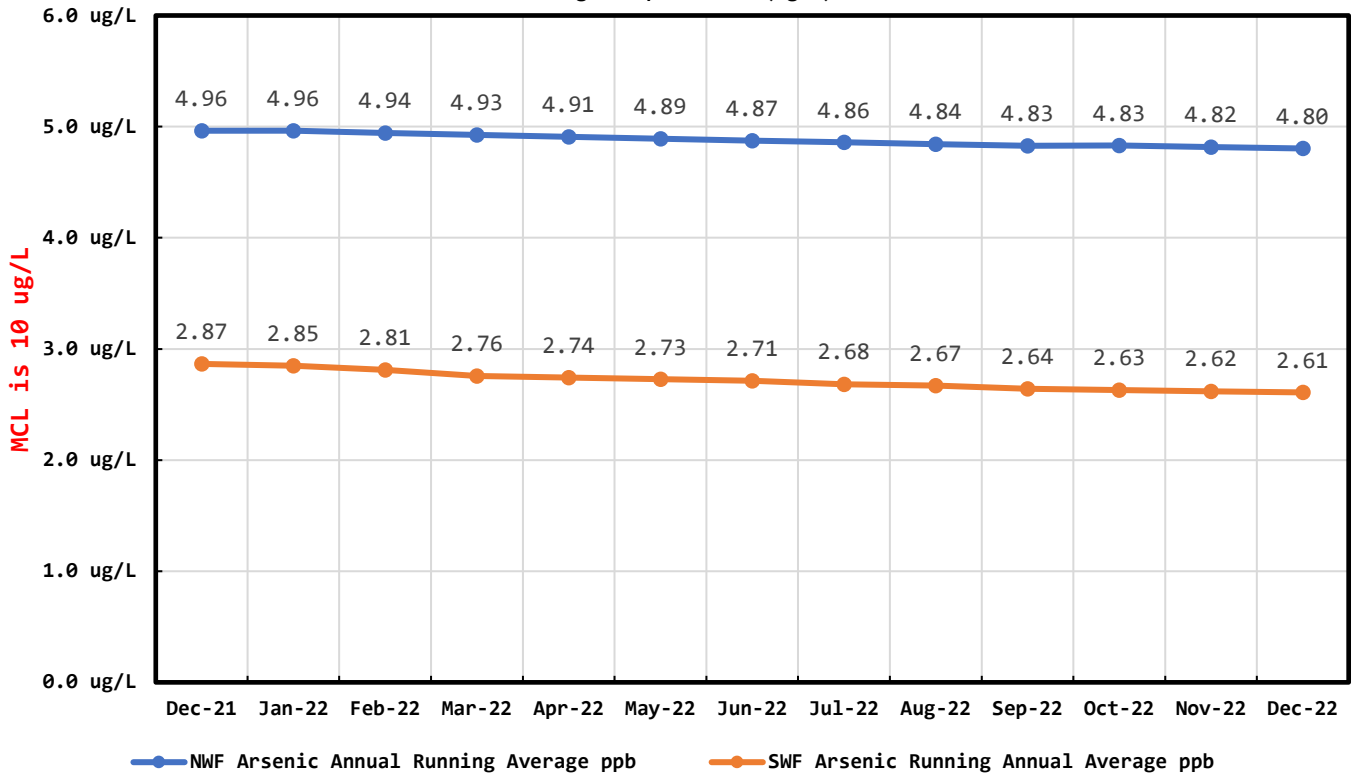
Operations Data

Past Due Accounts	228	<i>ea</i>
Properties with Liens	22	<i>ea</i>
Accounts Locked Off	1	<i>ea</i>
Water Main Locates	26	<i>ea</i>
Water Quality Complaints	0	<i>ea</i>
Customer Service Calls	50	<i>ea</i>
Customer Valves Installed	1	<i>ea</i>
New Services Installed	5	<i>ea</i>
NBWD Office & Grounds Water Use:	0.3254	<i>MG</i>

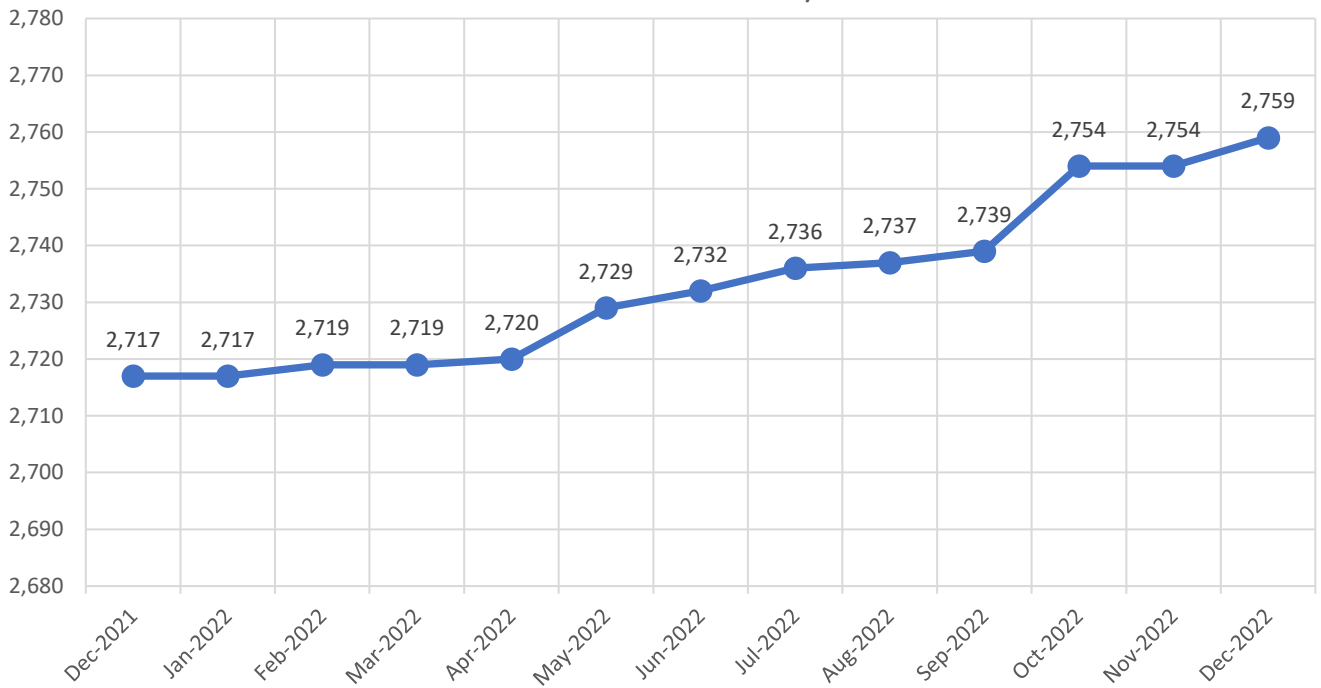
Data Period	December 1 - 31, 2022		Water Quality Data	
	Coliform Samples Collected	7	<i>ea</i>	
	Coliform Samples Absent	7	<i>ea</i>	
	Coliform Samples Postive	0	<i>ea</i>	
	Coliform Sample Positive E.coli	0	<i>ea</i>	
	NWF Arsenic	4.00	<i>ug/L</i>	
	SWF Arsenic	2.00	<i>ug/L</i>	
	NWF Arsenic Annual Running Average	4.80	<i>ug/L</i>	
	SWF Arsenic Running Annual Average	2.61	<i>ug/L</i>	



Arsenic Monthly Annual Average micrograms per liter (ug/L)



Residential Connections: 3/4" & 1"



General managers' report January 2023

- Communications between the North and South Treatment Facilities is up and running. Alarm system is now a text message to all on call personnel and manager. You can clearly see what is in the alarm and the only way to clear it is by coming in to do so. It took what seemed like forever to get all the components necessary to get this up and running.
- Maintenance 2023:
Prestige was here to do a major overhaul on the Pressure Regulating Valves (PRV) on each booster station site. We are still been getting high pressure spikes over 80 psi at each location. I have also gone to a yearly maintenance schedule with them rather than every 4 years.

Flow meter Calibration & Verification.

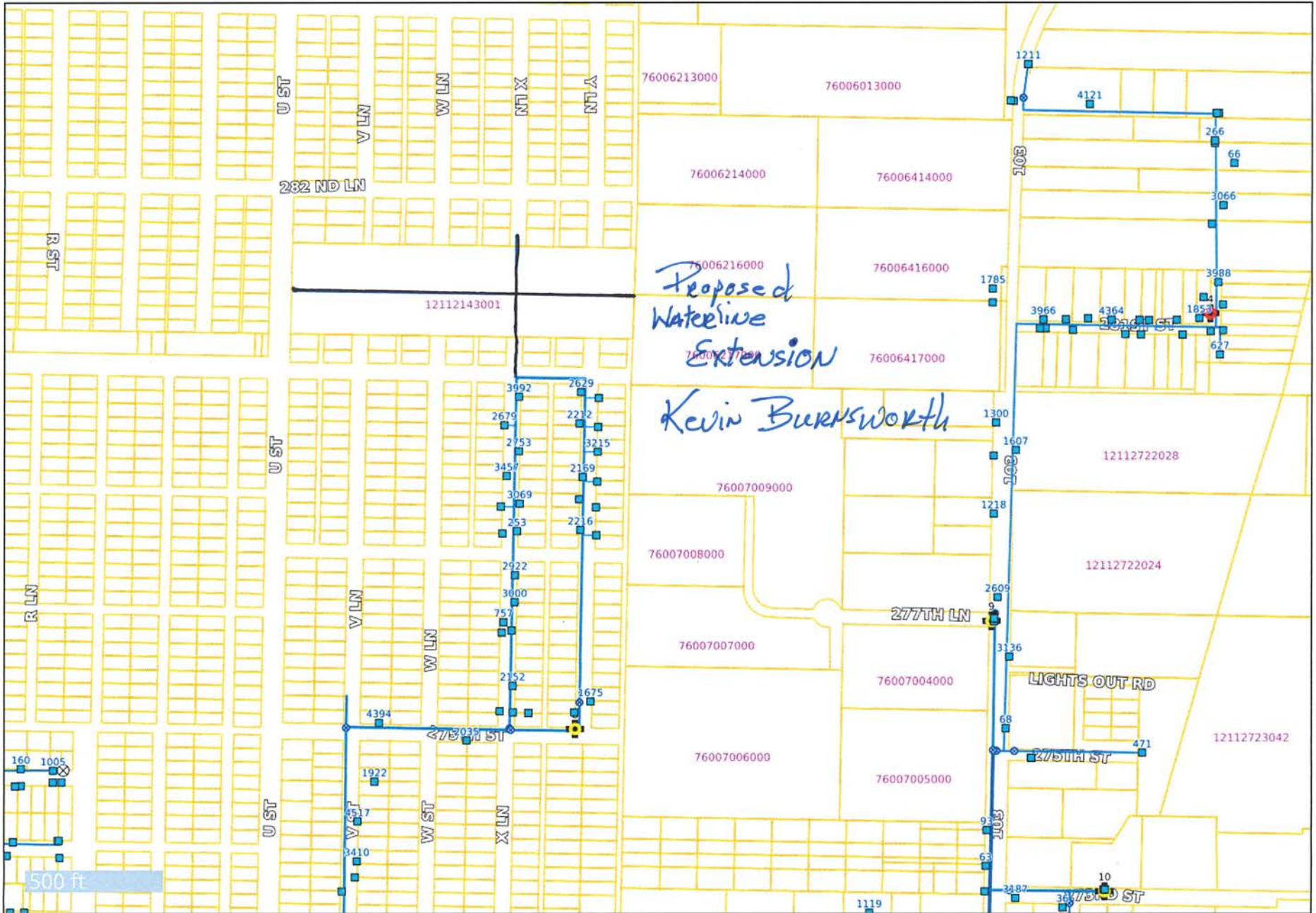
Generators North & South

Booster pumps

South booster pumps have been taken apart and measured to see if wear ring is still within tolerance.

The two smaller pumps are making bearing noise. They run 24 hours a day. It is not surprising that there chattering like they are. I will be purchasing another pump and motor. We will bolt that one up when it gets here. Sending in one at a time to have the bearings and seals changed. Then we will have a backup at least.

- Water plant maintenance:
We have noticed a heavy buildup of iron bacteria on the walls of the pipe on well 1 and 6. Well 8 has iron and manganese slime. We have installed launch sites and exit points to run pigs in them to clean them up. Talked with the engineers about what to use to clean them up. They recommend bore saver which is ascorbic acid (Vitamin C) to clean it up. We will do this one at a time to keep the well field running.
- Kevin Burnsworth wants to do a water line extension on X Lane running north and west.



Disclaimer: the information contained in this GIS application is NOT AUTHORITATIVE and has NO WARRANTY OR GUARANTEE assuring the information presented to you is correct. GIS applications are intended for a visual display of data and do not carry legal authority to determine a boundary or the location of fixed works, including parcels of land. They are intended as a location reference for planning, infrastructure management and general information only. The North Beach Water assumes no liability for any decisions made or actions taken or not taken by the user of the GIS application. The North Beach Water provides this GIS map on an "as is" basis without warranty of any kind, expressed or implied, including but not limited to warranties of merchantability or fitness for a particular purpose, and assumes no liability for any errors, omissions, or inaccuracies in the information provided.

December Work Orders

Read/Leave On	7
Turn Off/Lock – Customer Request	13
Turn Off/Lock – Non-Payment	1
Interrogate Meter	6
Locates	26
Unlock/Turn On	3
Test Backflow	2
Miscellaneous	4
Replace Meter Box	0
Low Pressure	1
Check Customer Valves	0
Dirty Water Complaints	0
Replace Meter	6
Install New Service	5
Assist Customer	4
Check For Leak	3
Re-Read Meter	0
Install Customer Control Valve	2
Total	83