

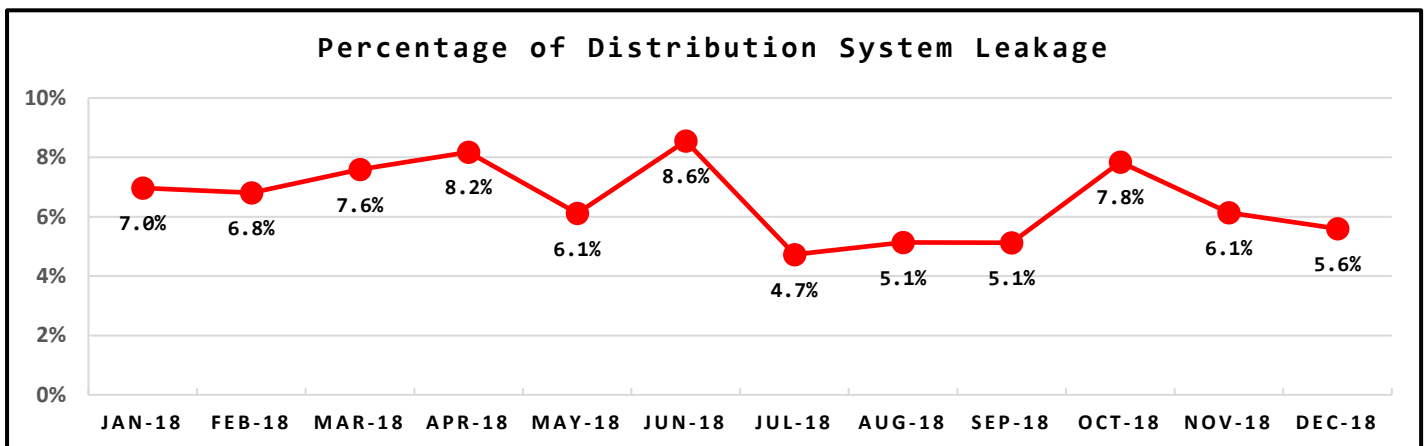
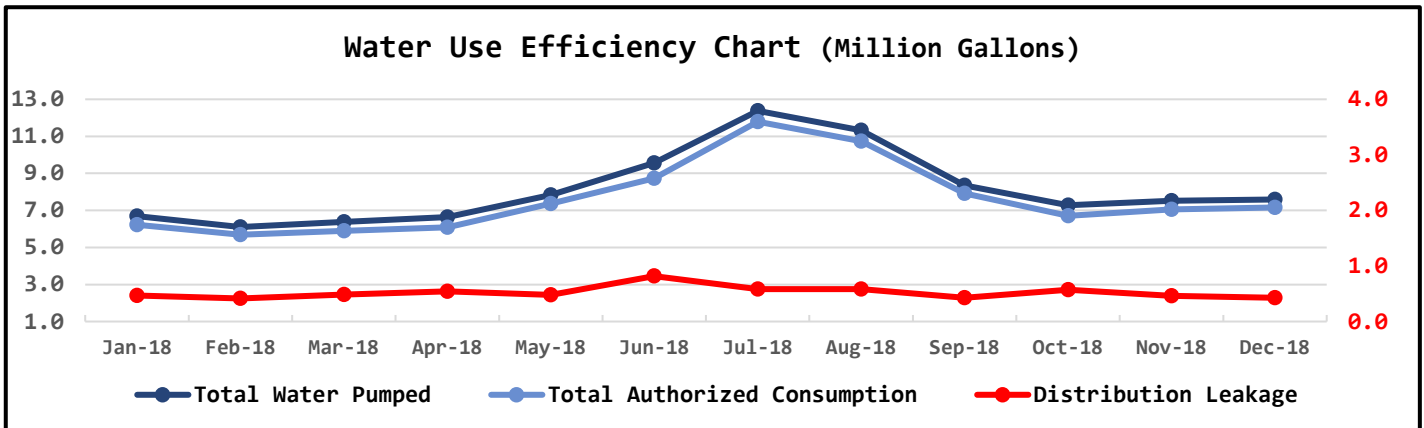
NORTH BEACH WATER DISTRICT

GENERAL MANAGERS REPORT

FOR
February-2019

Metering Period		Water Production		
December 1, 2018	to	December 31, 2018	NWF Master Meter	5.7587 mg
			SWF Master Meter	1.8309 mg
			Total Water Pumped	7.5896 mg

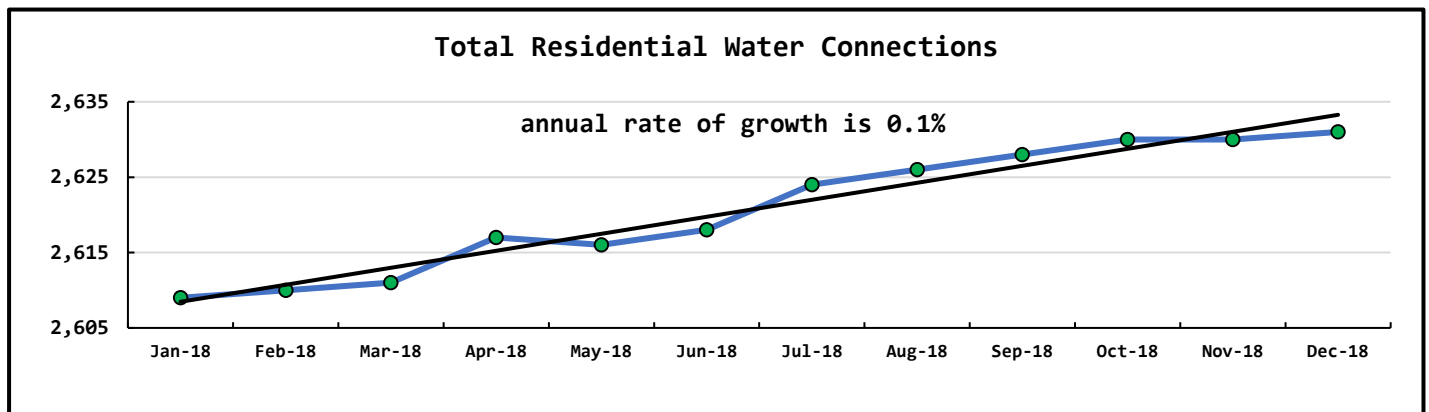
Metering Period		Water Consumption		
December 1, 2018	to	December 31, 2018	Total Water Sold	6.8928 mg
			NWF Backwash	0.1326 mg
			SWF Backwash	0.1390 mg
			Distribution Flushing	0.0000 mg
			Total Authorized Consumption	7.1644 mg
			Distribution Leakage	0.4252 mg
			Percent of DSL	5.6% %

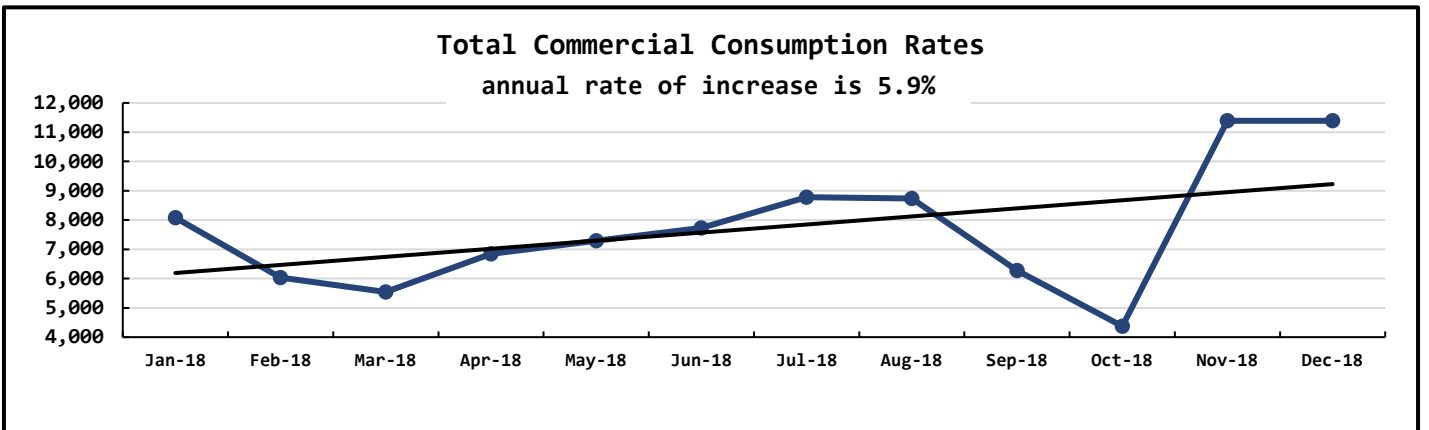
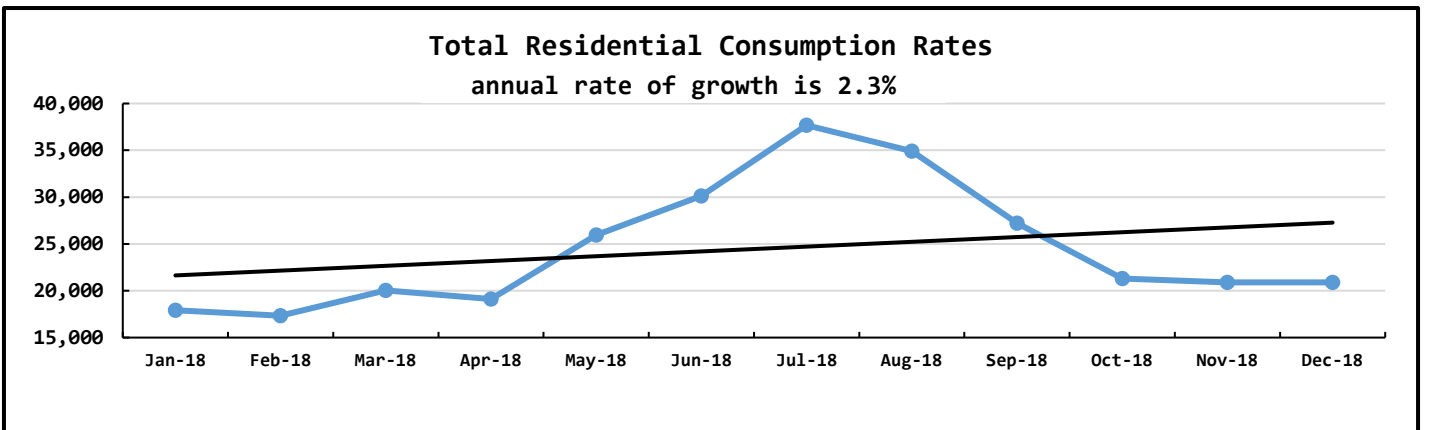
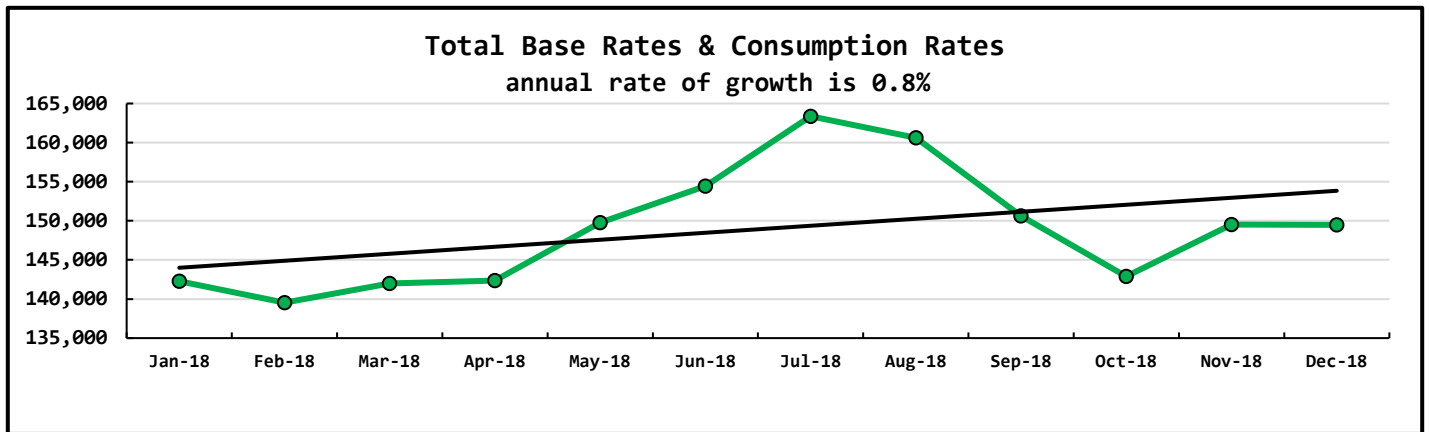


Data Period		Booster System Data		
December, 2018		North Wellfield Booster High	715	gpm
		North Wellfield Booster Low	0	gpm
		North Wellfield Booster Average	120	gpm
		South Wellfield Booster High	650	gpm
		South Wellfield Booster Low	24	gpm
		South Wellfield Booster Average	115	gpm
		North Wellfield Booster High	68	psi
		North Wellfield Booster Low	55	psi
		North Wellfield Booster Average	63	psi
		South Wellfield Booster High	65	psi
		South Wellfield Booster Low	52	psi
		South Wellfield Booster Average	62	psi

Data Period		Well Field Data		
December, 2018		North Wellfield Total	5.7587	mg
		South Wellfield Total	0.8309	mg

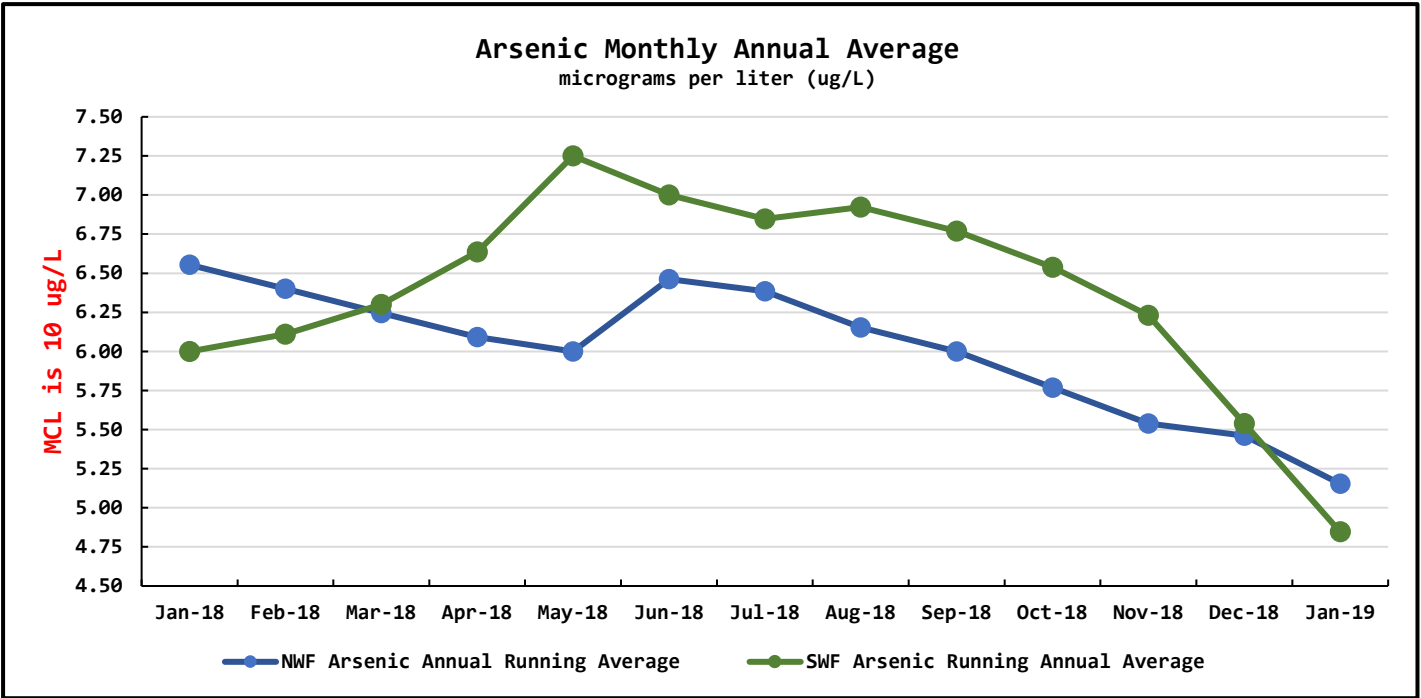
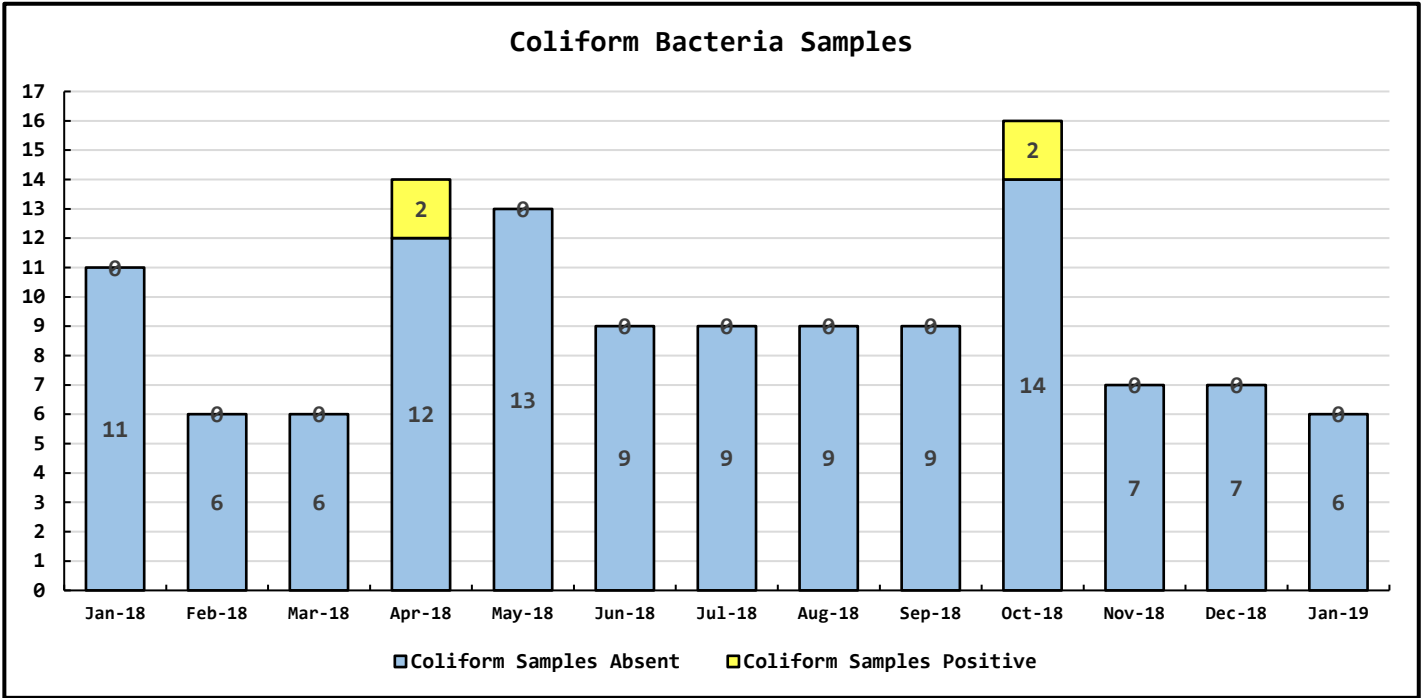
Data Period			Accounts Data		
December, 2018			Residential Base Rate	108,194	\$
Residential Accounts	2,631	ea	Residential Consumption	20,890	\$
			Commercial Base Rate	7,972	\$
Commercial Accounts	102	ea	Commercial Consumption	11,389	\$
Fire Flow Accounts	4	ea	Fire Flow Rate	907	\$
Backflow Accounts	21	ea	Backflow Assembly Rates	136	\$
			Sub Total	149,487	\$
			Surfside Contract	5,450	\$
			Surfside Reimbursement	163	\$
			Total	155,101	\$





Data Period	Operations Data		
January, 2019	Past Due Accounts	305	ea
	Properties with Liens	35	ea
	Accounts Locked Off	7	ea
	Water Main Locates	25	ea
	Water Quality Complaints	4	ea
	Customer Service Calls	49	ea
	Customer Valves Installed	0	ea
	New Services Installed	1	ea

Data Period	Water Quality Data		
January, 2019	Coliform Samples Collected	6	ea
	Coliform Samples Absent	6	ea
	Coliform Samples Positive	0	ea
	Coliform Sample Positive E. coli	0	ea
	NWF Arsenic Annual Running Average	5.15	ug/L
	SWF Arsenic Running Annual Average	4.85	ug/L



General Manager's Report - February 2019

DWSRF Loan Project Update

Gray & Osborne has presented a solution to the valve actuator condition at the South Wellfield Treatment Plant. An electronic actuator will be installed the supply water inlet valve that will slowly (120 seconds) open and close. The new actuator valve will eliminate any water hammer condition during the backwash of the SWF Filtration Vessels. NBWD will pay only the cost of the valve. The installation and programing will be paid by Gray & Osborne. They provided all the engineering and programing specifications at no cost.

The low radio signal between the NWF, SWF, and WWF has been resolved. The vender installed a parabolic dish style antenna at the NWF. The new antenna significantly increased the signal strength. The District will not be charged for the upgraded antenna.

2018 Capital Improvement Projects

South Wellfield Improvements - Postponed to later date

North Wellfield Improvements - Postponed to later date

Emond Easement Improvements - Work is complete

Materials to install the Z Street loop across the Emond property have been ordered. The crew will start the work in early March.

Parabolic Dish Antenna (new)



Omni Antenna (old)

