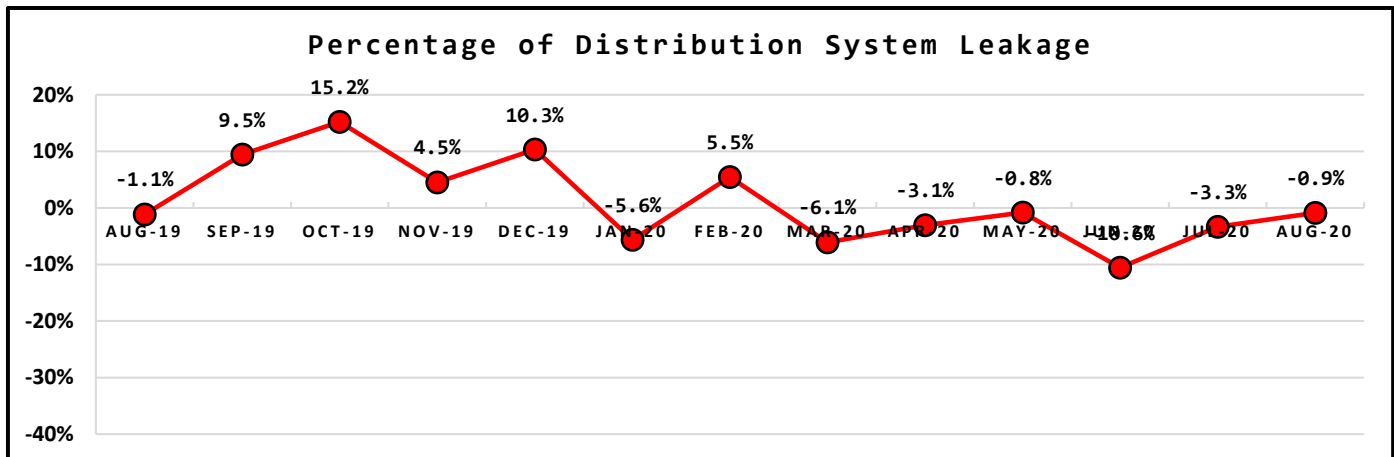
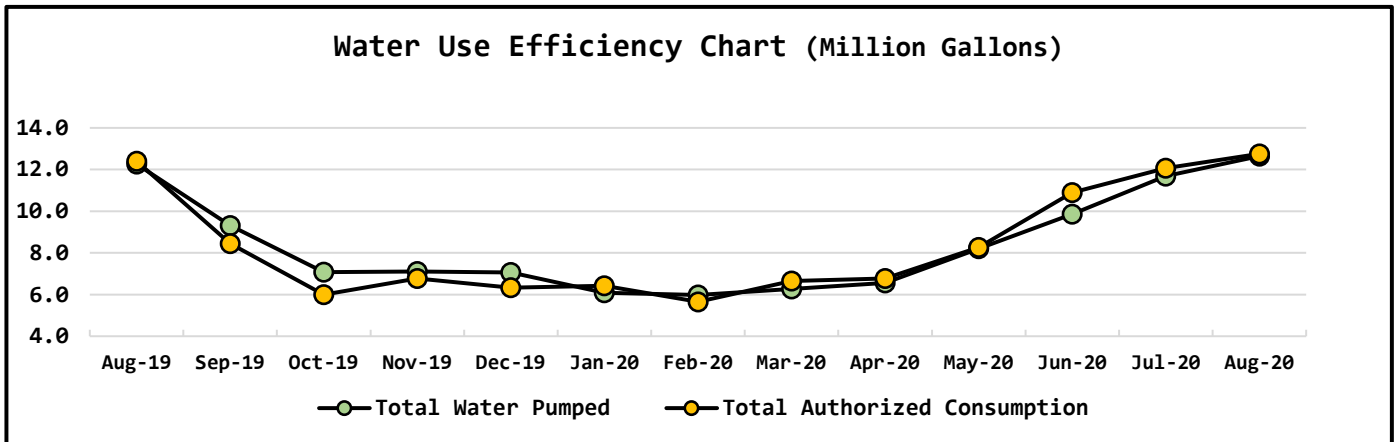


## NORTH BEACH WATER DISTRICT GENERAL MANAGERS REPORT

FOR  
October-2020

Metering Period	Water Production		
<u>September 1, 2020</u> to <u>September 30,2020</u>	NWF Master Meter	<u>5.0839</u>	<i>mg</i>
	SWF Master Meter	<u>5.3595</u>	<i>mg</i>
	Total Water Pumped	<u>10.4434</u>	<i>mg</i>

Metering Period	Water Consumption		
<u>September 1, 2020</u> to <u>September 30,2020</u>	Total Water Sold	<u>10.9725</u>	<i>mg</i>
	NWF Backwash	<u>0.1897</u>	<i>mg</i>
	SWF Backwash	<u>1.0615</u>	<i>mg</i>
	Distribution Flushing	<u>0.3720</u>	<i>mg</i>
	Total Authorized Consumption	<u>12.7555</u>	<i>mg</i>
	Distribution Leakage	<u>-0.1114</u>	<i>mg</i>
	Percent of DSL	<u>-0.9%</u>	<i>%</i>

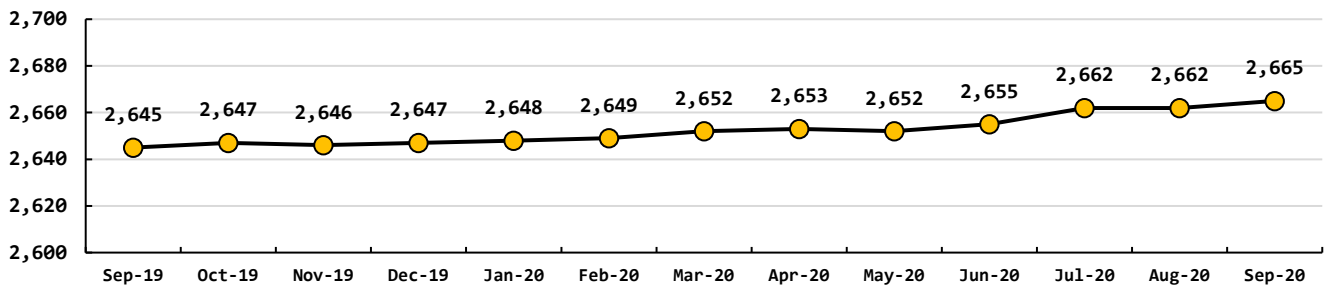


Data Period		Booster System Data		
September, 2020		North Wellfield Booster High gpm	1183	<i>gpm</i>
		North Wellfield Booster Low gpm	0	<i>gpm</i>
		North Wellfield Booster Average gpm	117	<i>gpm</i>
		South Wellfield Booster High gpm	1547	<i>gpm</i>
		South Wellfield Booster Low gpm	0	<i>gpm</i>
		South Wellfield Booster Average gpm	130	<i>gpm</i>
		North Wellfield Booster High psi	81	<i>psi</i>
		North Wellfield Booster Low psi	20	<i>psi</i>
		North Wellfield Booster Average psi	60	<i>psi</i>
		South Wellfield Booster High psi	76	<i>psi</i>
		South Wellfield Booster Low psi	11	<i>psi</i>
		South Wellfield Booster Average psi	61	<i>psi</i>

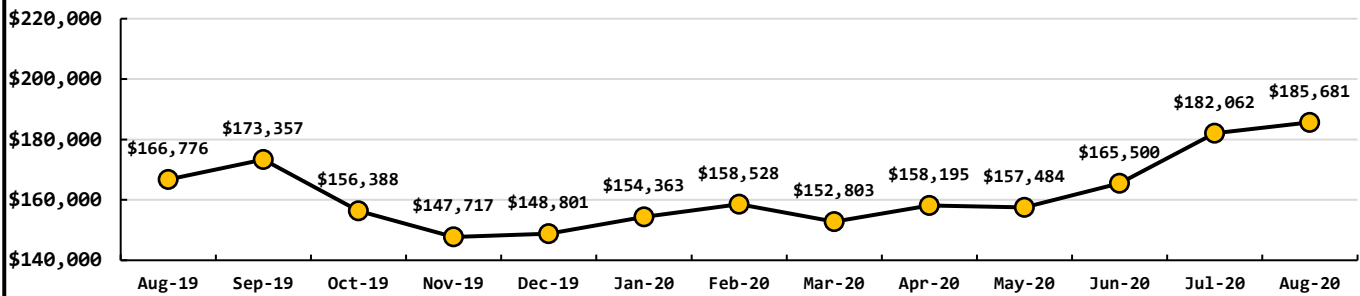
Data Period		Well Field Data		
September, 2020		North Wellfield Total MG	5.0839	<i>mg</i>
		South Wellfield Total MG	5.3595	<i>mg</i>

Data Period			Accounts Data		
September, 2020			Residential Base Rate	119,916	<i>\$</i>
			Residential Consumption	44,836	<i>\$</i>
			Commercial Base Rate	8,670	<i>\$</i>
Residential Accounts	<u>2,665</u>	<i>ea</i>	Commercial Consumption	12,259	<i>\$</i>
Commercial Accounts	<u>100</u>	<i>ea</i>	Fire Flow Rate	1,108	<i>\$</i>
Fire Flow Accounts	<u>4</u>	<i>ea</i>	Backflow Assembly Rates	287	<i>\$</i>
Backflow Accounts	<u>31</u>	<i>ea</i>	Ilwaco	3,962	<i>\$</i>
			Ilwaco Reimbursement	0	<i>\$</i>
			Other Fees & Charges	299	<i>\$</i>
			Total	191,336	<i>\$</i>

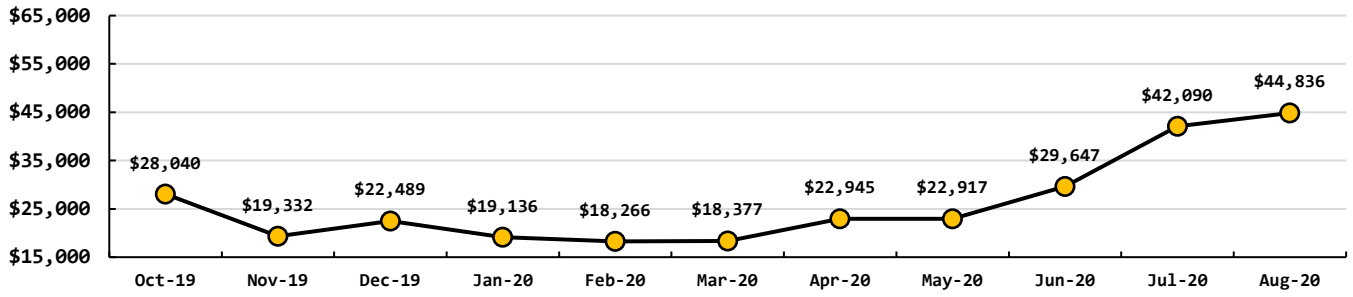
### Total Residential Water Connections



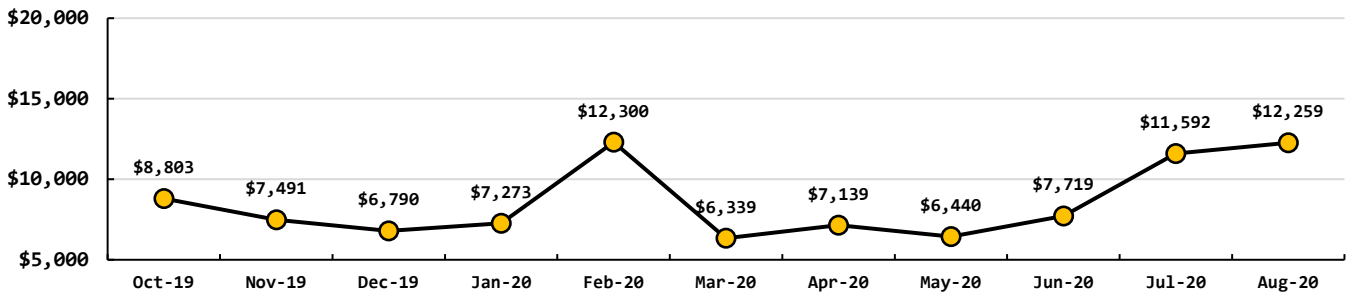
### Total Base Rates & Consumption Rates



**Total Residential Consumption Rates**



**Total Commercial Consumption Rates**



**Data Period**

**Operations Data**

September, 2020

Past Due Accounts	305	ea
Properties with Liens	24	ea
Accounts Locked Off	0	ea
Water Main Locates	31	ea
Water Quality Complaints	1	ea
Customer Service Calls	127	ea
Customer Valves Installed	0	ea
New Services Installed	1	ea

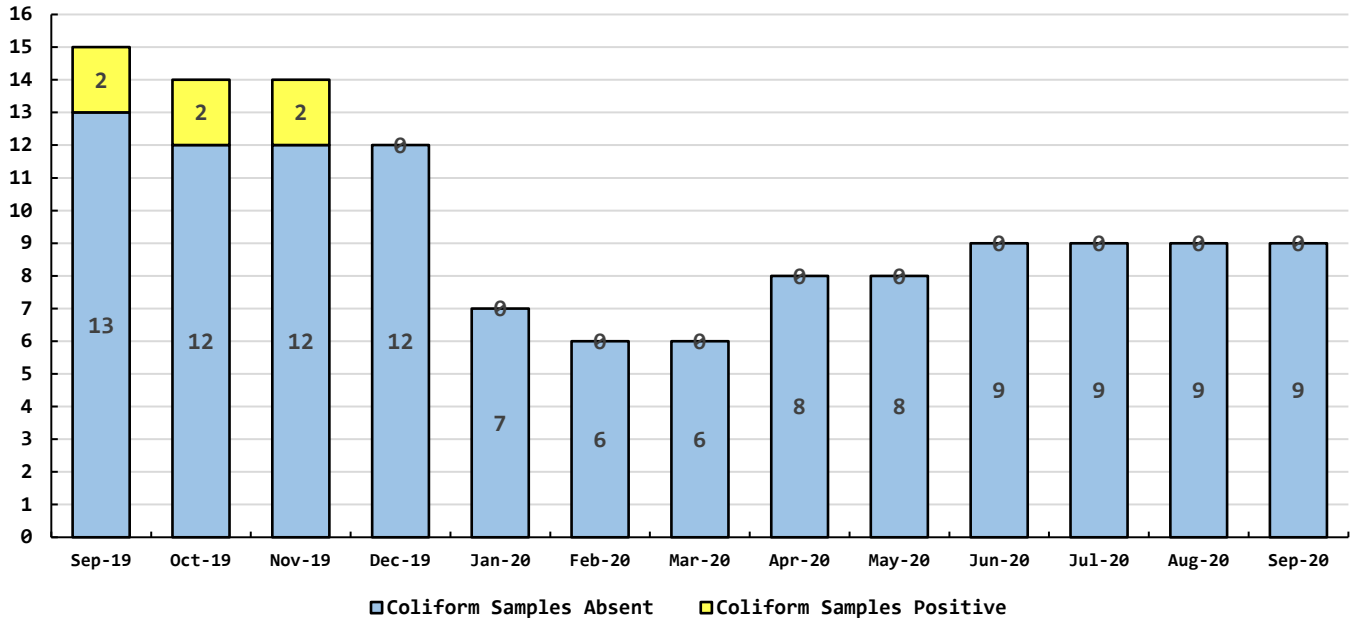
**Data Period**

**Water Quality Data**

September, 2020

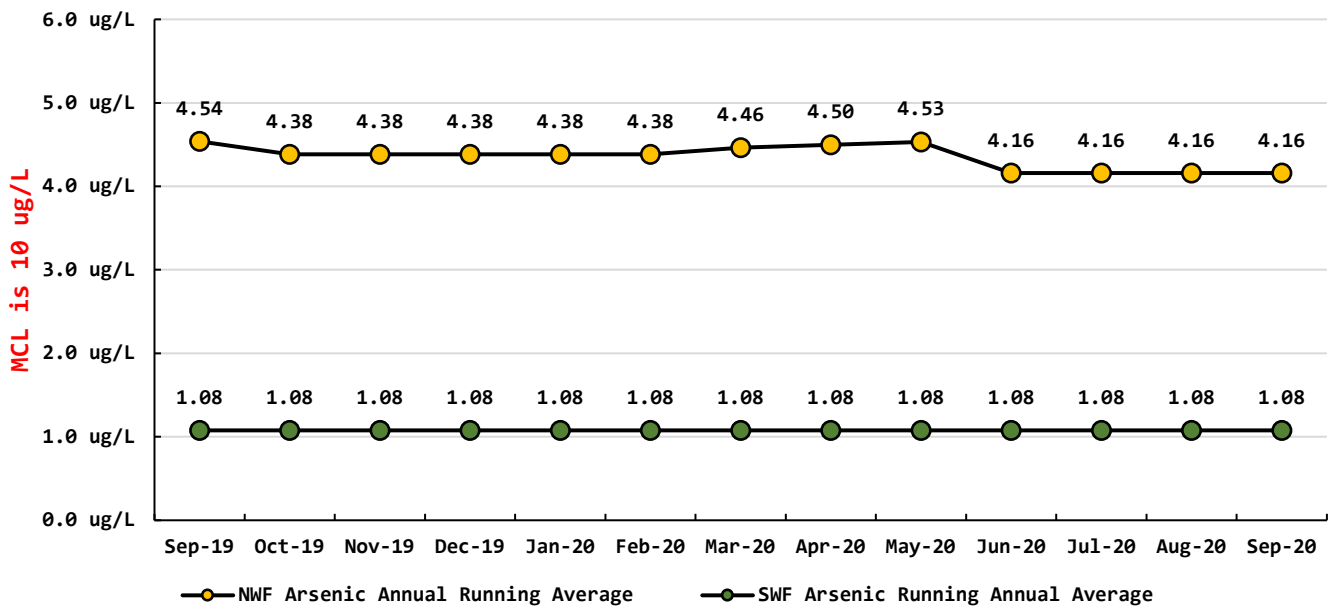
Coliform Samples Collected	9	ea
Coliform Samples Absent	9	ea
Coliform Samples Positive	0	ea
Coliform Sample Positive E. coli	0	ea
NWF Arsenic Annual Running Average	4.16	ug/L
SWF Arsenic Running Annual Average	1.08	ug/L

### Coliform Bacteria Samples



### Arsenic Monthly Annual Average

micrograms per liter (ug/L)



# September 2020 Managers Report:

## Waterline Construction:

U Street, 8" line extension has been completed and is in the disinfection phase. We will pressure test & Bac-T on October 19<sup>th</sup>.

Hydrant installed on Park Ave at 255<sup>th</sup> Street.

## Distribution:

Flushing to begin on Monday October 19<sup>th</sup> and last through October 30<sup>th</sup>.

## Waterline Breaks:

Main Breaks: 255<sup>th</sup>, 274<sup>th</sup>, 273<sup>rd</sup> & Park Ave. All have been repaired and are operating as planned.

## Waterlines:

Would like to discuss the future extensions of lines on 194<sup>th</sup> in Tides West, North on U Street, V Lane, & X Lane.

## GIS Data:

This is an on-going project and Joshua has been doing a great job on this.

## Training: Shared with Surfside

Line crew (Joshua Maxey, Jon Fleming, Austin Benson, & Jake Nesbitt) have completed competent persons class in trench safety. Since any of them will be the first to respond, and most likely be consulted by Labor and Industries at the job site, this class teaches soil identification, identifying hazards and use of shoring.

Climbing safety at the Surfside well field. The class taught proper use of safety equipment, use of harness and 3 points of contact.

## Treatment Process:

### NWF:

The use of Potassium Permanganate (KMNO<sub>4</sub>) is an important chemical for our filtration media at the NWF. The District has been using saturators for a long time. The requirement for KMNO<sub>4</sub> from the filter media supplier is a dose of 2.5 mg/l on a continuous feed. I will explain more about this at the meeting.

### SWF:

We borrowed a jar testing device from Ilwaco to help test the Ferric dosage at the SWF. I will explain this in more detail as well.

## September Work Orders

Read/Leave On	12
Turn Off/Lock – Customer Request	9
Turn Off/Lock – Non-Payment	0
Interrogate Meter	10
Locates	31
Unlock/Turn On	8
Test Backflow	2
Miscellaneous	3
Replace Meter Box	2
Low Pressure	2
Check Customer Valves	0
Dirty Water Complaints	1
Replace Meter	4
Install New Service	1
Assist Customer	0
Check For Leak	12
Re-Read Meter	30
Install Customer Control Valve	0
<b>Total</b>	<b>127</b>