

NORTH BEACH WATER DISTRICT

GENERAL MANAGERS REPORT

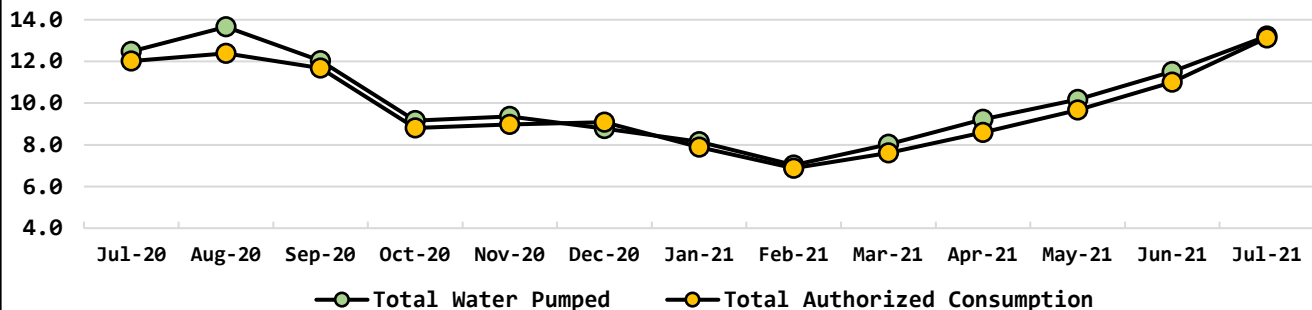
FOR

September-2021

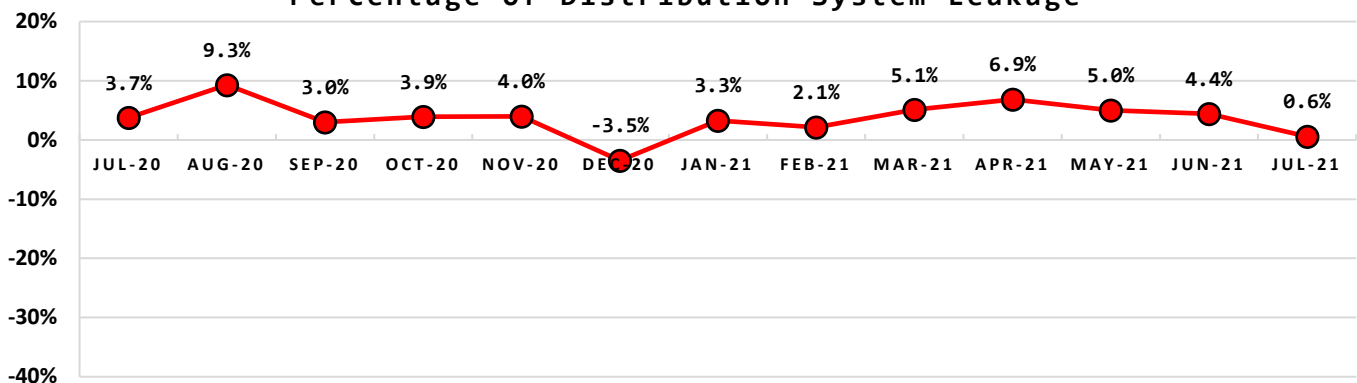
Metering Period		Water Production		
August 1, 2021	to	August 31, 2021	NWF Master Meter	4.6231 mg
			SWF Master Meter	7.7761 mg
			Total Water Pumped	12.3992 mg

Metering Period		Water Consumption		
July 1, 2021	to	July 31, 2021	Total Water Sold	11.0318 mg
			NWF Backwash	0.2163 mg
			SWF Backwash	1.6177 mg
			Distribution Flushing, Fire Dept & Water use at NWF & SWF	0.2651 mg
			Total Authorized Consumption	13.1309 mg
			Distribution Leakage	0.0782 mg
			Percent of DSL	0.6% %

Water Use Efficiency Chart (Million Gallons)



Percentage of Distribution System Leakage

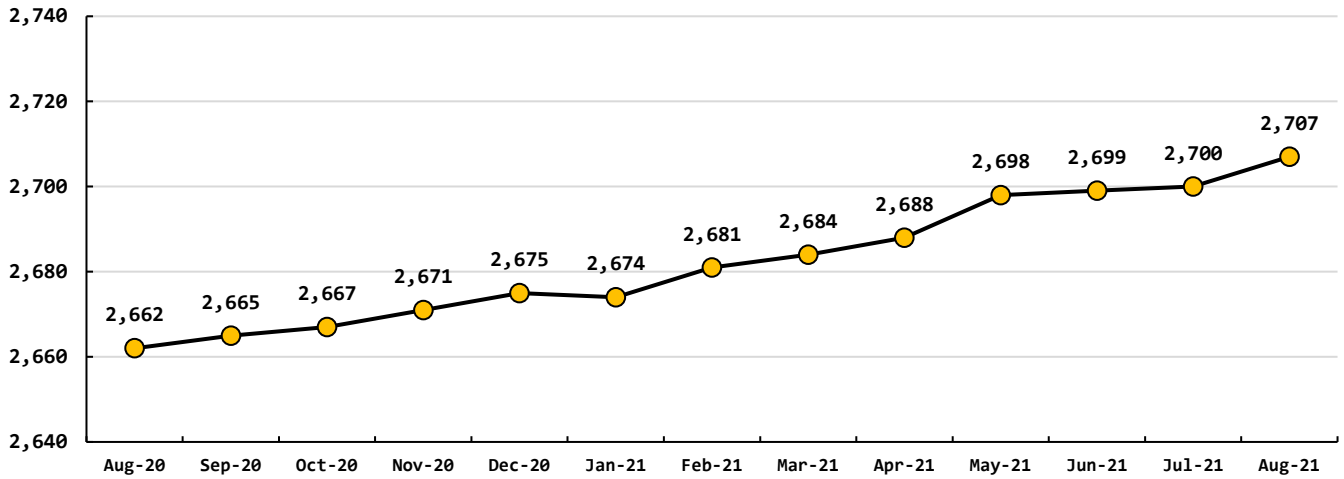


Data Period		Booster System Data		
August, 2021		North Wellfield Booster High gpm	1341	<i>gpm</i>
		North Wellfield Booster Low gpm	0	<i>gpm</i>
		North Wellfield Booster Average gpm	92	<i>gpm</i>
		Total MG pumped to Distribution at NWF	4.5809	<i>MG/M</i>
		South Wellfield Booster High gpm	1226	<i>gpm</i>
		South Wellfield Booster Low gpm	0	<i>gpm</i>
		South Wellfield Booster Average gpm	170	<i>gpm</i>
		Total MG pumped to Distribution at SWF	7.9453	<i>MG/M</i>
		Total Pumped to Distribution	12.5262	<i>MG/M</i>
		North Wellfield High	66	<i>psi</i>
		North Wellfield Low	9	<i>psi</i>
		North Wellfield Average	60	<i>psi</i>
		South Wellfield Booster High	69	<i>psi</i>
		South Wellfield Booster Low	9	<i>psi</i>
		South Wellfield Booster Average	61	<i>psi</i>
		245th Distribution Pressure Readings per Month	3,546	
		Highest	68	<i>psi</i>
		Lowest	10	<i>psi</i>
		Average	60	<i>psi</i>

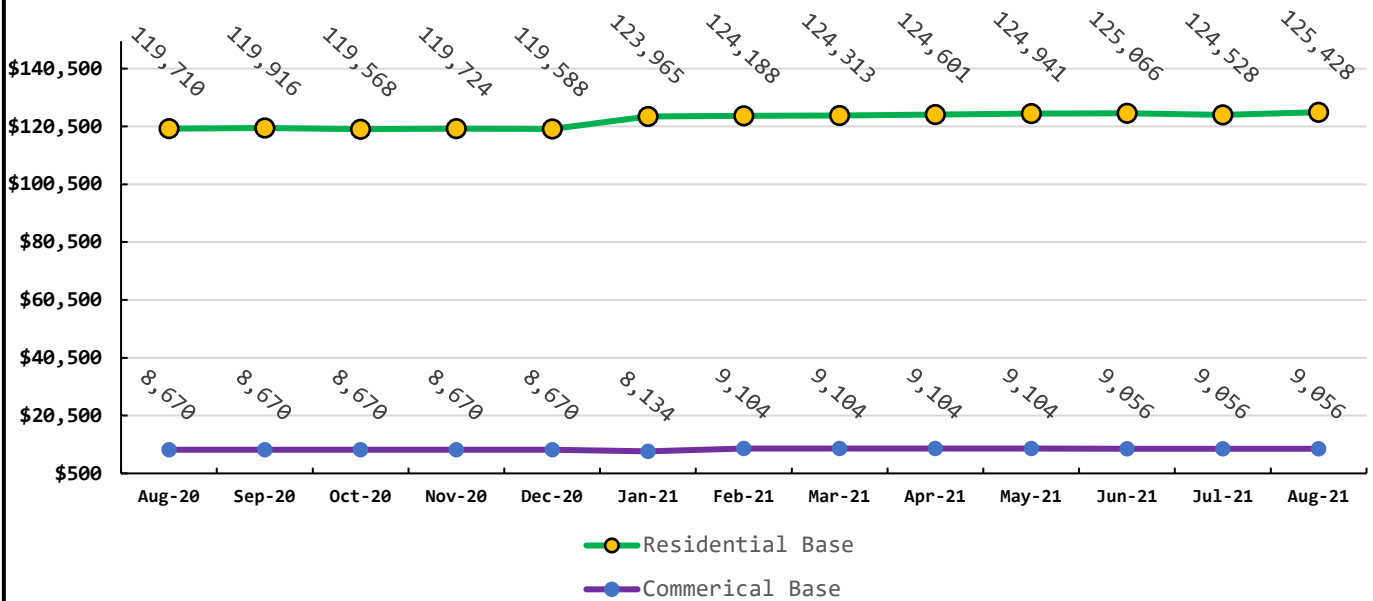
Data Period		Well Field Data		
August, 2021		North Wellfield Total	4.6231	
		South Wellfield Total	7.7761	<i>mg</i>
		Total Production	12.3992	<i>mg</i>

Data Period			Accounts Data		
August,2021			Residential Base Rate	125,428	\$
July,2021			Residential Consumption	48,518	\$
August, 2021			Commercial Base Rate	9,056	\$
July,2021			Commercial Consumption	11,423	\$
Residential Accounts	2,707	ea	Fire Flow Rate	1,163	\$
Commercial Accounts	99	ea	Backflow Assembly Rate	301	\$
Fire Flow Accounts	4	ea	Ilwaco Contract	0	\$
Backflow Accounts	38	ea	Ilwaco Reimbursement	0	\$
			Other Fees & Charges	0	\$
			Total	195,225	\$

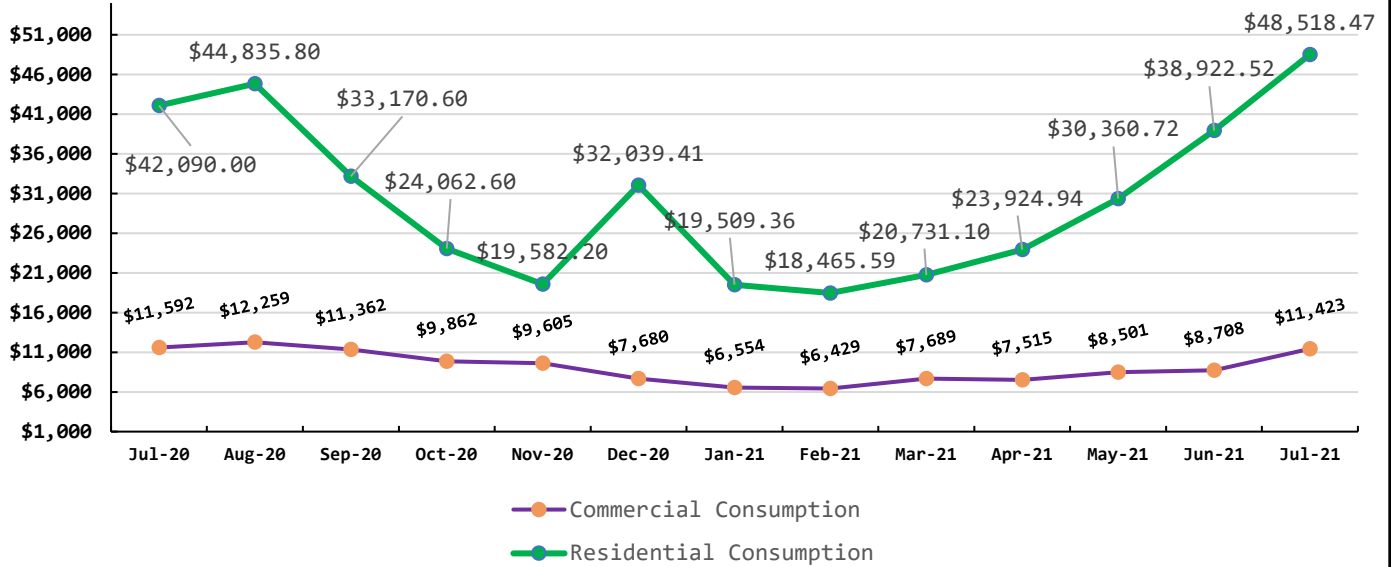
Total Residential Water Connections



Total Base Rates Residential & Commercial Rates



Total Commercial & Residential Consumption Rates



Data Period

August, 2021

Operations Data

Past Due Accounts	289	ea
Properties with Liens	18	ea
Accounts Locked Off	0	ea
Water Main Locates	38	ea
Water Quality Complaints	0	ea
Customer Service Calls	48	ea
Customer Valves Installed	2	ea
New Services Installed	5	ea

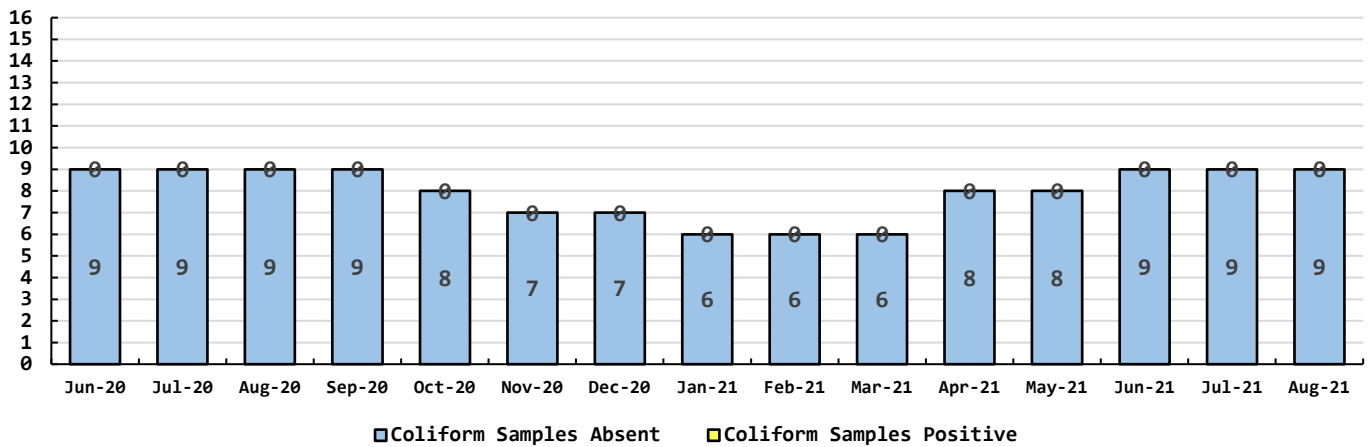
Data Period

August, 2021

Water Quality Data

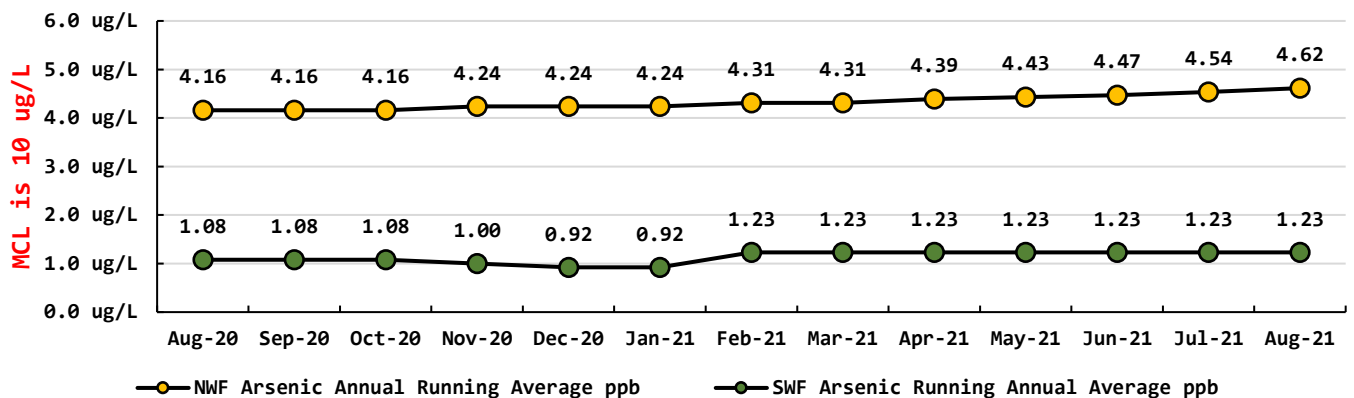
Coliform Samples Collected	9	ea
Coliform Samples Absent	9	ea
Coliform Samples Postive	0	ea
Coliform Sample Positive E.coli	0	ea
NWF Arsenic	6	ug/L
SWF Arsenic	1	ug/L
NWF Arsenic Annual Running Average	4.54	ug/L
SWF Arsenic Running Annual Average	1.23	ug/L

Coliform Bacteria Samples



Arsenic Monthly Annual Average

micrograms per liter (ug/L)



General Managers Report for September 2021:

- **Pilot test** is running.
Started using Ferric Chloride & Potassium Permanganate and the results of Arsenic on the current testing are at 1 ppb and lower. I'm satisfied with the results so far and will be discussing this with G&O. The media that is doing the job so far is MTM. Katalox hasn't really done the task like I expected it.
- **5 new meter installations.**
- **Bladder** that is to be used for hauling water has come in. We can lay it out on the trailer and fill and haul water.
- **Road cuts** on Vernon Ave & Park Ave have been paved by Bayview.
- **Questionnaires for landowners** along P Street from 245th south to 240th have been sent with self-stamped & addressed envelopes. We'll show you at the meeting. All landowners have been sent a questionnaire. Yes, we will leave a valve cluster for 243rd LN.
- **Discussion** about Vernon Avenue Water Line Project.
- 2- small **mainline** leaks were repaired. 1- **hydrant**, that was leaking at the flange were repaired. Along with the work orders that have been completed.
- **GIS work continues.** We have updated the system to show length of mainlines within the system. It never had this detail. You had to measure which took forever to do. Exposed 2 mainline valves that were buried along Ridge Ave. (Aluminum Cans are hard to find with a metal detector).
- **Crew** is preparing for 255th pipe removal project.
- **Hydrant flushing** to start on October 11th.
- **See attachment** for Inorganic Chemical Testing ,(IOC testing) of the NWF.
- **South Well Field** Communications bids are in. Covid has made obtaining materials quite difficult. Graybar & Anixter are the only ones that have returned bid requests.
- **G&O**—Joe Plahuta has taken a new position with Thurston County and Mike Johnson has taken his place. I'm currently working on a list of items to send to Mike that concern me here. I have worked with Mike before and like what he brings to the table.
- **You'll notice Managers Report** that we had a low pressure of 9 psi at the booster Stations and 10 psi in the distribution. This happened August 18th at 0024 hrs. Till 0026 hrs., 2 minutes. It was a power spike that stopped booster pump operations. Transfer switch activated then disconnected. This happened because voltage balanced out.



ALS Environmental
 1317 South 13th Avenue
 Kelso, WA 98626
INORGANIC CHEMICALS (IOCs) REPORT
for the State of Washington
REPORT OF ANALYSIS

Date Collected: (MM/DD/YY) 04/21/21		System Group (Select A,B,Other): A	
Water System ID Number: 63000C		System Name: North Beach Water	
Lab Sample Number: 01741981		County: Pacific Pacific	
Sample Location: Treatment Sampler		Source Number(s): S01/07	
Sample Purpose:		Date Received: 04/21/21	
Select One		Date Analyzed: 4/21-5/4/21	
<input checked="" type="checkbox"/> X	RC- Routine/Compliance	Date Reported: 05/05/21	
<input type="checkbox"/>	C- Confirmation	Comments: K2104198-001	
<input type="checkbox"/>	Investigative		
<input type="checkbox"/>	Other(specify)		
Sample Composition:		Sample Type: (Select One)	
Select One		<input type="checkbox"/> Pre-Treatment/Raw	
<input type="checkbox"/>	S- Single Source	<input checked="" type="checkbox"/> X Post-Treatment/Finished	
<input checked="" type="checkbox"/> X	B- Blended	<input type="checkbox"/> Unknown	
<input type="checkbox"/>	C- Composite	Sample Collected by: Dennis Schweizer	
<input type="checkbox"/>	D- Distribution sample	Phone Number: 360-665-4144	
Send Report to: Rick Gray WA DOH		Bill to:	

DOH #	ANALYTES	RESULTS	UNITS	SRL	TRIGGER	MCL	MCL Exceeded check if yes	Method	Analyst
EPA REGULATED									
4	Arsenic	0.004	mg/l	0.0014	0.005	0.01		200.8	EM
5	Barium	<0.005	mg/l	0.1	2	2		200.7	RRM
6	Cadmium	<0.001	mg/l	0.001	0.005	0.005		200.8	EM
7	Chromium	<0.001	mg/l	0.007	0.1	0.1		200.8	EM
11	Mercury	<0.0002	mg/l	0.0002	0.002	0.002		245.1	JH
12	Selenium	<0.001	mg/l	0.002	0.05	0.05		200.8	EM
110	Beryllium	<0.0003	mg/l	0.0003	0.004	0.004		200.8	EM
111	Nickel	<0.001	mg/l	0.005	---	---		200.8	EM
112	Antimony	<0.001	mg/l	0.003	0.006	0.006		200.8	EM
113	Thallium	<0.001	mg/l	0.001	0.002	0.002		200.8	EM
116	Cyanide	<0.020	mg/l	0.01	0.2	0.2		335.4	DAB
19	Fluoride	<0.20	mg/l	0.5	2	4		300.0	KB
114	Nitrite - N	<0.10	mg/l	0.1	0.5	1		300.0	KB
20	Nitrate - N	0.32	mg/l	0.5	5	10		300.0	KB
161	Total Nitrate/Nitrite	0.32	mg/l	0.5	5	10		300.0	KB
EPA REGULATED (Secondary)									
8	Iron	0.16	mg/l	0.1	---	0.3 ¹		200.7	RRM
10	Manganese	0.029	mg/l	0.01	---	0.05 ¹		200.7	RRM
13	Silver	<0.001	mg/l	0.1	---	0.1 ¹		200.8	EM
21	Chloride	24.5	mg/l	20	---	250 ¹		300.0	KB
22	Sulfate	6.88	mg/l	50	---	250 ¹		300.0	KB
24	Zinc	<0.01	mg/l	0.2	---	5 ¹		200.7	RRM

Cont. on next page

INORGANIC CHEMICALS (IOCs) REPORT for the State of Washington (cont.)

Lab Sample Number: 01741981

Date Collected: 04/21/21

STATE REGULATED									
DOH #	ANALYTES	RESULTS	UNITS	SRL	TRIGGER	MCL	MCL Exceeded check if yes	Method	Analyst
14	Sodium	17.8	mg/l	5	---	---		200.7	RRM
15	Hardness	69.0	mg/l	10	---	---		2340B	RRM
16	Conductivity	234	umhos/cm	70	---	700 ¹		2510B	
17	Turbidity	0.86	NTU	0.1	---	---		180.1	BN
18	Color	5.0	color units	15	---	15 ¹		2120B	AC
26	Total Dissolved Solids	135	mg/l	100	---	500 ¹		2540C	JM

STATE UNREGULATED									
9	Lead	0.006	mg/l	0.001	---	---		200.8	EM
23	Copper	<0.01	mg/l	0.02	---	---		200.7	RRM

NOTES:

SRL (State Reporting Level): indicates the minimum reporting level required by the Washington Department of Health (DOH).

Trigger Level: DOH Drinking Water Response Level. Systems with compounds detected at concentrations in excess of this level are required to take additional samples. Contact your regional DOH office for further information.

MCL (Maximum Contaminant Level): If the contaminant amount exceeds the MCL, immediately contact your regional DOH office.

NA (Not Analyzed): in the results column indicates this compound was not included in the current analysis.

ND (Not Detected): in the results column indicates this compound was analyzed and not detected at a level greater than or equal to the SRL.

<(0.00X): indicates the compound was not detected in the sample at or above the concentration indicated.

(lab mdl) lower than the SRL.

¹ : Secondary MCL (established for esthetic purposes, not health based.

Comments:

August Work Orders

Read/Leave On	5
Turn Off/Lock – Customer Request	8
Turn Off/Lock – Non-Payment	0
Interrogate Meter	5
Locates	38
Unlock/Turn On	5
Test Backflow	6
Miscellaneous	2
Replace Meter Box	0
Low Pressure	1
Check Customer Valves	0
Dirty Water Complaints	0
Replace Meter	0
Install New Service	5
Assist Customer	4
Check For Leak	11
Re-Read Meter	2
Install Customer Control Valve	2
Total	94