

NORTH BEACH WATER DISTRICT

GENERAL MANAGERS REPORT

For March Meeting - 2022

February Well Field Output

February 1, 2022	to	February 28, 2022	NWF Master Meter:	5.9365	mg
			SWF Master Meter:	1.7097	mg
			Total Pumped to Plant:	7.6462	MG

Water Plant Production

Data Period

Data:

January 1, 2022	to	January 31, 2022	NWF Master Meter:	7.0412	mg
			SWF Master Meter:	0.9363	mg
			Accounted for Water:	1.7775	
			Total Water Pumped:	7.9775	MG

Metering Period

January 1, 2022	to	January 31, 2022	Total Water Sold :	5.5343	MG
-----------------	----	------------------	--------------------	--------	----

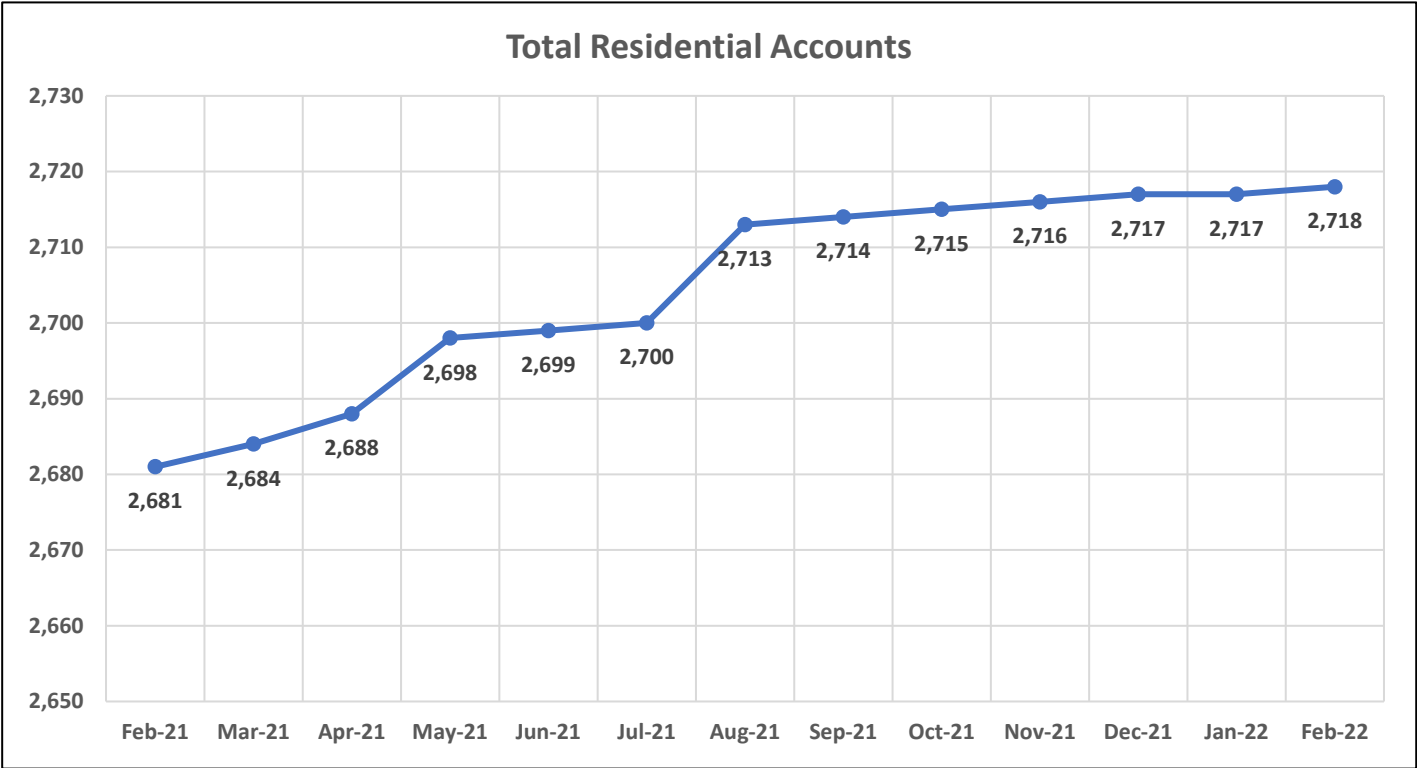
January Accounted for Water:

NWF Backwash :	0.3778	mg
SWF Backwash :	0.3619	mg
Distribution Flushing, Fire Dept, Pac Co & Waterline Leak Repair's:	0.9495	mg
NBWD use NWF & SWF:	0.0883	mg
Total Accounted for Water:	1.7775	MG

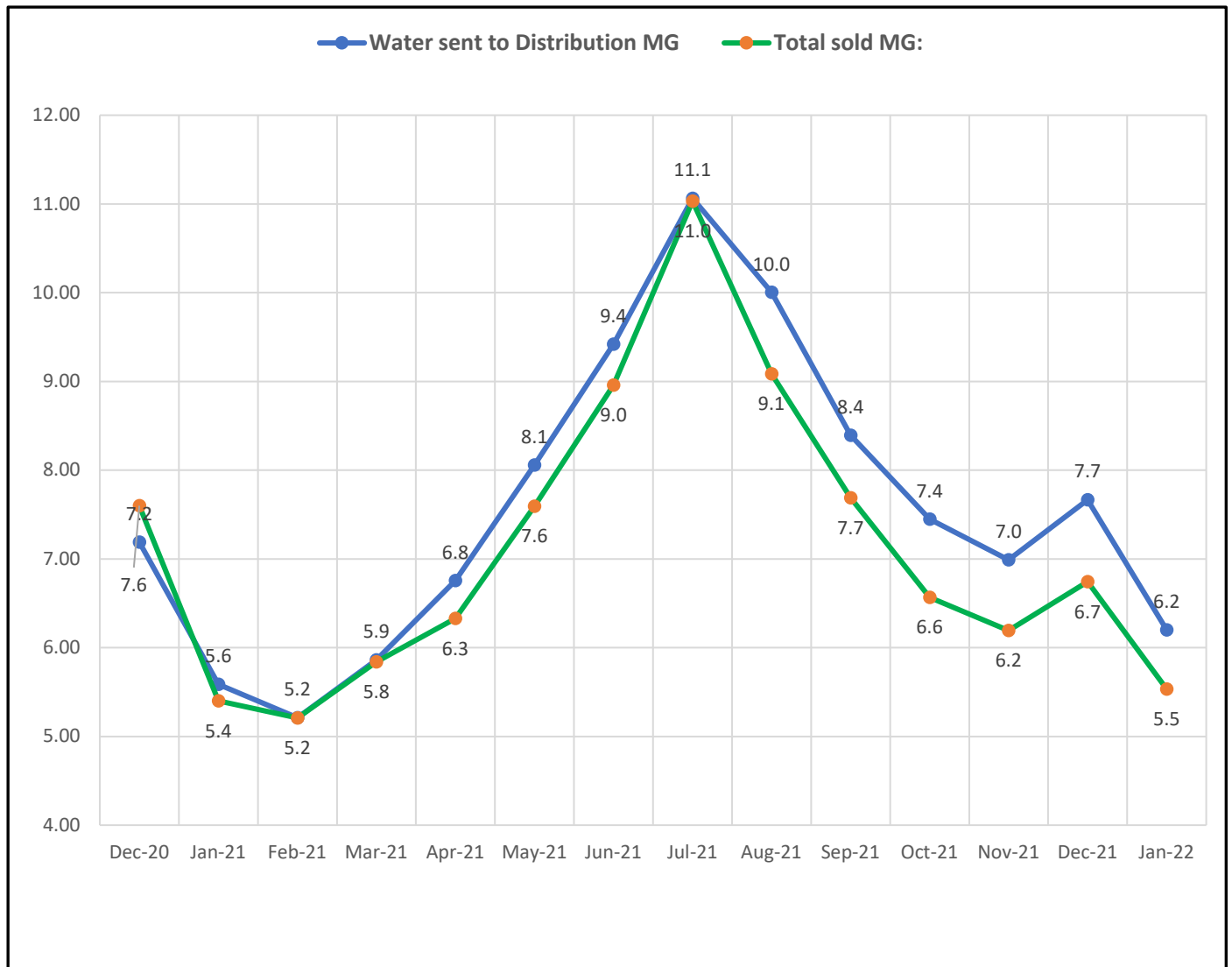
Total Water Treated :	7.9775	MG
Accounted for Water Used :	1.7775	MG
Water Sent to Distribution :	6.2000	MG
Water Sold :	5.5343	MG
Distribution Leakage :	0.6657	MG
Percent of Unaccounted for Water :	10.74	%

Data Period	February 1st - 28th, 2022	Booster System Data
-------------	---------------------------	---------------------

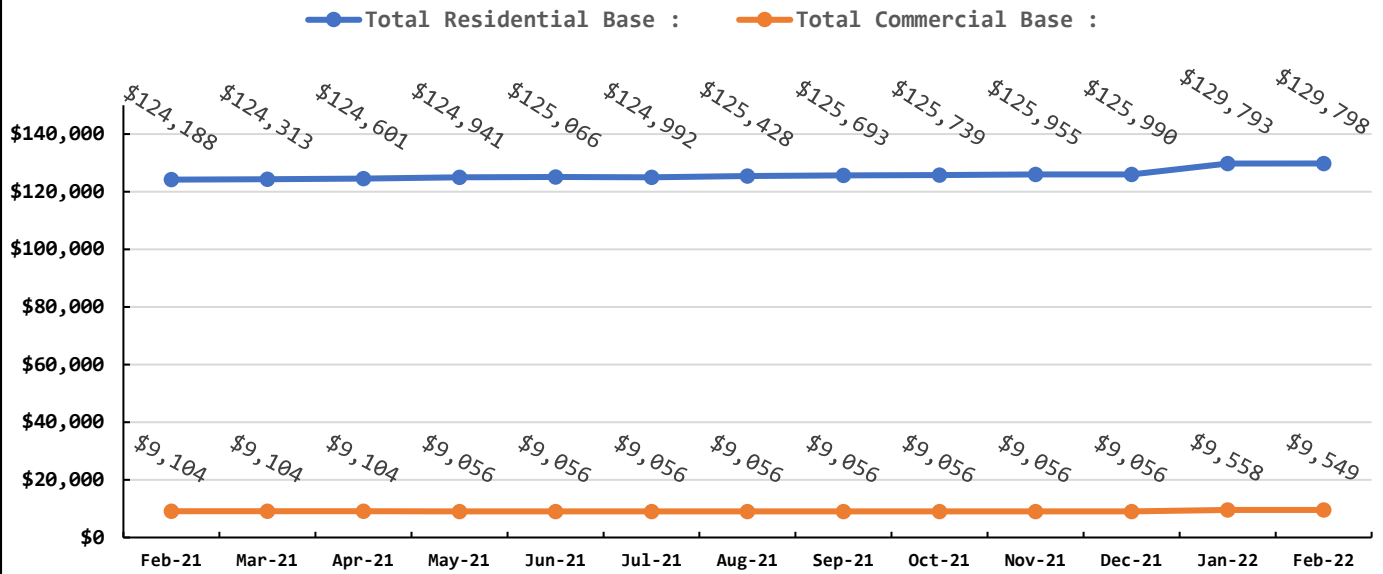
North Wellfield Booster High gpm :	610	<i>gpm</i>
North Wellfield Booster Average gpm :	133	<i>gpm</i>
North Wellfield High psi:	65	<i>psi</i>
North Wellfield Average psi:	59	<i>psi</i>
Total MG Booster pumped to Distribution at NWF:	5.3661	<i>MG</i>
Total MG Booster pumped to Distribution at SWF:	1.6731	<i>MG</i>
Total Booster Pumped to Distribution :	7.0392	<i>MG</i>
South Wellfield Booster High gpm:	1,500	<i>gpm</i>
South Wellfield Booster Average gpm:	42	<i>gpm</i>
South Wellfield Booster High psi:	68	<i>psi</i>
South Wellfield Booster Average psi:	60	<i>psi</i>
245th Distribution Pressure Readings per Month:	4,770	
Highest	69	<i>psi</i>
Lowest	43	<i>psi</i>
Average	62	<i>psi</i>



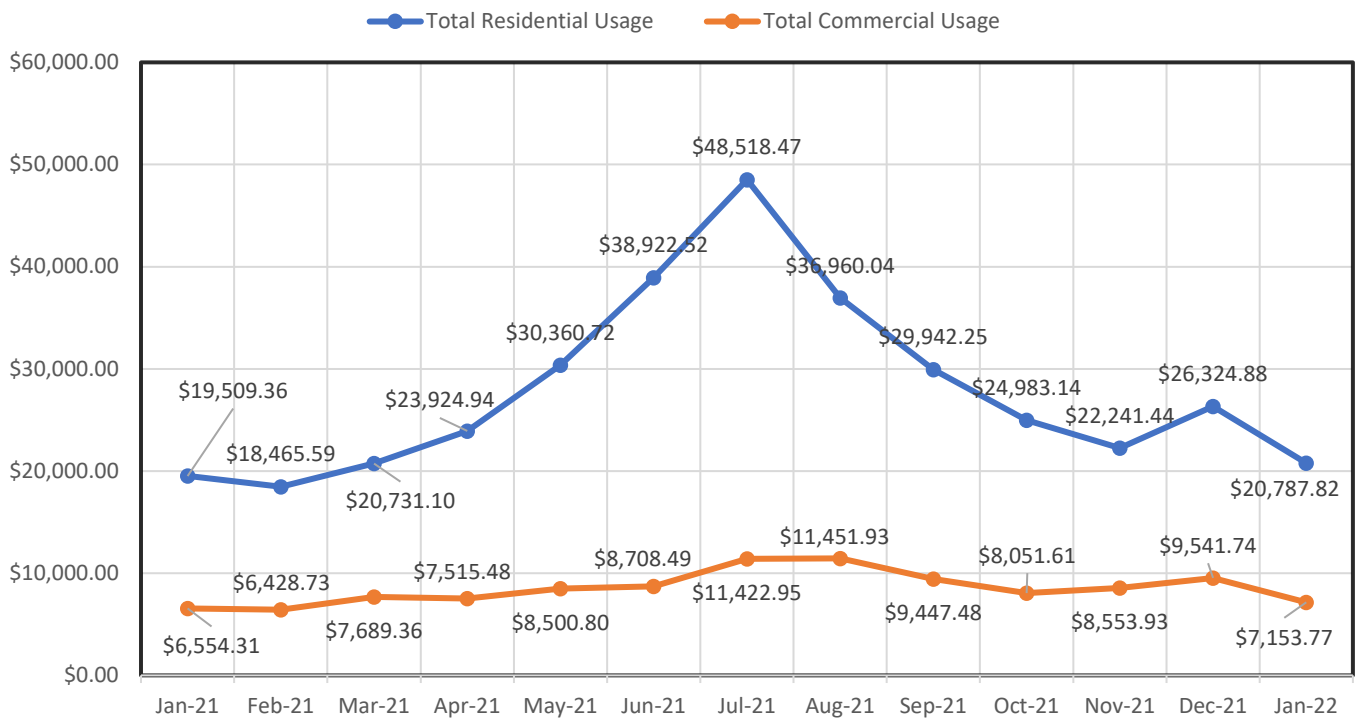
Data Period			Accounts Data		
February 1st - 28th, 2022			Residential Base Rates	\$129,798.17	\$
January 1 - 31, 2022			Residential Usage	\$20,787.82	\$
February 1st - 28th, 2022			Commercial Base Rate	\$9,549.48	\$
January 1 - 31, 2022			Commercial Usage	\$7,153.77	\$
			Fire Flow Rate	\$1,221.47	\$
New Residential Accounts	2,718	ea	Backflow Assembly Rate	\$357.95	\$
Commercial Accounts	100	ea	Contract Reimbursement	0	\$
Fire Flow Accounts	4	ea	Other Fees & Charges	\$4,601.18	\$
Backflow Accounts	34	ea	Total:	\$173,469.84	\$

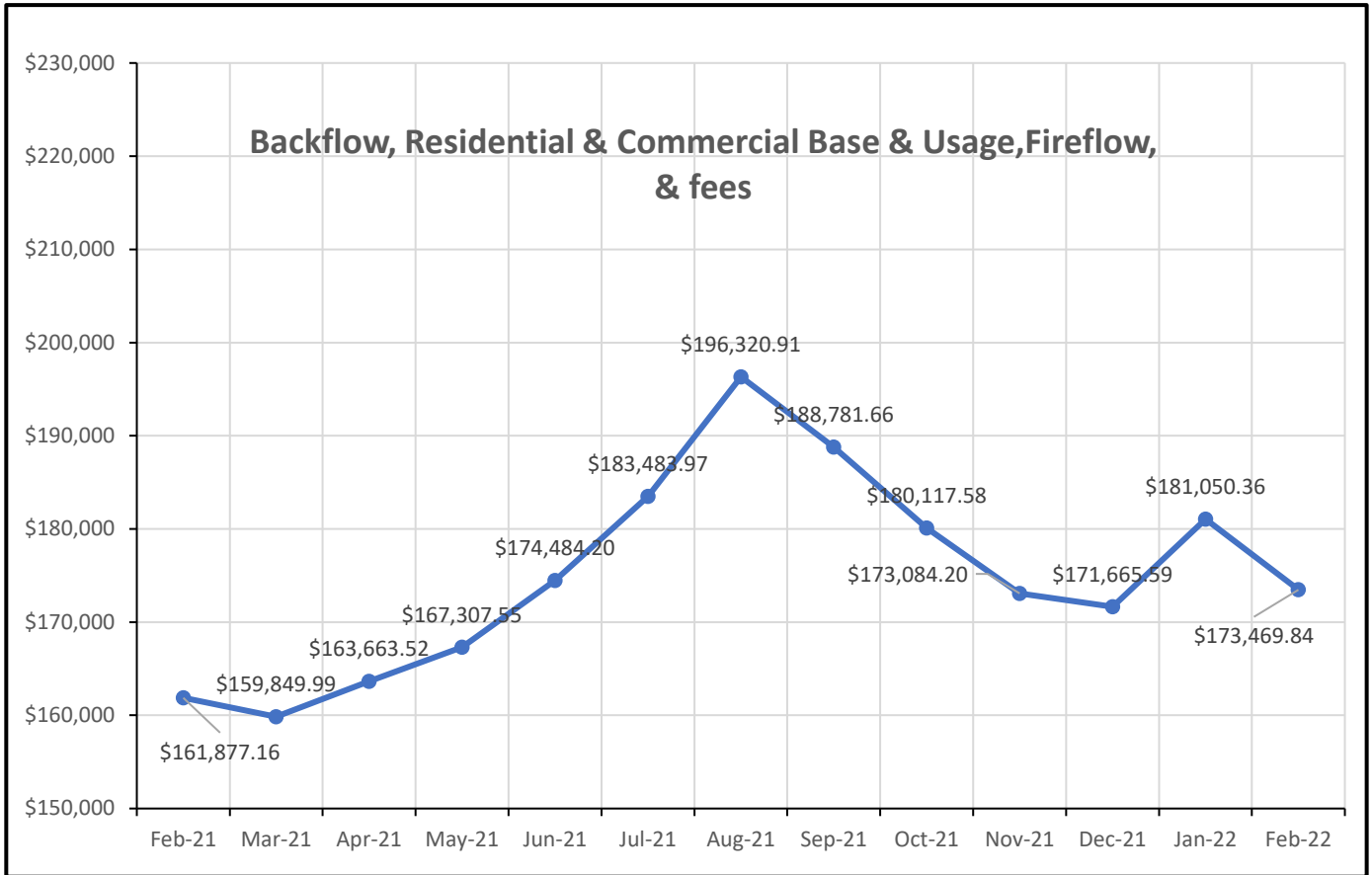


Residential & Commercial Base



Residential & Commercial Usage





Data Period

February 1st - 28th, 2022

Operations Data

Past Due Accounts	289	ea
Properties with Liens	26	ea
Accounts Locked Off	3	ea
Water Main Locates	27	ea
Water Quality Complaints	21	ea
Customer Service Calls	31	ea
Customer Valves Installed	3	ea
New Services Installed	1	ea
NBWD Office & Grounds Water Use:	0.0883	MG

Data Period

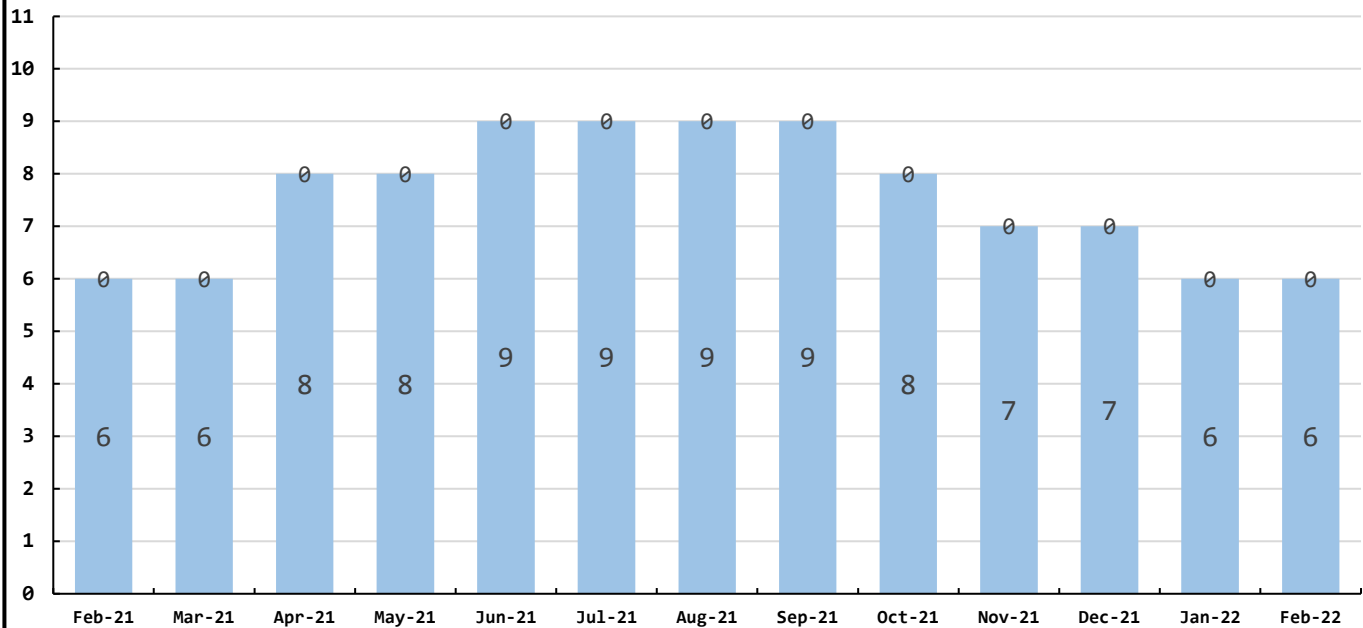
February 1st - 28th, 2022

Water Quality Data

Coliform Samples Collected	6	ea
Coliform Samples Absent	6	ea
Coliform Samples Postive	0	ea
Coliform Sample Positive E.coli	0	ea
NWF Arsenic	5	ug/L
SWF Arsenic	2	ug/L
NWF Arsenic Annual Running Average	4.94	ug/L
SWF Arsenic Running Annual Average	2.81	ug/L

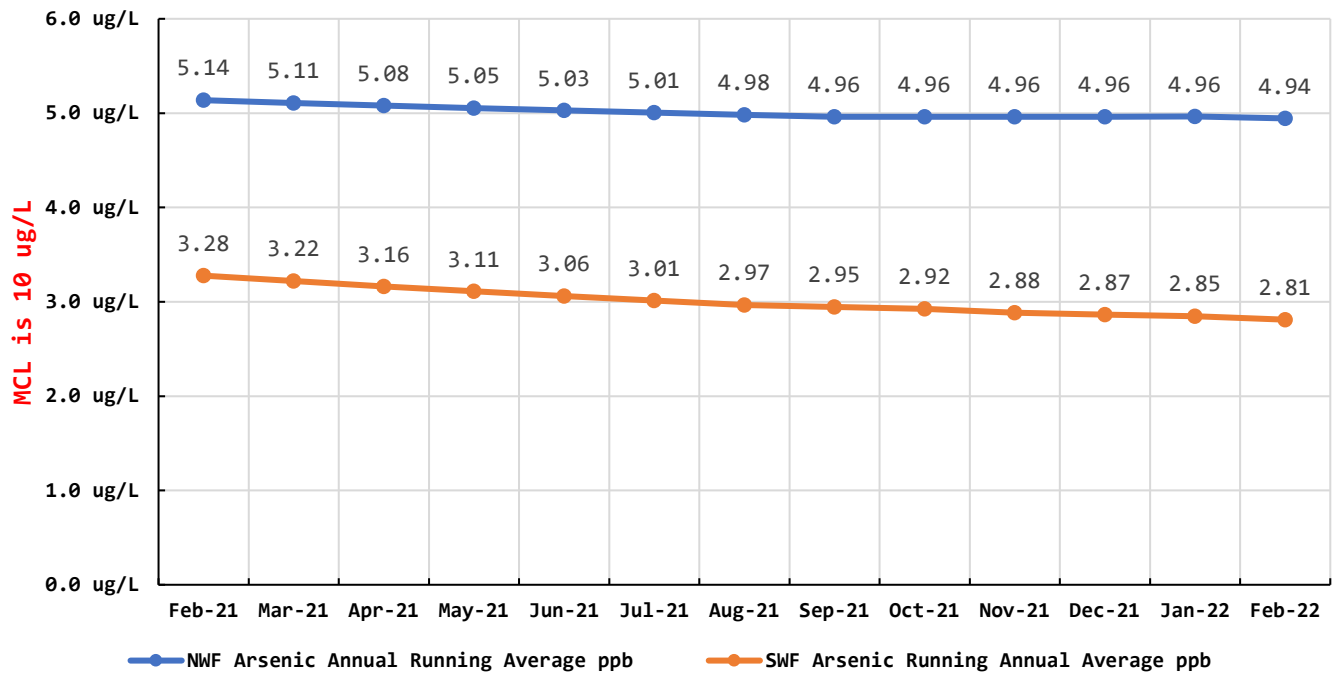
Coliform Bacteria Samples

Coliform Samples Collected Coliform Samples Positive

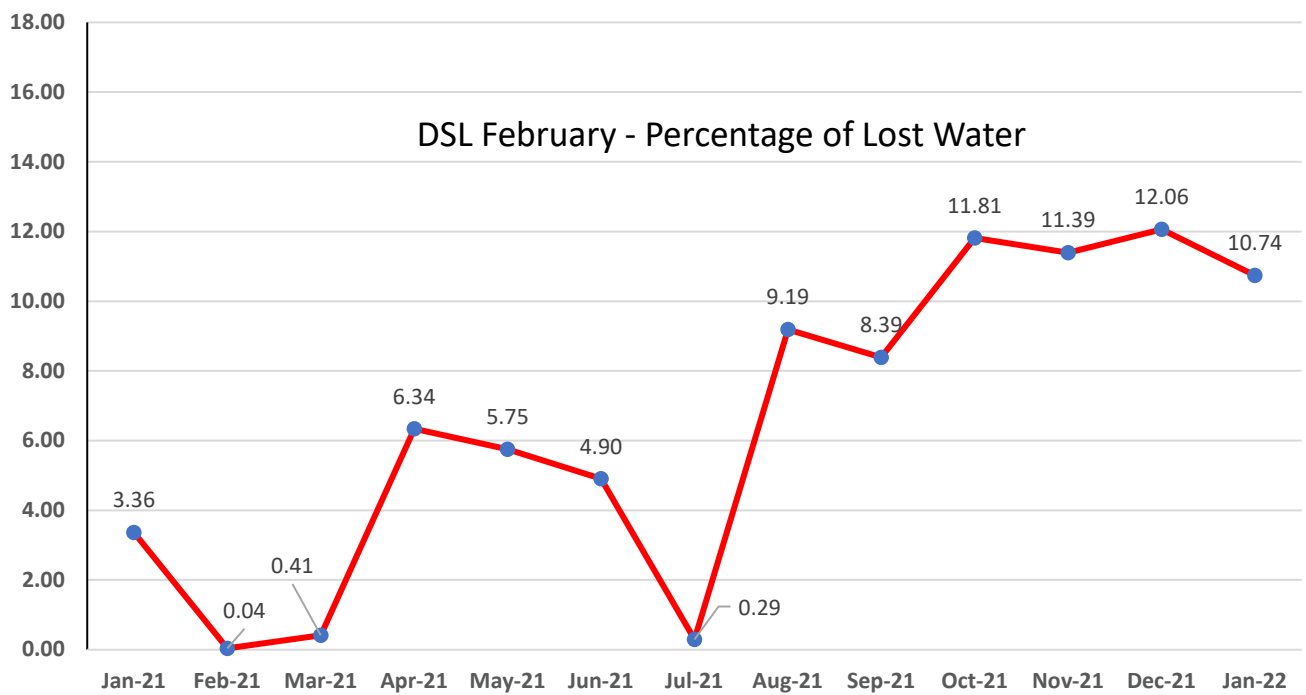


Arsenic Monthly Annual Average

micrograms per liter (ug/L)



DSL February - Percentage of Lost Water



General Managers Report for February 2022:

- Inland electric awaiting splicing connectors for Wiegardt well field water plant job.
- Zenna Construction is in town for the summer. They are pulling conduit for fiber connection for Spectrum/Charter. This is happening in Ocean Park for 1 year I am told.
- In house lab. Have sent in our testing and results to an accredited lab for verification. Was informed on Wednesday that all our testing was spot on. I am awaiting the paperwork to be emailed to me. When I get them, I will be sending our application in for our accredited lab.
- New control heads for the rest of the North Water Treatment Plant have been installed and wired up and ready to go. We will come online on Friday March 18th.
- Pilot test continues.
- Parts have been ordered for the addition of filter to waste valves at the South Water Treatment Plant. Some of the parts are here now, when the rest come in we will get this installed and get it operational.
- In April, we will be installing antennas for AMI system.
- Like to talk over a customer interrogation report. You see the information that is provided to customers. Obtain an understanding.
- Personnel - have received their Distribution 1, Certificate, another has just received their Water Treatment Plant Operator 3, Certificate, and the Backflow Tester certificate.
- Personnel – While going to classes on their own time has a GPA of 3.92 and is on the honor roll.

February Work Orders

Read/Leave On	5
Turn Off/Lock – Customer Request	4
Turn Off/Lock – Non-Payment	3
Interrogate Meter	0
Locates	27
Unlock/Turn On	4
Test Backflow	1
Miscellaneous	4
Replace Meter Box	0
Low Pressure	0
Check Customer Valves	0
Dirty Water Complaints	21
Replace Meter	0
Install New Service	1
Assist Customer	0
Check For Leak	7
Re-Read Meter	0
Install Customer Control Valve	3
Total	80