

NORTH BEACH WATER DISTRICT

GENERAL MANAGERS REPORT

For September Meeting - 2023

Well Field Output

<u>August 1, 2023</u>	to	<u>August 31, 2023</u>	NWF Master Meter:	<u>9.6311</u>	mg
			SWF Master Meter:	<u>6.4546</u>	mg
			Total Pumped to Plants:	<u>16.0857</u>	MG

July Water Plant Production

<u>July 1, 2023</u>	to	<u>July 31, 2023</u>	NWF Master Meter:	<u>8.4556</u>	mg
			SWF Master Meter:	<u>5.4826</u>	mg
			Accounted for Water:	<u>3.5282</u>	MG
			Total Water Pumped:	<u>13.9382</u>	MG

Metering Period

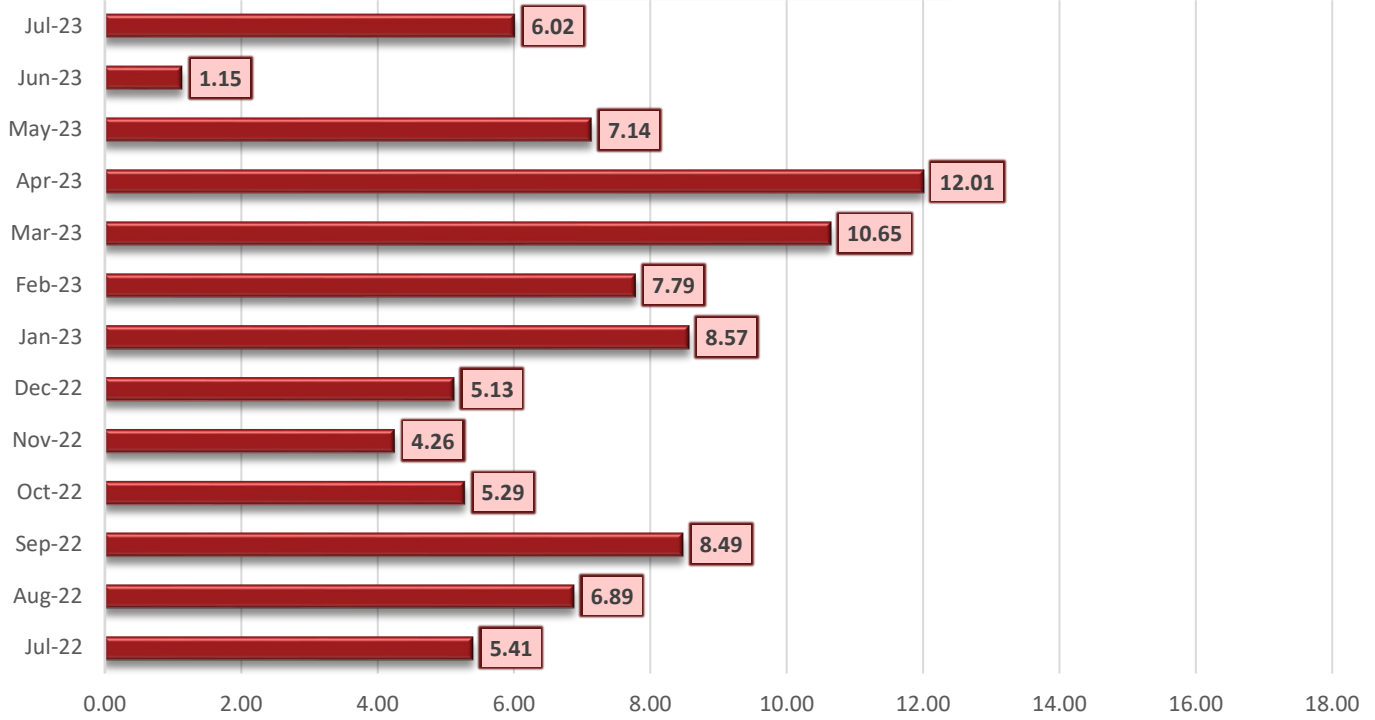
<u>July 1, 2023</u>	to	<u>July 31, 2023</u>	Total Water Sold :	<u>9.7830</u>	MG
---------------------	----	----------------------	---------------------------	----------------------	-----------

July's Accounted for Water:

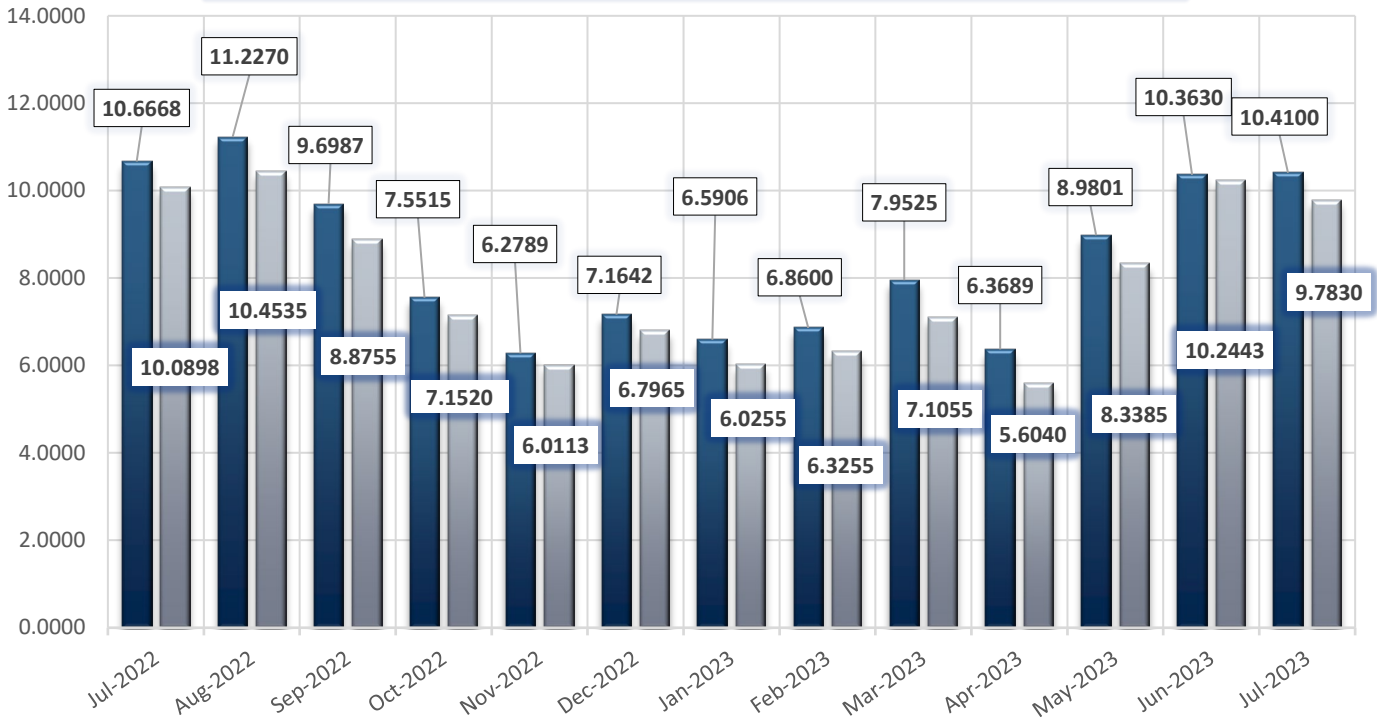
	NWF Backwash :	<u>0.4915</u>	mg
	SWF Backwash :	<u>1.1082</u>	mg
Distribution Flushing, Fire Dept, Pac Co & Waterline Leak Repair's:		<u>1.9158</u>	mg
	NBWD use NWF & SWF:	<u>0.0127</u>	mg
	Total Accounted for Water:	<u>3.5282</u>	MG

	Total Water Treated :	<u>13.9382</u>	MG
	Accounted for Water Used :	<u>3.5282</u>	MG
	Water Sent to Distribution :	<u>10.4100</u>	MG
	Water Sold :	<u>9.7830</u>	MG
	Distribution Leakage :	<u>0.6270</u>	MG
	Percent of Unaccounted for Water :	6.02	%

DSL - Percentage of Lost Water



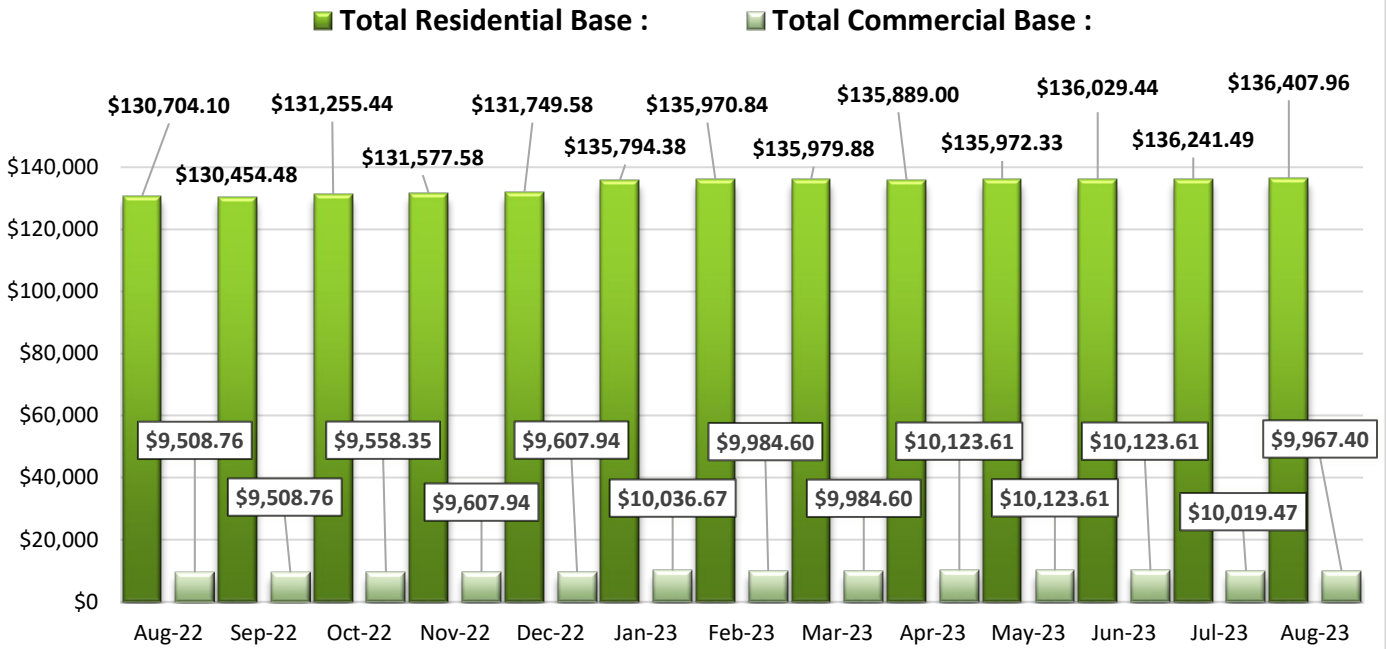
Water sent to Distribution MG Total sold MG:



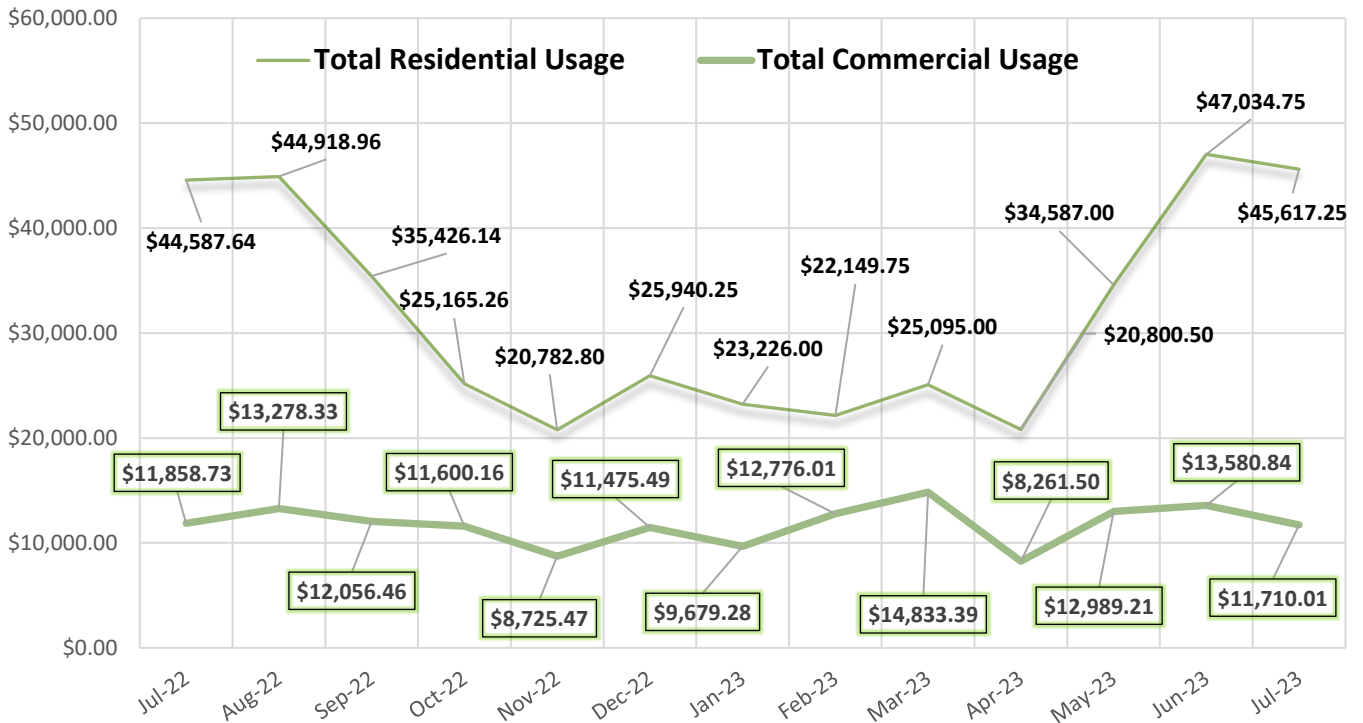
Data Period	August 1-31, 2023		Booster System Data	
	North Wellfield Booster High GPM :	1,040		<i>gpm</i>
	North Wellfield Booster Average GPM :	203		<i>gpm</i>
	North Wellfield High psi:	65		<i>psi</i>
	North Wellfield Average psi:	56		<i>psi</i>
	Total MG Booster pumped to Distribution at NWF:	8.8849		<i>MG</i>
	Total MG Booster pumped to Distribution at SWF:	5.7134		<i>MG</i>
	Total Booster Pumped to Distribution :	14.5983		<i>MG</i>
	South Wellfield Booster High gpm:	1,449		<i>gpm</i>
	South Wellfield Booster Average gpm:	136		<i>gpm</i>
	South Wellfield Booster High psi:	65		<i>psi</i>
	South Wellfield Booster Average psi:	56		<i>psi</i>
	245th Distribution Pressure Readings :			
		Highest	66	<i>psi</i>
		Lowest	24	<i>psi</i>
		Average	55	<i>psi</i>

Data Period		Accounts Data		
August 1 - 31, 2023		Residential Base	\$136,407.96	\$
July 1 - 31, 2023		Residential Usage	\$45,617.25	\$
August 1 - 31, 2023		Commercial Base	\$9,967.40	\$
July 1 - 31, 2023		Commercial Usage	\$11,710.01	\$
Residential Accounts	2,775	<i>ea</i>	Fire Flow Rate	\$1,282.52
Commercial Accounts	98	<i>ea</i>	Backflow Assembly Rate	\$783.75
Fire Flow Accounts	4	<i>ea</i>	Other Fees & Charges	\$3,798.00
Backflow Accounts	49	<i>ea</i>	Total:	\$209,566.89

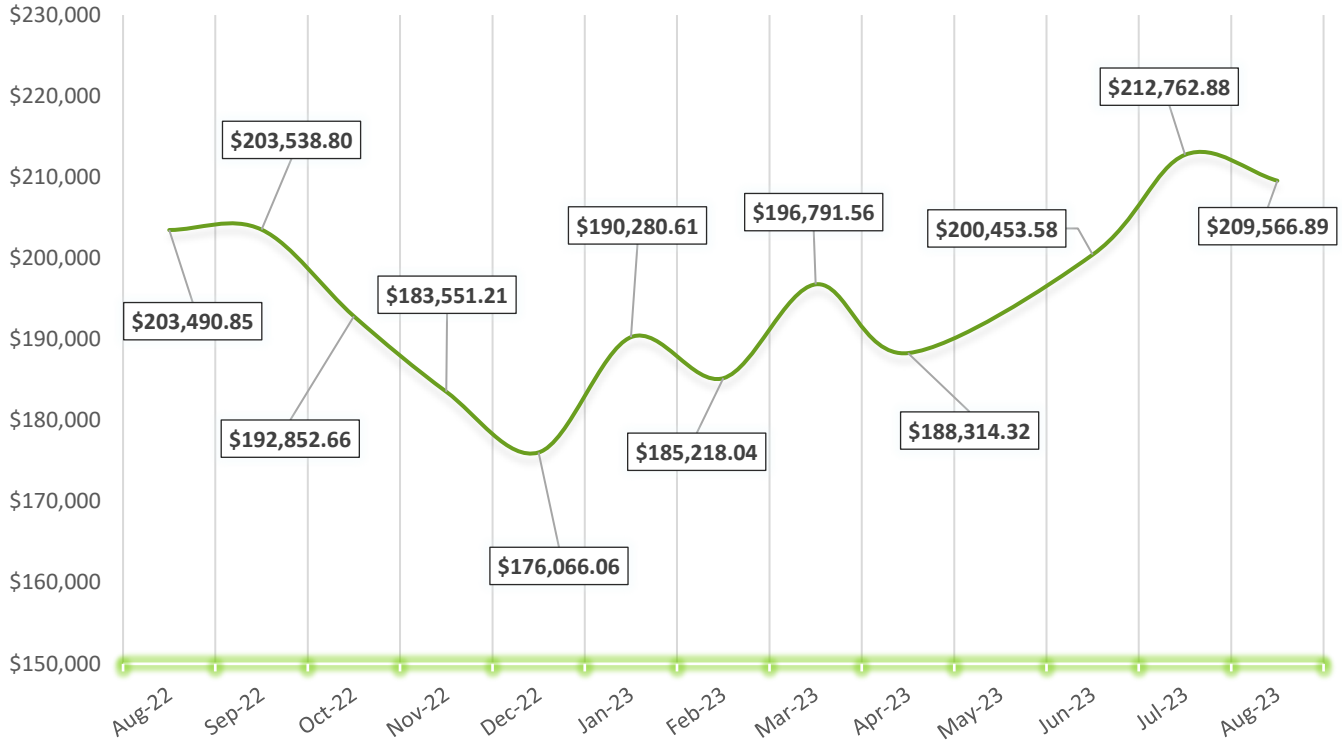
Residential & Commercial Base



Residential & Commercial Usage

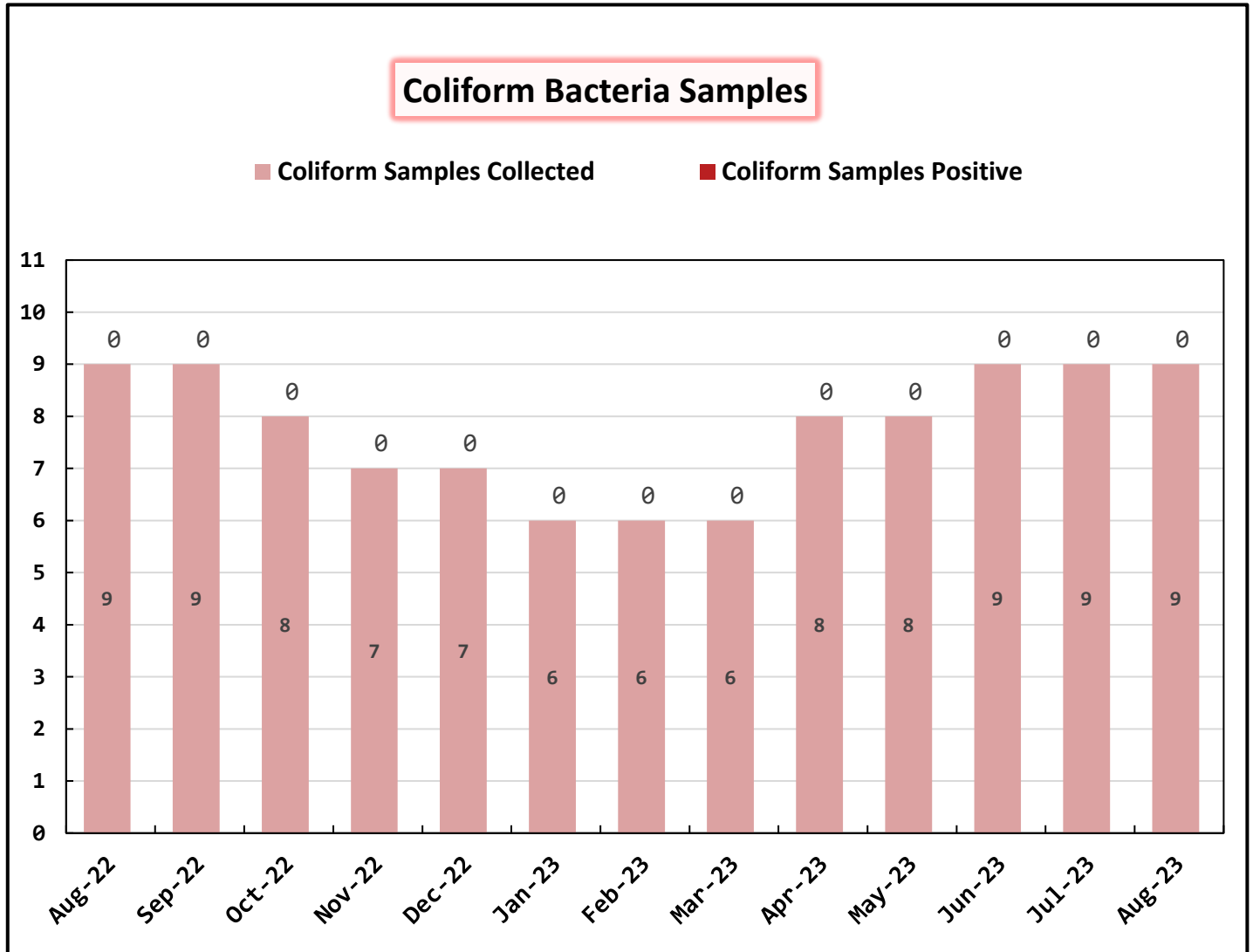


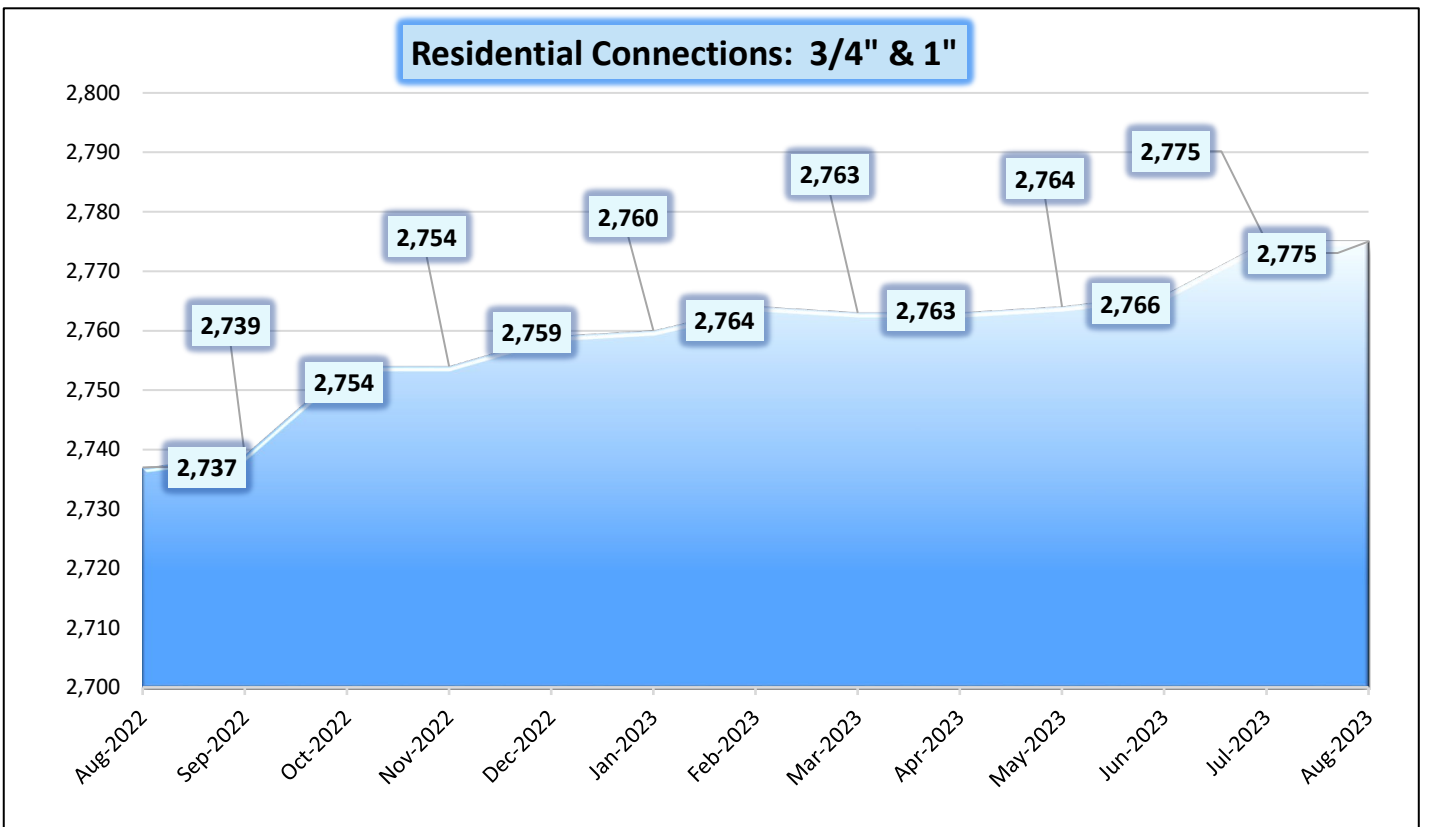
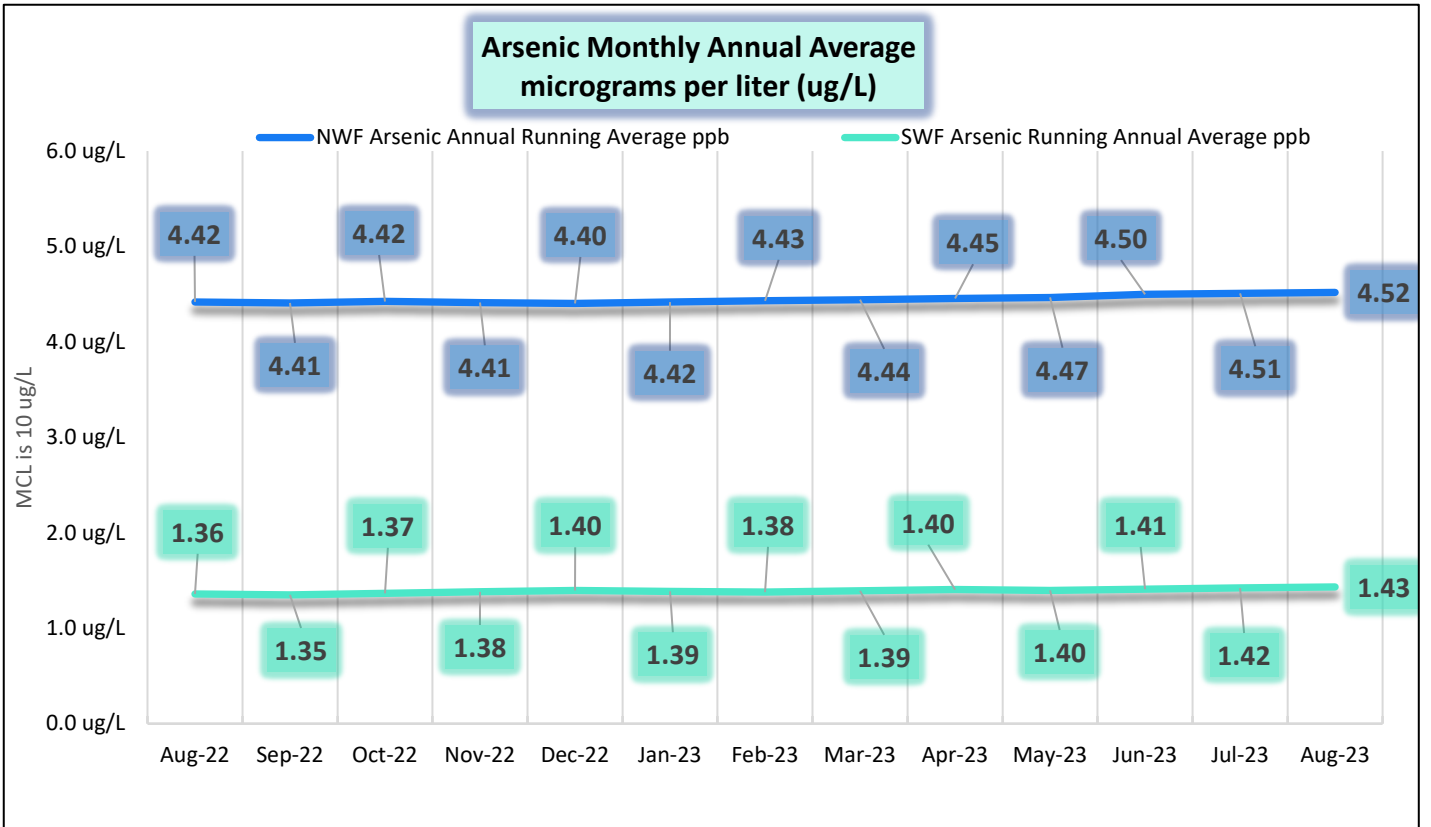
**Backflow, Residential & Commercial Base & Usage, Fireflow,
& fees**



Data Period	August 1 - 31, 2023	Operations Data
		Past Due Accounts 213 <i>ea</i>
		Properties with Liens 22 <i>ea</i>
		Accounts Locked Off 4 <i>ea</i>
		Water Main Locates 45 <i>ea</i>
		Water Quality Complaints 56 <i>ea</i>
		Customer Service Calls 59 <i>ea</i>
		Customer Valves Installed 2 <i>ea</i>
		New Services Installed 0 <i>ea</i>
		NBWD Office & Grounds Water Use: <u><u>0.0127</u></u> <i>MG</i>

Data Period	August 1 - 31, 2023		Water Quality Data	
	Coliform Samples Collected	9		<i>ea</i>
	Coliform Samples Absent	9		<i>ea</i>
	Coliform Samples Positive	0		<i>ea</i>
	Coliform Sample Positive E.coli	0		<i>ea</i>
	NWF Arsenic	5.00		<i>ug/L</i>
	SWF Arsenic	2.00		<i>ug/L</i>
	NWF Arsenic Annual Running Average	4.52		<i>ug/L</i>
	SWF Arsenic Running Annual Average	1.43		<i>ug/L</i>





General Managers' Report September 2023

- The site plan that was drawn up by Jeff Sterling is in the hands of the Pacific County Planning Department. As soon as this is approved, we will get the corners placed and then go out for fencing bids. Which is a subject we should talk about.
- After the Fourth of July the distribution system really got stirred up. We received 39 customer complaints by August 2nd. We were out flushing standpipes and meter service lines. Trying not to stir it up worse.

Then on August 8th we received an unsatisfactory Bac-T result from sample site #26. Out of six samples taken one was positive for Total Coliform. This was way north of where the water complaints were coming from. We retook the mandated five samples. Two of the combined Raw water samples were taken before treatment from the South and North Well Field Treatment Plants and three from our distribution sample sites #22, #15, and #26. These came back satisfactory. We had brown water at the south end and chlorine residual was dropping and it was hard to keep it within a tolerable range. After all this I decided to flush the system.

We had the message sign up and used the Pacific County call out, ads in the newspaper, the post office, and stores.

I made the right decision based on what had happened and I stand by that. From this experience I have changed the flushing routine to 4 times a year, March, June, September, and December.

- We pumped out the backwash basin at the south treatment plant. Thanks to the City of Long Beach for allowing us to use there 6" white pump. It is quite the pump. Pictures say it all. (attached)

- We had an impellor completely disintegrate at the North Booster Station. Cavitation ate this up. Quick thinking by the crew saw them pull and isolate this so they were able to get the system back up and running in a very short amount of time. Two hours. The new impellor is being milled or trimmed to our required specs for the total dynamic head required. We will also put on a new wear ring and sealed bearing.
- Department of Health was here September 13th for our Sanitary Survey.
- Talks with Gray and Osborne on the Water System Plan will be on September 25th.

August Work Orders

Read/Leave On	15
Turn Off/Lock – Customer Request	7
Turn Off/Lock – Non-Payment	4
Interrogate Meter	7
Locates	45
Unlock/Turn On	12
Test Backflow	1
Miscellaneous	2
Replace Meter Box	1
Low Pressure	0
Check Customer Valves	0
Dirty Water Complaints	56
Replace Meter	1
Install New Service	0
Assist Customer	6
Check For Leak	3
Re-Read Meter	0
Install Customer Control Valve	2
Total	162