

NORTH BEACH WATER DISTRICT

GENERAL MANAGERS REPORT

November Meeting - 2023

Well Field Output

<u>October 1, 2023</u>	to	<u>October 31, 2023</u>	NWF Master Meter:	<u>6.7705</u>	mg
			SWF Master Meter:	<u>3.3353</u>	mg
			Total Pumped to Plant:	<u>10.1058</u>	MG

July Water Plant Production

<u>September 1, 2023</u>	to	<u>September 30, 2023</u>	NWF Master Meter:	<u>6.2626</u>	mg
			SWF Master Meter:	<u>5.5422</u>	mg
			Accounted for Water:	<u>2.5424</u>	MG
			Total Water Pumped:	<u>11.8048</u>	MG

Metering Period

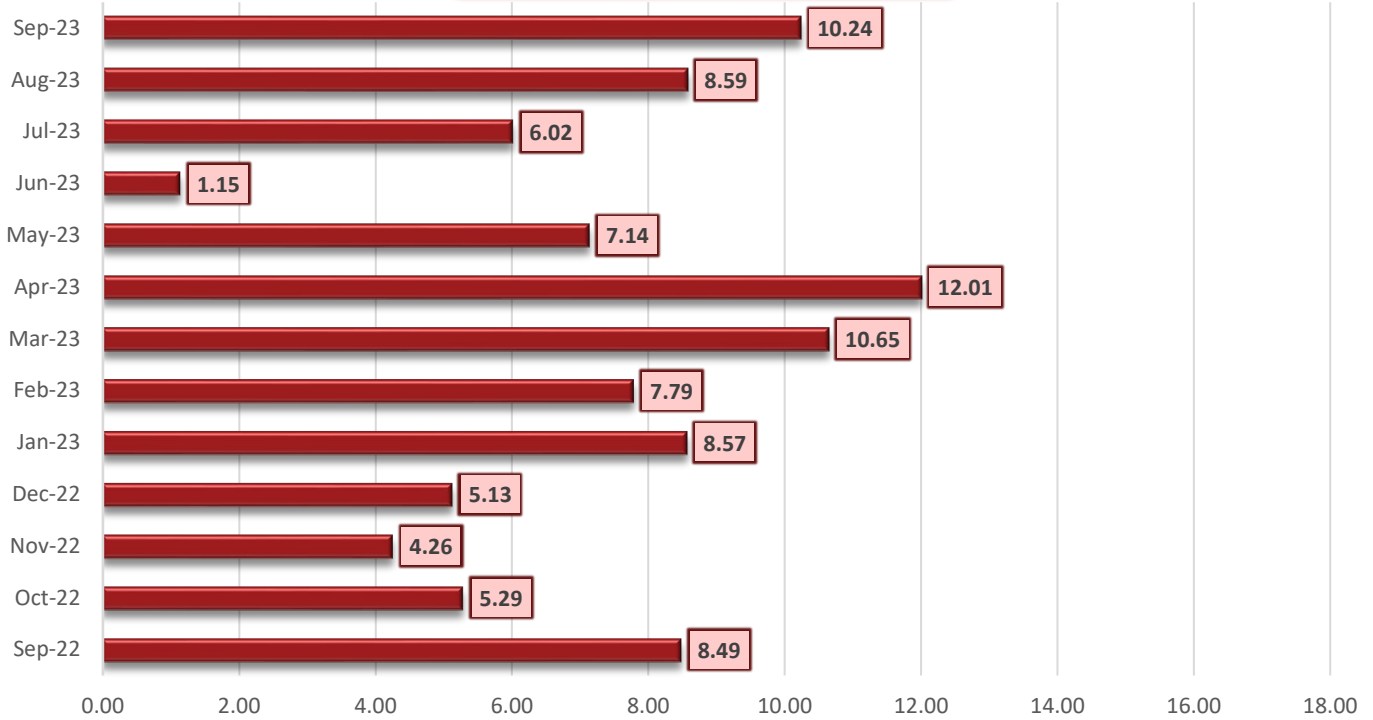
<u>September 1, 2023</u>	to	<u>September 30, 2023</u>	Total Water Sold :	<u>8.3135</u>	MG
--------------------------	----	---------------------------	--------------------	---------------	----

September's Accounted for Water:

	NWF Backwash :	<u>0.3284</u>	mg
	SWF Backwash :	<u>0.5814</u>	mg
Distribution Flushing, Fire Dept, Pac Co & Waterline Leak Repair's:		<u>1.6117</u>	mg
	NBWD use NWF & SWF:	<u>0.0209</u>	mg
	Total Accounted for Water:	<u>2.5424</u>	MG

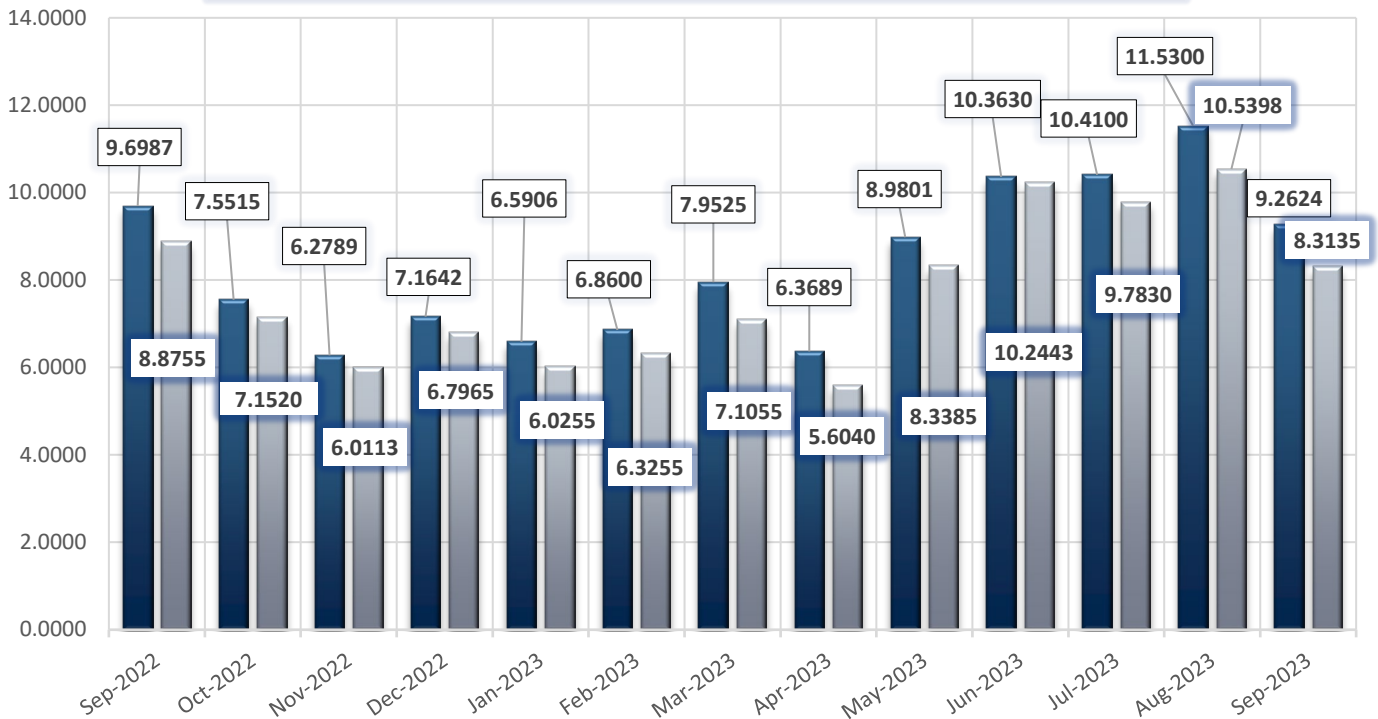
Total Water Treated :	<u>11.8048</u>	MG
Accounted for Water Used :	<u>2.5424</u>	MG
Water Sent to Distribution :	<u>9.2624</u>	MG
Water Sold :	<u>8.3135</u>	MG
Distribution Leakage :	<u>0.9489</u>	MG
Percent of Unaccounted for Water :	<u>10.24</u>	%

DSL - Percentage of Lost Water



■ Water sent to Distribution MG

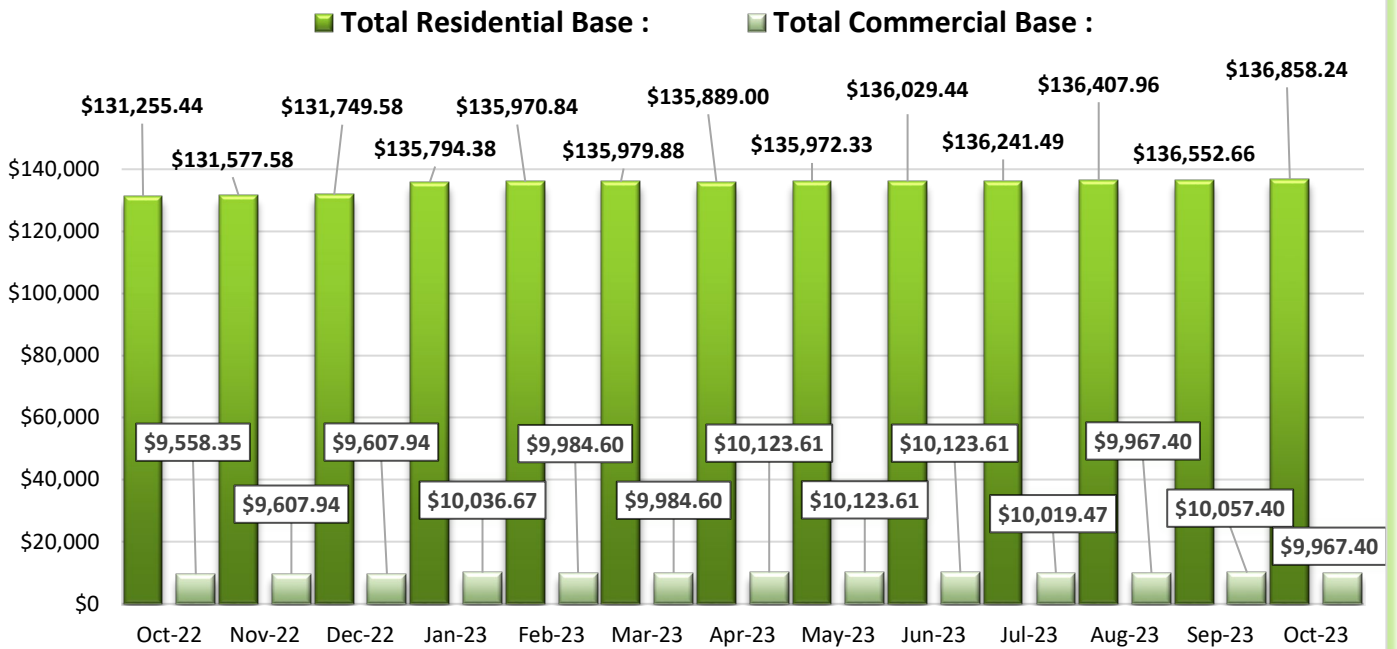
■ Total sold MG:



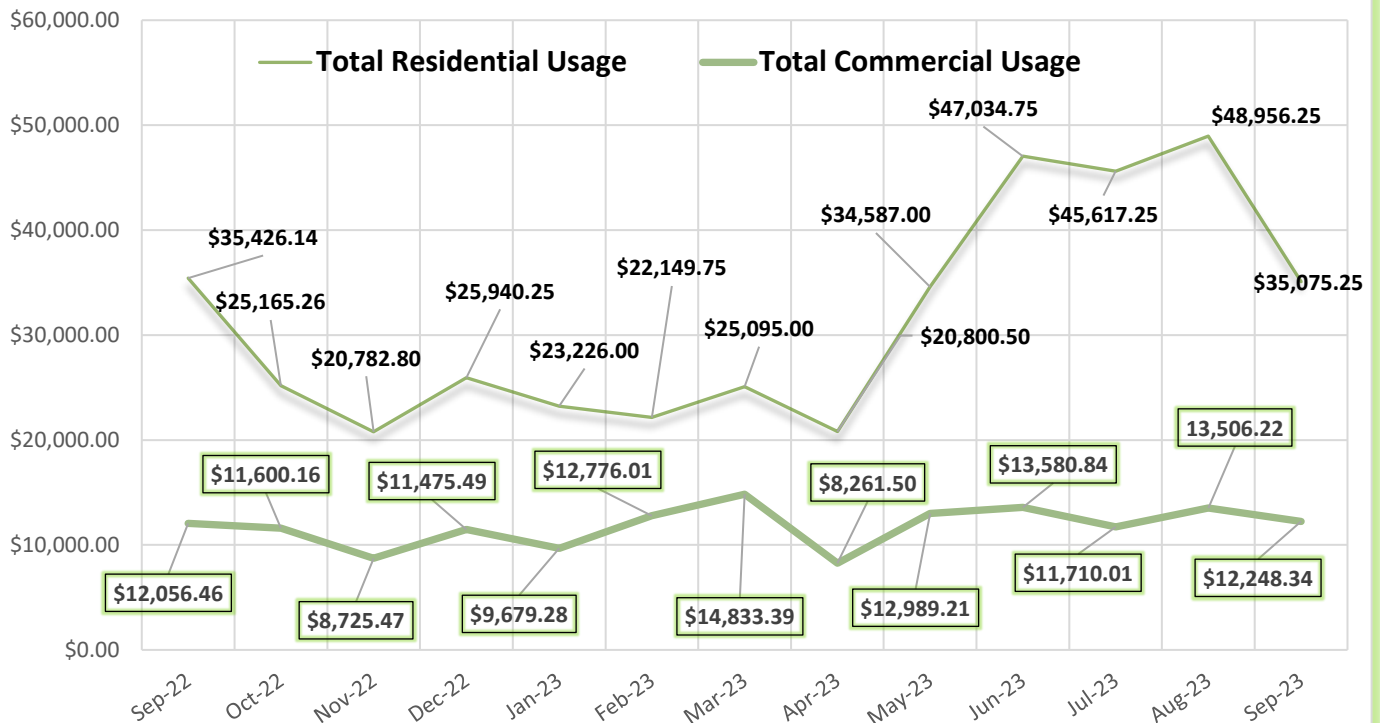
Data Period	October 1-31, 2023	Booster System Data		
North Wellfield Booster High GPM :		654	gpm	
North Wellfield Booster Average GPM :		139	gpm	
North Wellfield High psi:		66	psi	
North Wellfield Average psi:		55	psi	
Total MG Booster pumped to Distribution at NWF:		6.2983	MG	
Total MG Booster pumped to Distribution at SWF:		2.8355	MG	
Total Booster Pumped to Distribution :		9.1338	MG	
South Wellfield Booster High gpm:		1,336	gpm	
South Wellfield Booster Average gpm:		522	gpm	
South Wellfield Booster High psi:		63	psi	
South Wellfield Booster Average psi:		56	psi	
245th Distribution Pressure Readings :				
Highest		65	psi	
Lowest		42	psi	
Average		57	psi	

Data Period			Accounts Data		
October 1 - 31, 2023			Residential Base	\$136,858.24	\$
September 1 - 30, 2023			Residential Usage	\$35,075.25	\$
October 1 - 31, 2023			Commercial Base	\$9,967.40	\$
September 1 - 30, 2023			Commercial Usage	\$12,248.34	\$
Residential Accounts	2,782	ea	Fire Flow Rate	\$1,282.52	\$
Commercial Accounts	98	ea	Backflow Assembly Rate	\$639.70	\$
Fire Flow Accounts	4	ea	Other Fees & Charges	\$4,137.00	\$
Backflow Accounts	46	ea	Total:	\$200,208.45	\$

Residential & Commercial Base



Residential & Commercial Usage



Backflow, Residential & Commercial Base & Usage, Fireflow, & fees



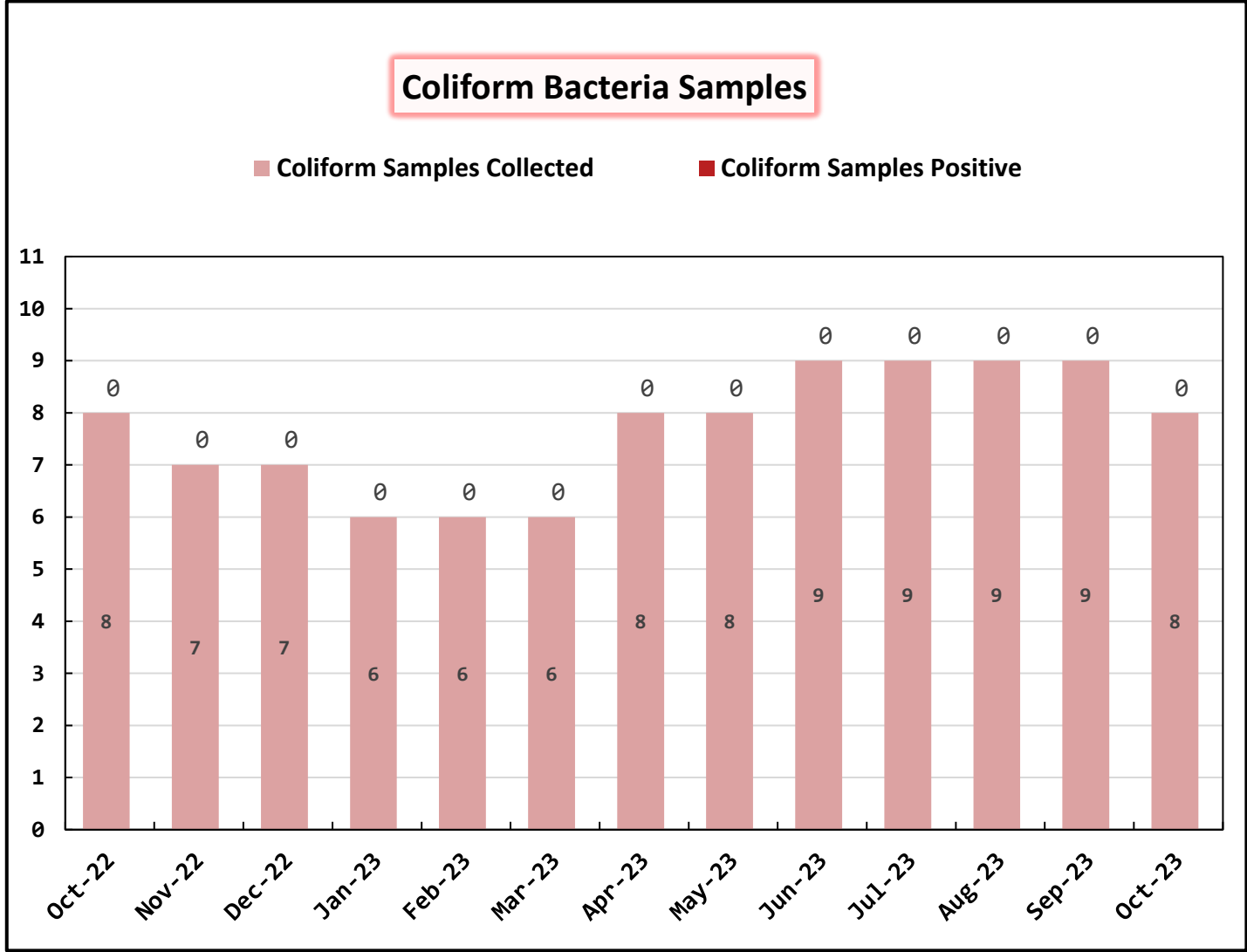
Data Period

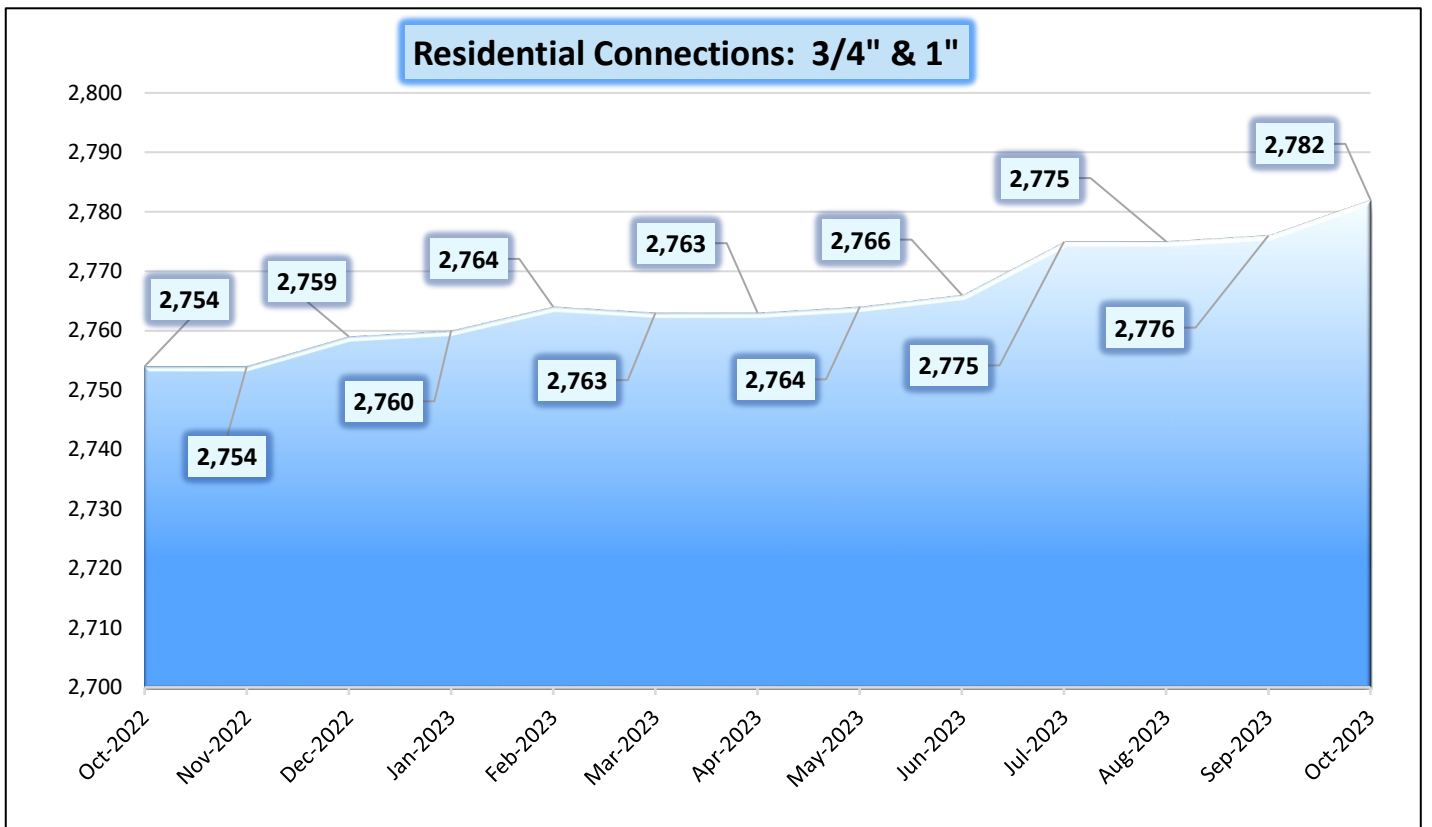
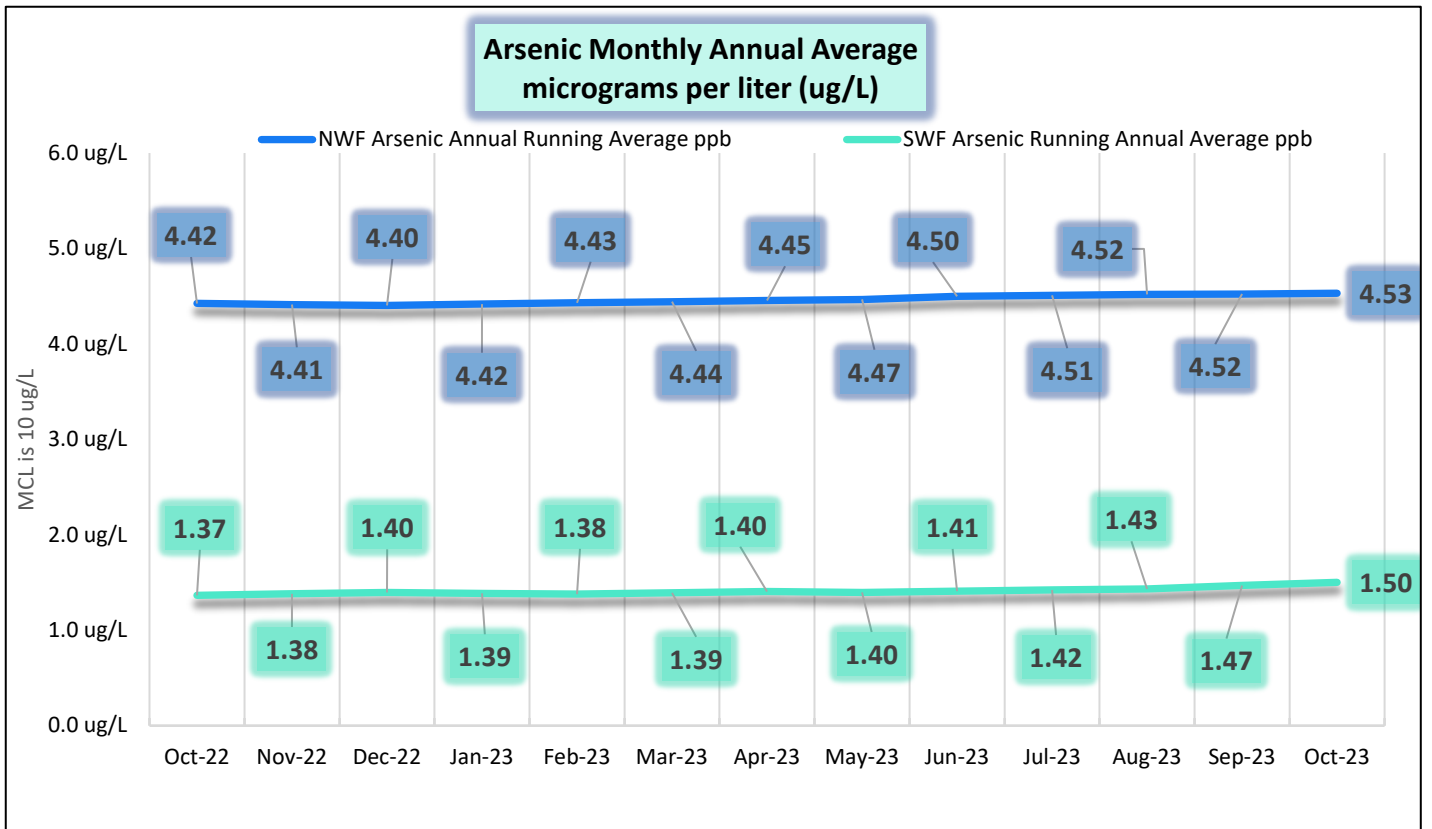
October 1 - 31, 2023

Operations Data

Past Due Accounts	247	ea
Properties with Liens	23	ea
Accounts Locked Off	2	ea
Water Main Locates	27	ea
Water Quality Complaints	10	ea
Customer Service Calls	46	ea
Customer Valves Installed	2	ea
New Services Installed	6	ea
NBWD Office & Grounds Water Use:	<u>0.0209</u>	MG

Data Period	October 1 - 31, 2023		Water Quality Data	
	Coliform Samples Collected	8		<i>ea</i>
	Coliform Samples Absent	8		<i>ea</i>
	Coliform Samples Positive	0		<i>ea</i>
	Coliform Sample Positive E.coli	0		<i>ea</i>
	NWF Arsenic	5.00		<i>ug/L</i>
	SWF Arsenic	3.00		<i>ug/L</i>
	NWF Arsenic Annual Running Average	4.53		<i>ug/L</i>
	SWF Arsenic Running Annual Average	1.50		<i>ug/L</i>





General Managers' Report November 2023

- DOH corrosion control Lead and Copper.
- PFAS – settlement
- South Water Plant - Excavation of old pipe and treatment testing of finished water.
- Budget 2024

October Work Orders

Read/Leave On	8
Turn Off/Lock – Customer Request	7
Turn Off/Lock – Non-Payment	2
Interrogate Meter	5
Locates	27
Unlock/Turn On	6
Test Backflow	0
Miscellaneous	0
Replace Meter Box	2
Low Pressure	0
Check Customer Valves	0
Dirty Water Complaints	10
Replace Meter	3
Install New Service	6
Assist Customer	2
Check For Leak	11
Re-Read Meter	0
Install Customer Control Valve	2
Total	91