

# NORTH BEACH WATER DISTRICT

## GENERAL MANAGERS REPORT

October Meeting - 2024

### Well Field Output

<u>September 1, 2024</u>	to	<u>September 30, 2024</u>	NWF Master Meter:	<u>13.0115</u>	mg
			SWF Master Meter:	<u>0.0000</u>	mg
			<b>Total Pumped to Plant:</b>	<b><u>13.0115</u></b>	<b>MG</b>

### Water Plant Production

<u>August 1, 2024</u>	to	<u>August 31, 2024</u>	NWF Master Meter:	<u>14.0795</u>	mg
			SWF Master Meter:	<u>0.0000</u>	mg
			Accounted for Water:	<u>13.0419</u>	MG
			<b>Total Water Pumped:</b>	<b><u>14.0795</u></b>	<b>MG</b>

### Metering Period

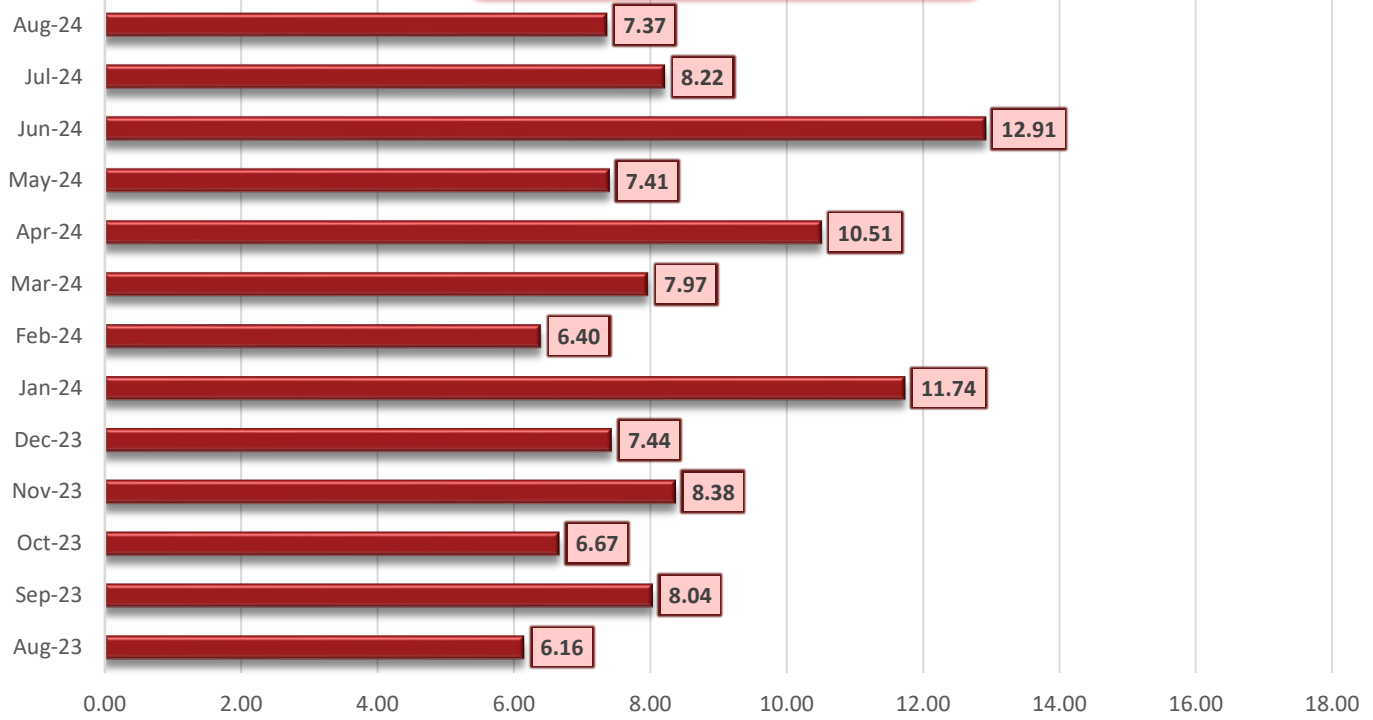
<u>August 1, 2024</u>	to	<u>August 31, 2024</u>	<b>Total Water Sold :</b>	<b><u>9.0795</u></b>	<b>MG</b>
-----------------------	----	------------------------	---------------------------	----------------------	-----------

### August Accounted for Water:

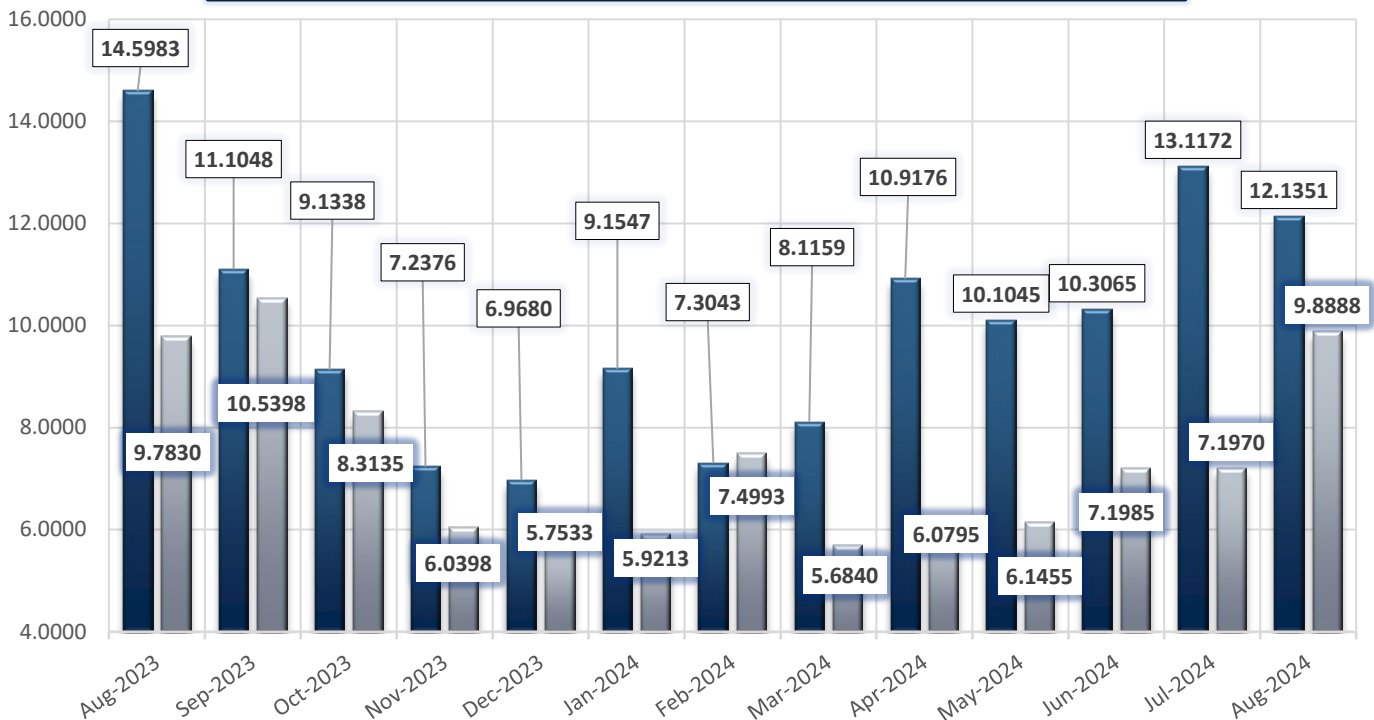
	NWF Backwash :	<u>0.5837</u>	mg
	SWF Backwash :	<u>0.0000</u>	mg
Distribution Flushing, Fire Dept, Pac Co & Waterline Leak Repair's:		<u>3.3510</u>	mg
	NBWD use NWF & SWF:	<u>0.0277</u>	mg
	<b>Total Accounted for Water:</b>	<b><u>13.0419</u></b>	<b>MG</b>

	Total Water Treated :	<u>14.0795</u>	MG
	Accounted for Water Used :	<u>13.0419</u>	MG
	Water Sent to Distribution :	<u>12.1351</u>	MG
	Water Sold :	<u>9.0795</u>	MG
	Distribution Leakage :	<u>1.0376</u>	MG
	<b>Percent of Unaccounted for Water :</b>	<b>7.37</b>	<b>%</b>

### DSL - Percentage of Lost Water



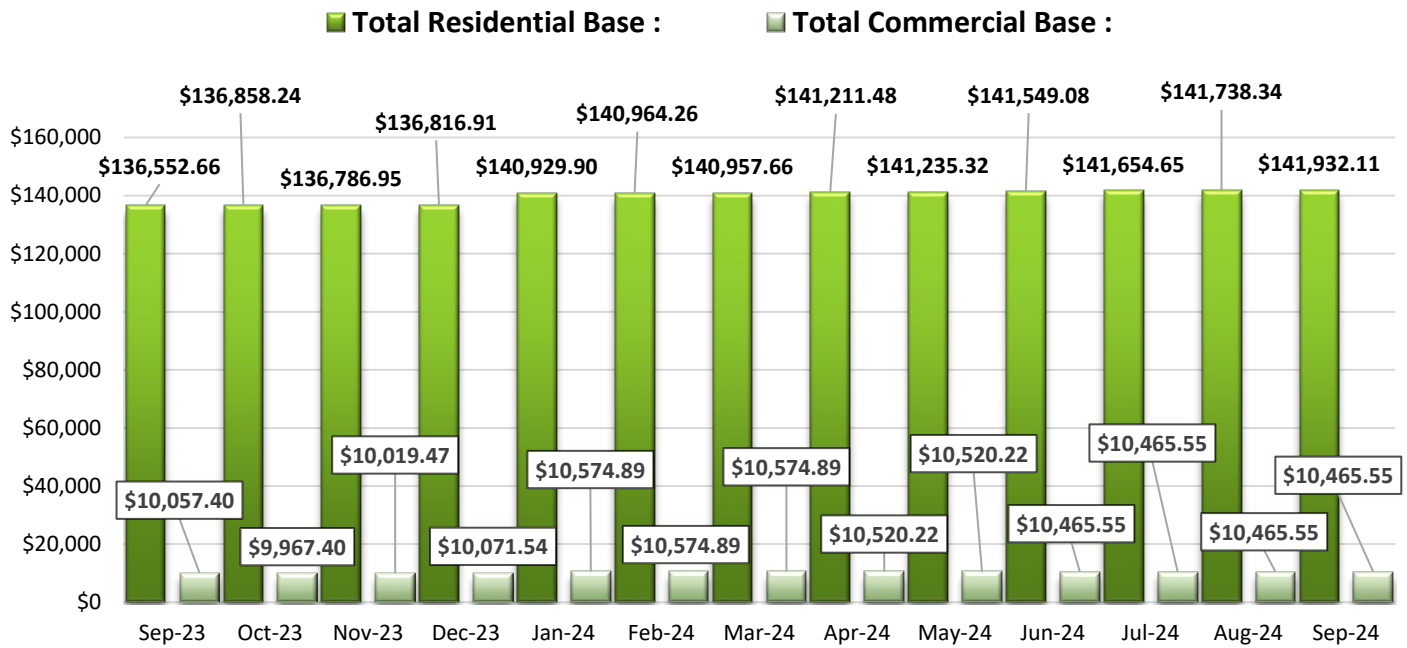
### Water sent to Distribution MG Total sold MG:



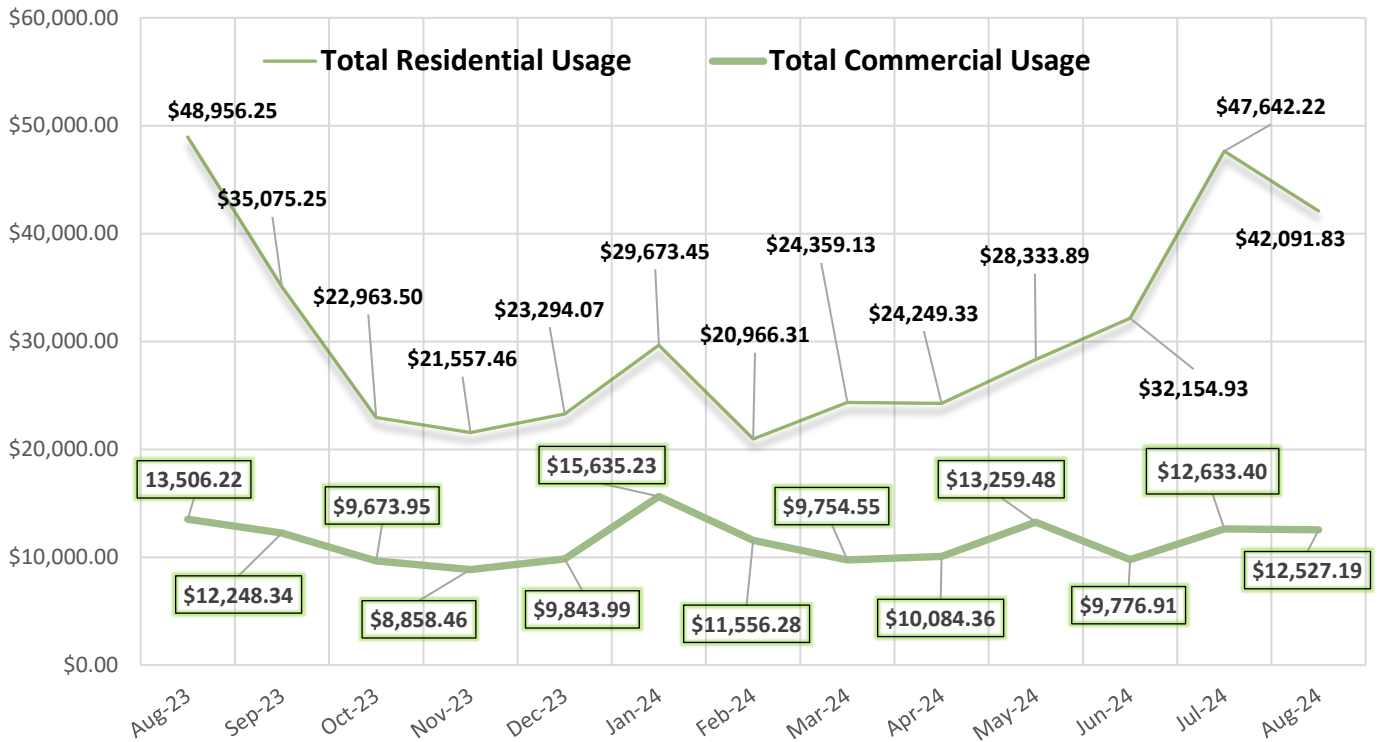
Data Period	August 1-31, 2024		Booster System Data	
	North Wellfield Booster High GPM :		846	<i>gpm</i>
	North Wellfield Booster Average GPM :		280	<i>gpm</i>
	North Wellfield High psi:		64	<i>psi</i>
	North Wellfield Average psi:		56	<i>psi</i>
	Total MG Booster pumped to Distribution at NWF:		12.1351	<i>MG</i>
	Total MG Booster pumped to Distribution at SWF:		0	<i>MG</i>
	Total Booster Pumped to Distribution :		12.1351	<i>MG</i>
	South Wellfield Booster High gpm:		201	<i>gpm</i>
	South Wellfield Booster Average gpm:		100	<i>gpm</i>
	South Wellfield Booster High psi:		63	<i>psi</i>
	South Wellfield Booster Average psi:		58	<i>psi</i>
	245th Distribution Pressure Readings :			
		Highest	61	<i>psi</i>
		Lowest	38	<i>psi</i>
		Average	55	<i>psi</i>

Data Period			Accounts Data		
September 1 -30, 2024			Residential Base	\$141,932.11	\$
August 1 - 31, 2024			Residential Usage	\$42,091.83	\$
September 1 -30, 2024			Commercial Base	\$10,465.55	\$
August 1 - 31, 2024			Commercial Usage	\$12,527.19	\$
Residential Accounts	2,802	ea	Fire Flow Rate	\$1,346.65	\$
Commercial Accounts	98	ea	Backflow Assembly Rate	\$645.65	\$
Fire Flow Accounts	4	ea	Other Fees & Charges	\$5,863.50	\$
Backflow Accounts	47	ea	Total:	\$214,872.48	\$

## Residential & Commercial Base



## Residential & Commercial Usage

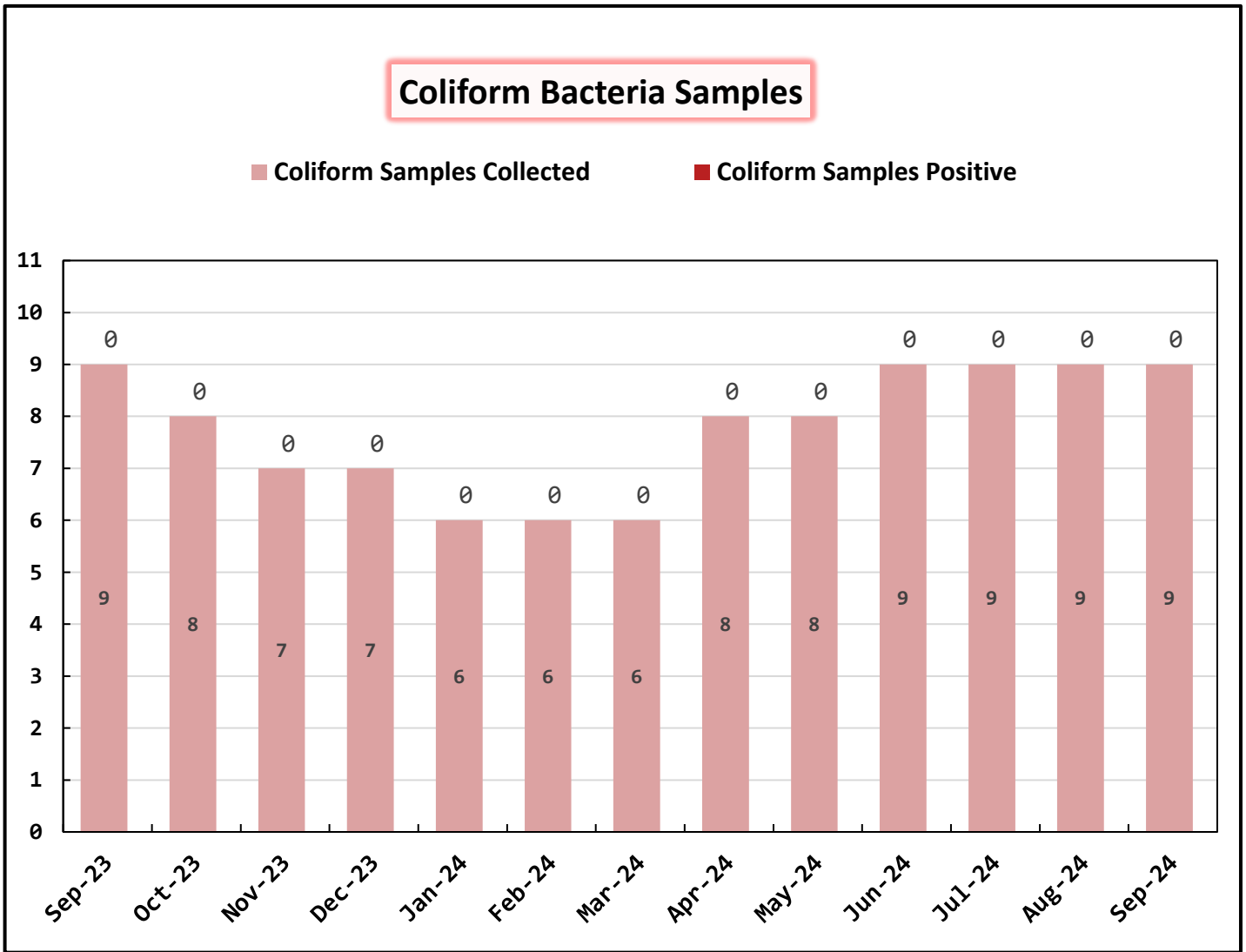


### Backflow, Residential & Commercial Base & Usage, Fireflow, & Fees

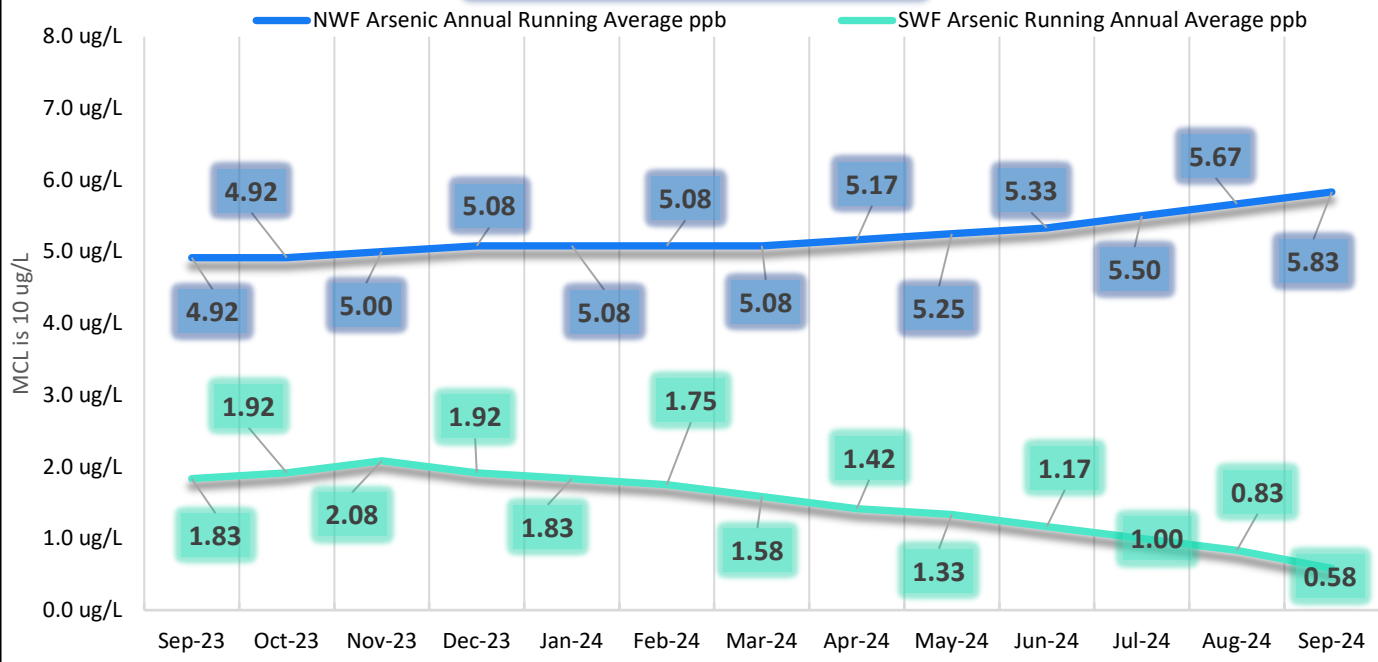


Data Period	August 1 - 31, 2024	Operations Data
	Past Due Accounts	245 <i>ea</i>
	Properties with Liens	20 <i>ea</i>
	Accounts Locked Off	3 <i>ea</i>
	Water Main Locates	29 <i>ea</i>
	Water Quality Complaints	1 <i>ea</i>
	Customer Service Calls	42 <i>ea</i>
	Customer Valves Installed	0 <i>ea</i>
	New Services Installed	2 <i>ea</i>
	NBWD Office & Grounds Water Use:	<u><u>0.0277</u></u> <i>MG</i>

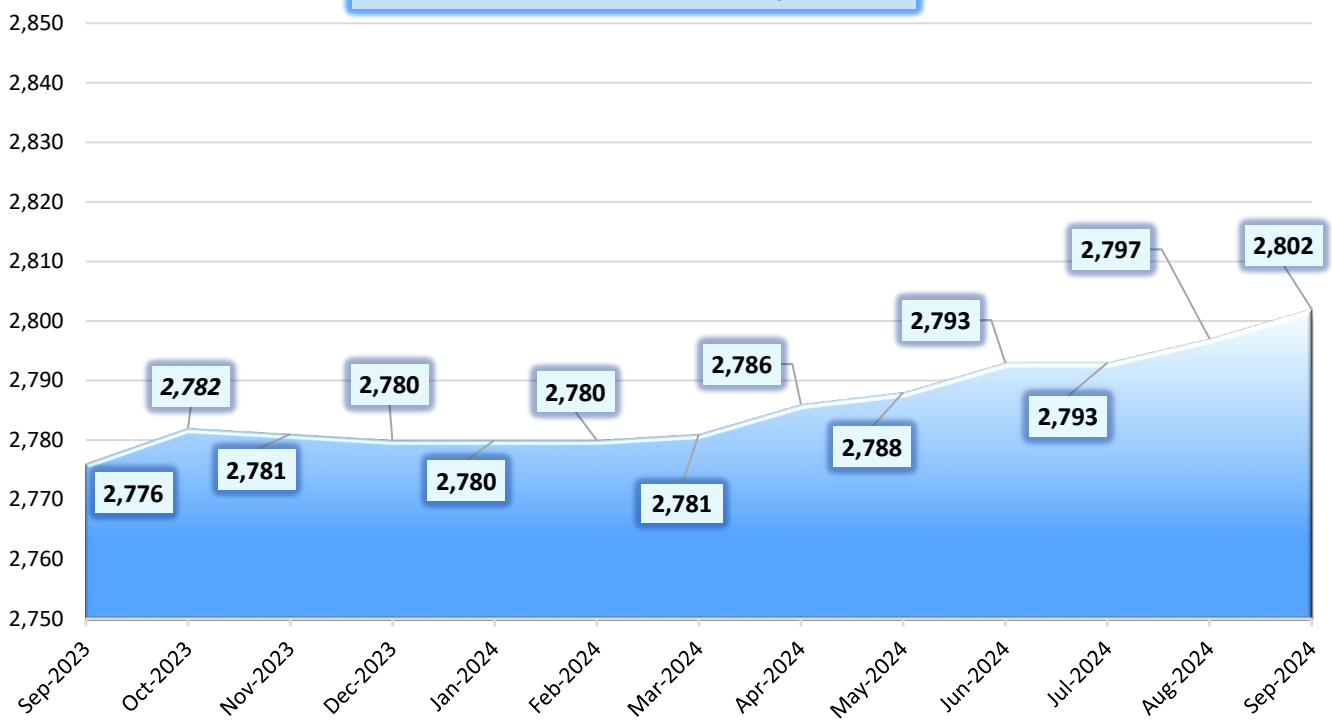
Data Period	August 1 -31, 2024		Water Quality Data	
	Coliform Samples Collected	9	<i>ea</i>	
	Coliform Samples Absent	9	<i>ea</i>	
	Coliform Samples Positive	0	<i>ea</i>	
	Coliform Sample Positive E.coli	0	<i>ea</i>	
	NWF Arsenic	7.00	<i>ug/L</i>	
	SWF Arsenic	0.00	<i>ug/L</i>	
	NWF Arsenic Annual Running Average	5.83	<i>ug/L</i>	
	SWF Arsenic Running Annual Average	0.58	<i>ug/L</i>	



### Arsenic Monthly Annual Average micrograms per liter (ug/L)



### Residential Connections: 3/4" & 1"



## General Managers Report for October 2024

- The Lead line survey has been completed and sent into DOH. We were required to inventory 346 services out of 3,194. The 3,194 comes from our Water Facilities Inventory (WFI) that DOH developed. We only have 2,802 actual connections, meaning that 392 have multi-family homes, motels, inns, treatment facilities that have services that serve other dwellings or meters on private property away from our metered connections. There were 414 work orders out of this, 68 were found that had trees, fences, brush, bamboo, concrete, or asphalt around them. Meaning we'll have to come back and clean up. We can't get to them.
- On our side, all meters were found to be plumbed with Pvc, Pex, & Poly. No copper or galvanized.
- On the customer side, 10 were found to have galvanized pipe feeding the home. The rest were Pvc, Pex, & Poly.
- 68 meters had trees, fences, brush, bamboo, concrete, or asphalt around them. Meaning we'll have to come back.
- The crew has also been busy installing blow offs on the end of lines where I've received dirty water complaints. Most have 1" standpipes that don't clean up the lines because they're restricted. Some locations don't have anything. This task will be an ongoing project.
- Where starting Hydrant Flushing starting October 21<sup>st</sup>. This has been put in the paper and of course we'll have or sign out on Bay Ave.
- The 2nd part of Lead & Copper testing has been taken, 40 samples have been sent in and awaiting the results. Also sent in Volatile Organic Carbon (VOC) Herbicides, Arsenic, & Bac-Ts completed the testing.
- Budget item:
  - Antenna Project. This would involve 2 antenna installations. One here at the North the other would be placed at 220<sup>th</sup> Street and V Lane at the property we own. These would be 100 ft in height. We'd be able to read meters right at the office. We'd also get real time data that would show a leak at a service that happened that day. Instead of waiting to read monthly and find it. Estimated cost \$135,000.00.



## September Work Orders

Read/Leave On	13
Turn Off/Lock – Customer Request	2
Turn Off/Lock – Non-Payment	3
Interrogate Meter	5
Locates	29
Unlock/Turn On	4
Test Backflow	0
Miscellaneous	6
Replace Meter Box	0
Low Pressure	1
Check Customer Valves	0
Dirty Water Complaints	1
Replace Meter	3
Install New Service	2
Assist Customer	0
Check For Leak	3
Re-Read Meter	0
Install Customer Control Valve	0
<b>Total</b>	<b>72</b>